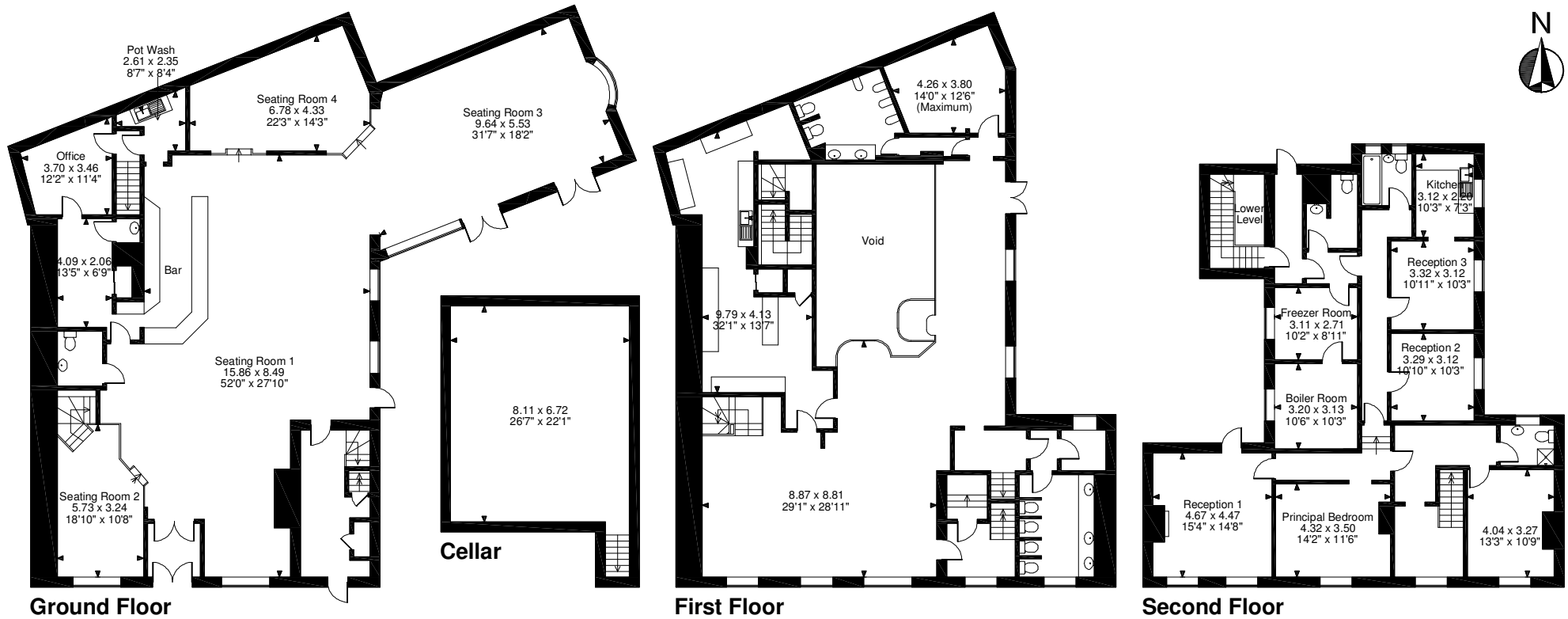


The George Eliot, Nuneaton
 Cellar gross internal area = 607 sq ft / 56 sq m
 Ground Floor gross internal area = 2,946 sq ft / 274 sq m
 First Floor gross internal area = 2,206 sq ft / 205 sq m
 Second Floor gross internal area = 1,700 sq ft / 158 sq m
 Total gross internal area = 7,459 sq ft / 693 sq m



FOR ILLUSTRATIVE PURPOSES ONLY - NOT TO SCALE

The position & size of doors, windows, appliances and other features are approximate only.

© ehouse. Unauthorised reproduction prohibited. Drawing ref. dig/8494244/SS