

Do not scale off this drawing. All dimensions to be checked on site prior to manufacture and construction. This drawing is the property of Harrison Ince Partnership and should not be reproduced without permission. All discrepancies to be brought to the attention of the architect immediately and in conjunction with the specification / Bill of quantities and related drawings.

REVISIONS			
-	FIRST ISSUE	00:00:00	
A	CCTV ADDED	00:00:00	
B	PLAN AMENDED	31.03.11	SY
C	DOORS UPDATED	13.11.05	SY
D	WCS UPDATED	17.05.11	SY
E	LAYOUT AMENDED	26.05.11	SY
F	AS BUILT	15.07.11	KMJ

**FIRE AUTHORITY REQUIREMENTS**

- F30 HALF HOUR FIRE RESISTANT WITH SMOKE SEAL & INTUMESCENT STRIPS
- F60 ONE HOUR FIRE RESISTANT WITH SMOKE SEALS & INTUMESCENT STRIPS
- VP VISION PANEL
- P8 PANIC BOLT
- SC SELF-CLOSING
- SCA SELF-CLOSING AUTOMATIC RELEASE
- FL FUSIBLE LINK
- DS DOOR SELECTOR
- ILLUMINATED SUSPENDED 'FIRE EXIT' SIGN 75mm LETTERS
- S13 'FIRE DOOR KEEP SHUT' 10mm LETTERS TO BOTH SIDES OF DOOR LEAF
- S14 'FIRE DOOR KEEP LOCKED' 10mm LETTERS TO BOTH SIDES OF DOOR LEAF
- S20 'FIRE ESCAPE KEEP CLEAR' 10mm LETTERS TO BOTH SIDES OF DOOR LEAF
- S22 'FIRE EXIT' 20mm LETTERS
- S25 'PUSH BAR TO OPEN' 20mm LETTERS
- S26 DIRECTIONAL ARROW (GREEN)
- FNG FIRE RESISTING GLAZING ELEMENT
- AREA COVERED BY ESCAPE LIGHTING TO BS 5269 PART 1
- AREA COVERED BY SMOKE DETECTORS
- AREA COVERED BY HEAT DETECTORS
- FT FIRE ALARM CALL POINT
- FAP FIRE ALARM INDICATOR PANEL
- FB FIRE BLANKET IN CONTAINER
- CD CARBON DIOXIDE FIRE EXTINGUISHER
- 9LITRE WATER EXTINGUISHER
- DRY POWDER EXTINGUISHER
- FOAM FIRE EXTINGUISHER
- ALARM WARNING DEVICE

ALL WALLS AND PARTITIONS TO BE MINIMUM HALF HOUR FIRE RESISTANT

EMERGENCY LIGHTING TO COMPLY WITH BS 5266 PART 1

FIRE SAFETY RELATED SIGNS AND NOTICES TO COMPLY TO BS 5499

FIRE FIGHTING EQUIPMENT TO COMPLY WITH BS 5306 WALL AND CEILING LININGS ARE TO BE CLASS 1 SURFACE SPREAD OF FLAME (AS DEFINED BY BS 476

CLASS 0 IN ESCAPE ROUTES

UNHOLDSTERED SEATING FURNITURE TO SATISFY THE FOLLOWING

\* IGNITION SOURCE (CIGARETTE TEST) AS SPECIFIED IN BS 5852 PART 1

FIRE TEST FOR FURNITURE METHODS OF TEST FOR THE

IGNITION SOURCE, MINIMUM TEST TO BE CQB1 IGNITION SOURCE 5

FABRICS THAT HAVE HAD A FLAME RETARDANT TREATMENT TO PASS BY BS 5651 TEST CERTIFICATE TO BE SUBMITTED TO FIRE AUTHORITY

CURTAINS AND PAPERES TO SATISFY TYPE B PERFORMANCE REQUIREMENTS TO BS 5667 PART 2

ARTIFICIAL FOLIAGE AND DECORATIVE EFFECTS TO BE FIRE RETARDANT TO THE SATISFACTION OF THE FIRE AUTHORITY

TOILETS

ALL WALLS & TILED FULL HEIGHT

TOILETS ARE TO BE DESIGNED TO BS 6465 PART 1 1984 CODE OF PRACTICE FOR THE SCALE AND PROVISION, SELECTION AND INSTALLATION OF SANITARY APPLIANCES IN KITCHEN

ALL WALLS TO BE TILED FULL HEIGHT

AREA FOR REGULATED ENTERTAINMENT/ SALE BY RETAIL OF ALCOHOL/ PROVISION OF LATE NIGHT ENTERTAINMENT

AREA FOR REGULATED ENTERTAINMENT/ SALE BY RETAIL OF ALCOHOL/ PROVISION OF LATE NIGHT ENTERTAINMENT

AREA FOR REGULATED ENTERTAINMENT/ SALE BY RETAIL OF ALCOHOL/ PROVISION OF LATE NIGHT ENTERTAINMENT

AREA FOR REGULATED ENTERTAINMENT/ SALE BY RETAIL OF ALCOHOL/ PROVISION OF LATE NIGHT ENTERTAINMENT

AREA FOR REGULATED ENTERTAINMENT/ SALE BY RETAIL OF ALCOHOL/ PROVISION OF LATE NIGHT ENTERTAINMENT

AREA FOR REGULATED ENTERTAINMENT/ SALE BY RETAIL OF ALCOHOL/ PROVISION OF LATE NIGHT ENTERTAINMENT

AREA FOR REGULATED ENTERTAINMENT/ SALE BY RETAIL OF ALCOHOL/ PROVISION OF LATE NIGHT ENTERTAINMENT

AREA FOR REGULATED ENTERTAINMENT/ SALE BY RETAIL OF ALCOHOL/ PROVISION OF LATE NIGHT ENTERTAINMENT

AREA FOR REGULATED ENTERTAINMENT/ SALE BY RETAIL OF ALCOHOL/ PROVISION OF LATE NIGHT ENTERTAINMENT

AREA FOR REGULATED ENTERTAINMENT/ SALE BY RETAIL OF ALCOHOL/ PROVISION OF LATE NIGHT ENTERTAINMENT

AREA FOR REGULATED ENTERTAINMENT/ SALE BY RETAIL OF ALCOHOL/ PROVISION OF LATE NIGHT ENTERTAINMENT

AREA FOR REGULATED ENTERTAINMENT/ SALE BY RETAIL OF ALCOHOL/ PROVISION OF LATE NIGHT ENTERTAINMENT

AREA FOR REGULATED ENTERTAINMENT/ SALE BY RETAIL OF ALCOHOL/ PROVISION OF LATE NIGHT ENTERTAINMENT

AREA FOR REGULATED ENTERTAINMENT/ SALE BY RETAIL OF ALCOHOL/ PROVISION OF LATE NIGHT ENTERTAINMENT

AREA FOR REGULATED ENTERTAINMENT/ SALE BY RETAIL OF ALCOHOL/ PROVISION OF LATE NIGHT ENTERTAINMENT

AREA FOR REGULATED ENTERTAINMENT/ SALE BY RETAIL OF ALCOHOL/ PROVISION OF LATE NIGHT ENTERTAINMENT

AREA FOR REGULATED ENTERTAINMENT/ SALE BY RETAIL OF ALCOHOL/ PROVISION OF LATE NIGHT ENTERTAINMENT

AREA FOR REGULATED ENTERTAINMENT/ SALE BY RETAIL OF ALCOHOL/ PROVISION OF LATE NIGHT ENTERTAINMENT

AREA FOR REGULATED ENTERTAINMENT/ SALE BY RETAIL OF ALCOHOL/ PROVISION OF LATE NIGHT ENTERTAINMENT

AREA FOR REGULATED ENTERTAINMENT/ SALE BY RETAIL OF ALCOHOL/ PROVISION OF LATE NIGHT ENTERTAINMENT

AREA FOR REGULATED ENTERTAINMENT/ SALE BY RETAIL OF ALCOHOL/ PROVISION OF LATE NIGHT ENTERTAINMENT

AREA FOR REGULATED ENTERTAINMENT/ SALE BY RETAIL OF ALCOHOL/ PROVISION OF LATE NIGHT ENTERTAINMENT

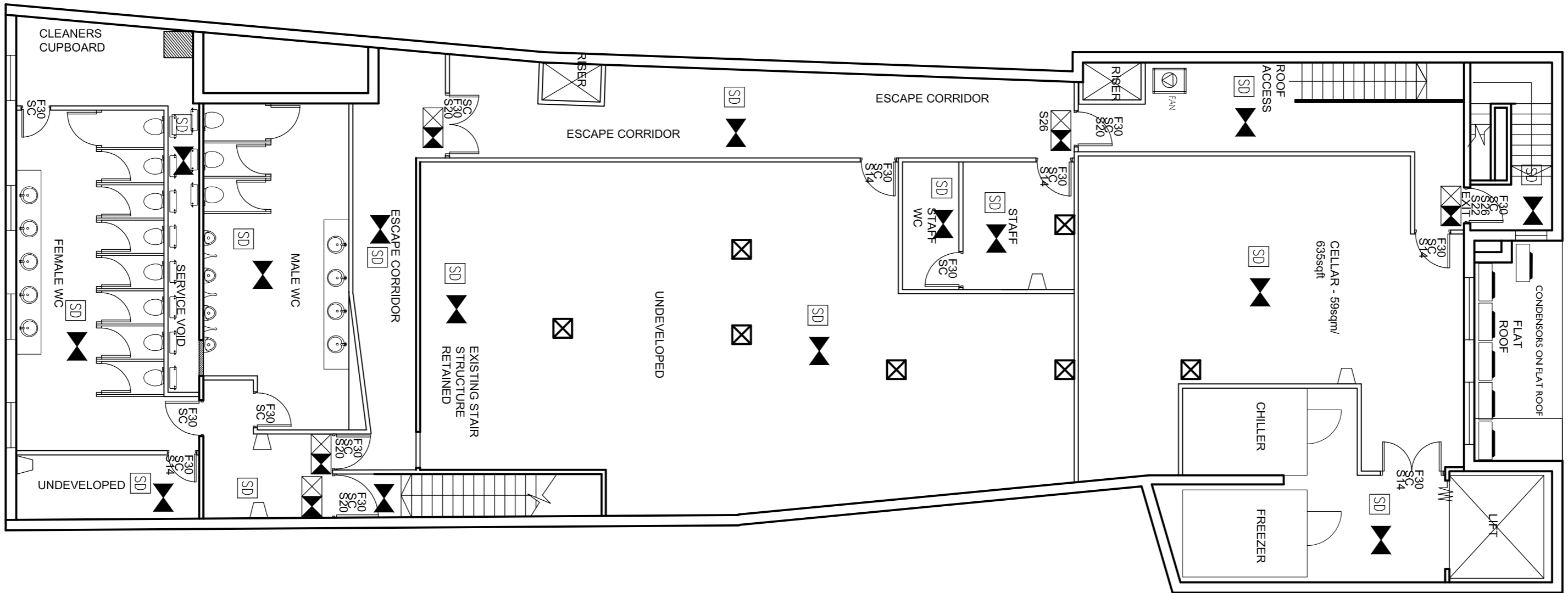
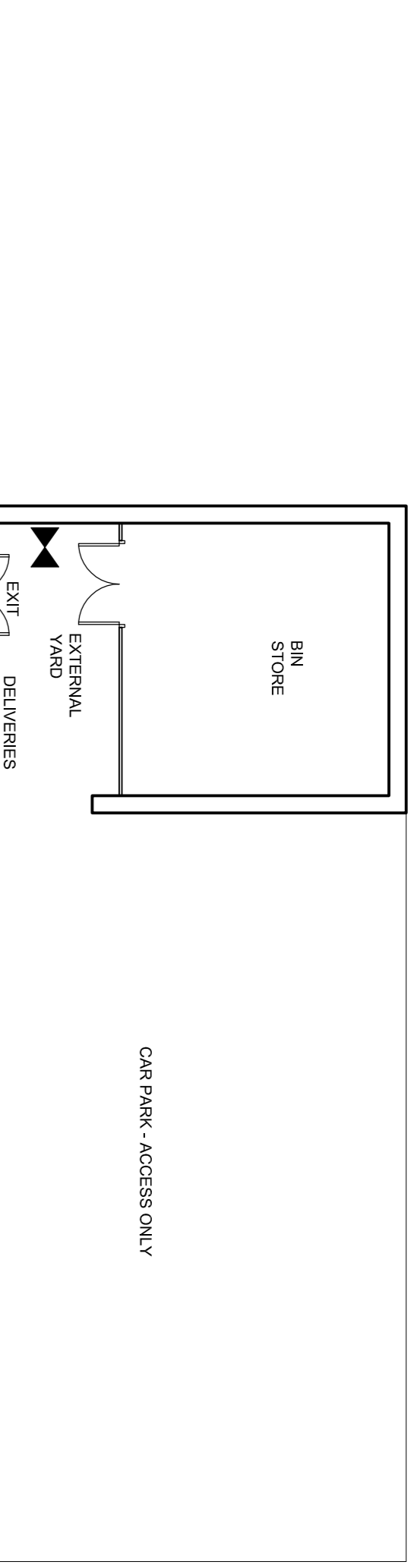
AREA FOR REGULATED ENTERTAINMENT/ SALE BY RETAIL OF ALCOHOL/ PROVISION OF LATE NIGHT ENTERTAINMENT

AREA FOR REGULATED ENTERTAINMENT/ SALE BY RETAIL OF ALCOHOL/ PROVISION OF LATE NIGHT ENTERTAINMENT

AREA FOR REGULATED ENTERTAINMENT/ SALE BY RETAIL OF ALCOHOL/ PROVISION OF LATE NIGHT ENTERTAINMENT

AREA FOR REGULATED ENTERTAINMENT/ SALE BY RETAIL OF ALCOHOL/ PROVISION OF LATE NIGHT ENTERTAINMENT

AREA FOR REGULATED ENTERTAINMENT/ SALE BY RETAIL OF ALCOHOL/ PROVISION OF LATE NIGHT ENTERTAINMENT



**SCHEDULE OF ACCOMMODATION:**  
 CUSTOMER AREA: 235 sqm/ 2529 sqft  
 KITCHEN: 34 sqm/ 365 sqft  
 CELLAR: 59 sqm/ 635 sqft  
 PAVEMENT CAFE: 18 sqm/ 194 sqft

**HARRISON INCE**  
 ARCHITECTS INTERIOR DESIGNERS

**JD WETHERSPOON**

9-11 HIGH STREET, HOLYWELL  
 CH8 7LA

LICENSING PLAN

date: APRIL 2010 scale: 1:100@ A1

job no. JD 302 drawing no. AM01 F  
 CAD/AI checked

GROUND FLOOR PLAN

FIRST FLOOR PLAN