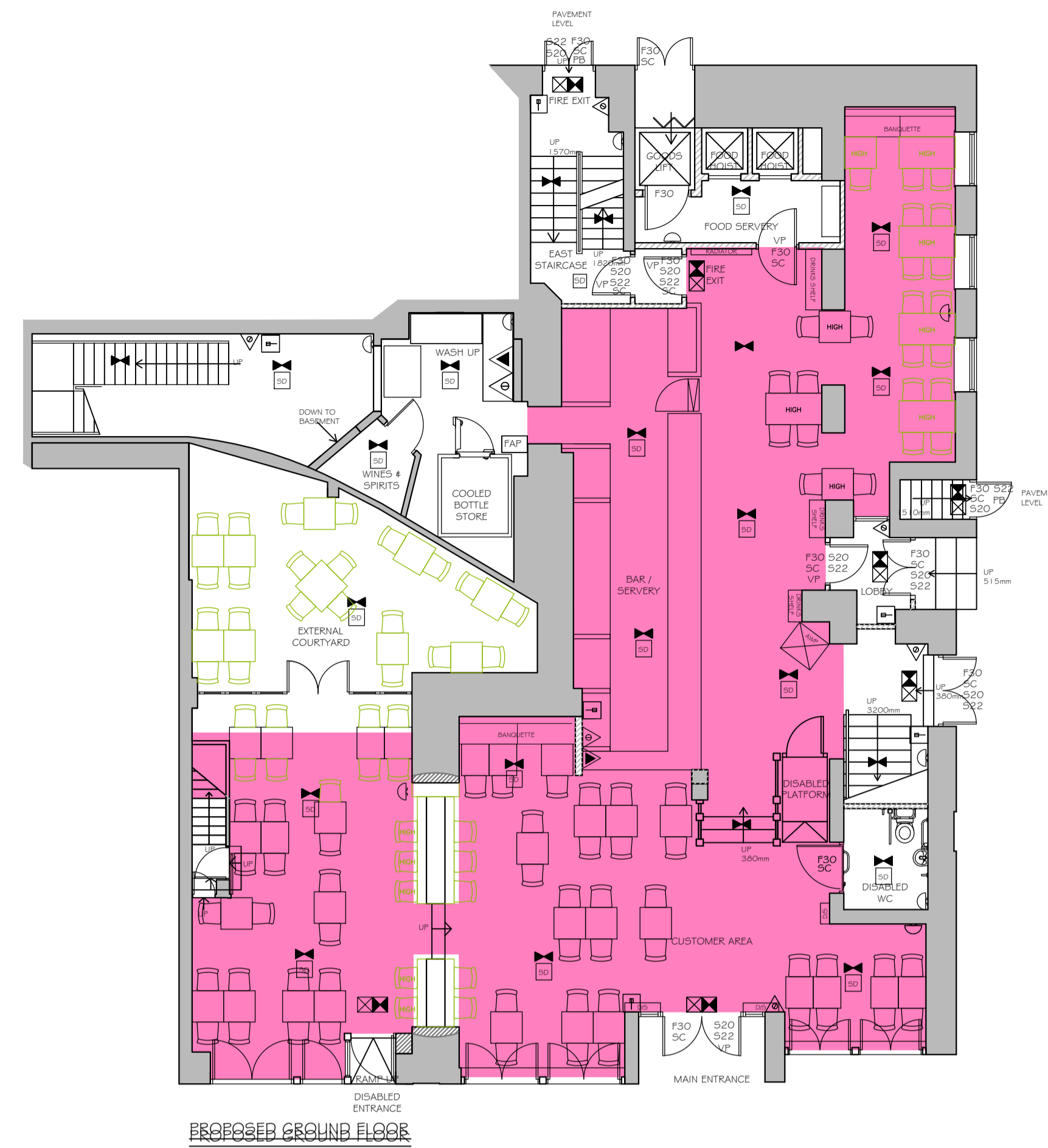
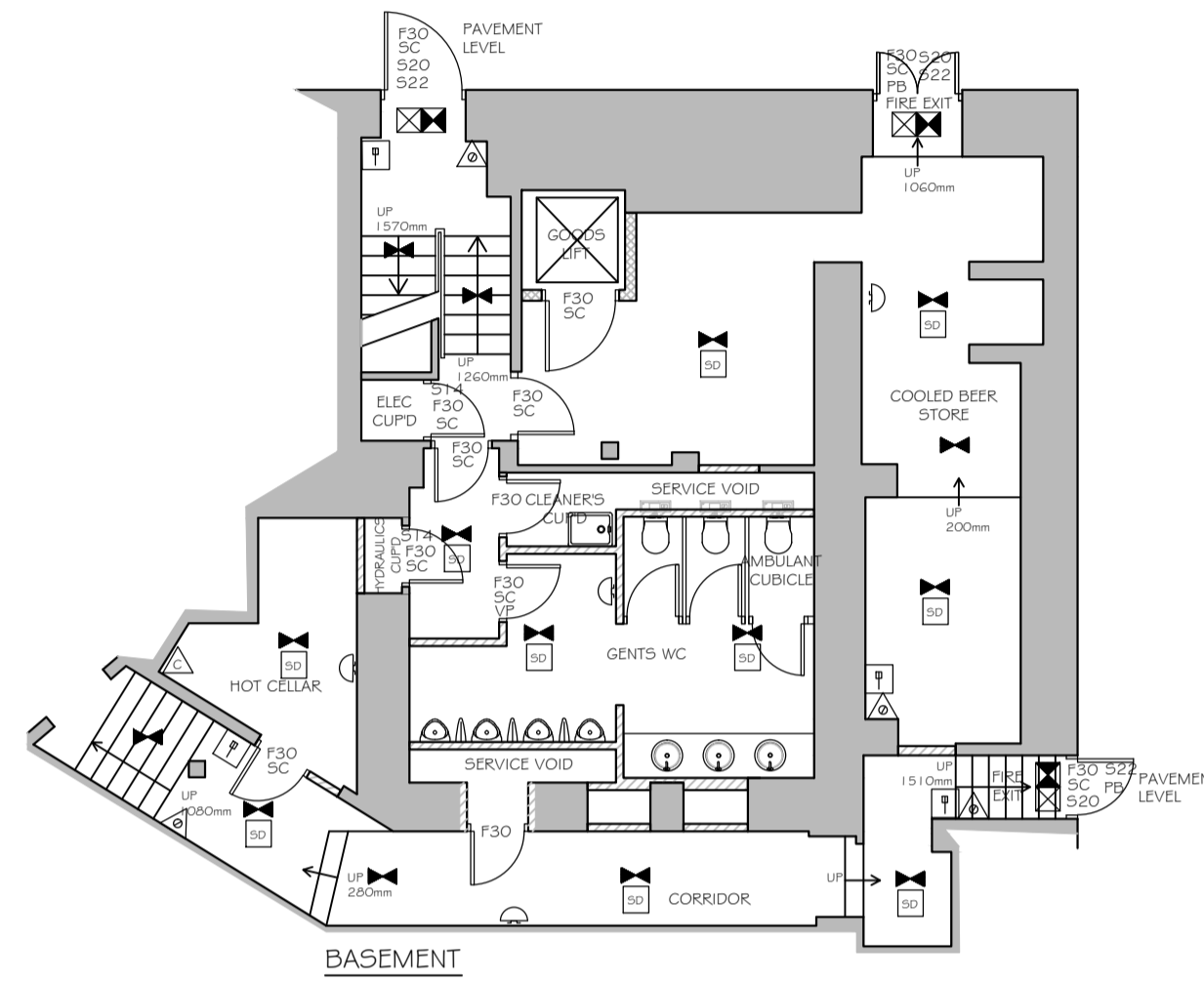
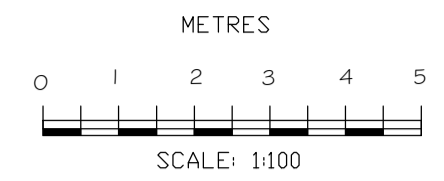


- F20 TWENTY MINS FIRE RESISTANT WITH SMOKE SEALS AND INTUMESCENT STRIP
- F30 HALF HOUR FIRE RESISTANT WITH SMOKE SEALS AND INTUMESCENT STRIP
- F60 ONE HOUR FIRE RESISTANT WITH SMOKE SEALS AND INTUMESCENT STRIP
- VP VISION PANEL
- PP PANIC PAD
- PB PANIC BAR
- SC SELF CLOSING
- SCA SELF CLOSING AUTOMATIC RELEASE
- FL FUSIBLE LINK
- DS DOOR SELECTOR
- ILLUMINATED EMERGENCY FITTING WITH RUNNING PERSON SYMBOL & ARROW
- NON MAINTAINED EMERGENCY FLOODLIGHTING C/W BATTERY PACK
- S13 'FIRE DOOR KEEP SHUT' 10mm LETTERS TO BOTH SIDES OF DOOR LEAF
- S14 'FIRE DOOR KEEP LOCKED' 10mm LETTERS TO BOTH SIDES OF DOOR LEAF
- S20 'FIRE ESCAPE KEEP CLEAR' 10mm LETTERS TO BOTH SIDES OF DOOR LEAF
- S22 RUNNING PERSON SYMBOL+ARROW
- S25 'PUSH BAR TO OPEN' 20mm LETTERS
- S26 DIRECTIONAL ARROW (GREEN)
- FRG FIRE RESISTING GLAZING ELEMENT
- AREA COVERED BY ESCAPE LIGHTING TO BS.5266, PART 1
- SD AREA COVERED BY SMOKE DETECTOR
- HD AREA COVERED BY HEAT DETECTOR
- FIRE ALARM CALL POINT
- FAP FIRE ALARM CONTROL PANEL
- FIRE ALARM BELL /SOUNDER
- C CARBON DIOXIDE FIRE EXTINGUISHER
- 9 LITRE WATER FIRE EXTINGUISHER
- DRY POWDER FIRE EXTINGUISHER
- FOAM FIRE EXTINGUISHER
- FIRE BLANKET

NOTE - Responsibility is not accepted for errors made by others in scaling from this drawing. All construction information should be taken from figured dimensions only



ALL WALLS AND PARTITIONS TO BE MINIMUM HALF HOUR FIRE RESISTANCE.

EMERGENCY LIGHTING TO COMPLY WITH 2005 EDITION OF BS 5266 PART 1.

FIRE SAFETY RELATED SIGNS AND NOTICES TO COMPLY WITH THE HEALTH AND SAFETY (SAFETY SIGN AND SIGNAL) REGULATIONS 2005

FIRE ALARM AND DETECTION SYSTEM TO BE INSTALLED TO BS 5839 PART 1 2002

FIRE FIGHTING EQUIPMENT TO COMPLY WITH BS 5306 WALL AND CEILING LININGS ARE TO BE CLASS 1 SURFACE SPREAD OF FLAME (AS DEFINED BY BS 476 PART 7) IN PUBLIC AREAS AND CLASS 0 IN ESCAPE ROUTES.

UPHOLSTERED SEAT FURNITURE TO SATISFY THE FOLLOWING

\* IGNITION SOURCE (CIGARETTE TEST) AS SPECIFIED IN BS 5852 PART 1 FIRE TEST FOR FURNITURE METHODS OF TEST FOR THE IGNABILITY BY SMOKERS.

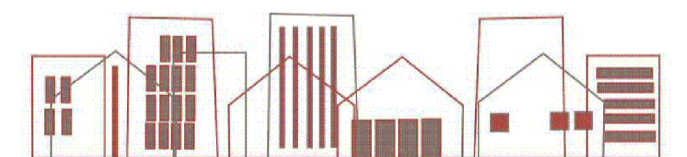
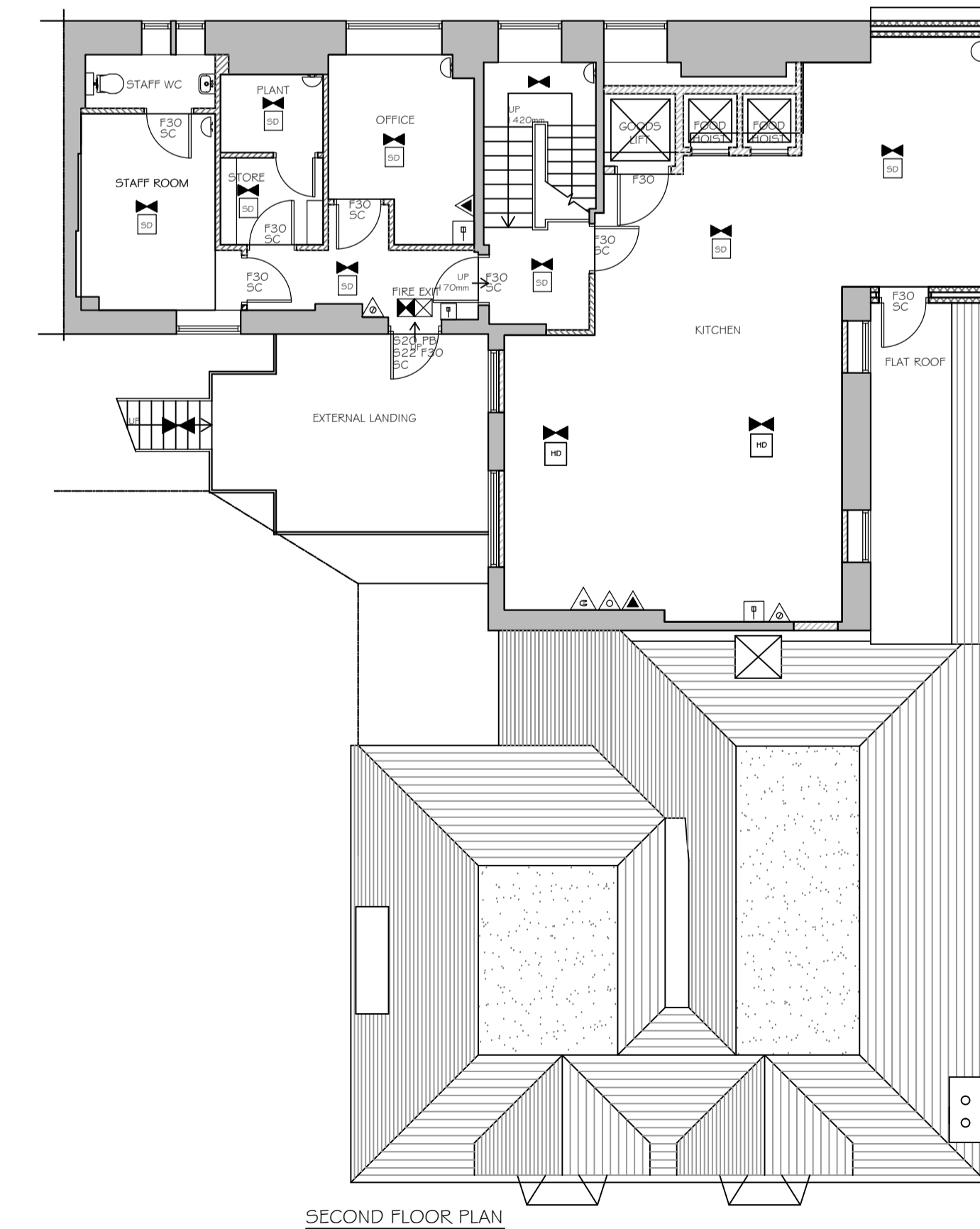
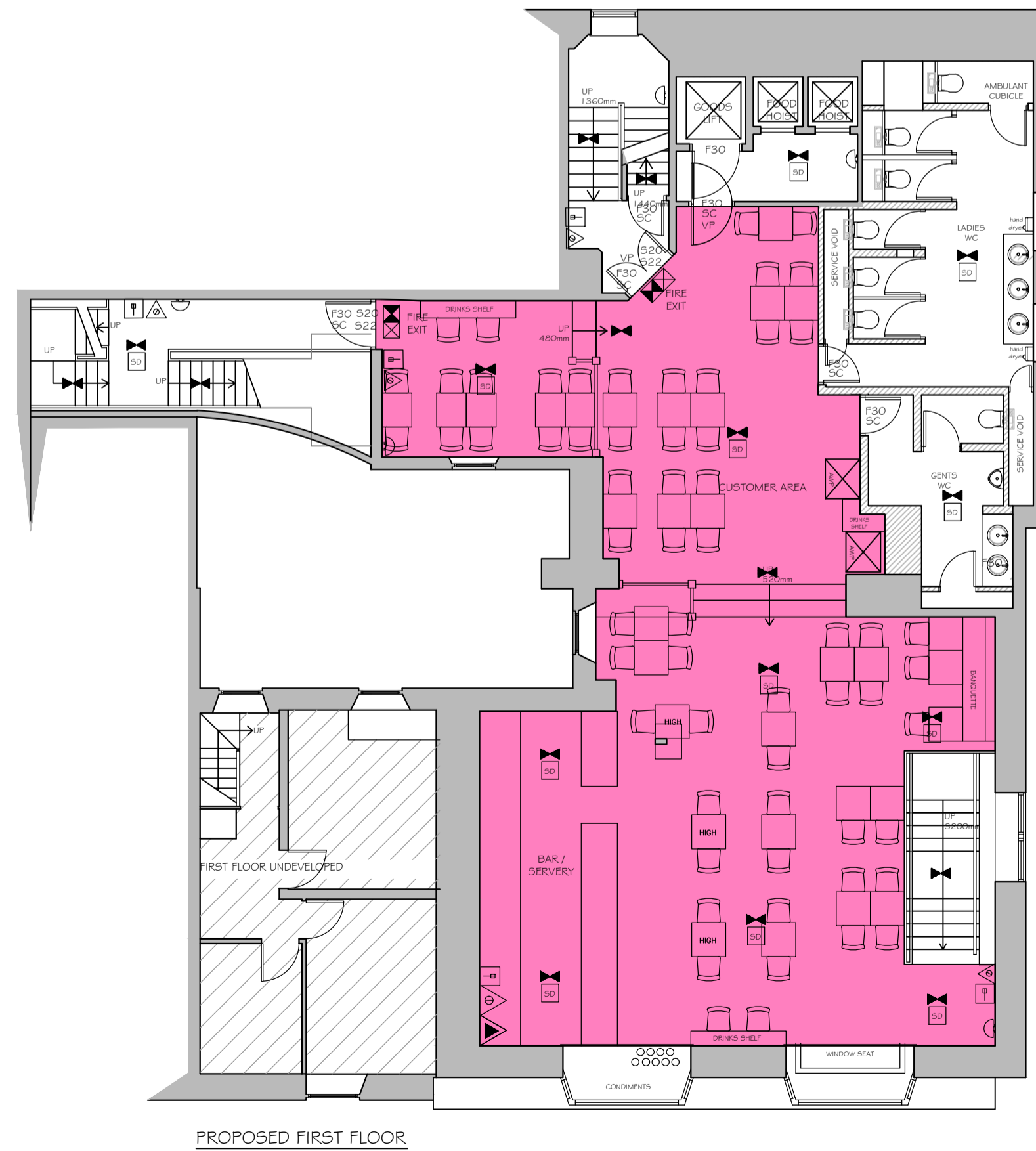
\* BS 5852 PART 2 FIRE TEST FOR FURNITURE-METHODS OF TEST FOR THE IGNABILITY OF UPHOLSTERED COMPOSITES FOR TESTING BY FLAMING SOURCE, MINIMUM TEST TO BE CRIB IGNITION SOURCE 5.

FABRICS THAT HAVE HAD A FLAME RETARDANT TREATMENT TO PASS THE WATER SOAK TEST AS DEFINED BY BS 5651 TEST CERTIFICATE TO BE SUBMITTED TO FIRE AUTHORITY.

CURTAINS AND DRAPES TO SATISFY TYPE B PERFORMANCE REQUIREMENTS TO BS 5867 PART 2.

ARTIFICIAL FOLIAGE AND DECORATIVE EFFECTS TO BE FIRE RETARDANT TO THE SATISFACTION OF THE FIRE AUTHORITY.

AREA FOR REGULATED ENTERTAINMENT/ SALE BY RETAIL OF ALCOHOL/ PROVISION OF LATE NIGHT REFRESHMENT



**K d paine & associates ltd**

architectural & construction consultants  
project managers interior designers

Adur Business Centre Little High Street,  
Shoreham by Sea, West Sussex, BN43 5EG.  
t: +44 (0)1273 467518 f: +44 (0)1273 467520  
e-mail: info@kdpaine.co.uk

CLIENT JD WETHERSPOON PLC

PROJECT PUB NO: 5958  
THE HAIN LINE  
ST IVES

DRAWING PROPOSED LICENSING LAYOUTS

SCALE	DATE	DRAWN
A1/1:100	FEB 2013	AKS
PROJECT No	DRAWING No	REVISION
6877	L-20	