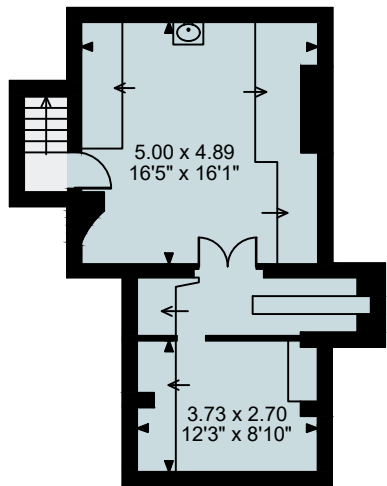
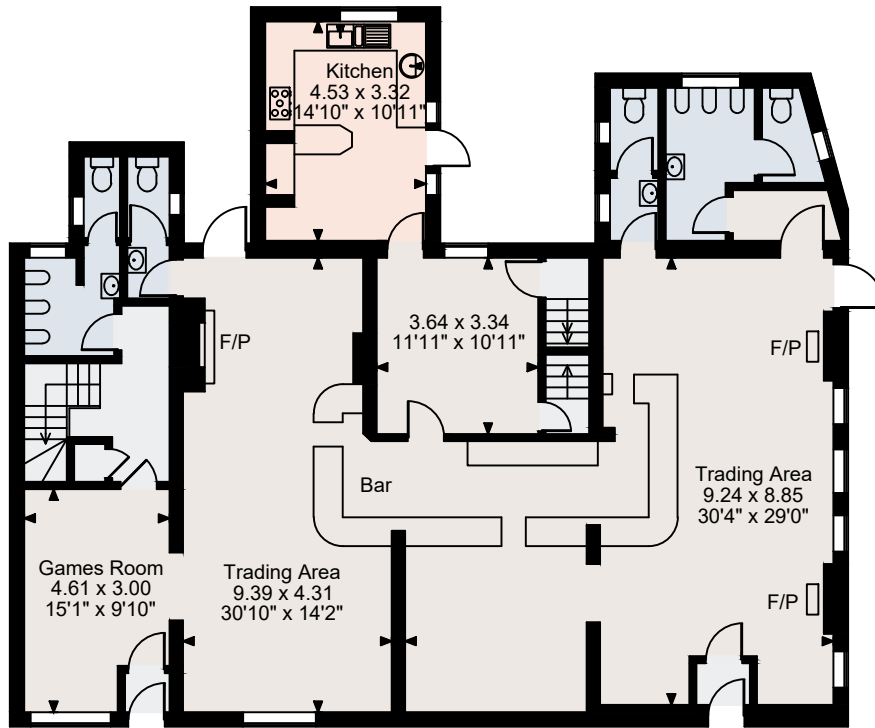


Theobald Arms, Grays

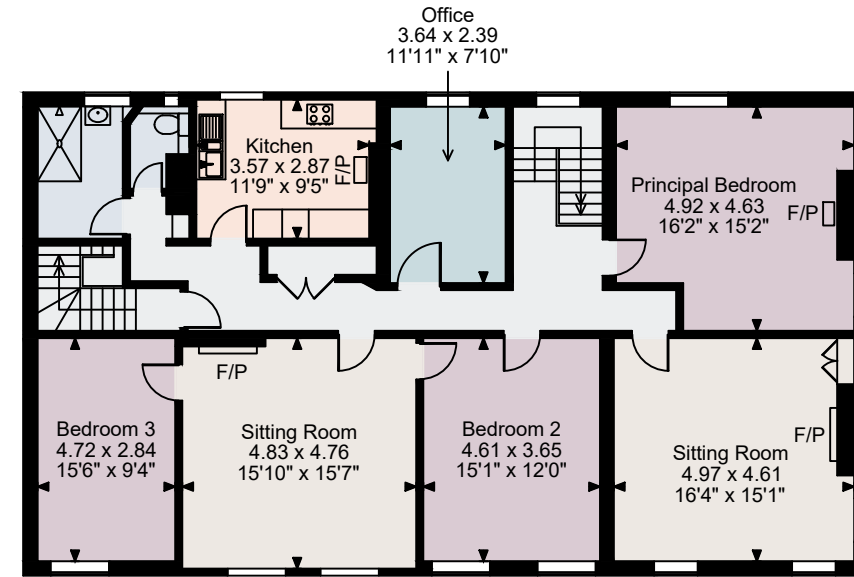
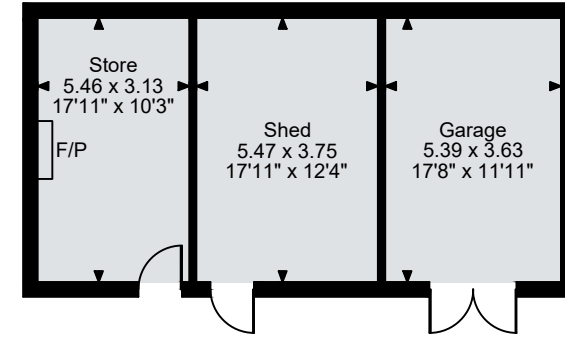
Cellar gross internal area = 4,69 sq ft / 44 sq m
 Ground Floor gross internal area = 2061 sq ft / 192 sq m
 First Floor gross internal area = 1691 sq ft / 157 sq m
 Garage gross internal area = 635 sq ft / 59 sq m
 Total gross internal area = 4,856 sq ft / 451 sq m



Cellar



Ground Floor



First Floor

FOR ILLUSTRATIVE PURPOSES ONLY - NOT TO SCALE

The position & size of doors, windows, appliances and other features are approximate only.

© ehouse. Unauthorised reproduction prohibited. Drawing ref. dig/8551698/SS