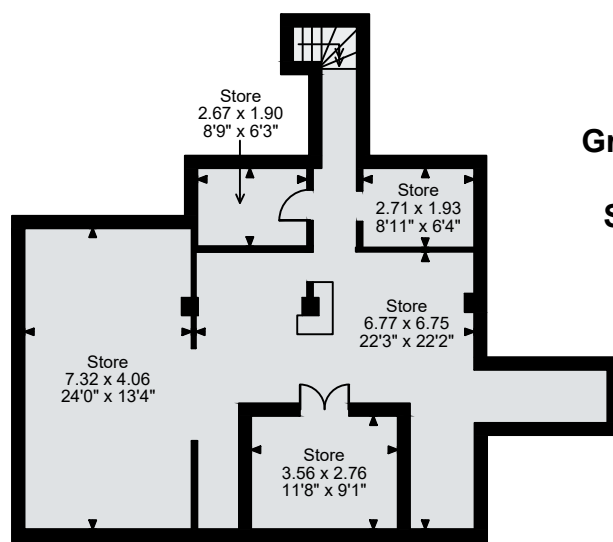
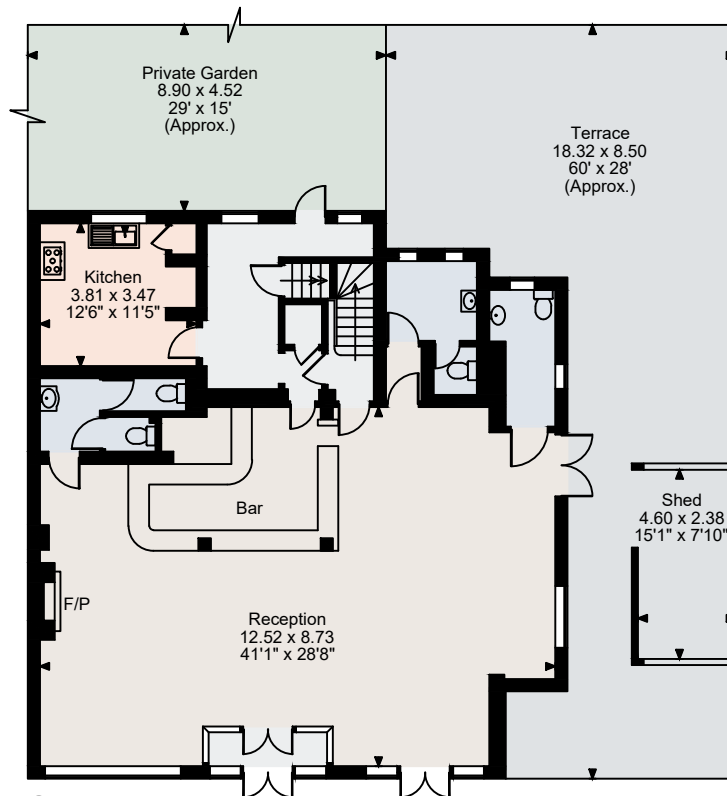


Draughts Eltham, Eltham High Street

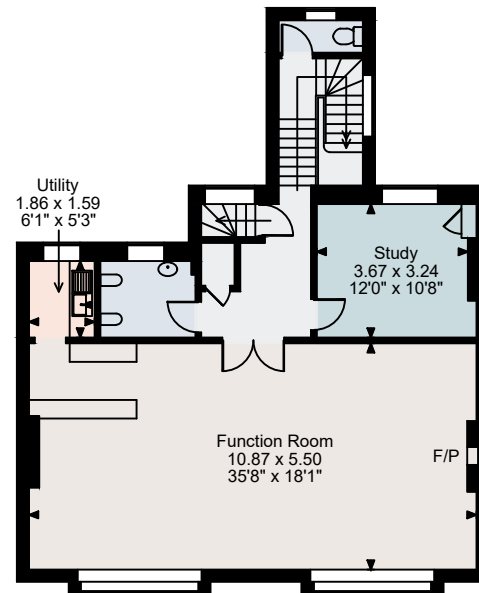
Cellar gross internal area = 1,046 sq ft / 97 sq m
 Ground Floor gross internal area = 1,684 sq ft / 156 sq m
 First Floor gross internal area = 1,041 sq ft / 97 sq m
 Second Floor gross internal area = 970 sq ft / 90 sq m
 Total gross internal area = 4,741 sq ft / 440 sq m



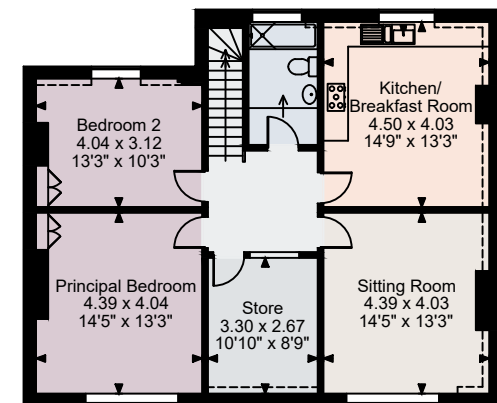
Cellar



Ground Floor



First Floor



Second Floor

FOR ILLUSTRATIVE PURPOSES ONLY - NOT TO SCALE

The position & size of doors, windows, appliances and other features are approximate only.

□□□□ Denotes restricted head height

© ehouse. Unauthorised reproduction prohibited. Drawing ref. dig/8551679/TOW