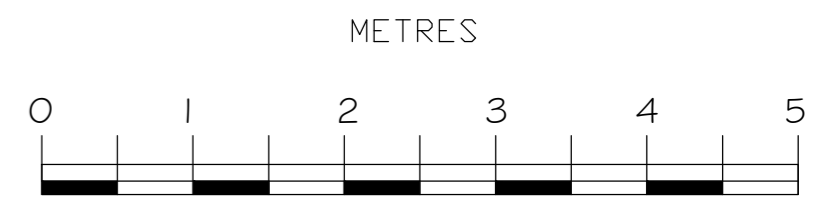
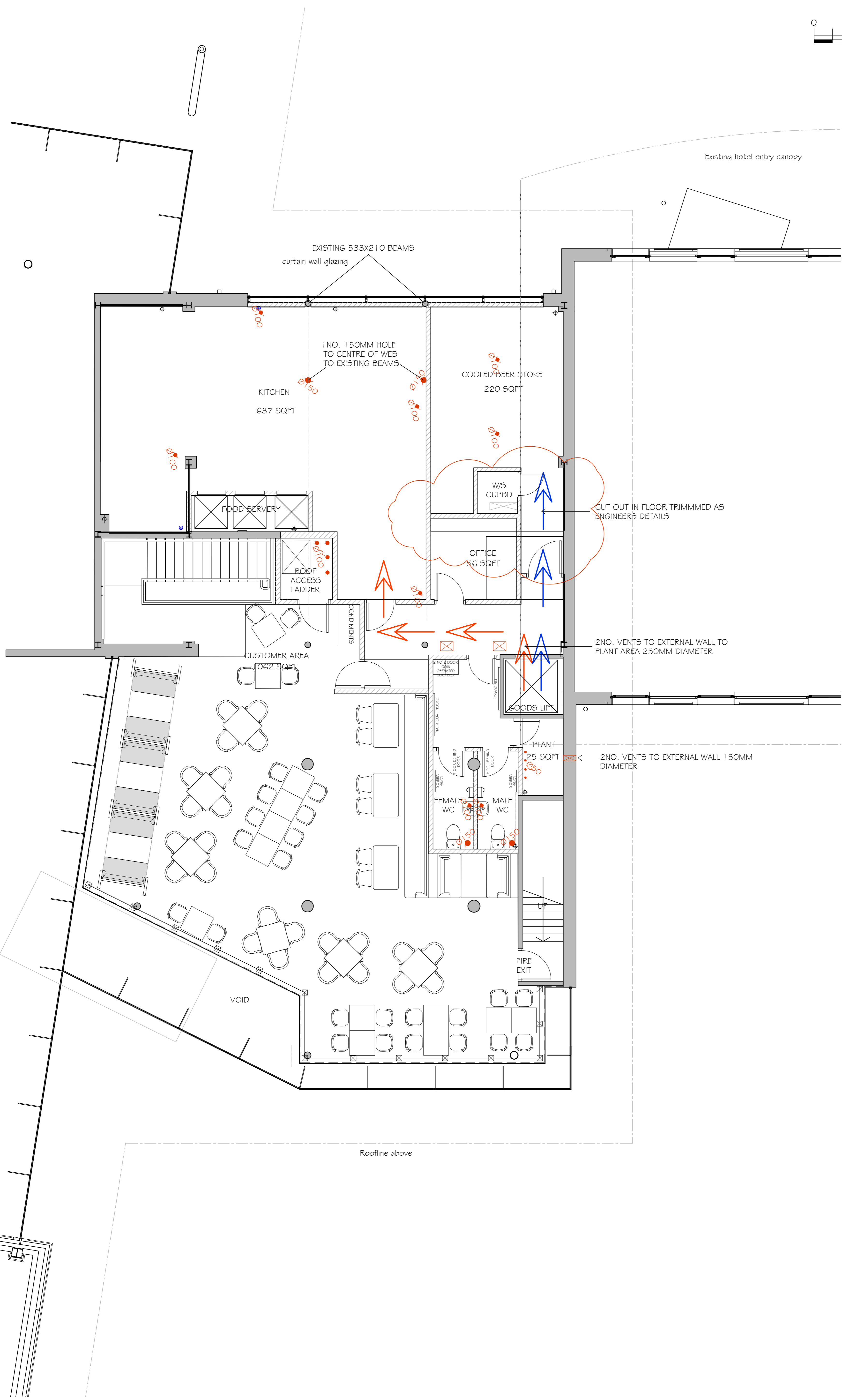


NOTE - Responsibility is not accepted for errors made by others in scaling from this drawing. All construction information should be taken from figured dimensions only

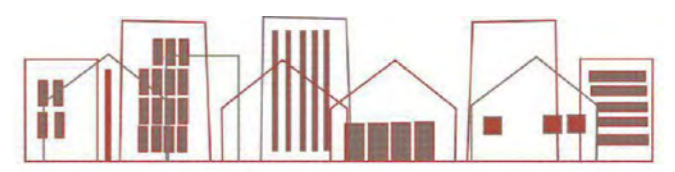


REVISIONS

- REV A: RE-PLAN TO SUIT NEW PROPOSED DEVELOPMENT CONCEPT AKS 15.01.13
- REV B: REAR EXTERNAL AREA EXTENDED AKS 28.01.13
- REV C: FRONT EXTERNAL AREA EXTENDED, FIRST FLOOR RE-PLANNED, GROUND FLOOR ESCAPE STAIR & WASH UP AREA RE-PLANNED. PLANT ADDED. GB 04.03.13
- REV D: GENERAL LAYOUT AMENDS THROUGHOUT TO INCORPORATE FINAL DEVELOPER PLANS/AMENDS AKS 12.08.13
- REV E: GENERAL LAYOUT AMENDS TO KITCHEN ENTRANCE LOBBY AND BOH GE 22.08.13
- REV F: GENERAL LAYOUT AMENDS TO KITCHEN ACCESS AND SHOP FRONT. GE 11.09.13
- REV G: GENERAL LAYOUT AMENDS TO FOOD HOISTS, OFFICE, COOLED BEER STORE GE 04.10.13
- REV H: GENERAL LAYOUT AMENDS TO FOOD HOISTS, AND FIXED FURNITURE. GE 08.10.13
- REV I: STAFF ROOM & PLANT AREA AMENDED AKS 21.10.13
- REV J: BUILDERS WORKS HOLES SHOWN. LM 08.11.13
- REV K: REFER TO CLOUD. LM 27.11.13



AS BUILT



K d paine & associates ltd

architectural & construction consultants
project managers interior designers

Adur Business Centre Little High Street,
Shoreham by Sea, West Sussex, BN43 5EG.
t: +44 (0)1273 467518 f: +44 (0)1273 467520
e-mail: info@kdpaine.co.uk

CLIENT	JD WETHERSFOON PLC		
PROJECT	PUB NO: 7097 THE HOPE AND CHAMPION BEACONSFIELD		
DRAWING	AS BUILT FIRST FLOOR GENERAL ARRANGEMENT		
SCALE	DATE	DRAWN	
A1/1:50	JAN 2014	AKS	
PROJECT No	DRAWING No	REVISION	
6823	05	K	