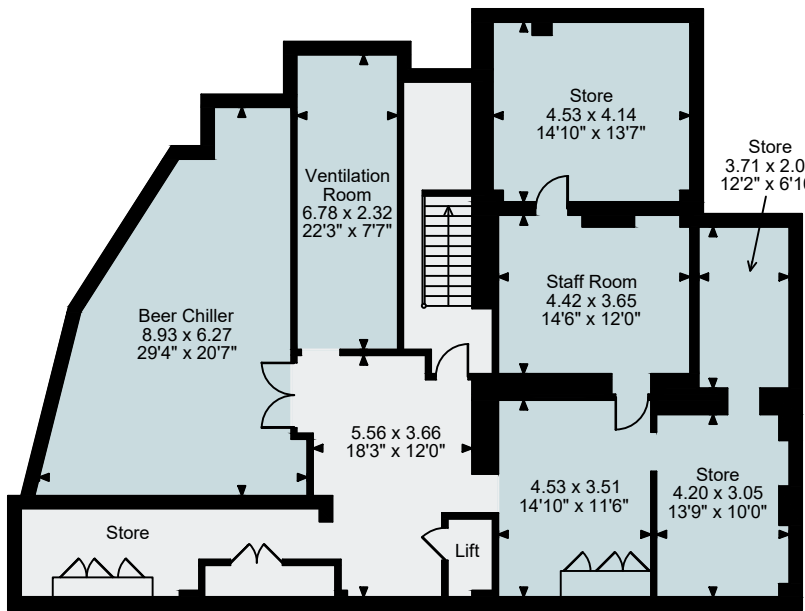
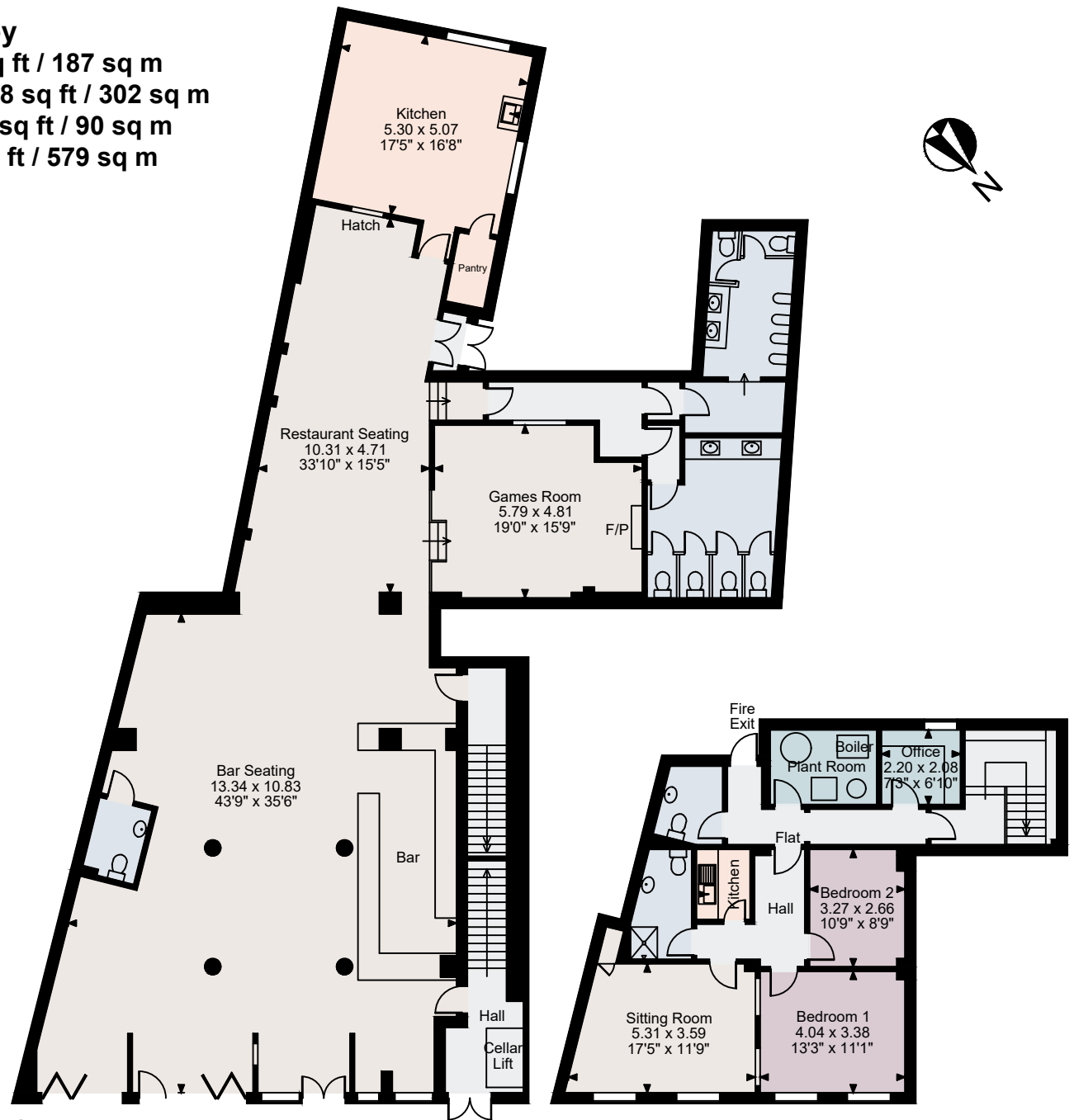


Barrel & Horn, Bromley

Cellar gross internal area = 2,016 sq ft / 187 sq m
 Ground Floor gross internal area = 3,248 sq ft / 302 sq m
 First Floor gross internal area = 971 sq ft / 90 sq m
 Total gross internal area = 6,235 sq ft / 579 sq m



Cellar



Ground Floor

First Floor

FOR ILLUSTRATIVE PURPOSES ONLY - NOT TO SCALE

The position & size of doors, windows, appliances and other features are approximate only.

© ehouse. Unauthorised reproduction prohibited. Drawing ref. dig/8680423/SAP