

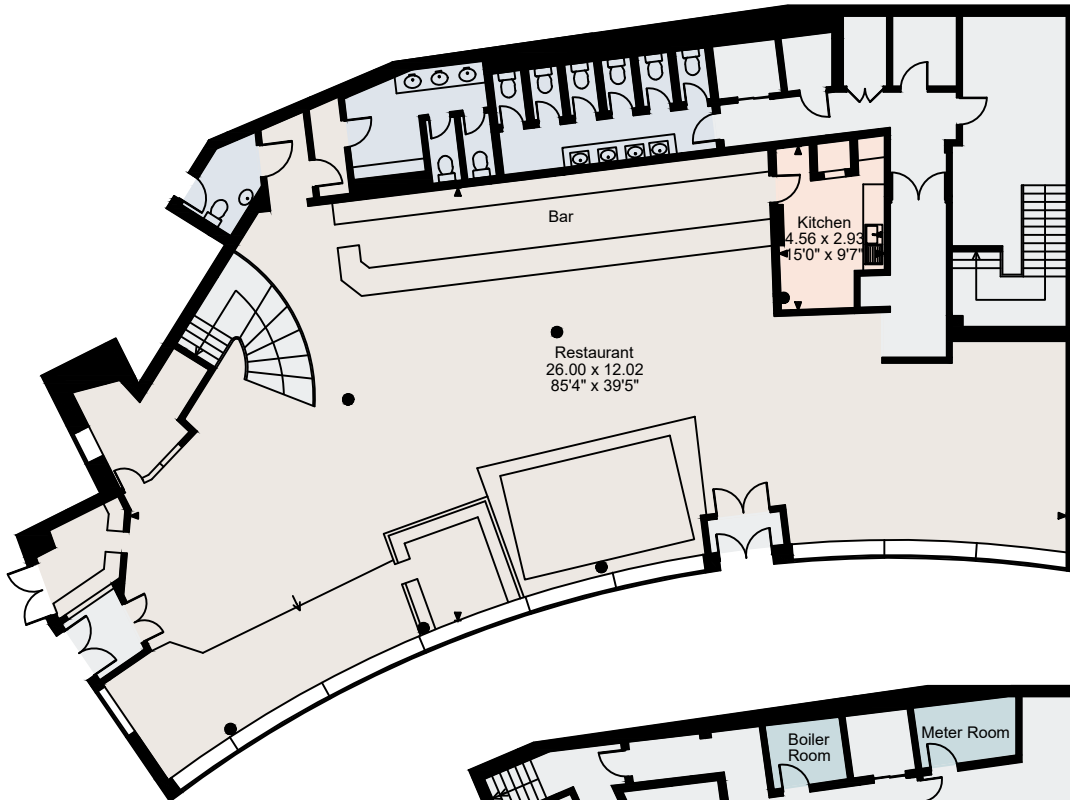
# Popworld, Chelmsford

Ground Floor gross internal area = 4,222 sq ft / 392 sq m

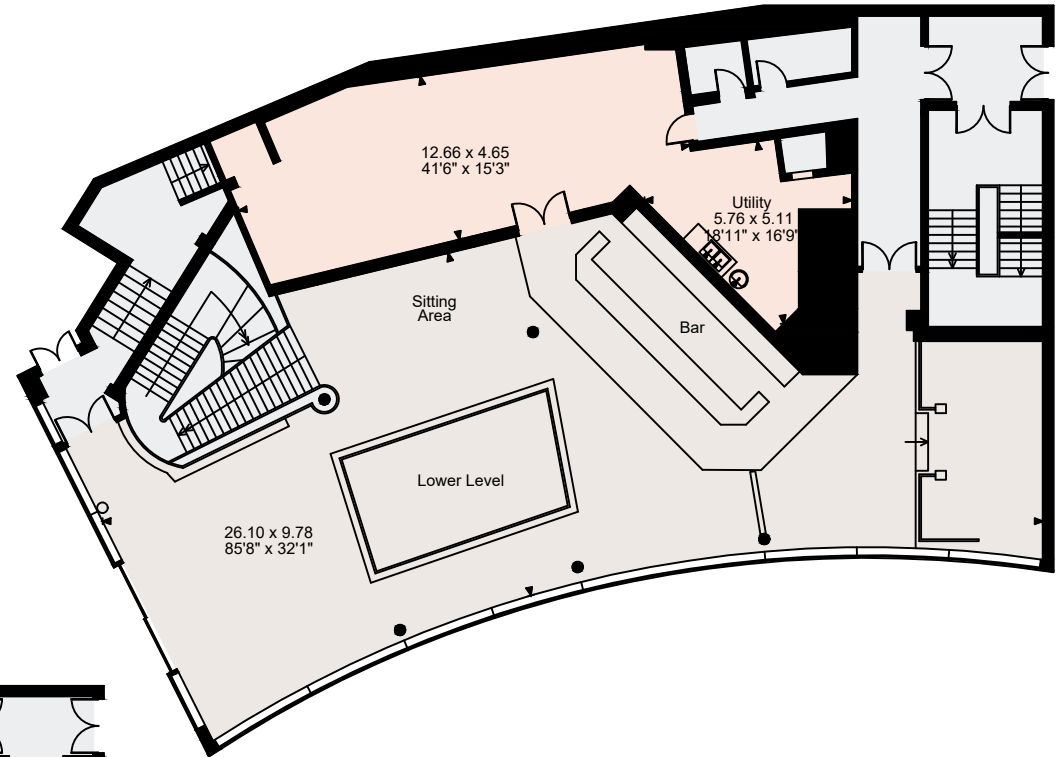
First Floor gross internal area = 3,829 sq ft / 356 sq m

Second Floor gross internal area = 1,840 sq ft / 171 sq m

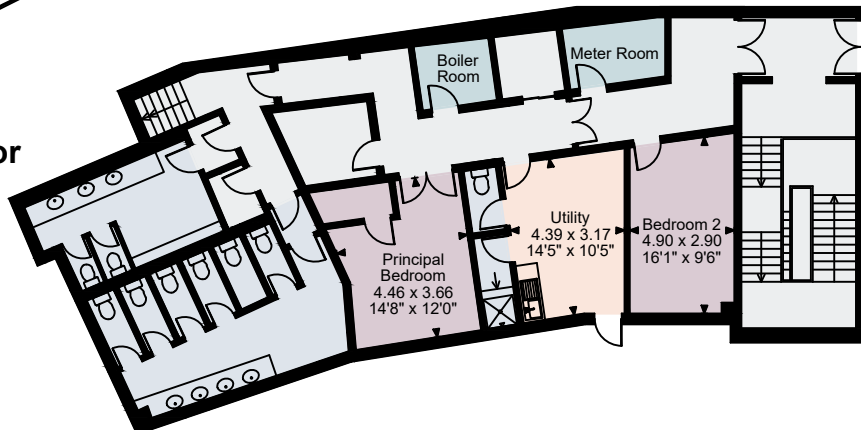
Total gross internal area = 9,891 sq ft / 919 sq m



Ground Floor



First Floor



Second Floor

**FOR ILLUSTRATIVE PURPOSES ONLY - NOT TO SCALE**

The position & size of doors, windows, appliances and other features are approximate only.

© ehouse. Unauthorised reproduction prohibited. Drawing ref. dig/8670615/JRV