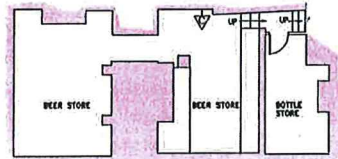


proposed plan

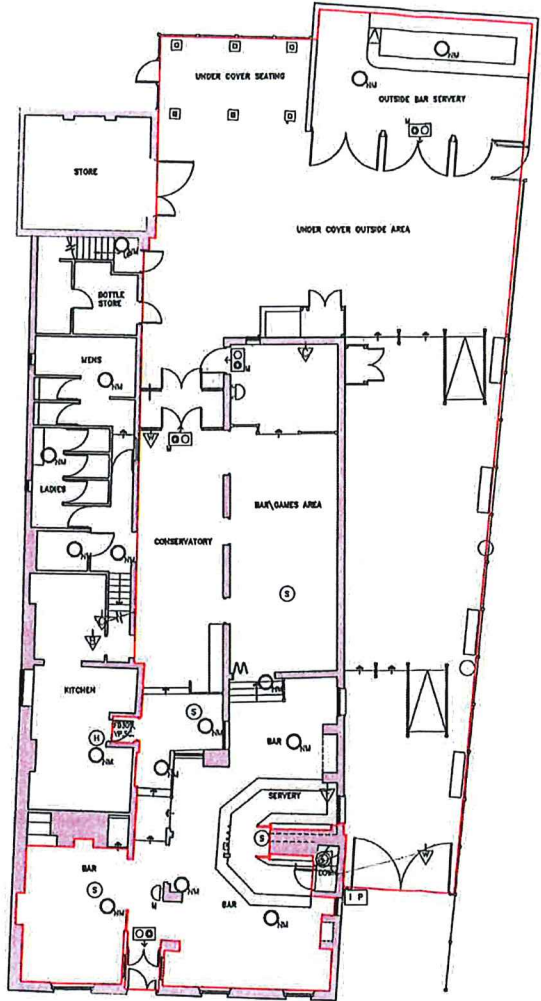
THIS DOCUMENT IS PRELIMINARY AND FOR INFORMATION ONLY. IT IS NOT TO BE USED FOR ANY OTHER PURPOSES WITHOUT THE WRITTEN PERMISSION OF THE AUTHOR.

KEY TO SYMBOLS

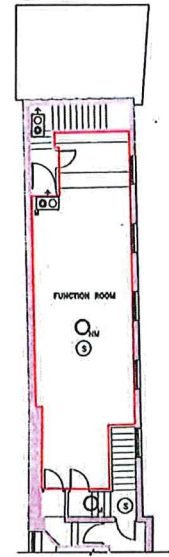
- ☉ SMOKE DETECTOR
- ⊙ HEAT DETECTOR
- ⌒ SOUNDER
- ⊙ CALL POINT
- ⌈⌋ INDICATING AND CONTROL PANEL
- ⊙ EMERGENCY LIGHT - NON MAINTAINED WITH 3 HOUR BATTERY BACK UP
- ⊙ EMERGENCY LIGHT - MAINTAINED WITH 3 HOUR BATTERY BACK UP
- ⊙ ILLUMINATED DIRECTIONAL FIRE EXIT SIGN - MAINTAINED WITH 3 HOUR BATTERY BACK UP
- ▽ 6 KG POWDER EXTINGUISHER
- ▽ 9 LITRE WATER EXTINGUISHER
- ▽ 2 LITRE CO2 EXTINGUISHER
- ▽ 6 LITRE FOAM EXTINGUISHER
- ▽ FIRE BLANKET
- FD30 30 MINUTE FIRE DOOR
- ⊕ SMOKE SEALS
- ⊕ SELF CLOSING
- ⊕ VISION PANEL



BASEMENT



GROUND FLOOR



FIRST FLOOR

RECEIVED  
03 APR 2017  
PUBLIC PROTECTION

B	17.03.17	Bar conversion added	1/11
A	23.10.13	Alterations added	
Rev	Date	Alterations added	Rev
CLIENT <b>WADWORTH &amp; CO LTD</b>			
PROJECT <b>THE CROWN, NEW PARK STREET, DEVIZES.</b>			
DRAWING <b>GROUND AND BASEMENT</b>			
GROUP	DATE	SCALE	
DJN	11.1.05	1:100	A1
DWG NO	1011-97-1	REV	B
DOLMAN BUILDING DESIGNERS CIVIL CONSULTANTS 12 RIVER STREET FARLEY, WILTSHIRE, SN6 6DL TEL: 01249 750400 FAX: 01249 750401 WWW.DOLMAN.CO.UK			