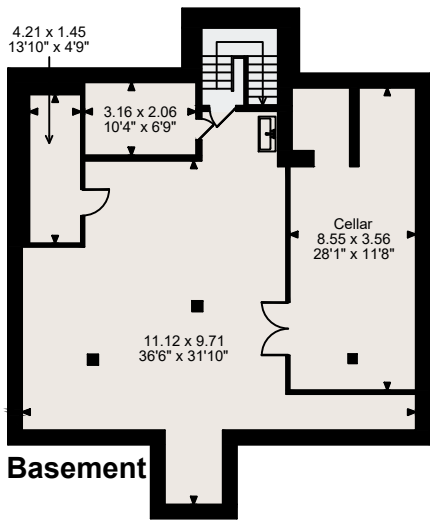
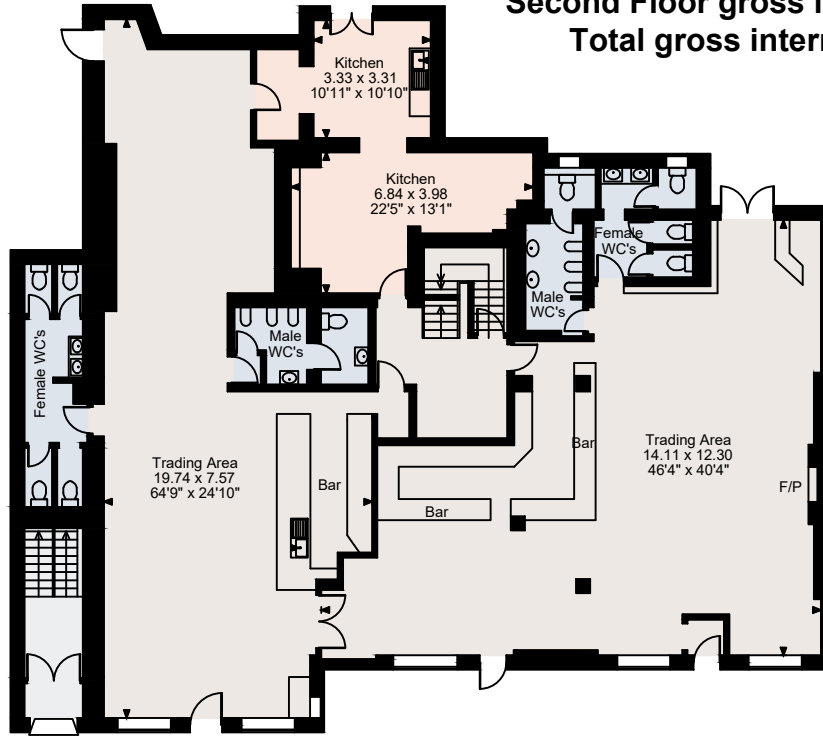


Rising Sun, Hornchurch

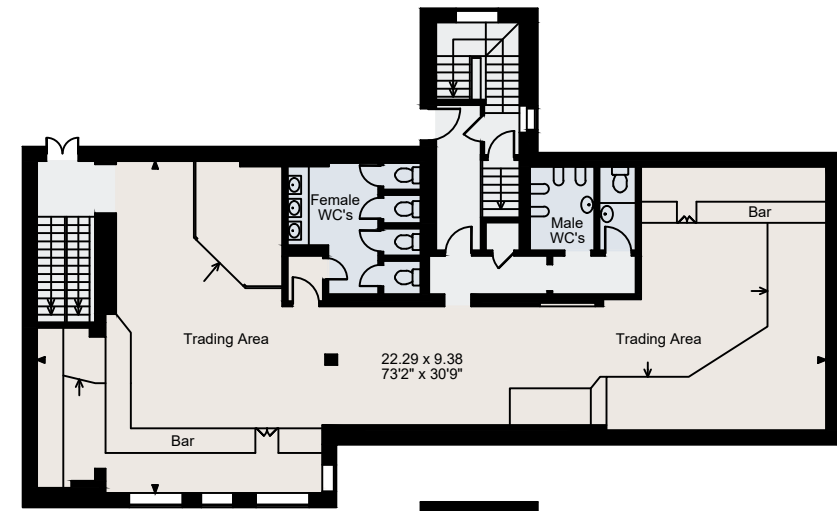
Basement gross internal area = 1,232 sq ft / 114 sq m
 Ground Floor gross internal area = 3,698 sq ft / 344 sq m
 First Floor gross internal area = 2,023 sq ft / 188 sq m
 Second Floor gross internal area = 1,553 sq ft / 144 sq m
 Total gross internal area = 8,506 sq ft / 790 sq m



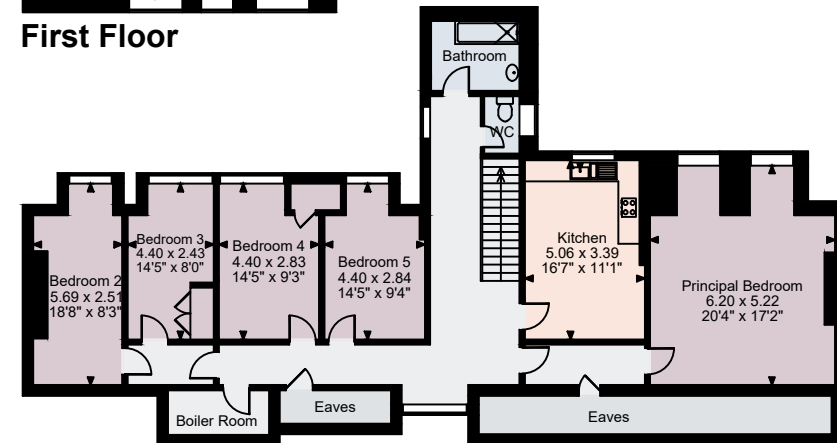
Basement



Ground Floor



First Floor



Second Floor

FOR ILLUSTRATIVE PURPOSES ONLY - NOT TO SCALE

The position & size of doors, windows, appliances and other features are approximate only.

© ehouse. Unauthorised reproduction prohibited. Drawing ref. dig/8593277/RIB