

EMERGENCY LIGHTING SYSTEM
 An independent self-contained non-maintained system, Type XCA180, will be installed in accordance with BS 5266-1: 2011, Emergency Lighting - Part 1; Code of Practice for Emergency Lighting of premises other than cinema, BS 5266-2: 2004, Emergency Lighting - Part 2; and BS 5266-3: 2004, Emergency Lighting Applications - Part 3. Luminaire will be located in the approximate positions indicated on this drawing.

- ☐ 3 hr self contained maintained emergency luminaire
- ☐ 3 hr self contained non-maintained emergency luminaire
- ☐ 3 hr self contained maintained emergency luminaire

FIRE ALARM SYSTEM
 A Fire Alarm system will be installed to BS 5839 - Part 1, 2013 Code of Practice for system design, installation, commissioning and maintenance, comprising of the following:
 The system subject to the following variations:
 a) As Clause 20.2, the manual call points in the Restaurant have been omitted to prevent malicious false alarms. A call point for staff activation is provided in a staff room.
 b) As Clause 22.3, smoke detection omitted from small coffers, where general smoke detector cover is adequate.

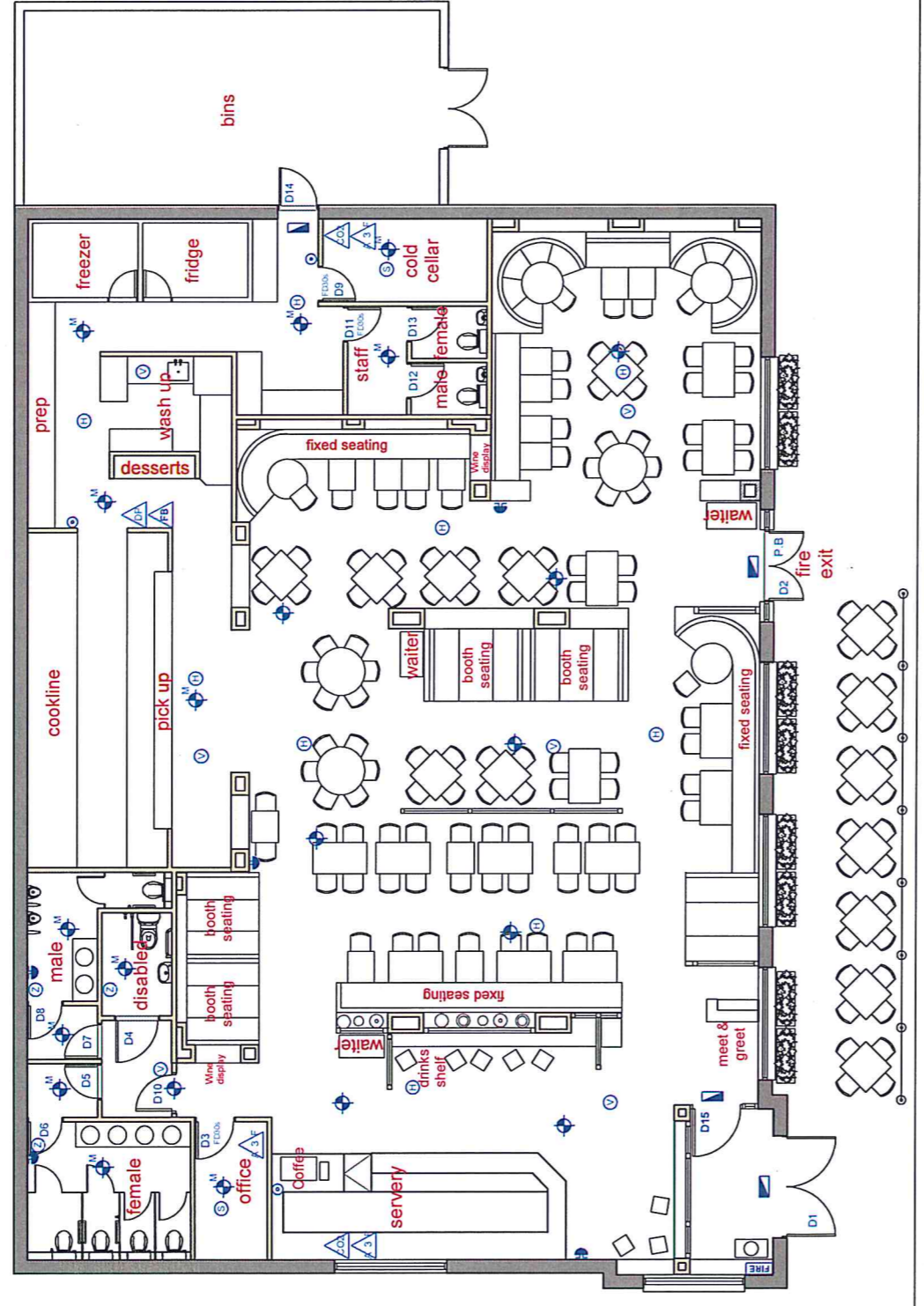
- ☐ Fire alarm panel
- ☐ Manual call point
- ☐ Electronic fire alarm sander
- ☐ Automatic heat detectors
- ☐ Automatic smoke detectors
- ☐ Zonon beacon

MUSIC TO AUTOMATICALLY SWITCH OFF UPON ACTIVATION OF FIRE ALARM.

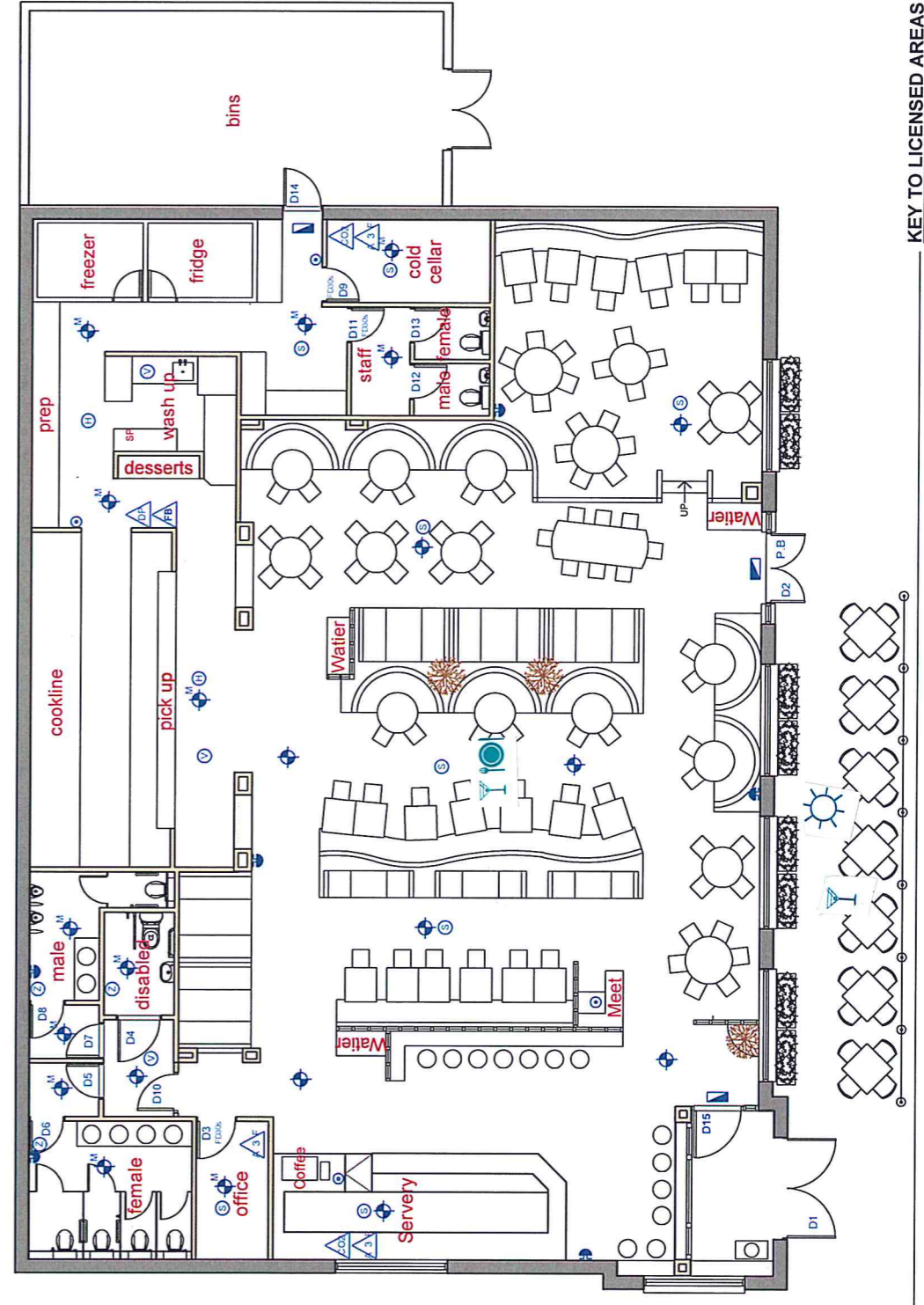
NOTE: FIRE ALARM AND EMERGENCY LIGHTING SYSTEM LAYOUTS AS SHOWN ON THIS DRAWING ARE INDICATIVE ONLY. FINAL INSTALLATIONS ARE TO BE AS PER THE ELECTRICAL INSTALLATIONS CONTRACTORS DRAWINGS

All fire exit signage and other fire notices are to comply with requirements of BS 5499 part 1, 1990.

- FD00k** Half hour fire resistant door and frame, self closing and fitted with combined intumescent strip and cold smoke seal. To be fitted with fire door keep shut signs
- FD00s** One hour fire resistant door and frame, self closing and fitted with combined intumescent strip and cold smoke seal. To be fitted with fire door keep shut signs
- P-B** Panic release push bar door fastening
- VP** Vision panel: 8mm clear Georgian wired, or clear fire stop glass fixed by HV glazing beads set between min 900mm and 1500mm above floor
- AV** stiff multi purpose extinguisher
- AW** 5.5 litre BS 5423 electrically non-conductive 13a + 113b rating
- AE** 6 litre wet chemical extinguisher
- AC** co2 extinguisher
- AB** fire blanket



EXISTING



PROPOSED

KEY TO LICENSED AREAS

- ☐ Sale & Supply of Alcohol
- ☐ Late Night Refreshment
- ☐ Regulated entertainment
- ☐ Outside consumption

REVISIONS	
REV	DESCRIPTION

DO NOT SCALE
 ALL DIMENSIONS TO BE CHECKED ON SITE BEFORE ANY WORK COMMENCES. CHANGES TO BE REPORTED TO THE SUPERVISING OFFICER.

BXBX
 INTERIOR DESIGN / ARCHITECTURE

8A SAVILLE ROW
 NEWCASTLE UPON TYNE
 NE1 5AE
 T: 0191 221 2691 F: 0191 261 4912
 E: studio@bxinteriors.com

CLIENT The Restaurant Group
 5-7 Marshalsea Road
 LONDON
 SE1 1EP

PROJECT CHIQUITOS
 NOTTINGHAM

TITLE EXISTING & PROPOSED LICENSING

DRWG. NO. 195-15
REV.

SCALE 1:100 @ A2
DATE

LN 1:100 @ A2
AUG 15