

LICENCE KEY

FIRE AUTHORITY REQUIREMENTS

- F30** HALF HOUR FIRE RESISTANT WITH SMOKE SEALS & INTUMESCENT STRIPS
- F60** ONE HOUR FIRE RESISTANT WITH SMOKE SEALS & INTUMESCENT STRIPS
- VP** VISION PANEL
- PB** PANIC BOLT
- SC** SELF-CLOSING
- SCA** SELF-CLOSING AUTOMATIC RELEASE
- FL** FUSIBLE LINK
- DS** DOOR SELECTOR
- SH** SPY HOLE
- S13** 'FIRE DOOR KEEP SHUT' 10mm LETTERS TO BOTH SIDES OF DOOR LEAF

- S14** 'FIRE DOOR KEEP LOCKED' 10mm LETTERS TO BOTH SIDES OF DOOR LEAF
- S20** 'FIRE ESCAPE KEEP CLEAR' 10mm LETTERS TO BOTH SIDES OF DOOR LEAF
- S22** 'FIRE EXIT' 20 mm LETTERS
- S25** 'PUSH BAR TO OPEN' 20mm LETTERS DIRECTIONAL ARROW (GREEN)
- FRG** FIRE RESISTING GLAZING ELEMENT
- IX** ILLUMINATED SUSPENDED 'FIRE EXIT' SIGN 75mm LETTERS
- XL** AREA COVERED BY ESCAPE LIGHTING
- SD** AREA COVERED BY SMOKE DETECTORS
- HD** AREA COVERED BY HEAT DETECTORS
- Φ** FIRE ALARM CALL POINT
- FAIP** FIRE ALARM INDICATOR PANEL
- △** FIRE BLANKET IN CONTAINER
- △** CARBON DIOXIDE FIRE EXTINGUISHER
- △** 9 LITRE WATER EXTINGUISHER

- △** DRY POWDER EXTINGUISHER
- △** FOAM FIRE EXTINGUISHER
- △** ALARM WARNING DEVICE

ALL WALLS AND PARTITIONS TO BE MINIMUM HALF HOUR FIRE RESISTANT

EMERGENCY LIGHTING TO COMPLY WITH BS 5266 PART 1

FIRE SAFETY RELATED SIGNS AND NOTICES TO COMPLY TO BS 5499

FIRE FIGHTING EQUIPMENT TO COMPLY WITH BS 5306 WALL AND CEILING LININGS ARE TO BE CLASS 1 SURFACE SPREAD OF FLAME (AS DEFINED BY BS 476

CLASS 0 IN ESCAPE ROUTES

UPHOLSTERED SEATING FURNITURE TO SATISFY THE FOLLOWING :-

- \*IGNITION SOURCE (CIGARETTE TEST) AS SPECIFIED IN BS5852 PART 1
- FIRE TEST FOR FURNITURE METHODS OF TEST FOR THE IGNITABILITY BY SMOKERS.
- \*BS 5882 PART 2 FIRE TEST FOR FURNITURE-METHODS OF TEST FOR THE IGNITABILITY OF UPHOLSTERED COMPOSITES FOR TESTING BY FLAMING SOURCE, MINIMUM TEST TO BE CRIB IGNITION SOURCE 5.
- FABRICS THAT HAVE HAD A FLAME RETARDANT TREATMENT TO PASS THE WATER SDAK TEST AS DETAILED BY BS5651. TEST CERTIFICATE TO BE SUBMITTED TO FIRE AUTHORITY.
- CURTAINS AND DRAPES TO SATISFY TYDE B, PERFORMANCE REQUIREMENTS TO BS 5867 PART 2.
- ARTIFICIAL FOLIAGE AND DECORATIVE EFFECTS TO BE RETARDANT TO THE SATISFACTION OF THE FIRE AUTHORITY.

VISIBILITY

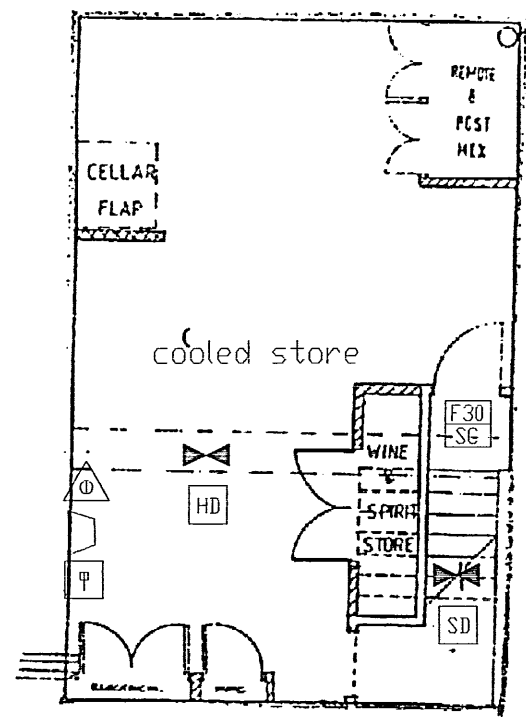
CCTV CAMERA AT HIGH LEVEL

TOILETS

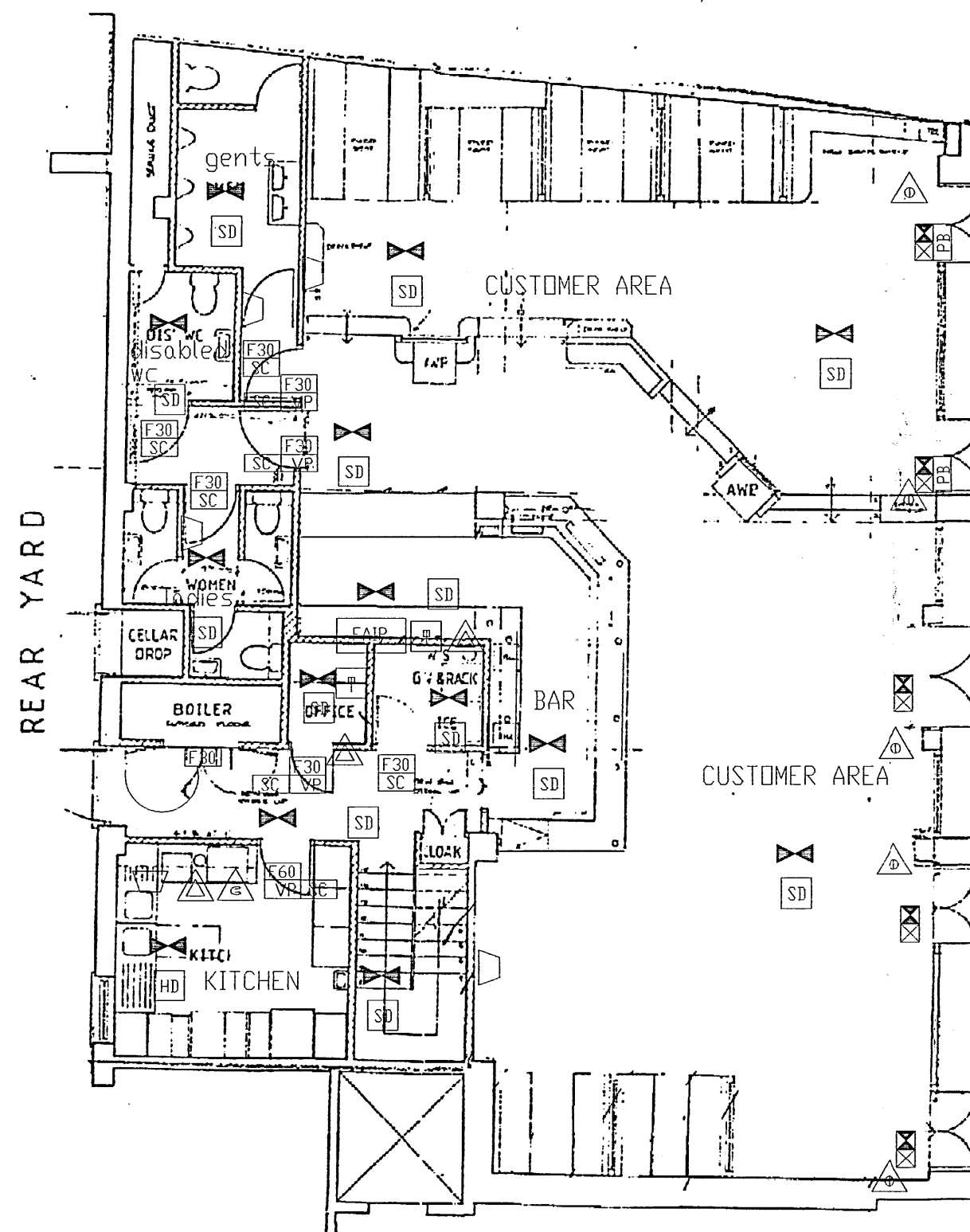
ALL WALLS TILED TO FULL HEIGHT. SANITARY FACILITIES HAVE BEEN DESIGNED TO BS 6465: PART 1:1994 CODE OF PRACTICE FOR THE SCALE AND PROVISION, SELECTION AND INSTALLATION OF SANITARY APPLIANCES

KITCHEN

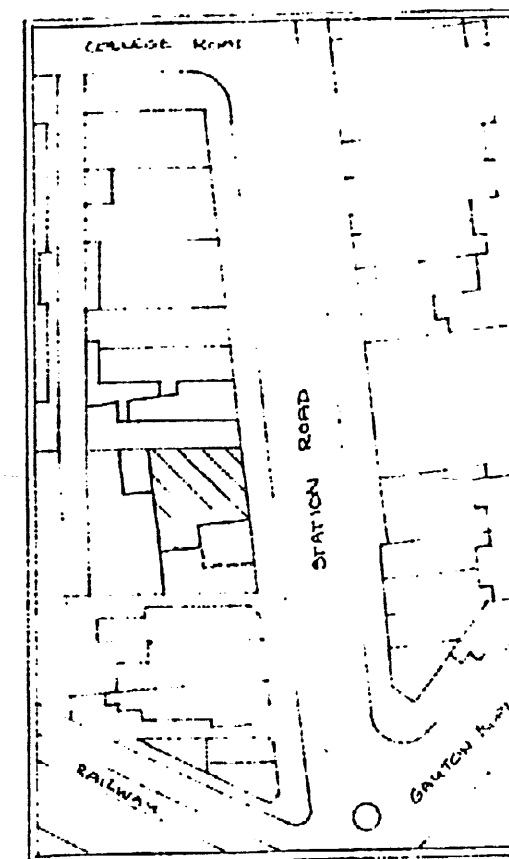
ALL WALLS TO BE TILED TO FULL HEIGHT



BASEMENT PLAN



GROUND FLOOR



LOCATION PLAN  
SCALE 1:1250

lawrence beckingham field LLP ARCHITECTS

The Sail Loft, Limehouse Court, 3-11 Dod Street, London E14 7EQ - Tel: +44(0) 20 7536 2100 Fax: +44(0) 20 7538 4442  
Initial.surname@lbfarchitects.co.uk www.lbfarchitects.co.uk Limited Liability Partnership No. OC303795

Project:

373-375 STATION ROAD  
HARROW

Client:

JD WETHERSPOON PLC

Drawing:

LICENSE DRAWING  
AS APPROVED

Scale: Drawn by: Checked by: Date:  
1:100 Not checked DEC 1990

Drg no:

322/LO5

DO NOT SCALE FROM THIS DRAWING. ALL DIMENSIONS TO BE CHECKED ON SITE. REFER ANY DISCREPANCIES TO ARCHITECT. THIS DRAWING IS SUBJECT TO COPYRIGHT.