

# WESTGATE

21 HOMER ROAD / SOLIHULL / B91 3QG

| FLOOR        | SQ FT          | SQ M          |
|--------------|----------------|---------------|
| Seventh      | 8,543          | 794           |
| Sixth        | 15,414         | 1,432         |
| Fifth        | 18,345         | 1,704         |
| Fourth       | 18,345         | 1,704         |
| Third        | 18,489         | 1,718         |
| Second       | 13,662         | 1,269         |
| First        | 12,071         | 1,121         |
| Mezzanine    | 8,288          | 770           |
| Ground       | 5,915          | 550           |
| <b>TOTAL</b> | <b>119,071</b> | <b>11,062</b> |

# CAR PARK

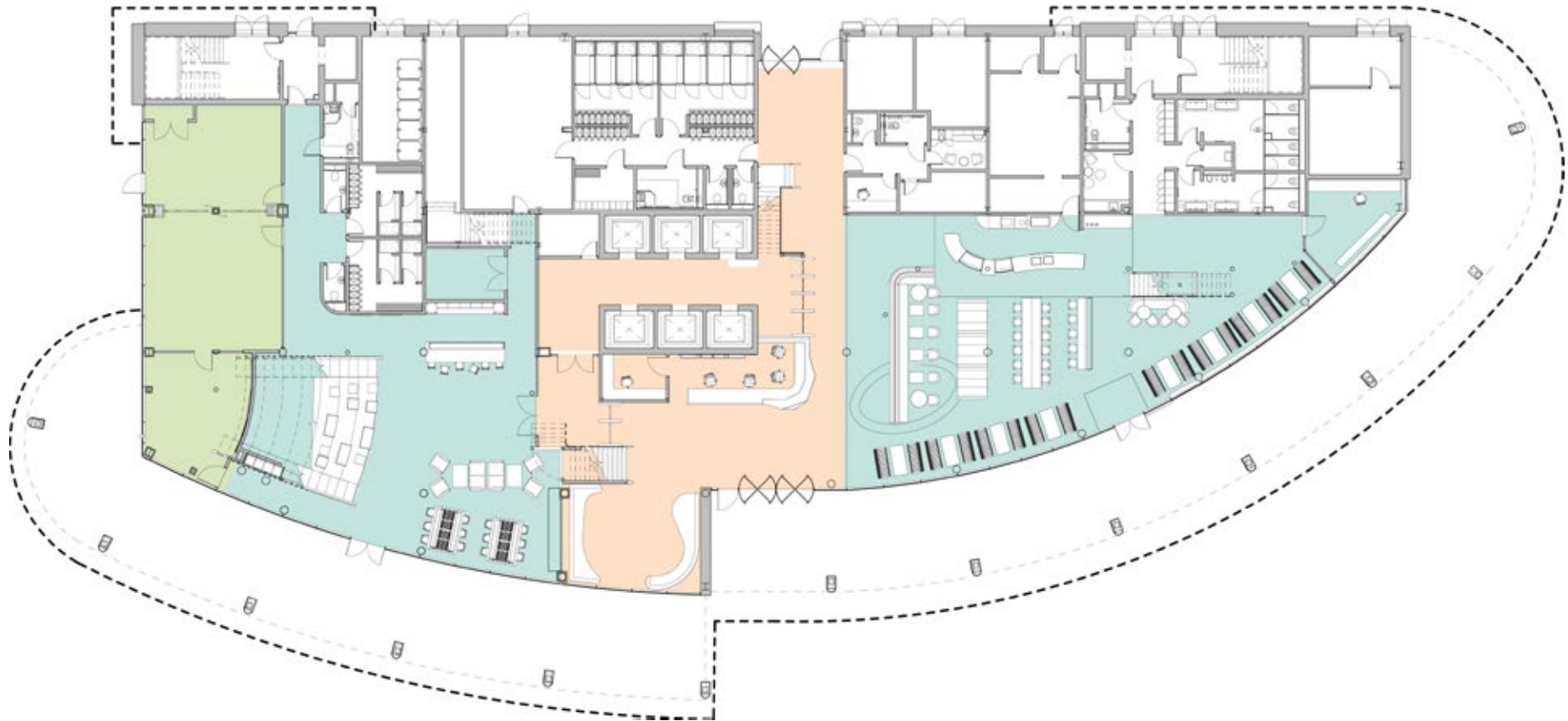
52 car parking spaces



# GROUND FLOOR

Reception and collaboration space  
5,915 sq ft (550 sq m)

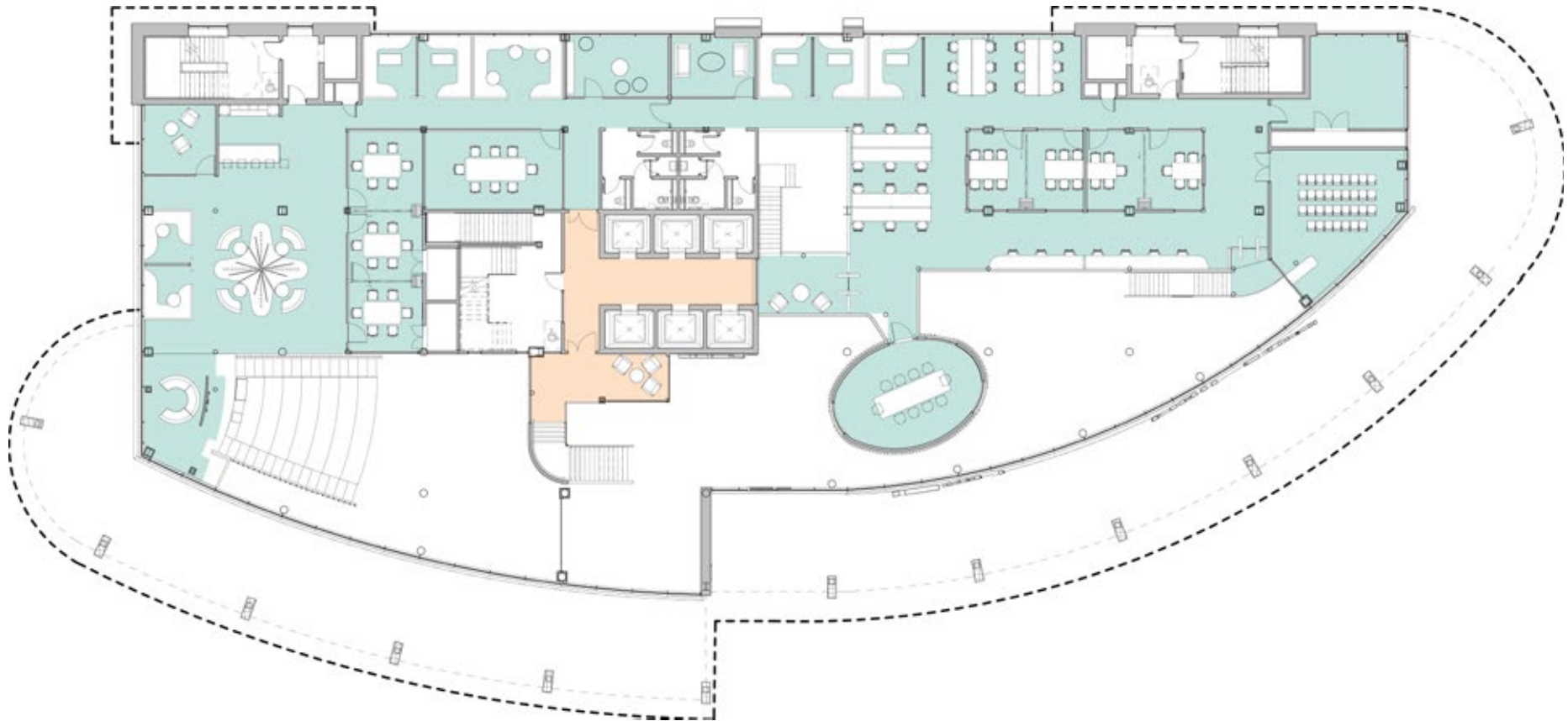
*Zoom in to see detail*



*Approximate measurements in accordance to IPMS3.*

# MEZZANINE FLOOR

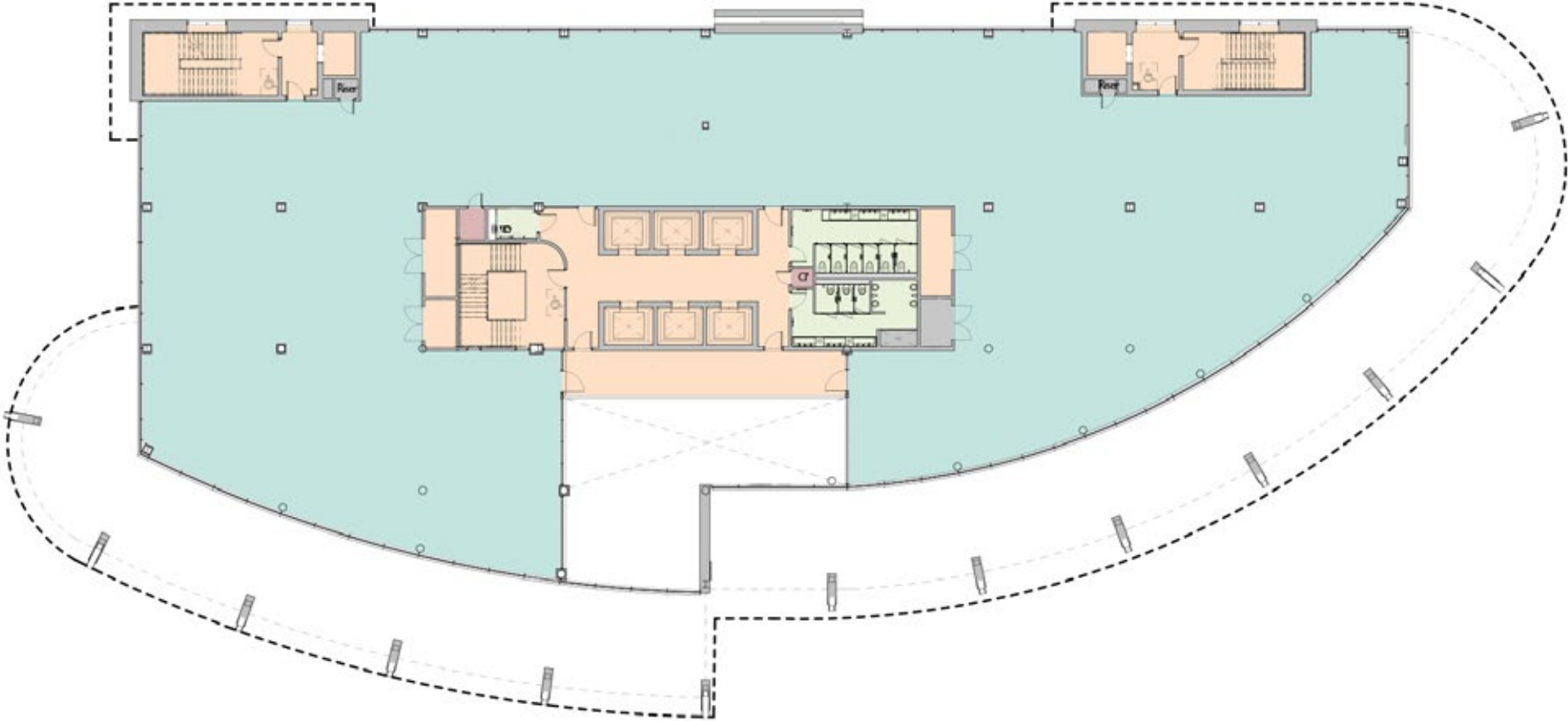
Collaboration space  
8,288 sq ft (770 sq m)



*Approximate measurements in accordance to IPMS3.*

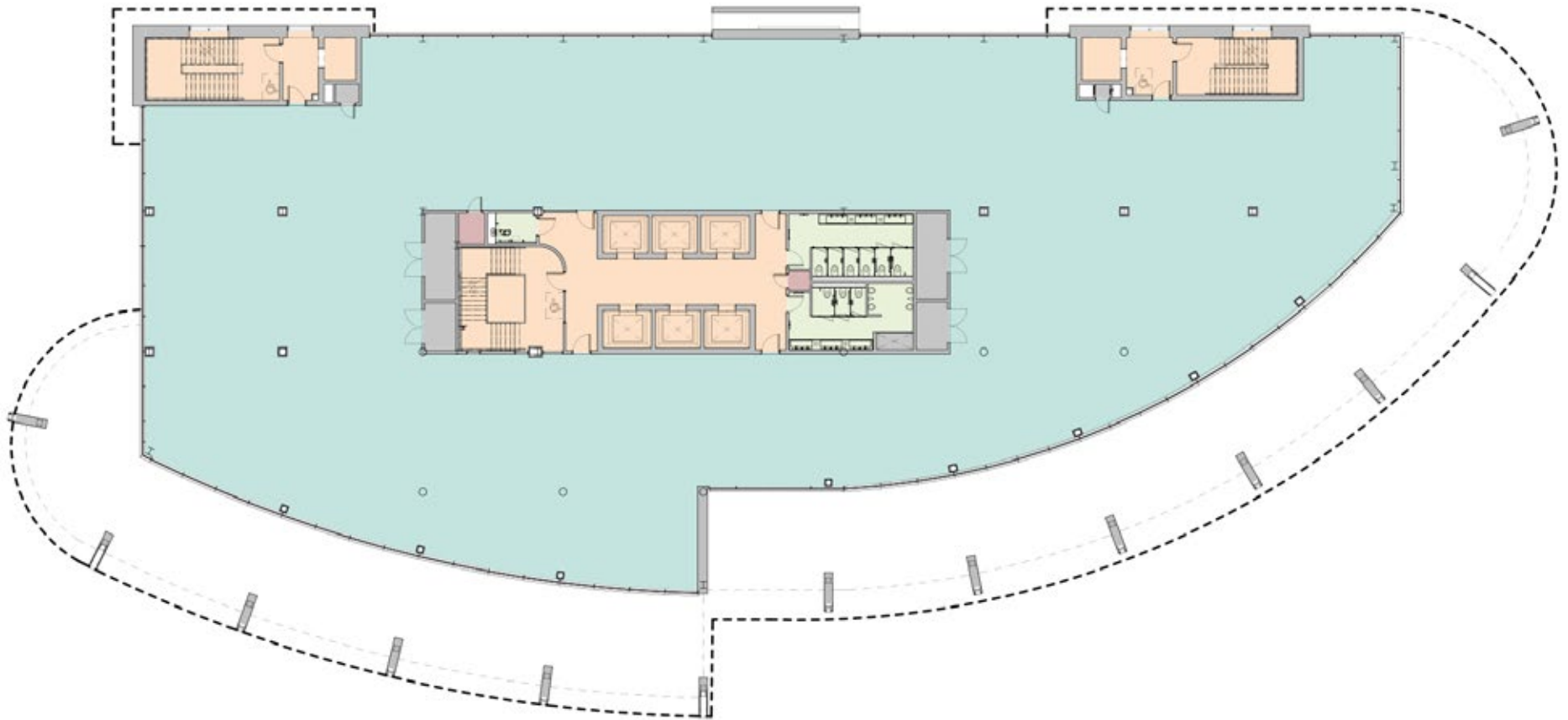
# FIRST FLOOR

12,071 sq ft (1,144 sq m)



# SECOND FLOOR

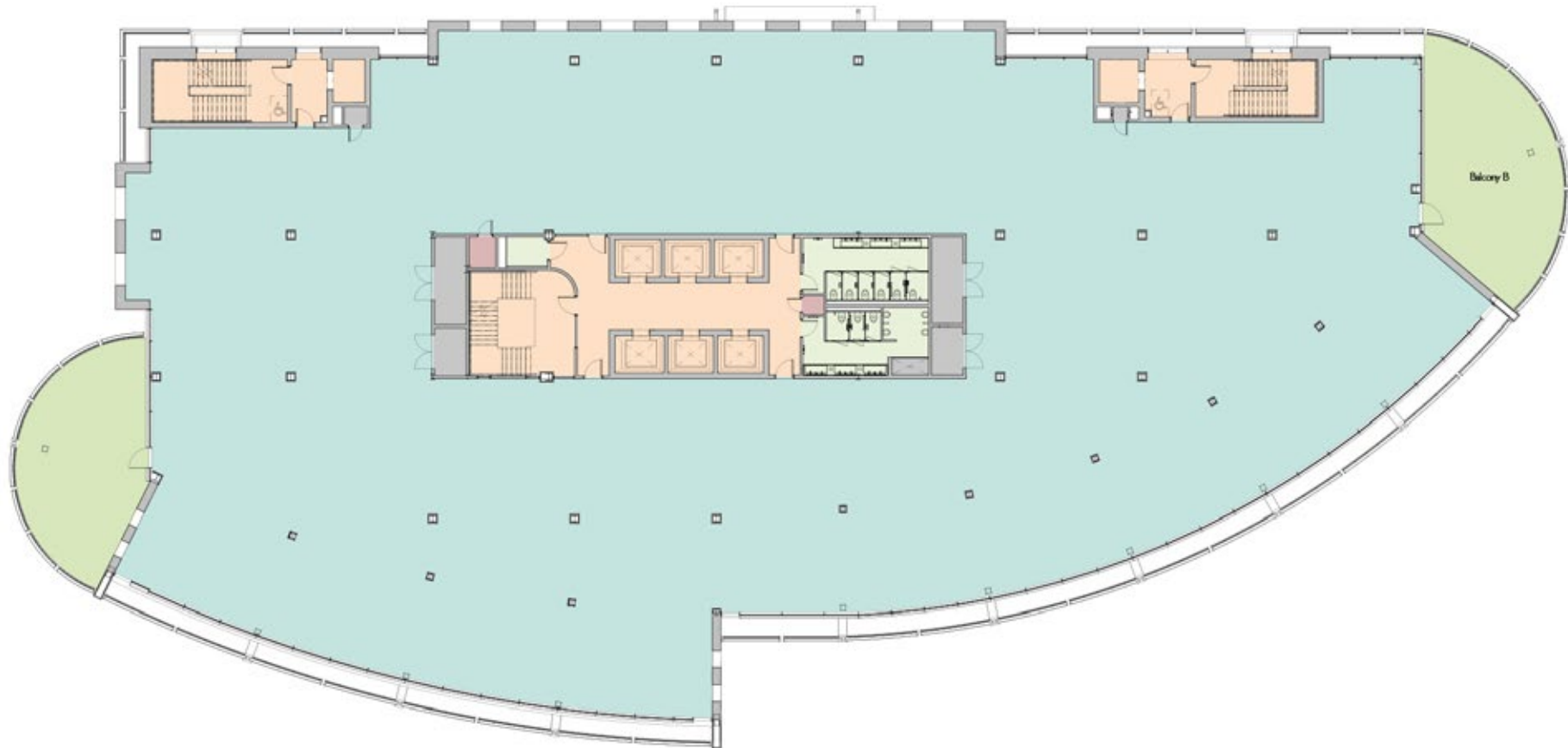
13,662 sq ft (1,269 sq m)



*Approximate measurements in accordance to IPMS3.*

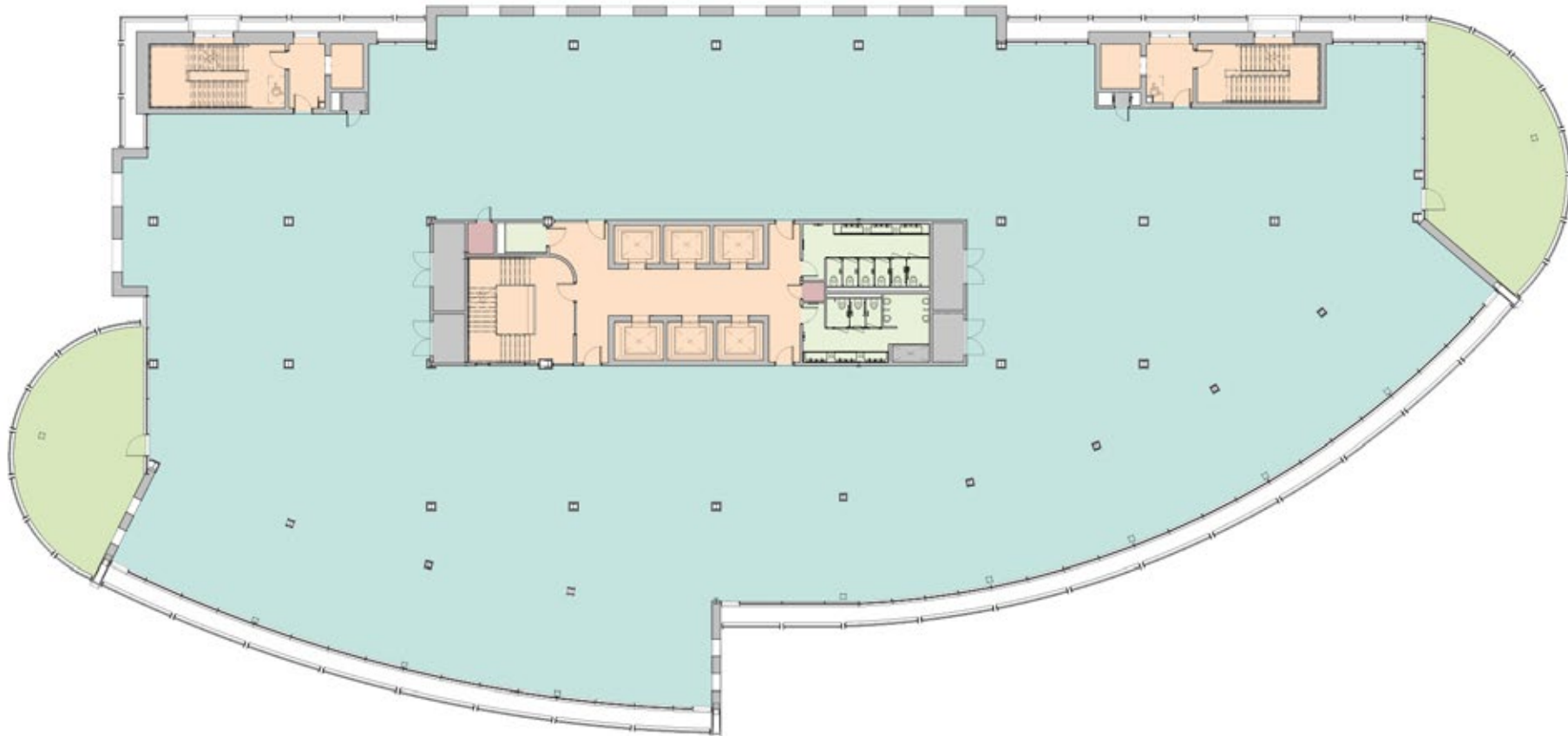
# THIRD FLOOR

18,489 sq ft (1,718 sq m)



# TYPICAL FLOOR (4<sup>TH</sup> - 5<sup>TH</sup>)

18,345 sq ft (1,704 sq m)

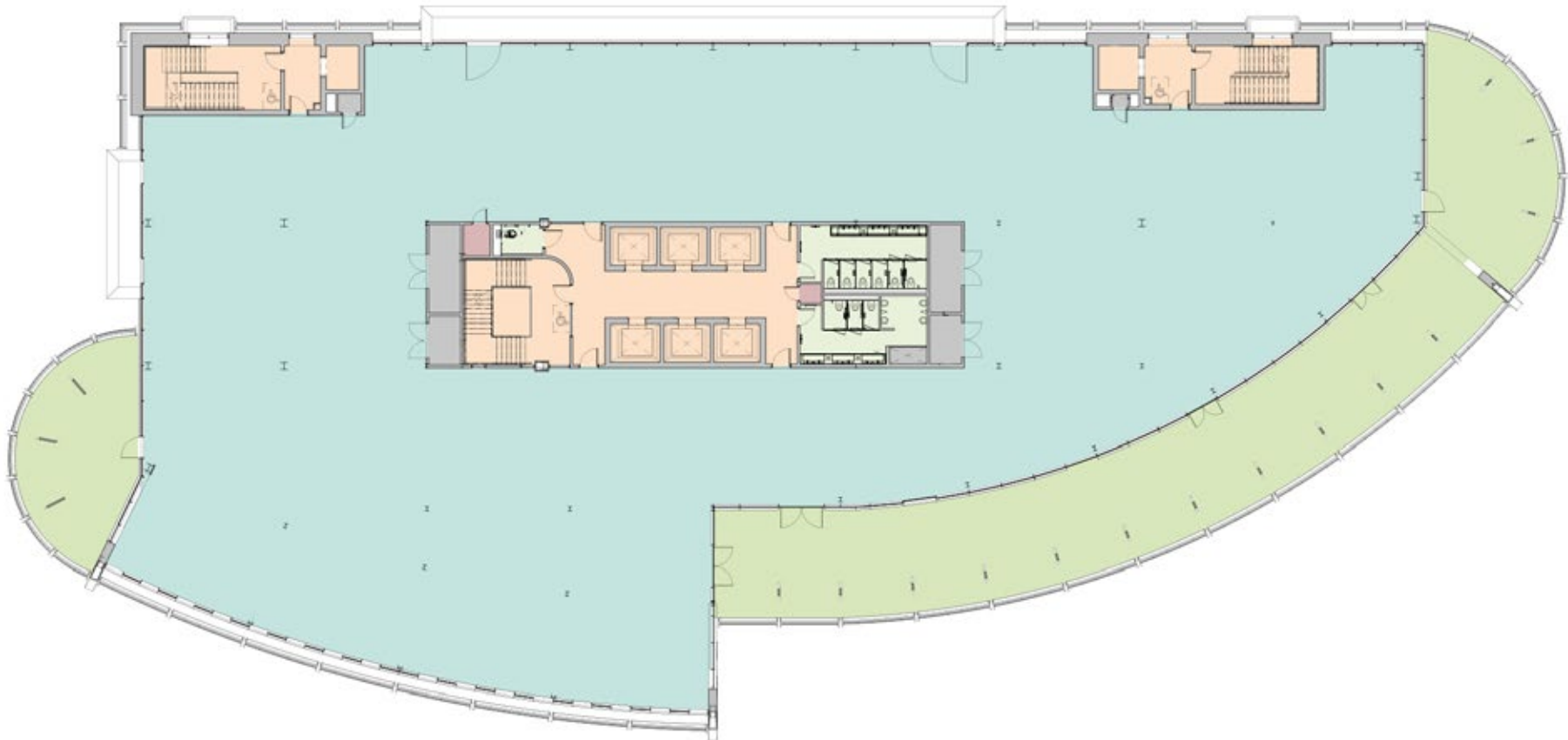


*Approximate measurements in accordance to IPMS3.*



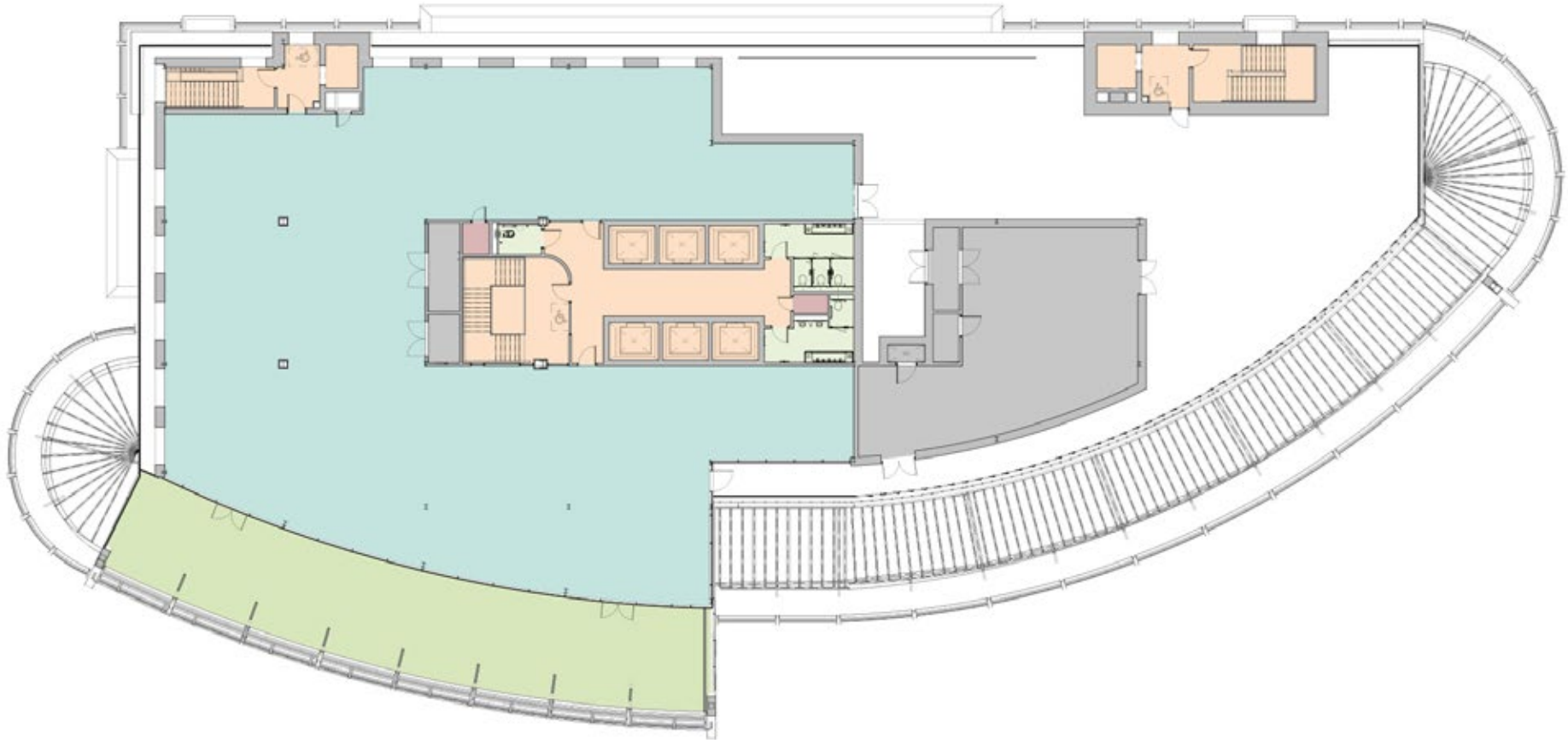
# SIXTH FLOOR

15,414 sq ft (1,432 sq m)



# SEVENTH FLOOR

8,543 sq ft (794 sq m)



*Approximate measurements in accordance to IPMS3.*

# TYPICAL FLOOR FIT-OUT

176 WORKSTATIONS



- 176 x workstations
- 4 x private office pods
- 1 x 12 person meeting room
- 7 x 8 person meeting rooms
- 9 x 2 person meeting rooms
- 1 x 3 person meeting room
- Visitor lounge/soft seating
- 2 x tea points
- Stores
- Print area
- Breakout areas

## KEY

- Workspace/Meeting rooms
- Breakout
- Stores

# TYPICAL FLOOR FIT-OUT

158 WORKSTATIONS



- 158 x workstations
- 2 x private office pods
- 7 x 8 person meeting rooms
- 6 x 3 person meeting rooms
- 2 x 2 person meeting room
- Various pod rooms
- Visitor lounge/soft seating
- 2 x tea points with dining
- Stores
- Print area
- Breakout areas

## KEY

- Workspace/Meeting rooms
- Breakout
- Stores

A large graphic on the left side of the page, consisting of a teal triangle pointing downwards and to the right, separated from the rest of the page by a white diagonal line.

WESTGATE

[westgate-solihull.co.uk](http://westgate-solihull.co.uk)