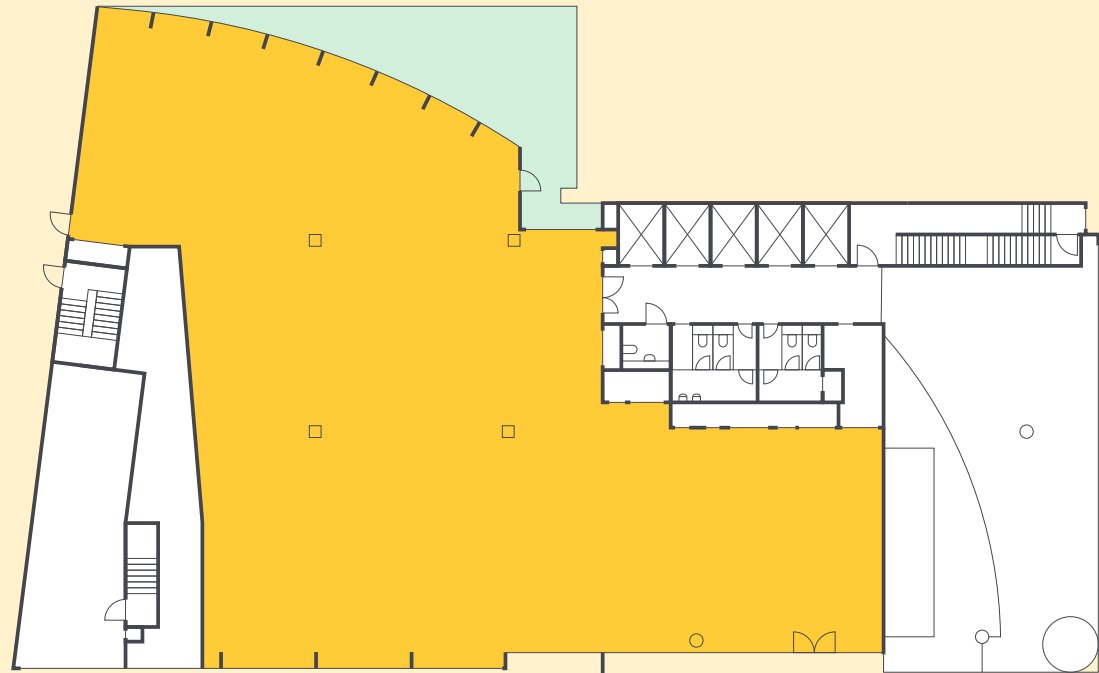


45 CHURCH ST

I WANT
7,780 SQ FT
ON THE
GROUND FLOOR

GROUND FLOOR

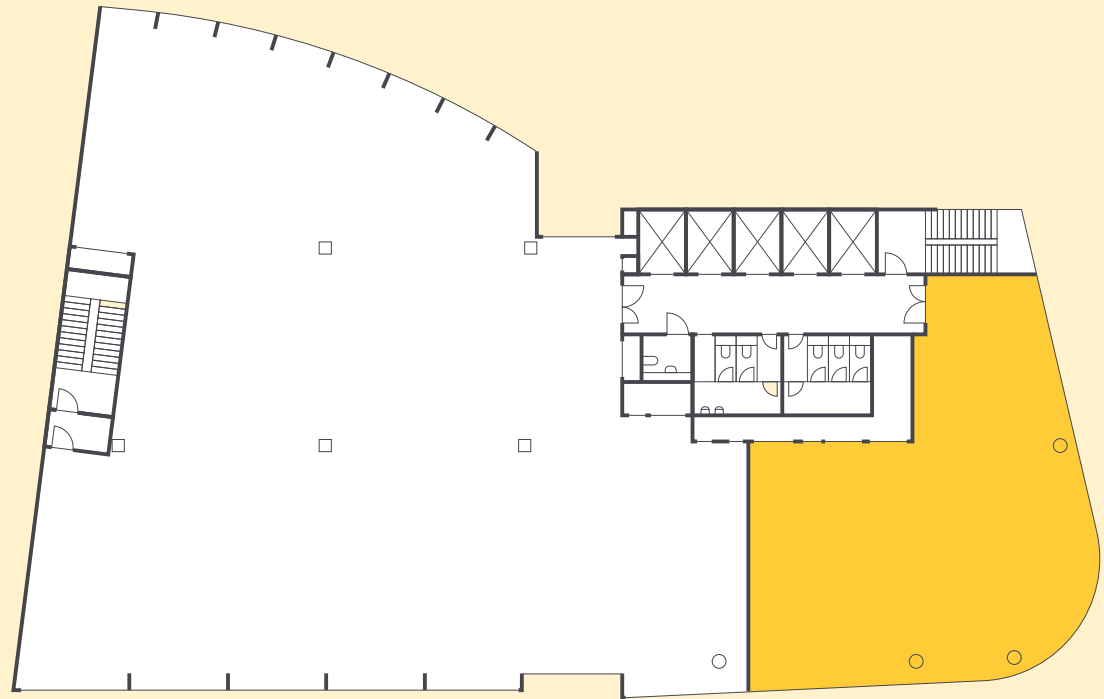
N



PLANS NOT TO SCALE. FOR INICATIVE PURPOSES ONLY

I WANT
2,203 SQ FT
ON THE
SEVENTH FLOOR

SEVENTH FLOOR



I WANT
9,091 SQ FT
ON THE
TENTH FLOOR
AND TO ENJOY
PANORAMIC
VIEWS OF THE
CITY FROM MY
ROOF TERRACE

TENTH FLOOR

