

FLOOR AREAS

GROUND FLOOR



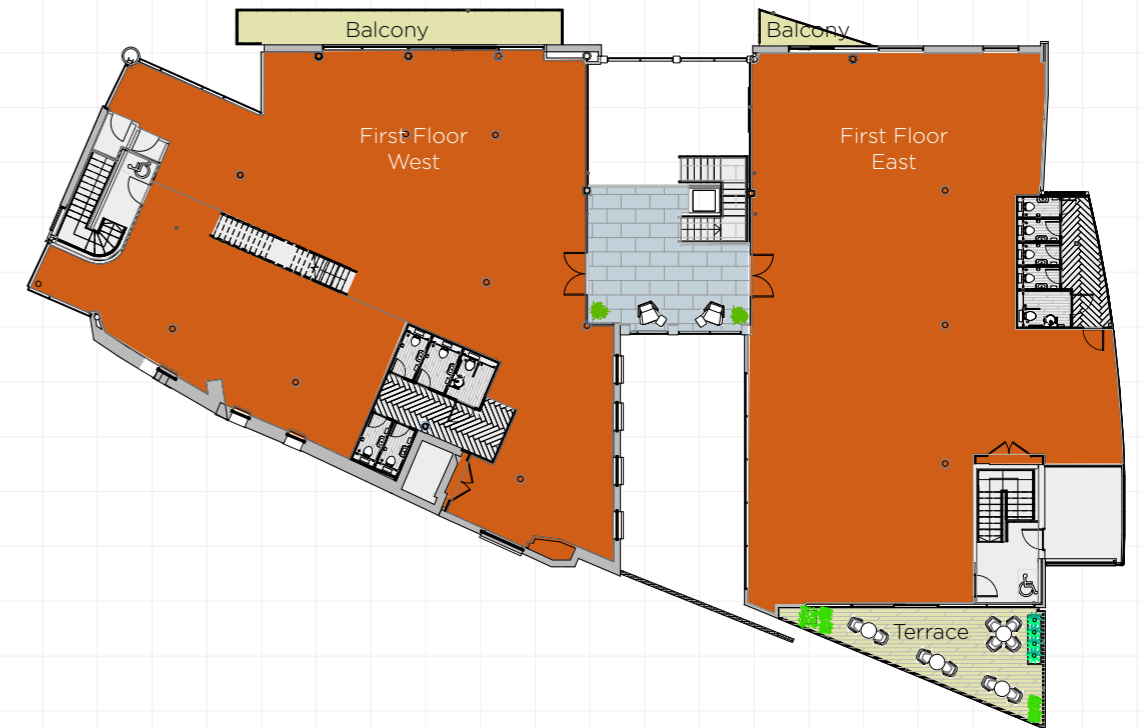
Floor plans not to scale, for identification purposes only

AVAILABLE AS A SELF CONTAINED BUILDING OR UP TO FOUR INDIVIDUAL SPACES FROM X SQ FT

| | |
|--------|--------------|
| GROUND | 7,553 SQ FT |
| FIRST | 8,627 SQ FT |
| TOTAL | 16,180 SQ FT |

Based on IPMS 3 (Offices)

FIRST FLOOR



Floor plans not to scale, for identification purposes only

SPACE PLAN HQ OPTION

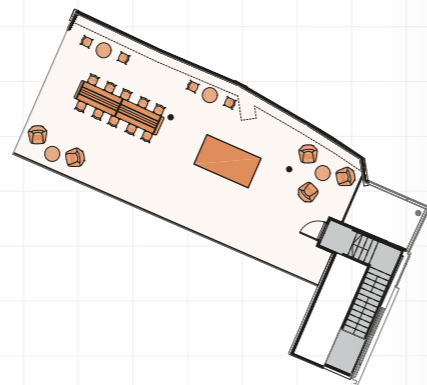


FIRST FLOOR: 7,615 SQ FT

- 5 INFORMAL MEETING ZONES
- 1 8 PERSON MEETING ROOM
- 2 2 PERSON MEETING ROOMS
- 1 KITCHEN/BREAKOUT SPACE
- 82 OPEN PLAN DESKS (1,600MM)

FIRST FLOOR MEZZANINE: 1,012 SQ FT

- 10 OPEN PLAN DESKS + BREAKOUT/LOUNGE SPACE



Floor plans not to scale, for identification purposes only



GROUND FLOOR: 7,553 SQ FT

- 1 RECEPTION
- 1 LOUNGE
- 1 KITCHEN/BREAKOUT SPACE
- 1 20 PERSON BOARD ROOM
- 16 PERSON MEETING ROOM
- 2 2 PERSON OFFICES
- 3 INFORMAL MEETING ZONES
- 58 OPEN PLAN DESKS (1,600MM)



SPACE PLAN MULTI TENANTED OPTION



FIRST FLOOR LEFT WING: 3,377 SQ FT

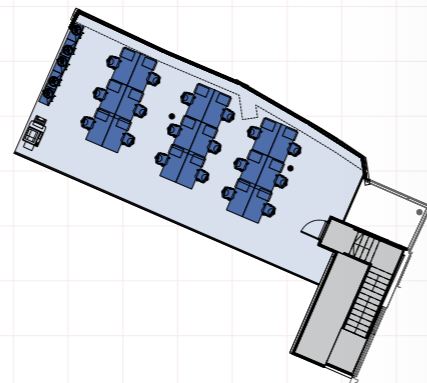
- 34 OPEN PLAN DESKS (1,600MM)
- 1 KITCHEN/BREAKOUT SPACE
- 1 RECEPTION
- 1 10 PERSON MEETING ROOM
- 2 INFORMAL MEETING ZONES
- 2 PRIVATE BALCONIES

FIRST FLOOR RIGHT WING: 3,741 SQ FT

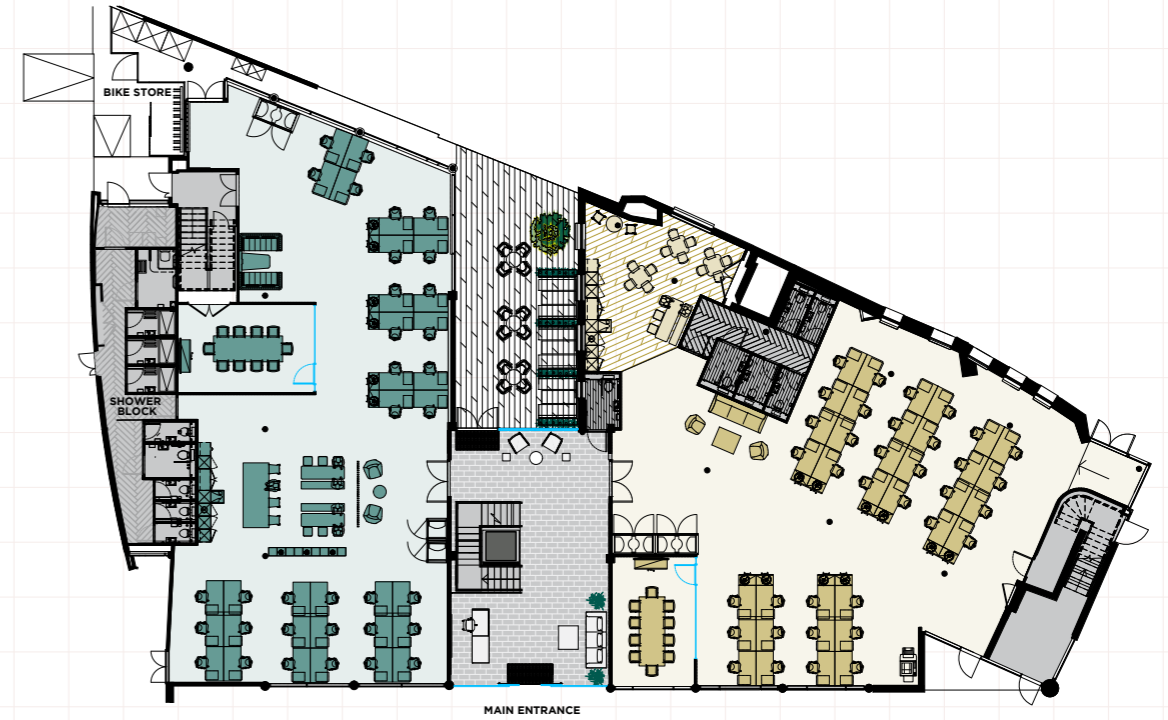
- 38 OPEN PLAN DESKS (1,600MM)
- 1 KITCHEN/BREAKOUT SPACE
- 1 RECEPTION
- 1 10 PERSON MEETING ROOM
- 3 INFORMAL MEETING ZONES
- 1 PRIVATE BALCONY

FIRST FLOOR MEZZANINE: 1,012 SQ FT

- 18 OPEN PLAN DESKS (1,600MM)



Floor plans not to scale, for identification purposes only



GROUND FLOOR LEFT WING: 3,209 SQ FT

- 34 OPEN PLAN DESKS (1,600MM)
- 1 KITCHEN/BREAKOUT SPACE
- 1 RECEPTION
- 1 10 PERSON MEETING ROOM
- 3 INFORMAL MEETING ZONES

GROUND FLOOR RIGHT WING: 3,561 SQ FT

- 36 OPEN PLAN DESKS (1,600MM)
- 1 KITCHEN/BREAKOUT SPACE
- 1 RECEPTION
- 1 10 PERSON MEETING ROOM
- 1 INFORMAL MEETING ZONE

