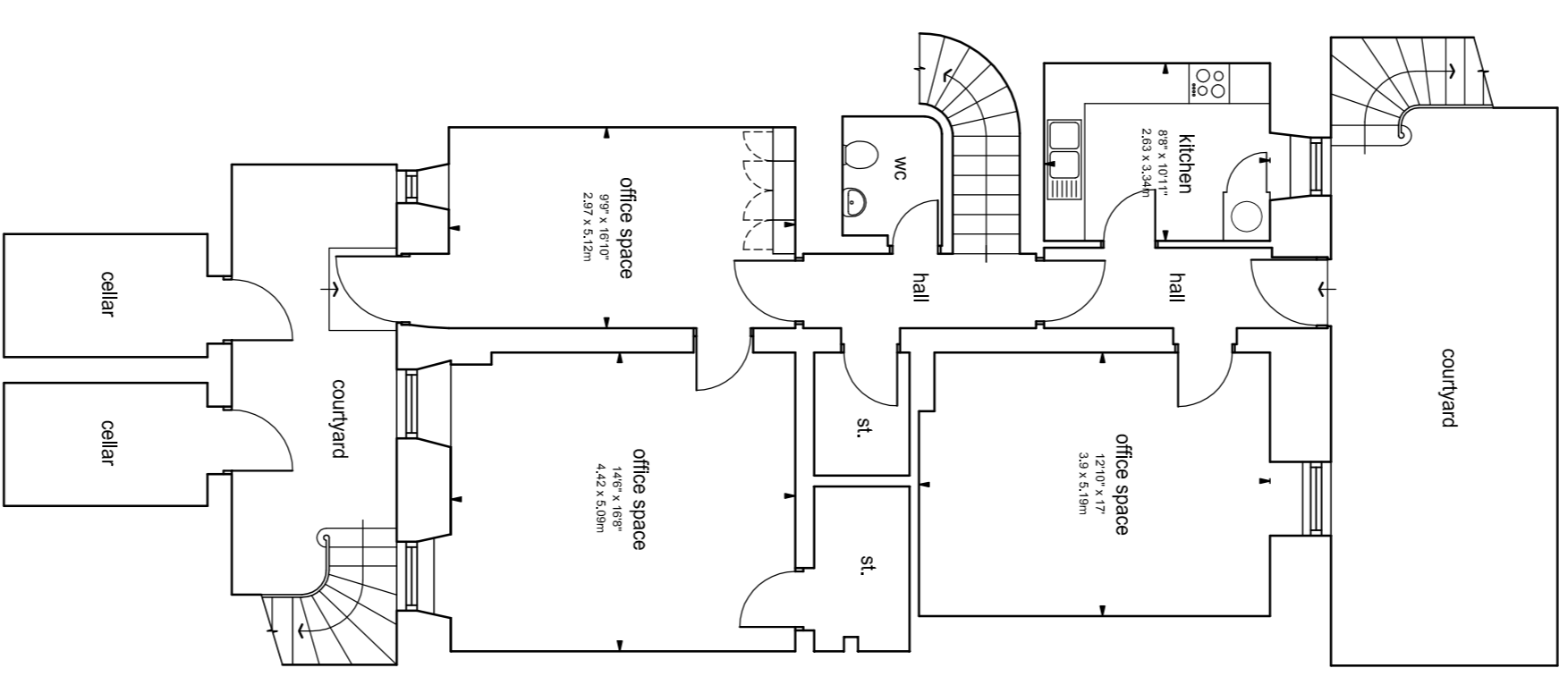
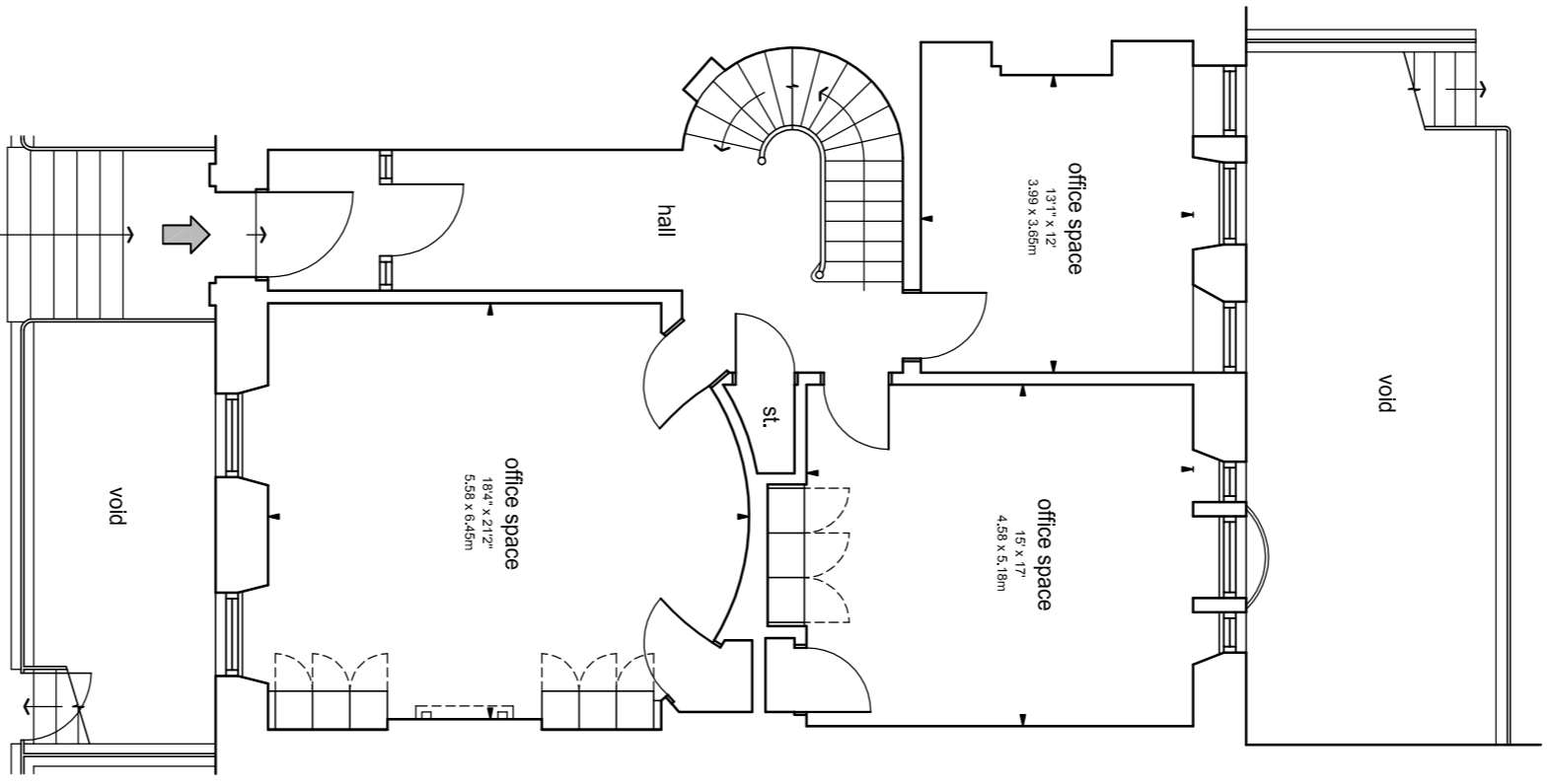


Areas			
GIA	Sq Ft	Sq M	
Basement	1066	99	
Ground Floor	1141	106	
First Floor	1141	106	
Second Floor	1152	107	
Third Floor	1044	97	
Total	5544	515	
N/A	Sq Ft	Sq M	
Basement	799	74.2	
Ground Floor	841	78.1	
First Floor	879	81.7	
Second Floor	906	84.2	
Third Floor	819	76.1	
Total	4244	394.3	
Exterior storage listed separately			
Cells			
GIA - 120m <sup>2</sup> (129sqft)			
N/A - 11m <sup>2</sup> (118sqft)			

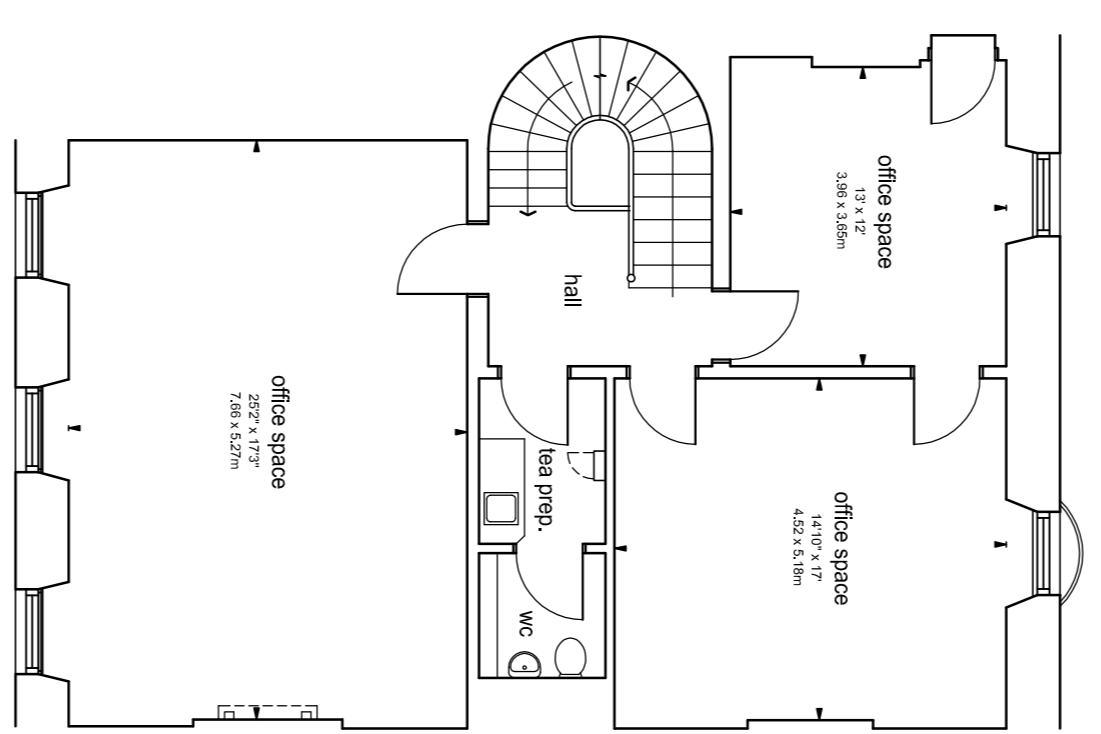
Internal area/measurements adhere to the International Property Measuring Standards (IPMS) the Royal Institute of Chartered Surveyors (RICS)



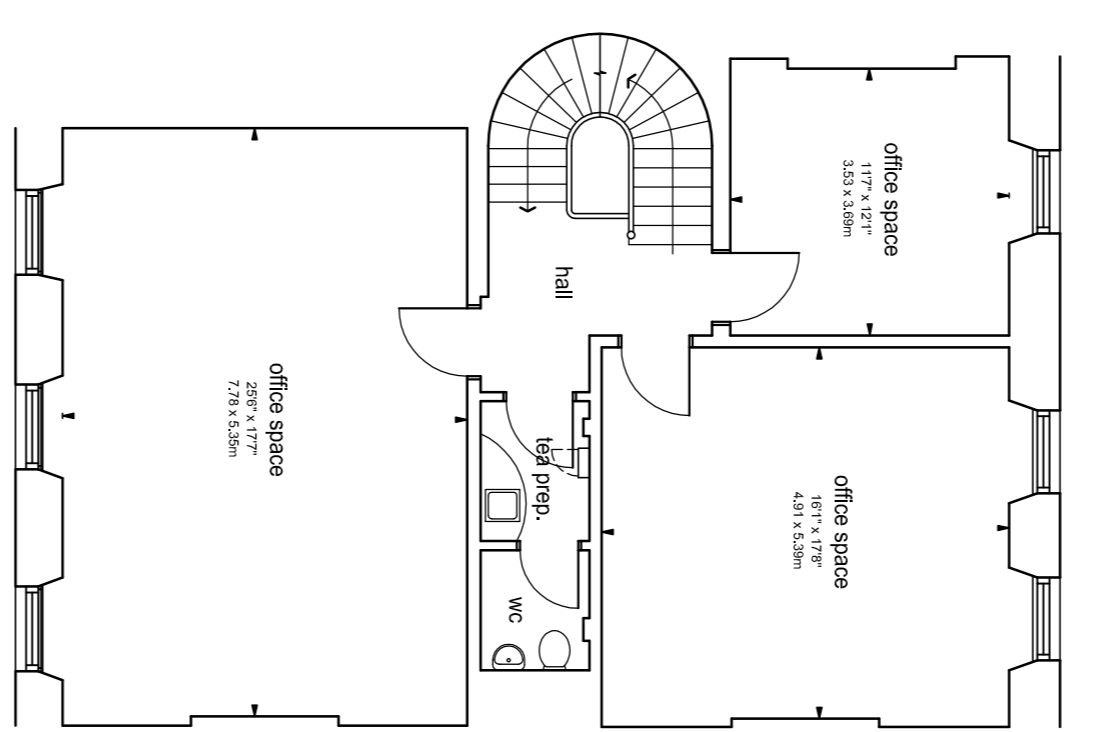
basement level plan 1:100 @A1



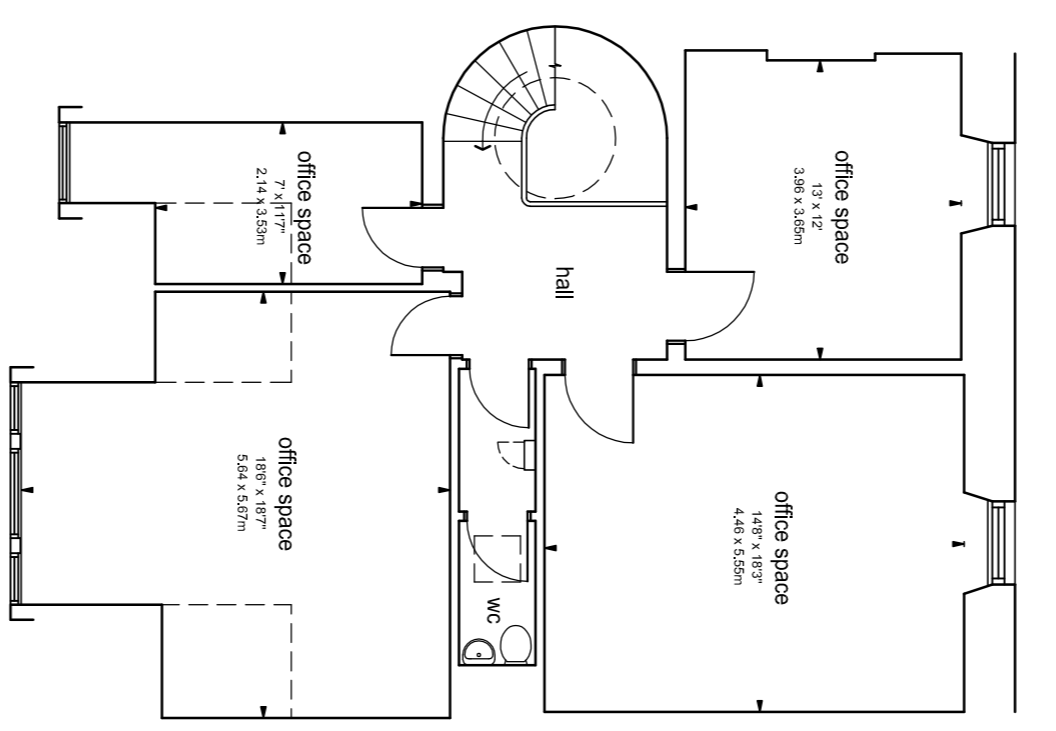
ground floor plan 1:100 @A1



first floor plan 1:100 @A1



second floor plan 1:100 @A1



third floor plan 1:100 @A1

Do not scale from drawing.  
© SquareFoot 2020.

**SquareFoot**  
GIA Plans  
25 Queen Street  
Edinburgh  
EH2 1JX  
for Scyllis

Ref: 22/09/23 Scale: 0/1  
93 George Street, Edinburgh EH2 3ES  
telephone - 0131 357 2527  
email - info@squarefootmedia.co.uk