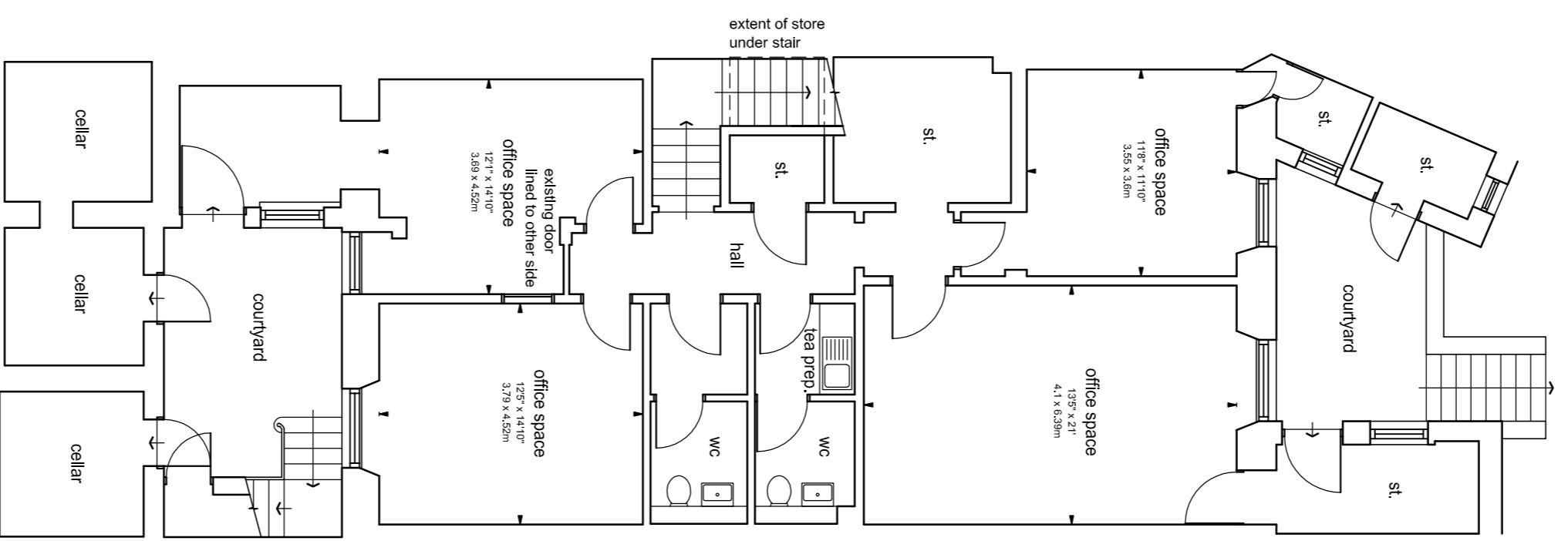


Areas			
GIA	Sq Ft	Sq M	
Basement	1432	133	
Ground Floor	1281	119	
First Floor	1270	118	
Second Floor	689	64	
Third Floor	1195	111	
Total	5967	545	
N/A	Sq Ft	Sq M	
Basement	1066	99	
Ground Floor	891	82.8	
First Floor	875	81.3	
Second Floor	409	38	
Third Floor	811	75.3	
Total	4052	378.4	

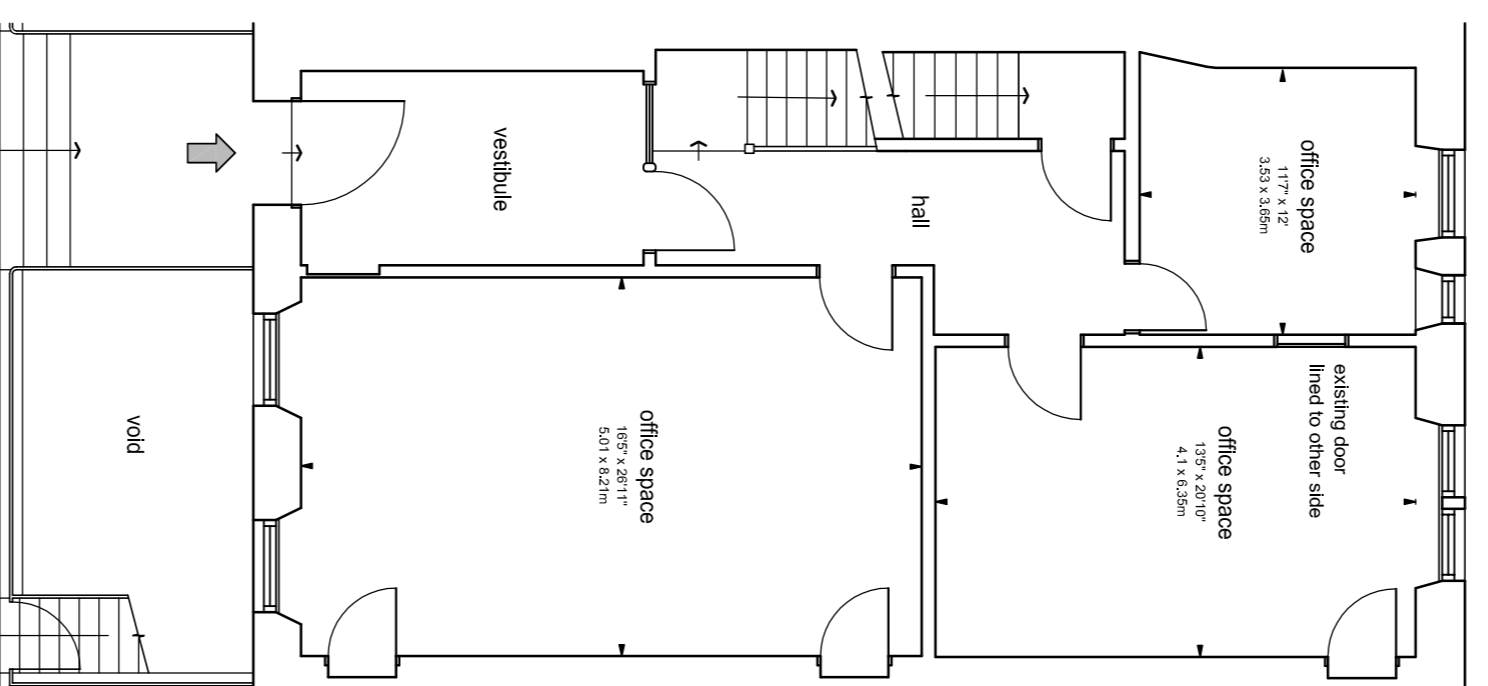
Exterior storage listed separately

Cellars  
 GIA - 21m<sup>2</sup> (226sqft)  
 N/A - 19.5m<sup>2</sup> (210sqft)  
 Store  
 N/A/GIA - 2.7m<sup>2</sup> (29sqft)

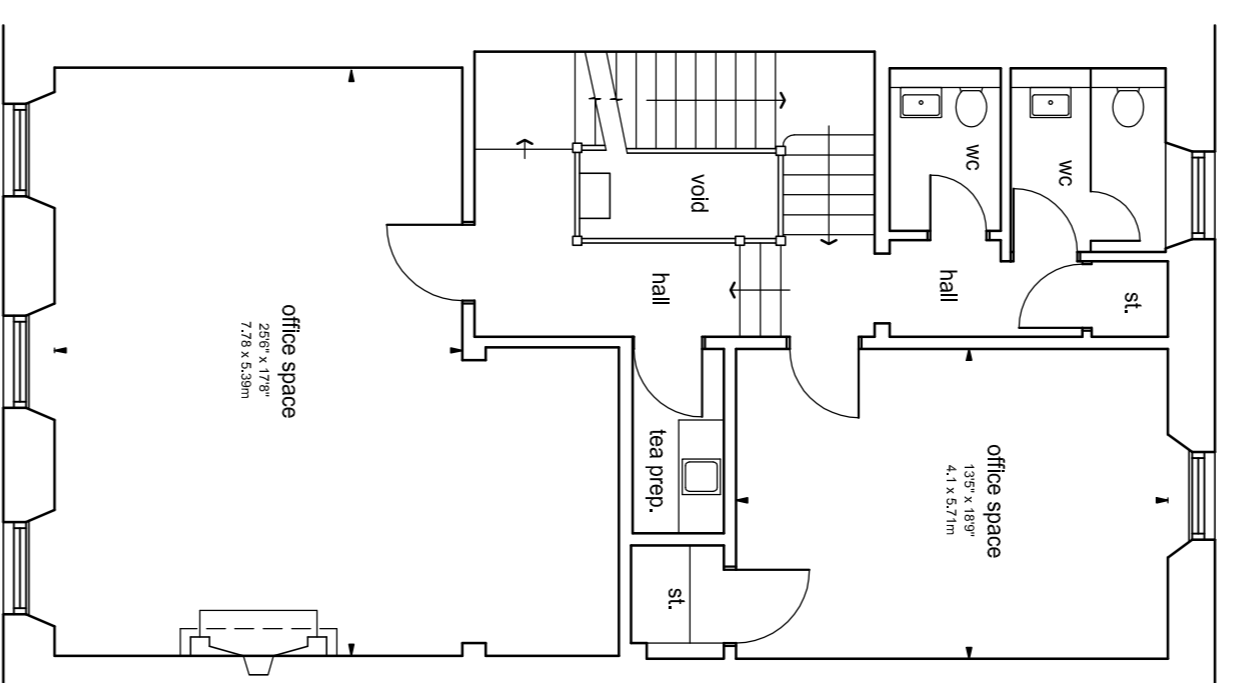
Internal area/measurements adhere to the International Property Measuring Standards (IPMS) as defined by the International Valuation Standards (IVS) of the Royal Institute of Chartered Surveyors (RICS)



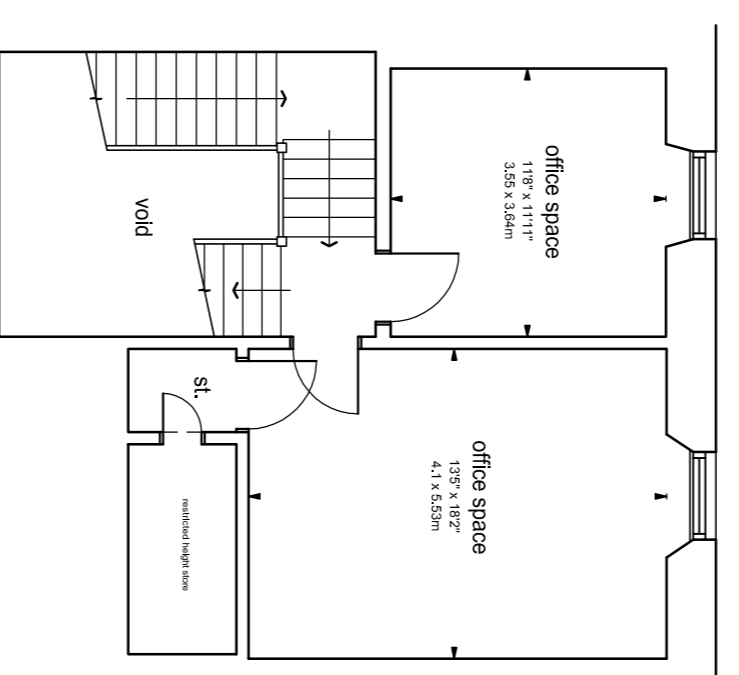
basement level plan 1:100 @A1



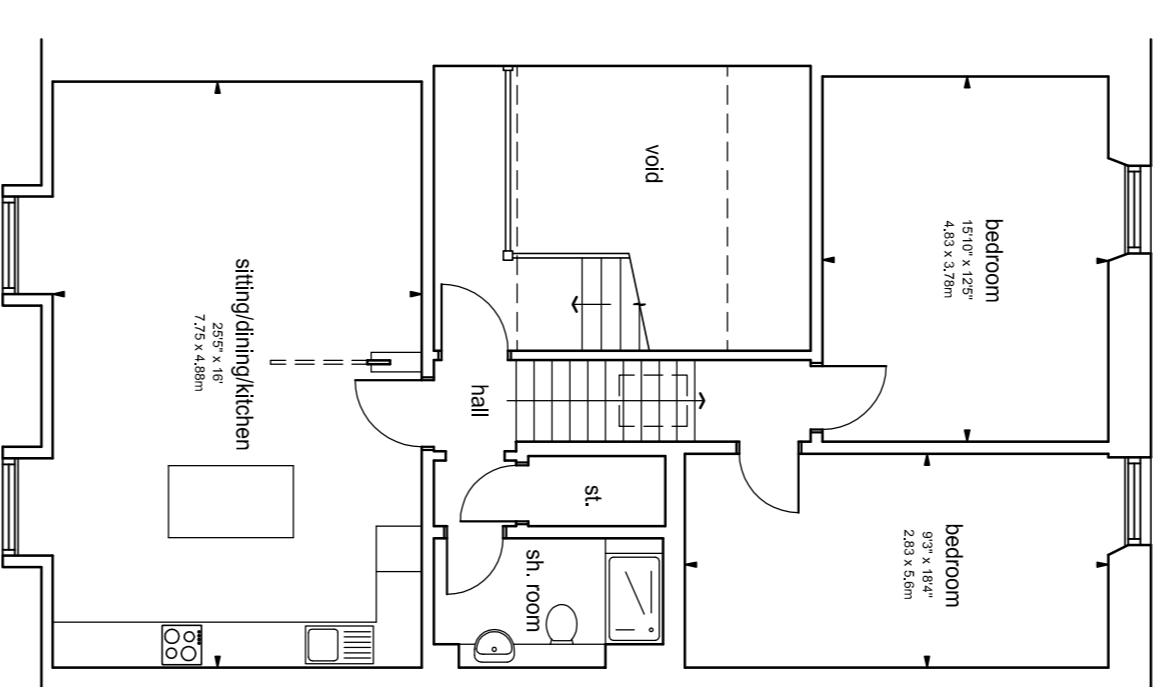
ground floor plan 1:100 @A1



first floor plan 1:100 @A1



second floor plan 1:100 @A1



third floor/flat plan 1:100 @A1

Do not scale from drawing.  
 © Squareroof 2020.

1/20

GIA Plans  
 6 Manor Place  
 Edinburgh  
 EH3 7DD  
 for Scyllis

Scale: 0/11

Date: 17/09/20



93 George Street, Edinburgh EH2 3ES  
 telephone - 0131 357 2527  
 email - info@squareroofmedia.co.uk