

Key

- Existing timber demountable glazed partition
- Walls to demolish
- Proposed new studwork
- Existing floor recessed power box
- Existing fire containment line

A 15-02-17 Existing fire containment line + tea wall note added FMS

REV.	DATE	DESCRIPTION	BY
------	------	-------------	----

AIA
• **Allan Joyce Architects**

Architects, Landscape & Interior Design

16-20 Bath Street, Nottingham NG1 1DF

T	0115 841 8418	E	design@allanjoycearchitects.co.uk
F	0115 950 7161	W	www.allanjoycearchitects.co.uk

CLIENT
Longhurst & Havelok Homes

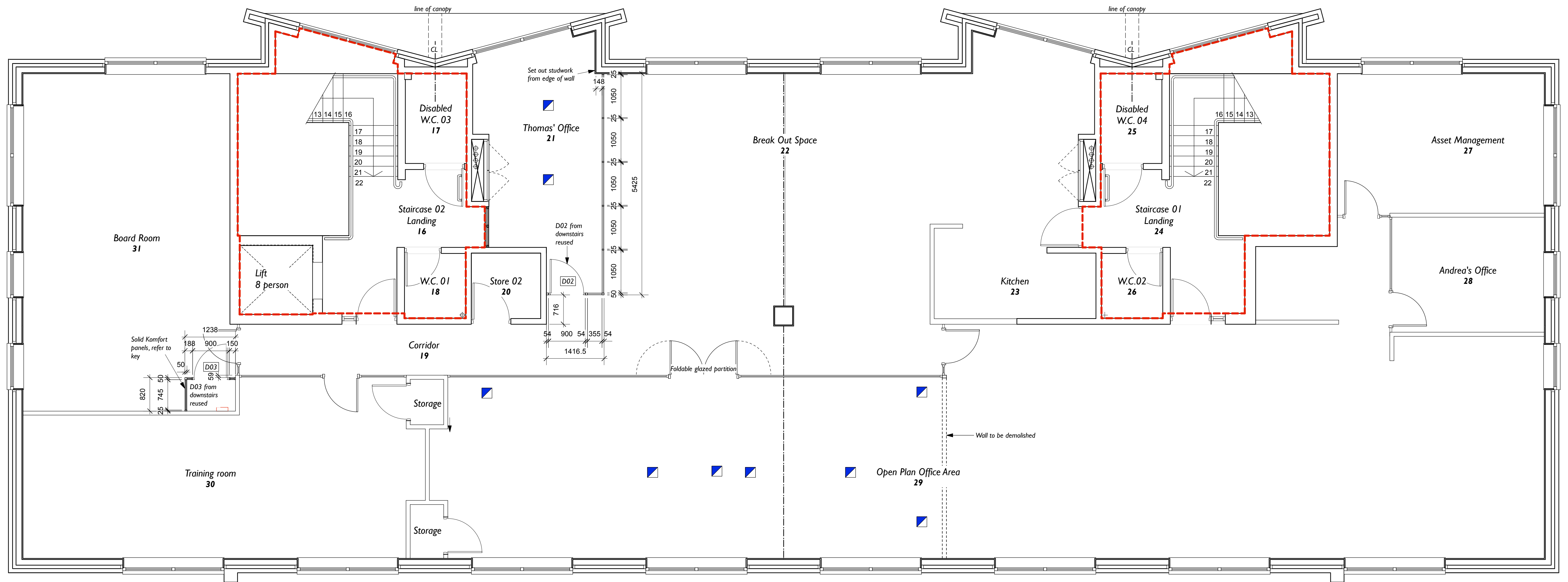
PROJECT
**Longhurst & Havelok Homes:
Nottingham Office**

DRAWING
Ground Floor Setting Out Plan

PROJECT NUMBER	SCALE	DATE
3251	1:50 @ A1	Dec-16

DRAWING NUMBER	REVISION	STATUS	BY
WD03	A	Bldg Reg	FMS

This drawing is copyright and remains the property of Allan Joyce Architects Ltd
Generally do not scale drawings. All dimensions to be checked on site.



Key

- Existing timber demountable glazed partition
- Walls to demolish
- Proposed (new) de-mountable glazed partition:
Komfort Office Environments Ltd. 600 series 50mm thick
metal framed double glazed (40dB) demountable partition
systems with integral blinds and standard height doorsets
- Komfort Office Environments Ltd. 600 series 50mm thick
metal framed demountable partition systems with solid panels
- Proposed new studwork
- Existing floor recessed power box
- Existing fire containment line

E	16-03-17	Walls to Thomas' office and Board Room Storage amended	FMS
D	01-03-17	Boxing for board room storage added	FMS
C	15-02-17	Existing fire containment line added	FMS
B	06-02-17	Glazed partition specification added	FMS
A	23-01-17	Dimension paper right of D02 amended	FMS

REV.	DATE	DESCRIPTION	BY
------	------	-------------	----

AIA
• **Allan Joyce Architects**

Architects, Landscape & Interior Design

16-20 Bath Street, Nottingham NG1 1DF

T 0115 841 8418 E design@allanjoycearchitects.co.uk
F 0115 950 7161 W www.allanjoycearchitects.co.uk

CLIENT
Longhurst & Havelok Homes

PROJECT
**Longhurst & Havelok Homes:
Nottingham Office**

DRAWING
First Floor Setting Out Plan

PROJECT NUMBER	SCALE	DATE
3251	1:50 @ A1	Dec-16

DRAWING NUMBER	REVISION	STATUS	BY
WD04	E	Bldg Reg	FMS

This drawing is copyright and remains the property of Allan Joyce Architects Ltd
Generally do not scale drawings. All dimensions to be checked on site.