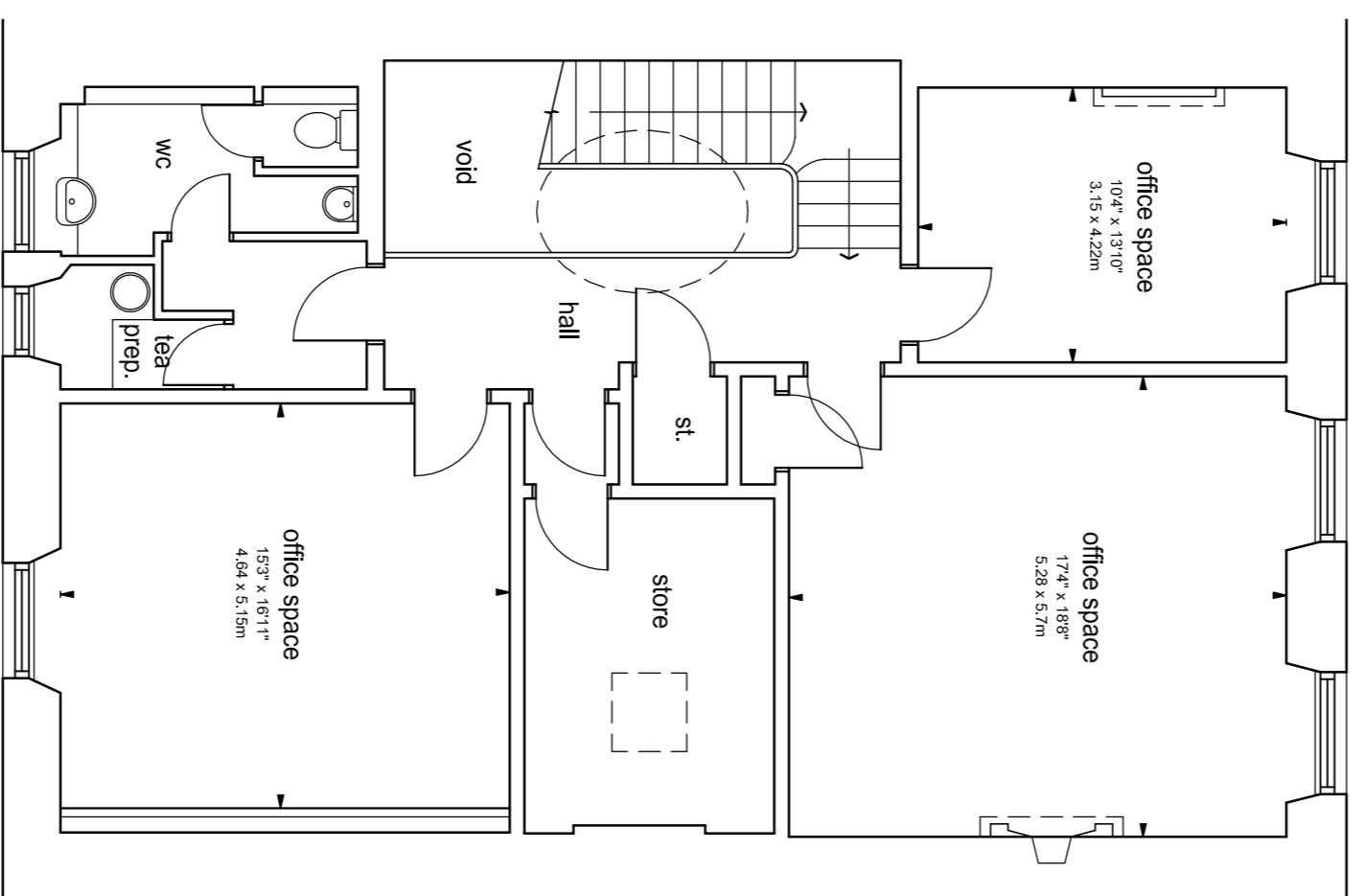
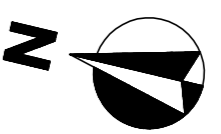


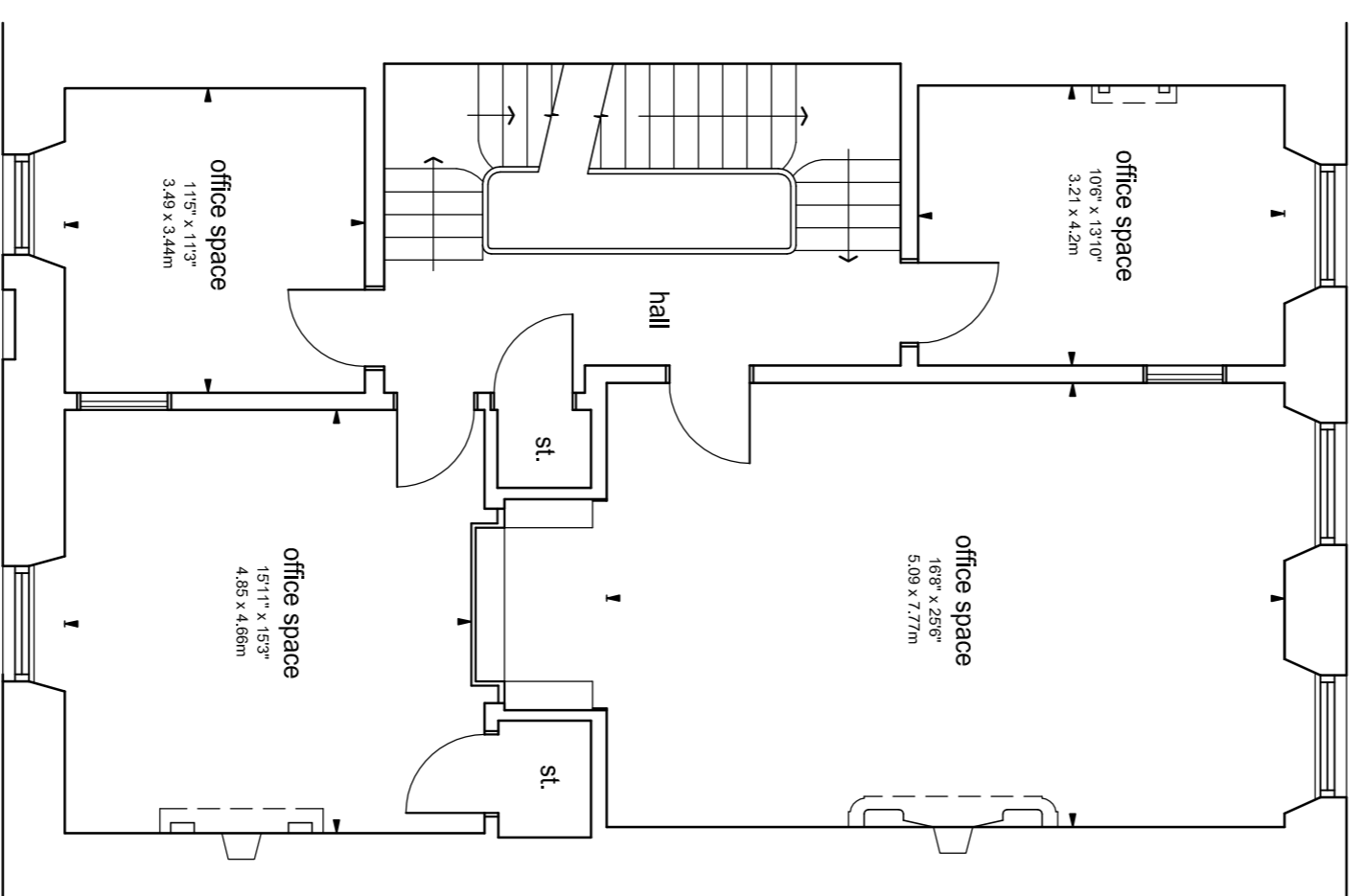
5 Woodside Terrace,  
Glasgow,  
G3 7UY



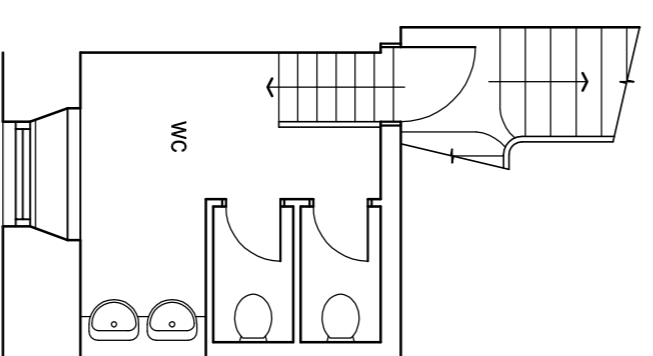
Gross internal area (approx)  
508 sq.m (5468 sq.ft)  
Net internal area (approx)  
355.1 sq.m (3822 sq.ft)  
External stores/cellars  
38.1 sq.m (410 sq.ft)  
Do not scale from drawing.  
© SquareFoot 2020.



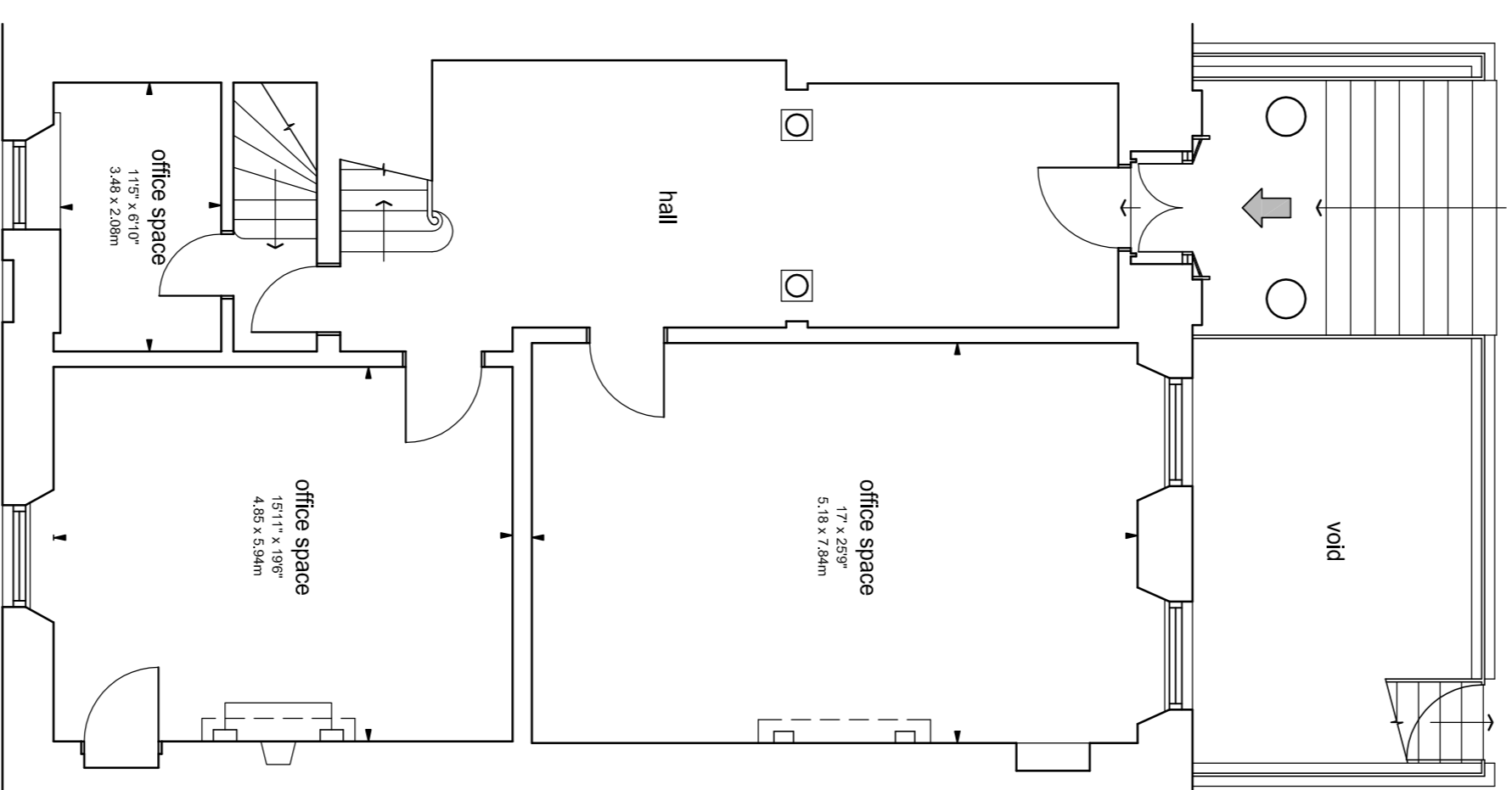
second floor plan



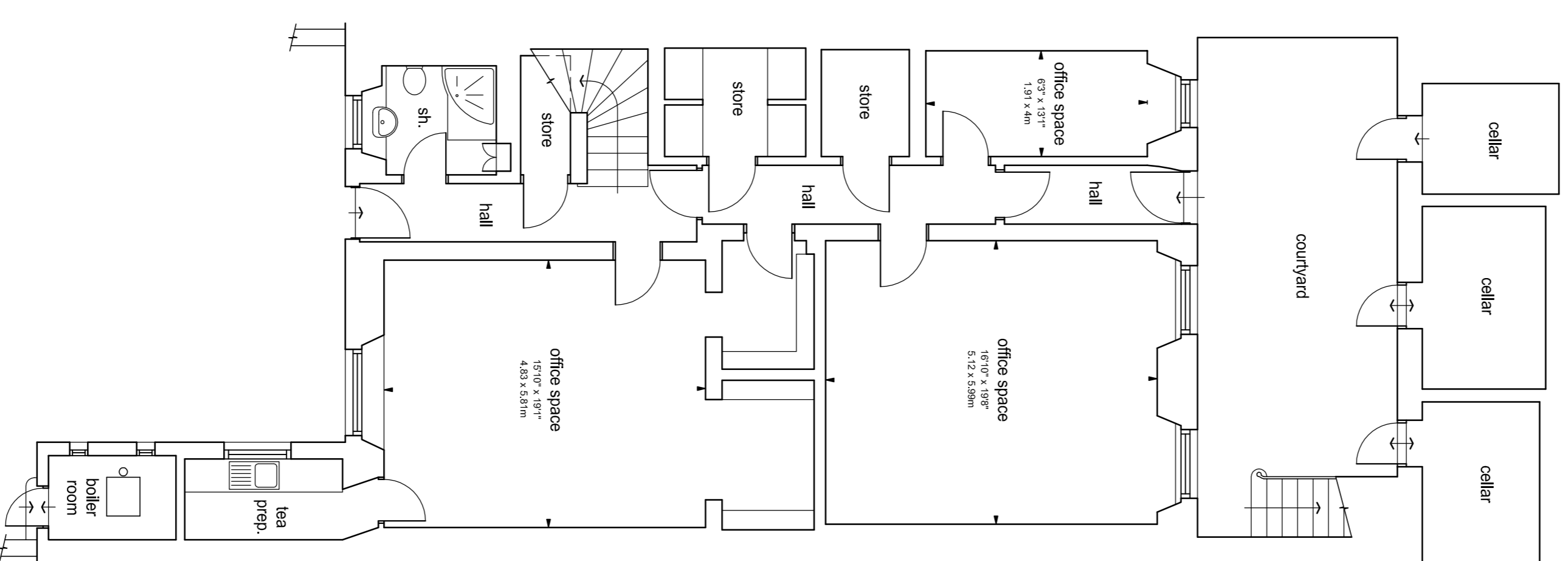
first floor plan



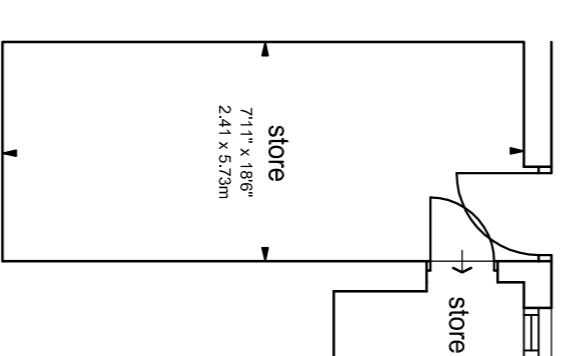
mezzanine



ground floor plan



basement level plan



remote store