



4th Floor, 145 St Vincent St Space Plan

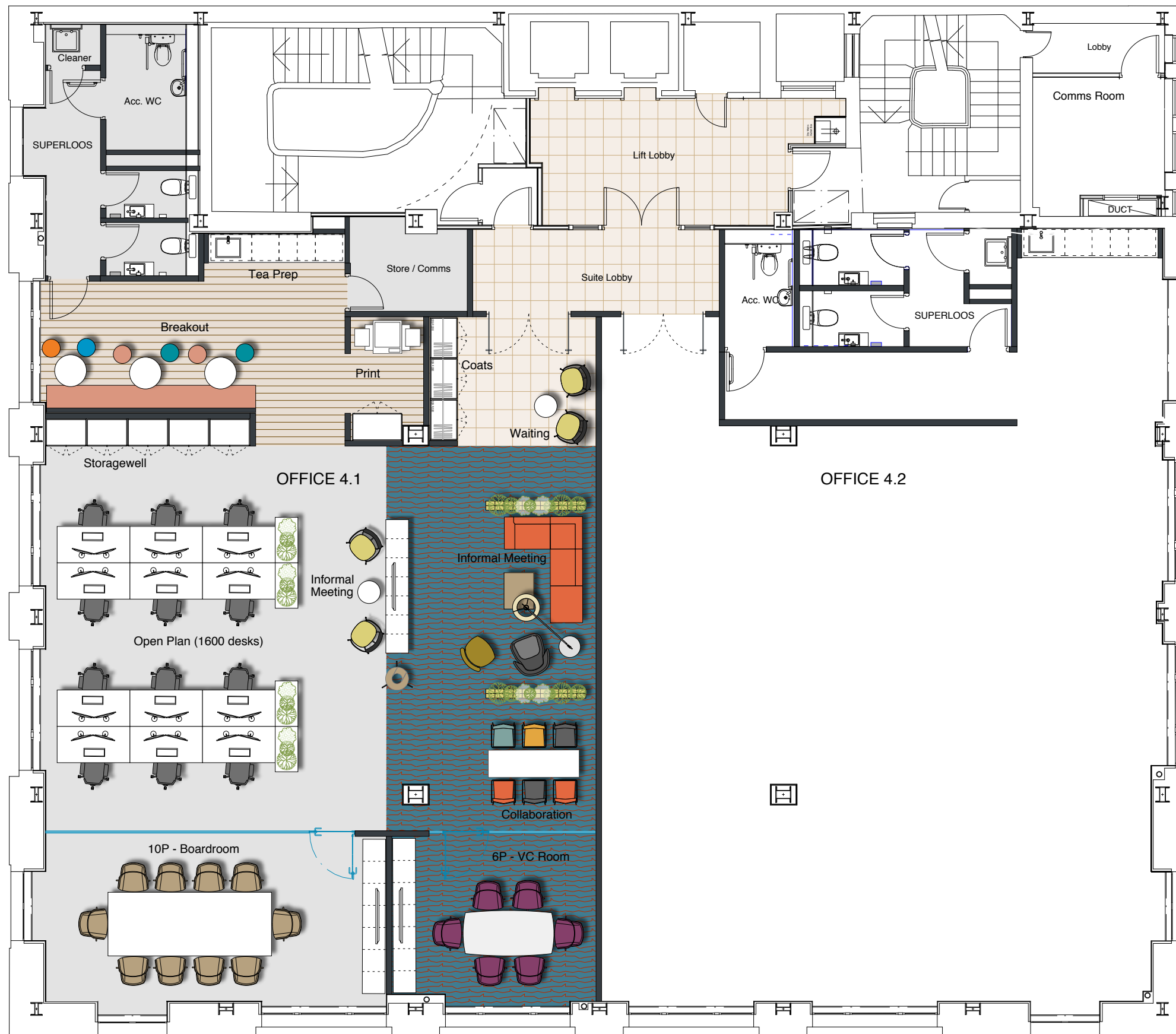


Office Suite 4.1

Space Plan

c2:concepts
Considered, creative.

St Vincent Street



OFFICE 4.1

N.I.A - APPROX 199 sqm / 2604 sq ft

DENSITY - 16.5 sqm per person

- 12 Workstations (1600mm x 800mm)
- 1 Waiting Area
- 2 Informal Meeting
- 1 Collaboration
- 1 6P VC Room
- 1 10P Boardroom
- 1 Tea Prep
- 1 Breakout Area
- 1 Print
- 1 Comms / Store
- 1 Storage Well
- 1 Coats

Office Suite 4.1

Space Plan

2

c2:concepts
Considered, creative.

www.c2concepts.co.uk



This document has been prepared by c2:concepts Ltd. for the sole use by our client or professional team within this specific project, in accordance with the legally binding professional consultancy appointment and terms of reference for this project. Copyright for the contents herein, in whole or part is owned by c2:concepts Ltd unless otherwise agreed and may not be copied, extracted or distributed to a third party without permission.

Glasgow office:

c2:concepts
Queens House
29 St Vincent Place
Glasgow
G1 2DT

0141 221 9229

London office:

c2:concepts
Henry Wood House
2 Riding House Street
London
W1W 7FA

0203 011 1984

c2:concepts
Considered, creative.