



24 SVP, Glasgow
Proposed Space Planning – 2nd Floor

Rev_A

07.03.23

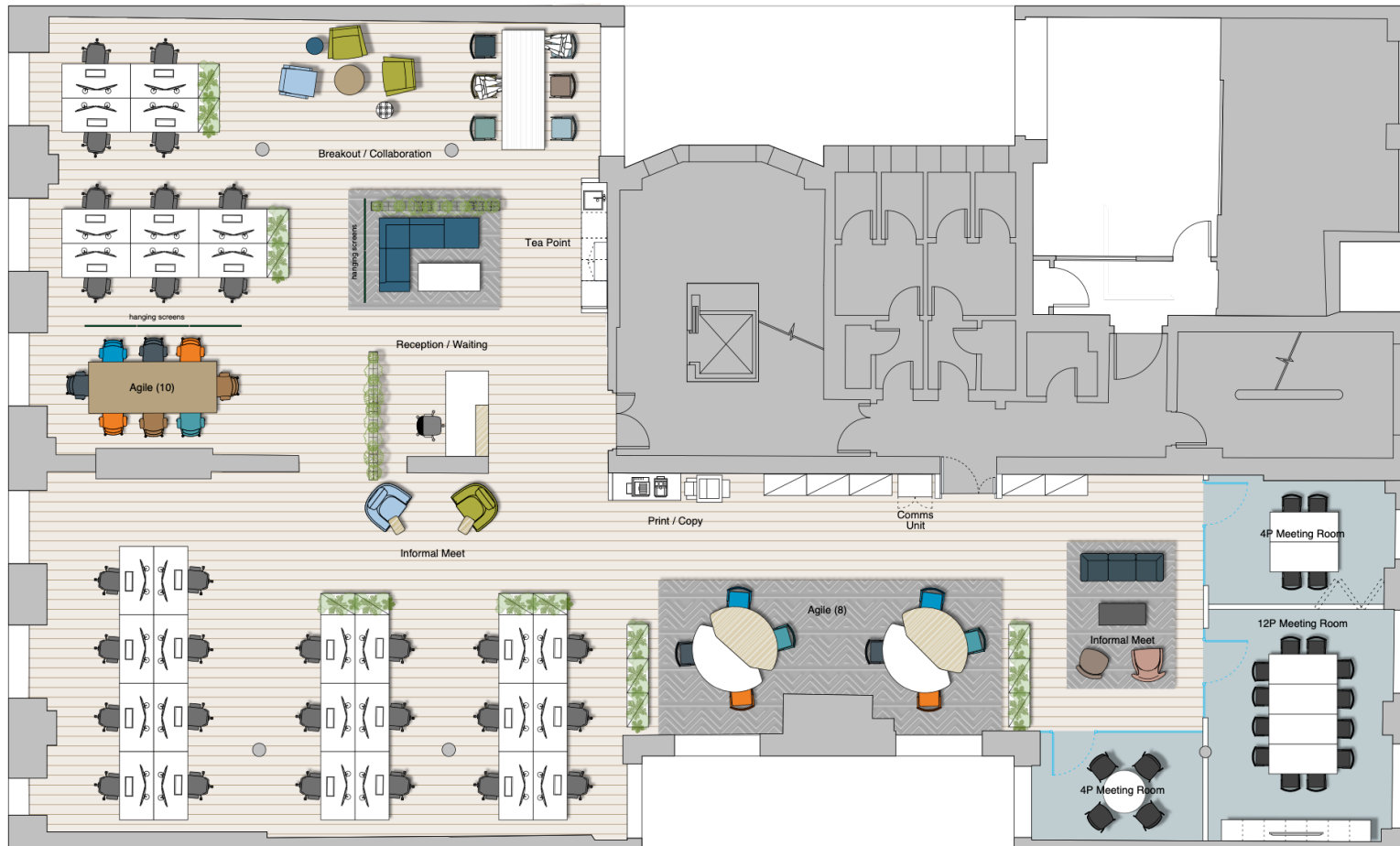
c2:concepts

Considered, creative.



2nd Floor
Proposed Layouts

c2:concepts
Considered, creative.



N.I.A: 380 sqm / 4,090 sqft

STANDARD WORKING -

30 x Workstation @ 1600 x 800mm

TOTAL: 30

AGILE SETTINGS (Noted on drawing)

18 x Agile Working

TOTAL: 18 no.

GRAND TOTAL OF PEOPLE: 48 no. at 1:8 sqm per person

SUPPORT FACILITIES

01 x Reception / Waiting

02 x 4P Meeting Room

01 x 12P Board Room

01 x 16P Board Room (1 x 4P & 1 x 12P)

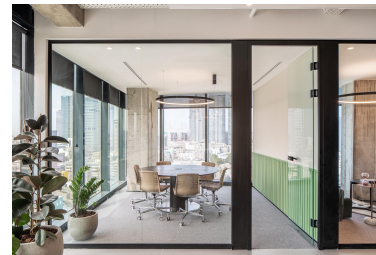
01 x Tea Point

01 x Breakout / Collaboration

02 x Informal Meet

01 x Print / Copy

01 x Comms Unit



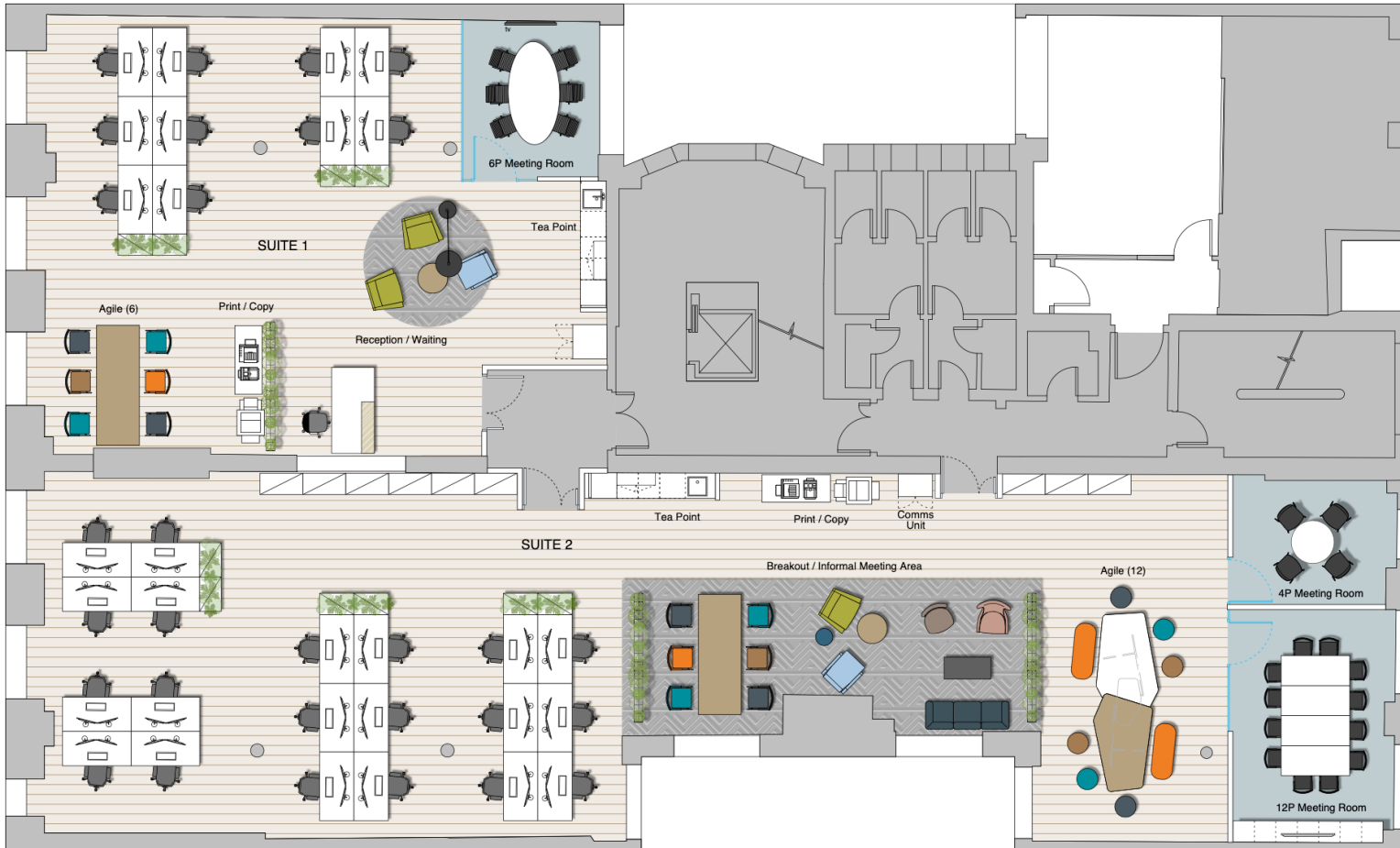
2nd Floor
Proposed Layout – Option 1

Drawing Rev_ A



c2:concepts
Considered, creative.

www.c2concepts.co.uk



N.I.A: 128 sqm / 1,378 sqft

SUITE 1

STANDARD WORKING -

10 x Workstation @ 1600 x 800mm

TOTAL: 10

AGILE SETTINGS (Noted on drawing)

06 x Agile Working

TOTAL: 06 no.

GRAND TOTAL OF PEOPLE: 16 no. at 1:8 sqm per person

SUPPORT FACILITIES

01 x Reception / Waiting

01 x 6P Meeting Room

01 x Tea Point

01 x Print / Copy

01 x Comms Unit

N.I.A: 244 sqm / 2,626 sqft

SUITE 2

STANDARD WORKING -

20 x Workstation @ 1600 x 800mm

TOTAL: 20

AGILE SETTINGS (Noted on drawing)

12 x Agile Working

TOTAL: 12 no.

GRAND TOTAL OF PEOPLE: 32 no. at 1:8 sqm per person

SUPPORT FACILITIES

01 x 4P Meeting Room

01 x 6P Meeting Room

01 x Breakout / Informal Meet Area

01 x Tea Point

01 x Print / Copy

01 x Comms Unit

3rd Floor

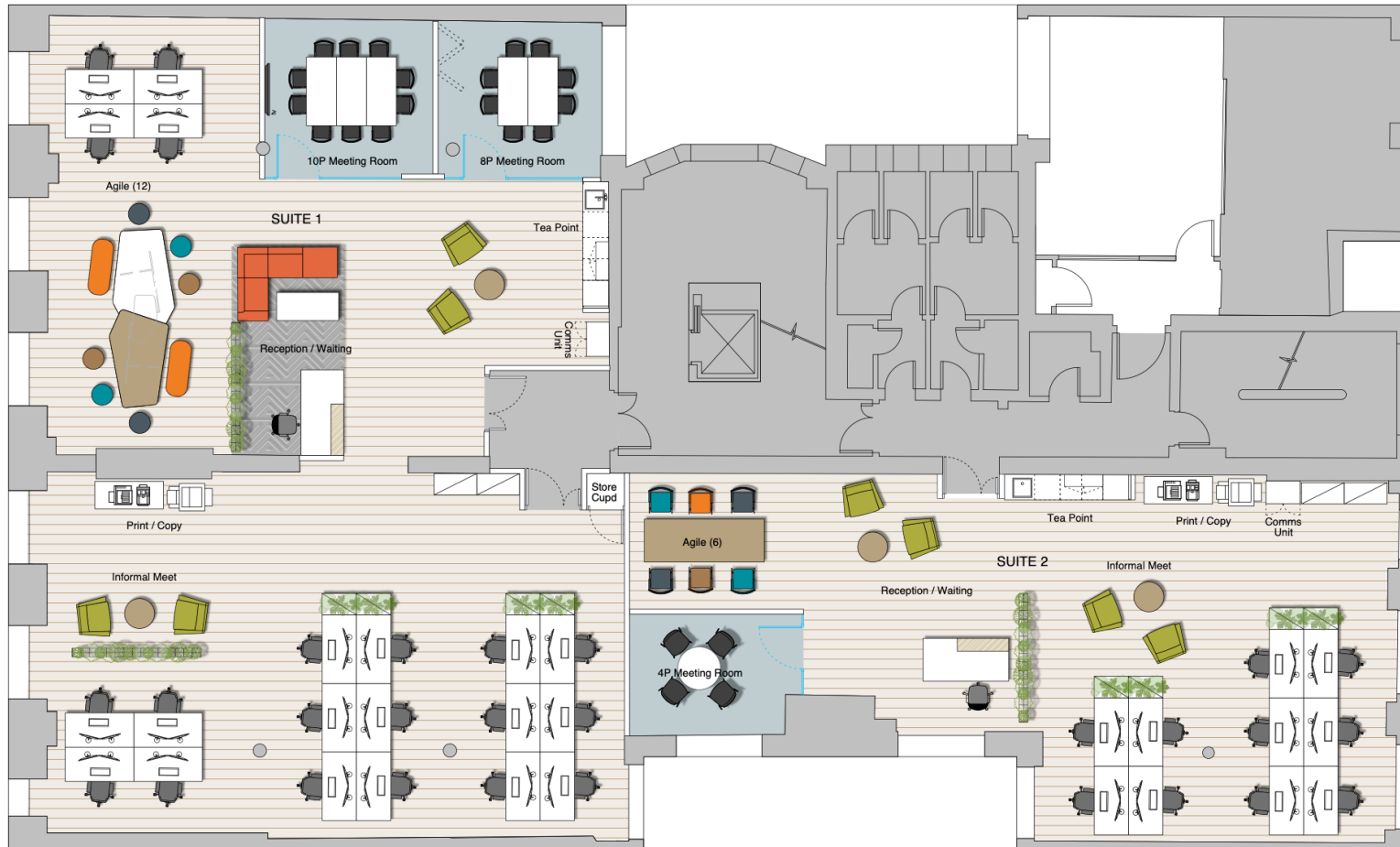
Proposed Layout – Option 2

Drawing Rev_A



c2:concepts
Considered, creative.

www.c2concepts.co.uk



N.I.A: 245 sqm / 2,637 sqft

SUITE 1

STANDARD WORKING -

20 x Workstation @ 1600 x 800mm

TOTAL: 20

AGILE SETTINGS (Noted on drawing)

12 x Agile Working

TOTAL: 12 no.

GRAND TOTAL OF PEOPLE: 32 no. at 1:8 sqm per person

SUPPORT FACILITIES

01 x Reception / Waiting

01 x 8P Meeting Room / 10P Meeting Room

or
01 x 18P Board Room

01 x Informal Meet

01 x Tea Point

01 x Print / Copy

01 x Comms Unit

01 x Store Cupboard

N.I.A: 127 sqm / 1,367 sqft

SUITE 2

STANDARD WORKING -

12 x Workstation @ 1600 x 800mm

TOTAL: 10

AGILE SETTINGS (Noted on drawing)

6 x Agile Working

TOTAL: 6 no.

GRAND TOTAL OF PEOPLE: 16 no. at 1:8 sqm per person

SUPPORT FACILITIES

01 x Reception / Waiting

01 x 4P Meeting Room

01 x Informal Meet

01 x Tea Point

01 x Print / Copy

01 x Comms Unit

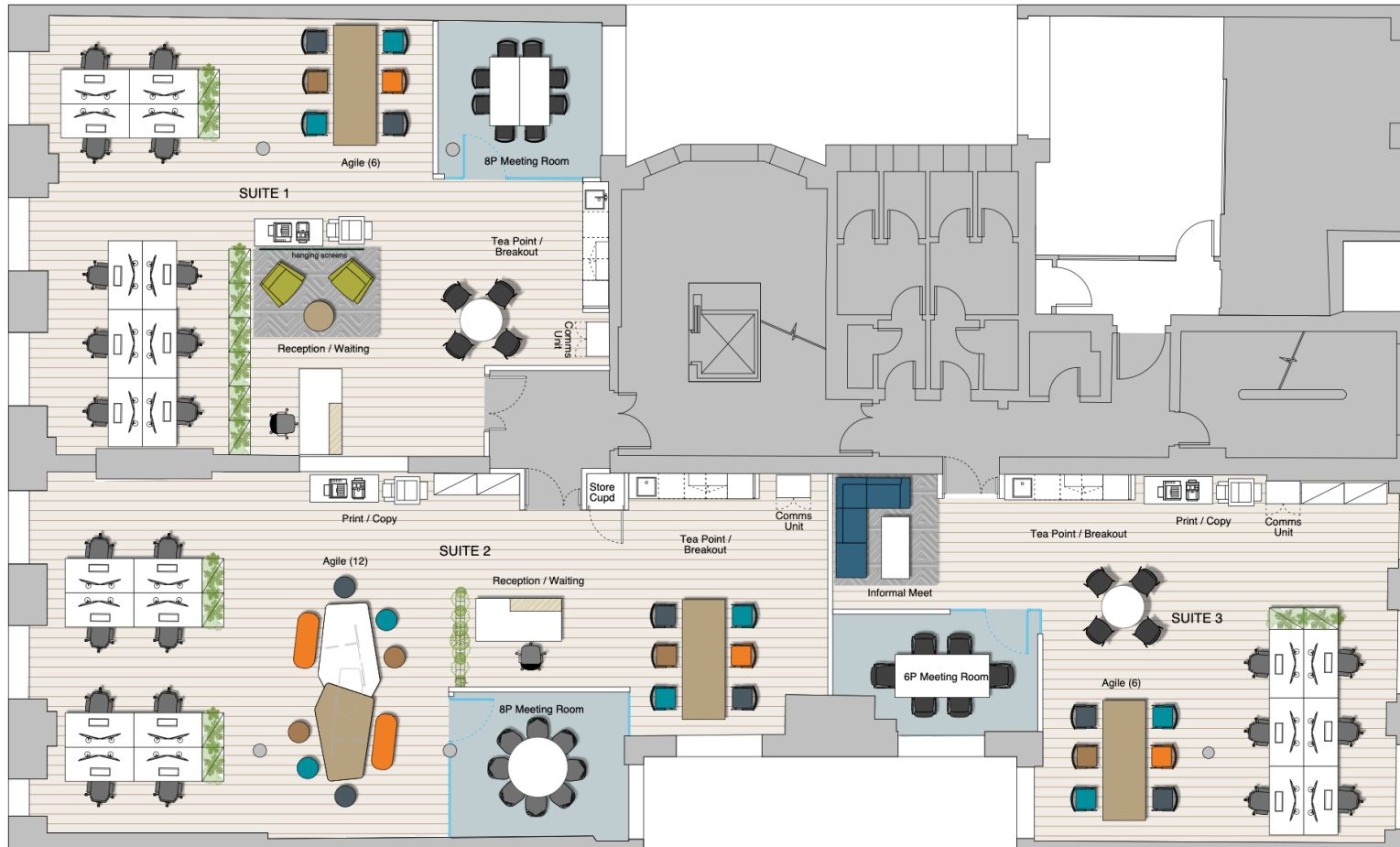
3rd Floor

Proposed Layout – Option 3



c2:concepts
Considered, creative.

www.c2concepts.co.uk



N.I.A: 128 sqm / 1,378 sqft

SUITE 1

STANDARD WORKING -

10 x Workstation @ 1600 x 800mm

TOTAL: 10

AGILE SETTINGS (Noted on drawing)

08 x Agile Working

TOTAL: 08 no.

GRAND TOTAL OF PEOPLE: 16 no. at 1:8 sqm per person

SUPPORT FACILITIES

01 x Reception / Waiting

01 x 8P Meeting Room

01 x Tea Point / Breakout

01 x Print / Copy

01 x Comms Unit

N.I.A: 127 sqm / 1,367 sqft

SUITE 2

STANDARD WORKING -

08 x Workstation @ 1600 x 800mm

TOTAL: 08

AGILE SETTINGS (Noted on drawing)

10 x Agile Working

TOTAL: 10 no.

GRAND TOTAL OF PEOPLE: 18 no. at 1:8 sqm per person

SUPPORT FACILITIES

01 x Reception / Waiting

01 x 8P Meeting Room

01 x Tea Point / Breakout

01 x Print / Copy

01 x Store Cupboard

01 x Comms Unit

N.I.A: 98 sqm / 1,055 sqft

SUITE 3

STANDARD WORKING -

06 x Workstation @ 1600 x 800mm

TOTAL: 06

AGILE SETTINGS (Noted on drawing)

06 x Agile Working

TOTAL: 06 no.

GRAND TOTAL OF PEOPLE: 12 no. at 1:8 sqm per person

SUPPORT FACILITIES

01 x Waiting

01 x 6P Meeting Room

01 x Tea Point / Breakout

01 x Print / Copy

01 x Comms Unit

3rd Floor

Proposed Layout – Option 4



c2:concepts
Considered, creative.

www.c2concepts.co.uk



This document has been prepared by c2:concepts Ltd. for the sole use by our client or professional team within this specific project, in accordance with the legally binding professional consultancy appointment and terms of reference for this project. Copyright for the contents herein, in whole or part is owned by c2:concepts Ltd unless otherwise agreed and may not be copied, extracted or distributed to a third party without permission.

Glasgow office:

c2:concepts
Queens House
29 St Vincent Place
Glasgow
G1 2DT

0141 221 9229

London office:

c2:concepts
Henry Wood House
2 Riding House Street
London
W1W 7FA

0203 011 1984

c2:concepts

Considered, creative.