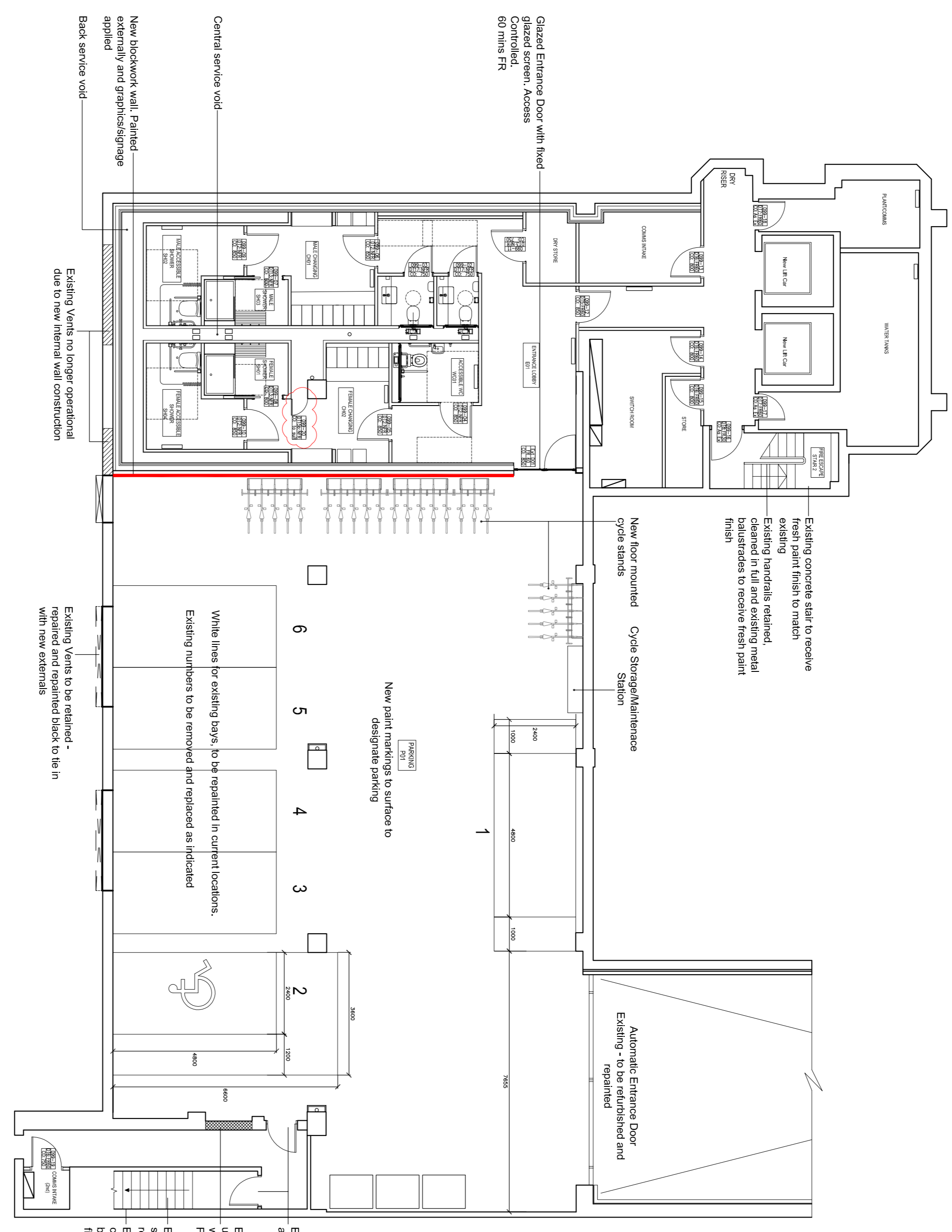


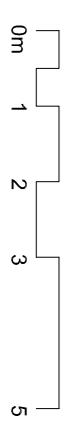
Ambassador Group

- NOTES**
- Refer to (21) series drawings for details of external wall types
 - Refer to (22) series drawings for details of internal wall types
 - Refer to (23) and (33) series drawings for details of floor slab and floor construction/finishes
 - Refer to (31) series drawings for details of external glazing and doors
 - Refer to (32) series drawings for details of internal doors
 - Refer to (71) series drawings for details of WC areas
 - Refer to (FR) series drawings for details of fire ratings to partitions

To be read in conjunction with M&E Engineers' Information external works and works to floor slabs.



- Existing concrete stair to receive fresh paint finish to match existing handrails related; metal balustrades to receive fresh paint finish
- New floor rounded Cycle Storage/Maintenance Station
- Automatic Entrance Door Existing - to be refurbished and repaired
- Existing Doors - to be refurbished and repaired
- Existing Door opening to be blocked up and receive a skim coat to be in with surrounding wall surface. Full wall to receive a paint finish.
- Existing stair to be fully cleaned, surfaces treated with localised repair and existing handrails related; metal balustrades to receive fresh paint finish
- Existing Vents to be retained - repaired and repainted black to tie in with new externals
- White lines for existing bays to be repainted in current locations. Existing numbers to be removed and replaced as indicated
- New paint markings to surface to designate parking
- Central service void
- New blockwork wall, Painted externally and graphics/signage applied
- Back service void
- Existing Vents no longer operational due to new internal wall construction
- Glazed Entrance Door with fixed glazed screen, Access Controlled, 80 mins FR



REV.	REASON FOR ISSUE	DATE
A	Structural & door opening changed to box with diagonal reinforcement	11/04/17
B	Layout updated to reflect fire rated doors required for Separation & door opening changed to box with diagonal reinforcement	24/04/18
C	WC and Shower arrangement updated to suit changes	30/04/18
D	Service zones introduced	10/05/18
E	Clarify depth of art wall (ignores) reviewed for drainage channel	30/07/18
F	WC arrangements updated	10/08/18
G	Stage 4 Issue	September 18
H	Contact Issue	June 19
I	Layout updated following findings of designer CCTV survey	11/09/19
J	Extent of service void updated	08/10/19
K	Rear door added	10/07/20
L	Dimensions/Notes for parking bay vehicle box added	06/07/20

PROJECT	TITLE
Stallan-Brand	Proposed Basement Level Plan
80 Nicholson Street Glasgow G5 9ER	
Phone: 0141 258 5015 Email: info@stallanbrand.com Website: www.stallanbrand.com	

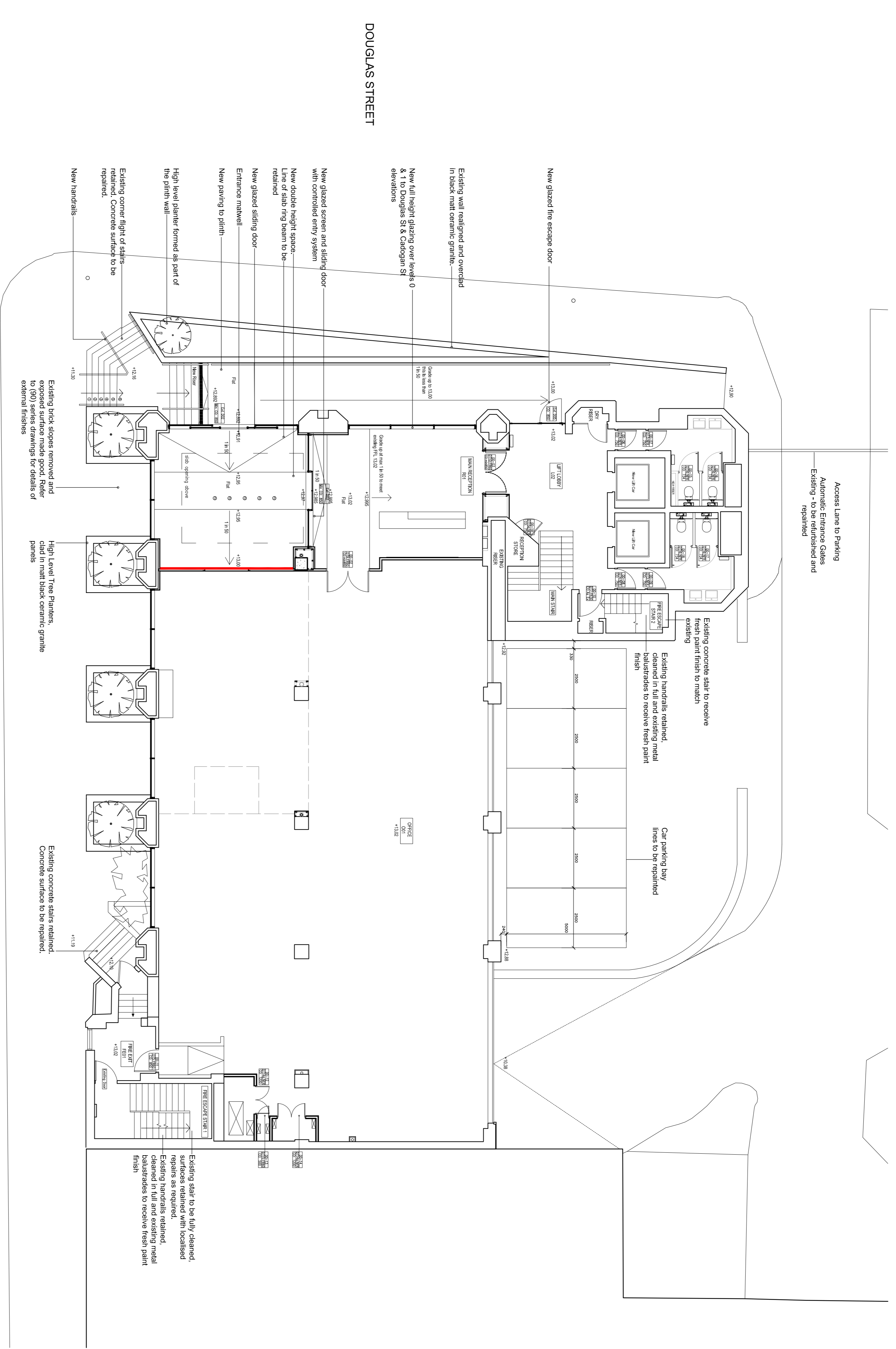
STATUS	DATE	DRAWN BY	CHECKED BY	SCALE @ A1	PROJECT NUMBER
Construction	March 2018	SF	-	1:100	1049

DRAWING NUMBER	REVISION
(GA)099	L

DO NOT SCALE FROM THIS DRAWING.
 THIS DRAWING IS THE PROPERTY OF STALLAN-BRAND ARCHITECTURAL DESIGN LTD.
 ALL DIMENSIONS ARE SHOWN IN METRES.
 THIS DRAWING REMAINS THE COPYRIGHT OF
 STALLAN-BRAND ARCHITECTURAL DESIGN LTD

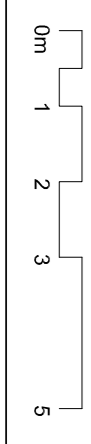
CLIENT
 Ambassador Group

NOTES
 Refer to (21) series drawings for details of external wall types
 Refer to (22) series drawings for details of internal wall types
 Refer to (23) and (33) series drawings for details of floor slabs and floor construction/finishes
 Refer to (31) series drawings for details of external glazing and doors
 Refer to (32) series drawings for details of internal doors
 Refer to (71) series drawings for details of WC areas
 Refer to (72) series drawings for details of fire ratings to partitions
 Refer to (FR) series drawings for details of fire ratings to partitions
 To be read in conjunction with M&E Engineers' Information
 Refer to Structural Engineer's Information for further details of glazed screens, external works and works to floor slabs.



CADOGAN STREET

DOUGLAS STREET



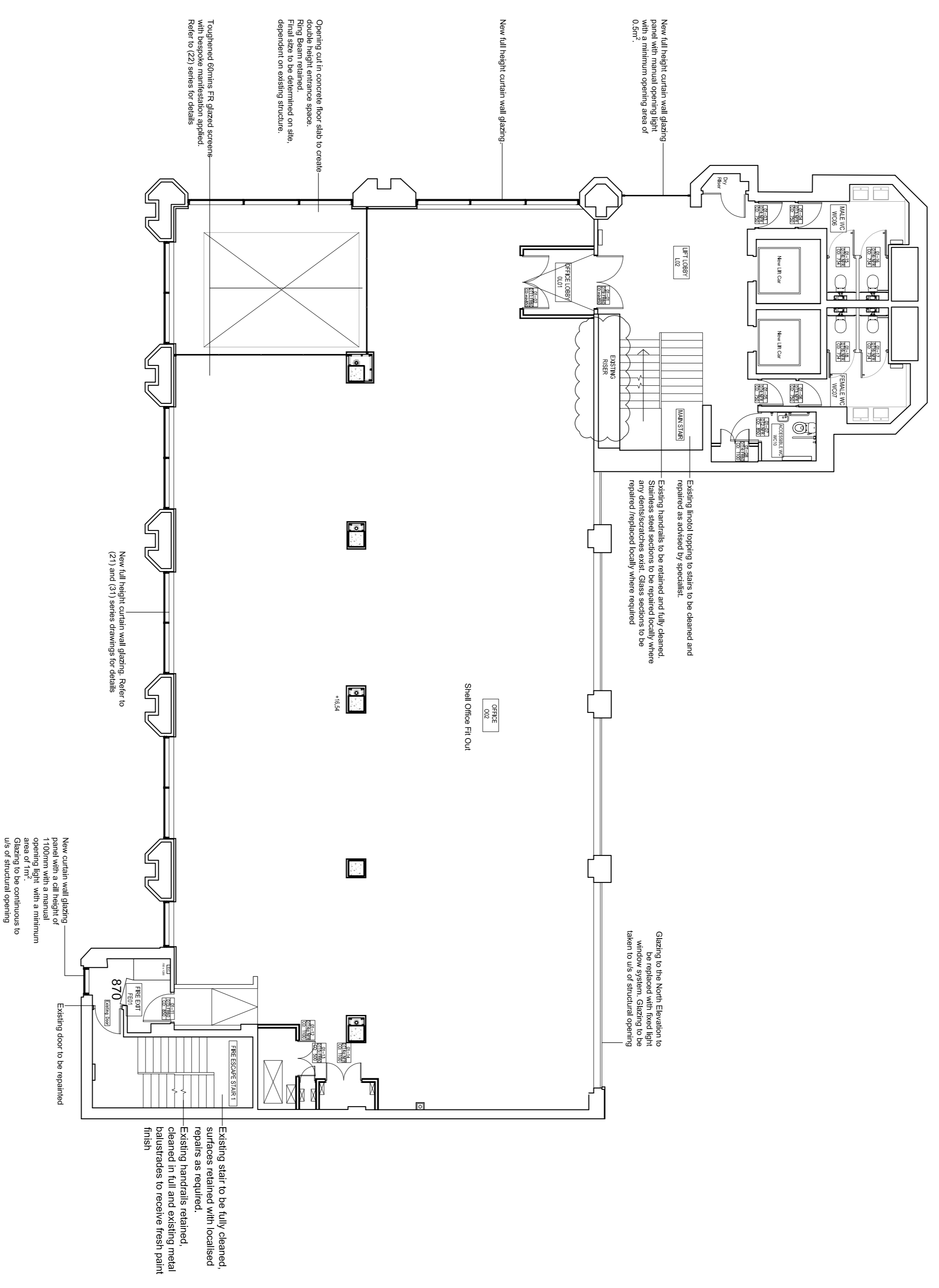
PROJECT		Hanover House Refurbishment	
PROJECT		Glasgow	
PROJECT		80 Nicholson Street	
PROJECT		GS 9ER	
PROJECT		Phone: 0141 258 5015	
PROJECT		Email: info@stallanbrand.com	
PROJECT		Website: www.stallanbrand.com	
PROJECT		PROJECT NUMBER	
PROJECT		1049	
PROJECT		SCALE @ A1	
PROJECT		1:100	
PROJECT		DATE	
PROJECT		March 2018	
PROJECT		STATUS	
PROJECT		Contract	
PROJECT		(GA) 100	
PROJECT		RESPONSIBILITY	
PROJECT		J	
PROJECT		DRAWING NUMBER	
PROJECT		(GA) 100	
PROJECT		DATE	
PROJECT		March 2018	
PROJECT		DRAWN BY	
PROJECT		SF	
PROJECT		CHECKED BY	
PROJECT		-	
PROJECT		PROJECT NUMBER	
PROJECT		1049	
PROJECT		SCALE @ A1	
PROJECT		1:100	
PROJECT		DATE	
PROJECT		March 2018	
PROJECT		STATUS	
PROJECT		Contract	
PROJECT		(GA) 100	
PROJECT		RESPONSIBILITY	
PROJECT		J	
PROJECT		DRAWING NUMBER	
PROJECT		(GA) 100	
PROJECT		DATE	
PROJECT		March 2018	
PROJECT		DRAWN BY	
PROJECT		SF	
PROJECT		CHECKED BY	
PROJECT		-	
PROJECT		PROJECT NUMBER	
PROJECT		1049	
PROJECT		SCALE @ A1	
PROJECT		1:100	
PROJECT		DATE	
PROJECT		March 2018	
PROJECT		STATUS	
PROJECT		Contract	
PROJECT		(GA) 100	
PROJECT		RESPONSIBILITY	
PROJECT		J	
PROJECT		DRAWING NUMBER	
PROJECT		(GA) 100	
PROJECT		DATE	
PROJECT		March 2018	
PROJECT		DRAWN BY	
PROJECT		SF	
PROJECT		CHECKED BY	
PROJECT		-	
PROJECT		PROJECT NUMBER	
PROJECT		1049	
PROJECT		SCALE @ A1	
PROJECT		1:100	
PROJECT		DATE	
PROJECT		March 2018	
PROJECT		STATUS	
PROJECT		Contract	
PROJECT		(GA) 100	
PROJECT		RESPONSIBILITY	
PROJECT		J	
PROJECT		DRAWING NUMBER	
PROJECT		(GA) 100	
PROJECT		DATE	
PROJECT		March 2018	
PROJECT		DRAWN BY	
PROJECT		SF	
PROJECT		CHECKED BY	
PROJECT		-	
PROJECT		PROJECT NUMBER	
PROJECT		1049	
PROJECT		SCALE @ A1	
PROJECT		1:100	
PROJECT		DATE	
PROJECT		March 2018	
PROJECT		STATUS	
PROJECT		Contract	
PROJECT		(GA) 100	
PROJECT		RESPONSIBILITY	
PROJECT		J	
PROJECT		DRAWING NUMBER	
PROJECT		(GA) 100	
PROJECT		DATE	
PROJECT		March 2018	
PROJECT		DRAWN BY	
PROJECT		SF	
PROJECT		CHECKED BY	
PROJECT		-	
PROJECT		PROJECT NUMBER	
PROJECT		1049	
PROJECT		SCALE @ A1	
PROJECT		1:100	
PROJECT		DATE	
PROJECT		March 2018	
PROJECT		STATUS	
PROJECT		Contract	
PROJECT		(GA) 100	
PROJECT		RESPONSIBILITY	
PROJECT		J	
PROJECT		DRAWING NUMBER	
PROJECT		(GA) 100	
PROJECT		DATE	
PROJECT		March 2018	
PROJECT		DRAWN BY	
PROJECT		SF	
PROJECT		CHECKED BY	
PROJECT		-	
PROJECT		PROJECT NUMBER	
PROJECT		1049	
PROJECT		SCALE @ A1	
PROJECT		1:100	
PROJECT		DATE	
PROJECT		March 2018	
PROJECT		STATUS	
PROJECT		Contract	
PROJECT		(GA) 100	
PROJECT		RESPONSIBILITY	
PROJECT		J	
PROJECT		DRAWING NUMBER	
PROJECT		(GA) 100	
PROJECT		DATE	
PROJECT		March 2018	
PROJECT		DRAWN BY	
PROJECT		SF	
PROJECT		CHECKED BY	
PROJECT		-	
PROJECT		PROJECT NUMBER	
PROJECT		1049	
PROJECT		SCALE @ A1	
PROJECT		1:100	
PROJECT		DATE	
PROJECT		March 2018	
PROJECT		STATUS	
PROJECT		Contract	
PROJECT		(GA) 100	
PROJECT		RESPONSIBILITY	
PROJECT		J	
PROJECT		DRAWING NUMBER	
PROJECT		(GA) 100	
PROJECT		DATE	
PROJECT		March 2018	
PROJECT		DRAWN BY	
PROJECT		SF	
PROJECT		CHECKED BY	
PROJECT		-	
PROJECT		PROJECT NUMBER	
PROJECT		1049	
PROJECT		SCALE @ A1	
PROJECT		1:100	
PROJECT		DATE	
PROJECT		March 2018	
PROJECT		STATUS	
PROJECT		Contract	
PROJECT		(GA) 100	
PROJECT		RESPONSIBILITY	
PROJECT		J	
PROJECT		DRAWING NUMBER	
PROJECT		(GA) 100	
PROJECT		DATE	
PROJECT		March 2018	
PROJECT		DRAWN BY	
PROJECT		SF	
PROJECT		CHECKED BY	
PROJECT		-	
PROJECT		PROJECT NUMBER	
PROJECT		1049	
PROJECT		SCALE @ A1	
PROJECT		1:100	
PROJECT		DATE	
PROJECT		March 2018	
PROJECT		STATUS	
PROJECT		Contract	
PROJECT		(GA) 100	
PROJECT		RESPONSIBILITY	
PROJECT		J	
PROJECT		DRAWING NUMBER	
PROJECT		(GA) 100	
PROJECT		DATE	
PROJECT		March 2018	
PROJECT		DRAWN BY	
PROJECT		SF	
PROJECT		CHECKED BY	
PROJECT		-	
PROJECT		PROJECT NUMBER	
PROJECT		1049	
PROJECT		SCALE @ A1	
PROJECT		1:100	
PROJECT		DATE	
PROJECT		March 2018	
PROJECT		STATUS	
PROJECT		Contract	
PROJECT		(GA) 100	
PROJECT		RESPONSIBILITY	
PROJECT		J	
PROJECT		DRAWING NUMBER	
PROJECT		(GA) 100	
PROJECT		DATE	
PROJECT		March 2018	
PROJECT		DRAWN BY	
PROJECT		SF	
PROJECT		CHECKED BY	
PROJECT		-	
PROJECT		PROJECT NUMBER	
PROJECT		1049	
PROJECT		SCALE @ A1	
PROJECT		1:100	
PROJECT		DATE	
PROJECT		March 2018	
PROJECT		STATUS	
PROJECT		Contract	
PROJECT		(GA) 100	
PROJECT		RESPONSIBILITY	
PROJECT		J	
PROJECT		DRAWING NUMBER	
PROJECT		(GA) 100	
PROJECT		DATE	
PROJECT		March 2018	
PROJECT		DRAWN BY	
PROJECT		SF	
PROJECT		CHECKED BY	
PROJECT		-	
PROJECT		PROJECT NUMBER	
PROJECT		1049	
PROJECT		SCALE @ A1	
PROJECT		1:100	
PROJECT		DATE	
PROJECT		March 2018	
PROJECT		STATUS	
PROJECT		Contract	
PROJECT		(GA) 100	
PROJECT		RESPONSIBILITY	
PROJECT		J	
PROJECT		DRAWING NUMBER	
PROJECT		(GA) 100	
PROJECT		DATE	
PROJECT		March 2018	
PROJECT		DRAWN BY	
PROJECT		SF	
PROJECT		CHECKED BY	
PROJECT		-	
PROJECT		PROJECT NUMBER	
PROJECT		1049	
PROJECT		SCALE @ A1	
PROJECT		1:100	
PROJECT		DATE	
PROJECT		March 2018	
PROJECT		STATUS	
PROJECT		Contract	
PROJECT		(GA) 100	
PROJECT		RESPONSIBILITY	
PROJECT		J	
PROJECT		DRAWING NUMBER	
PROJECT		(GA) 100	
PROJECT		DATE	
PROJECT		March 2018	
PROJECT		DRAWN BY	
PROJECT		SF	
PROJECT		CHECKED BY	
PROJECT		-	
PROJECT		PROJECT NUMBER	
PROJECT		1049	
PROJECT		SCALE @ A1	
PROJECT		1:100	
PROJECT		DATE	
PROJECT		March 2018	
PROJECT		STATUS	
PROJECT		Contract	
PROJECT		(GA) 100	
PROJECT		RESPONSIBILITY	
PROJECT		J	
PROJECT		DRAWING NUMBER	
PROJECT		(GA) 100	
PROJECT		DATE	
PROJECT		March 2018	
PROJECT		DRAWN BY	
PROJECT		SF	
PROJECT		CHECKED BY	
PROJECT		-	
PROJECT		PROJECT NUMBER	
PROJECT		1049	
PROJECT		SCALE @ A1	
PROJECT		1:100	
PROJECT		DATE	
PROJECT		March 2018	
PROJECT		STATUS	
PROJECT		Contract	
PROJECT		(GA) 100	
PROJECT		RESPONSIBILITY	
PROJECT		J	
PROJECT		DRAWING NUMBER	
PROJECT		(GA) 100	
PROJECT		DATE	
PROJECT		March 2018	
PROJECT		DRAWN BY	
PROJECT		SF	
PROJECT		CHECKED BY	
PROJECT		-	
PROJECT		PROJECT NUMBER	

DO NOT SCALE FROM THIS DRAWING.
 THIS DRAWING IS THE PROPERTY OF STALLAN-BRAND ARCHITECTURAL DESIGN LTD.
 THE DRAWING IS FOR THE EXCLUSIVE USE OF THE CLIENT AND IS NOT TO BE REPRODUCED OR TRANSMITTED IN ANY FORM OR BY ANY MEANS, ELECTRONIC OR MECHANICAL, INCLUDING PHOTOCOPYING, RECORDING, OR BY ANY INFORMATION STORAGE AND RETRIEVAL SYSTEM.
 ALL DIMENSIONS ARE SHOWN IN METRES.
 THIS DRAWING REMAINS THE COPYRIGHT OF
STALLAN-BRAND ARCHITECTURAL DESIGN LTD

CLIENT
 Ambassador Group

NOTES
 Refer to (21) series drawings for details of external wall types
 Refer to (22) series drawings for details of internal wall types
 Refer to (23) and (33) series drawings for details of floor slab and floor construction/finishes
 Refer to (31) series drawings for details of external glazing and doors
 Refer to (32) series drawings for details of internal doors
 Refer to (34) series for details of external balustrades
 Refer to (72) series drawings for details of fire areas
 Refer to (FR) series drawings for details of fire ratings to partitions

To be read in conjunction with M&E Engineers' Information
 Refer to Structural Engineer's Information for further details of glazed screens, external works and works to floor slabs.



Existing glazing to be fully cleaned, surfaces retained with localised repairs as required. Existing handrails retained, cleaned in full and existing metal balustrades to receive fresh paint finish

New curtain wall glazing 1000mm with a minimum opening area of 0.2m². Glazing to be continuous to any structural opening

New full height curtain wall glazing. Refer to (21) and (31) series drawings for details

Opening 400mm concrete floor slab to create opening for new glazing. Ring Beam retained. Final size to be determined on site. Dependent on existing structure.
 Toughened 60mm F9 glazed screens with bespoke manifestation applied. Refer to (22) panels for details

PROJECT Hanover House Refurbishment	
TITLE Proposed First Floor Plan	
DRAWING NUMBER (GA) 101	RESPONSIVE H
STATUS Construction	
DATE March 2018	SCALE @ A1 1:100
DRAWN BY SF	CHECKED BY -
PROJECT NUMBER 1049	

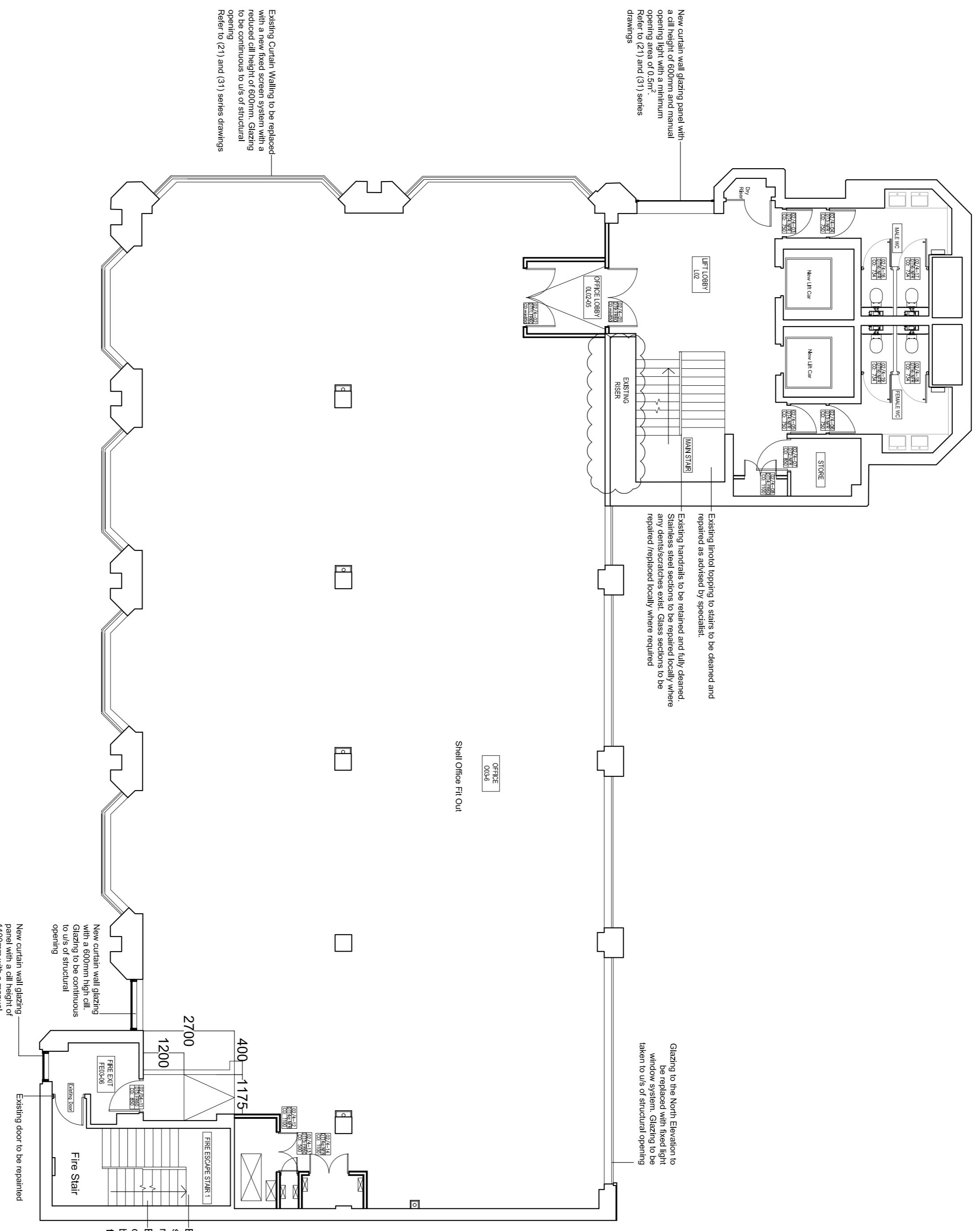
PROJECT
 80 Nicholson Street
 Glasgow
 G5 9ER
 Phone: 0141 258 5015
 Email: info@stallanbrand.com
 Website: www.stallanbrand.com

REV.	REASON FOR ISSUE	DATE
H	Contract floor updated - floor doors removed	15/10/18
G	Rear Arrangement and Access updated	11/09/18
F	Contract Issue	June 18
E	Existing floor door references updated	January 18
D	Sliptr Issue	September 18
C	Door type updated, floor updated	11/09/18
B	Rear Finishes updated	18/04/18
A	Possible rear entrance included	11/04/18

DO NOT SCALE FROM THIS DRAWING.
 THIS DRAWING IS INTENDED FOR INFORMATIONAL PURPOSES ONLY. IT IS NOT TO BE USED FOR CONSTRUCTION. ALL DIMENSIONS ARE SHOWN IN METERS.
 THIS DRAWING REMAINS THE COPYRIGHT OF
STALLANBRAND ARCHITECTURAL • DESIGN LTD

Ambassador Group

- NOTES**
- Refer to (21) series drawings for details of external wall types
 - Refer to (22) series drawings for details of internal wall types
 - Refer to (23) and (33) series drawings for details of floor slab and floor construction/finishes
 - Refer to (31) series drawings for details of external glazing and doors
 - Refer to (32) series drawings for details of internal doors
 - Refer to (34) series for details of external balustrades
 - Refer to (72) series drawings for details of MFC areas
 - Refer to (FR) series drawings for details of fire ratings to partitions
- To be read in conjunction with M&E Engineers' information**
 Refer to Structural Engineer's information for further details of glazed screens, external works and works to floor slabs.



REV.	REASON FOR ISSUE	DATE
H	Control Room Updater - Glass Doors Removed	15/01/19
G	Rear Arrangement and Access Updated	11/08/19
F	Control Room	June 19
E	Existing floor door references updated	January 19
D	Sliptr Issue	September 18
C	Door type and floor problems updated	11/05/18
B	Rear positions updated	18/04/18
A	MFC position updated. Rear positions updated	11/04/18

Stallan-Brand

80 Nicholson Street
 Glasgow
 G5 9ER

Phone: 0141 258 5015
 Email: info@stallanbrand.com
 Website: www.stallanbrand.com

Hanover House Refurbishment

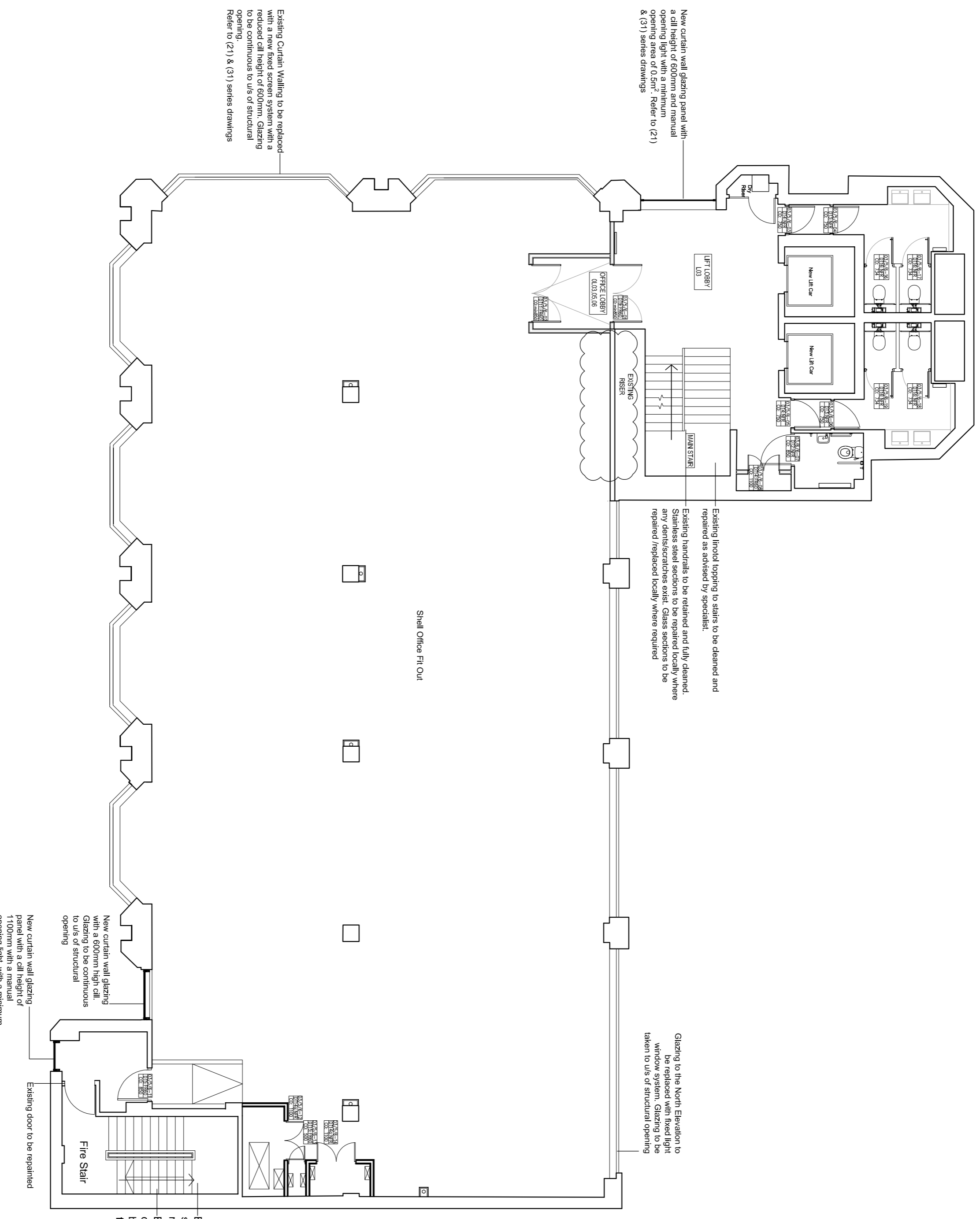
Proposed Second & Fourth Floor Plan

DATE	STATUS	DRAWING NUMBER	RESPONSIBILITY
March 2017	Construction	(GA) 102	H

SCALE @ A1
 1:100
 PROJECT NUMBER
 1049

Ambassador Group

- NOTES**
- Refer to (21) series drawings for details of external wall types
 - Refer to (22) series drawings for details of internal wall types
 - Refer to (23) and (33) series drawings for details of floor slab and floor construction/finishes
 - Refer to (31) series drawings for details of external glazing and doors
 - Refer to (32) series drawings for details of internal doors
 - Refer to (34) series for details of external balustrades
 - Refer to (72) series drawings for details of fire ratings to partitions
 - Refer to (FR) series drawings for details of fire ratings to partitions
- To be read in conjunction with M&E Engineers' information**
 Refer to Structural Engineer's information for further details of glazed screens, external works and works to floor slabs.



Existing stair to be fully cleaned, surfaces retained with localised sandblasting and redecorated. Existing handrails retained, cleaned in full and existing metal balustrades to receive fresh paint finish

New curtain wall glazing - Existing door to be replaced with a new fixed screen system with a call height of 600mm and manual opening height with a minimum of 1100mm with a minimum of 1100mm with a minimum of 1100mm. Glazing to be continuous to u/s of structural opening. Refer to (21) & (31) series drawings

PROJECT		Hanover House Refurbishment	
TITLE		Proposed Third, Fifth & Sixth Floor Plan	
DRAWING NUMBER	(GA) 103	REVISION	H
STATUS	Construction		
DATE	March 2017	SCALE @ A1	1:100
DRAWN BY	SF	CHECKED BY	-
PROJECT NUMBER	1049		

