

TO LET - OFFICE

THE CULZEAN SUITES

36 Renfield Street, Glasgow, G2 1LU



Key Highlights

- 366 to 1,345 sq ft
- Refurbished Modern Reception
- Cycle, shower and changing facilities
- LED Lighting
- VRF Air Conditioning
- Full Access Raised Floors
- DDA Access

SAVILLS Glasgow
5th Floor Cadworks
Glasgow G2 6SE
0141 248 7342
savills.co.uk



Description

The Culzean offers newly refurbished, high quality office suites within a traditional landmark building in the heart of Glasgow's CBD.

The common areas of the building have been fully refurbished to provide high-quality office accommodation with attractive entrance foyer area. Each suite on the 4th Floor comes fully equipped with a dedicated meeting room and kitchenette.

Location

The Culzean is well positioned within Glasgow's core Central Business District (CBD), surrounded by some of Glasgow's most popular restaurants, cafes and retail shops.

Additionally, the building benefits from excellent access to public transport with both Glasgow Central and Queen Street station being within easy walking distance.

Accommodation

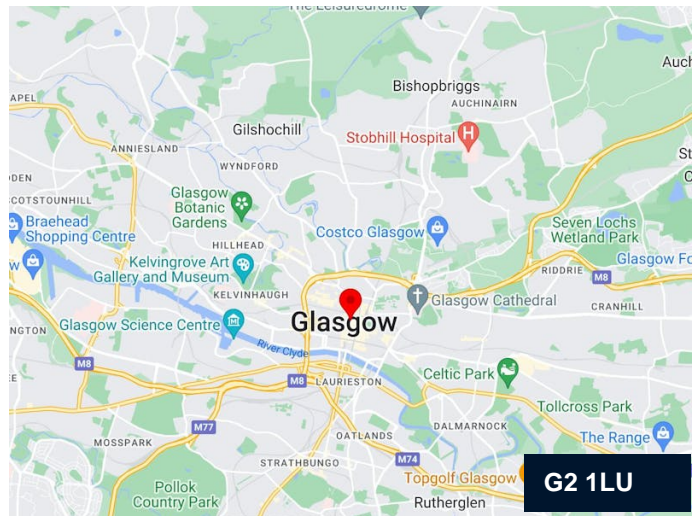
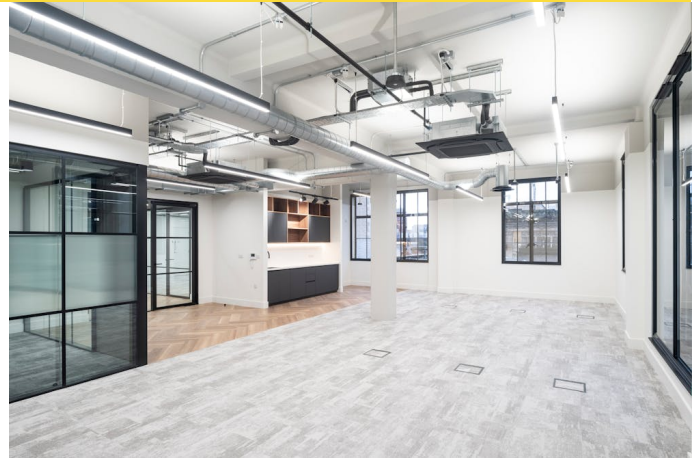
The accommodation comprises the following areas:

Name	sq ft	Rent	Rates Payable	Service charge	Availability
4th - Suite 2	506	£27.50 /sq ft	£7.91 /sq ft	£4.74 /sq ft	Under Offer
4th - Suite 3	366	£27.50 /sq ft	£7.91 /sq ft	£4.74 /sq ft	Available
4th - Suite 5	1,345	£27.50 /sq ft	£7.91 /sq ft	£4.74 /sq ft	Available
Total	2,217				

Business Rates

Rates payable: £7.91 per sq ft

Effective from 1 April 2026



Contact

Colin McGhee

0141 222 4140

07714140771

colin.mcgree@savills.com

Murray Irvine

07812447073

07812447073

murray.irvine@savills.com

Phil Reid (Phil Reid Associates)

0141 225 5168

07876 398465

phil@philreidassociates.com

IMPORTANT NOTICE

Savills, their clients and any joint agents give notice that: 1. They are not authorised to make or give any representations or warranties in relation to the property either here or elsewhere, either on their own behalf or on behalf of their client or otherwise. They assume no responsibility for any statement that may be made in these particulars. These particulars do not form part of any offer or contract and must not be relied upon as statements or representations of fact. 2. Any areas, measurements or distances are approximate. The text, photographs and plans are for guidance only and are not necessarily comprehensive. It should not be assumed that the property has all necessary planning, building regulation or other consents and Savills have not tested any services, equipment or facilities. Purchasers must satisfy themselves by inspection or otherwise. Generated by AgentsInsight / Generated on 01/06/2026

savills

