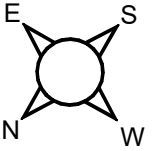
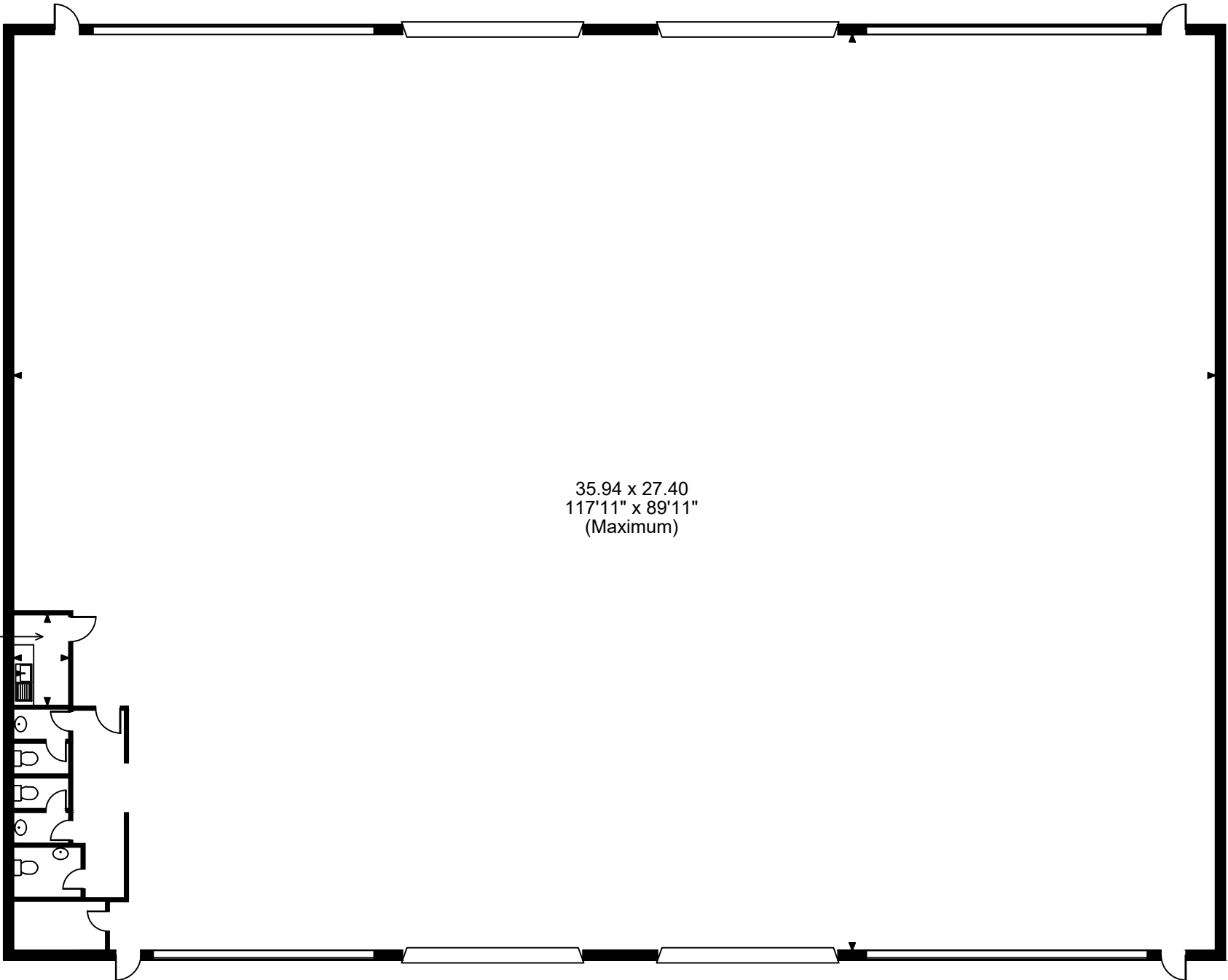


Motherwell Park, Belgrave Street, Bellshill



35.94 x 27.40  
117'11" x 89'11"  
(Maximum)

2.71 x 1.65  
8'11" x 5'5"



**FOR ILLUSTRATIVE PURPOSES ONLY - NOT TO SCALE**

The position & size of doors, windows, appliances and other features are approximate only.

© ehouse. Unauthorised reproduction prohibited. Drawing ref. dig/8652995/TRL