



Better
for
business

BEYOND **Glencar** 



17.01.2024

Elfield Park, Milton Keynes
Design Information

Chetwoods London Ltd
13-16 Britton Street
London EC1M 5SX

+44 (0)20 7490 2400
www.chetwoods.com

Chetwoods Birmingham Ltd
32 Frederick Street
Birmingham B1 3HH

+44 (0)12 1234 7500
www.chetwoods.com

Issue date	17.01.24
Document status	Preliminary
Document number	G1161-CA-XX-XX-PP-A-06003
File Ref	-
Revision	P01
Author	TH
Checked by	CW

REVISION HISTORY			
Rev.	Date	Author / Checked	Description
P01	17/01/24	TH/CW	Preliminary Issue

© Chetwoods (London) Ltd

Please note the information contained in this drawing / document is solely for the benefit of the Employer and should not be relied upon by third parties.
All information is preliminary and is issued subject to surveys, site investigations, design development & validation and statutory approvals.

Contents

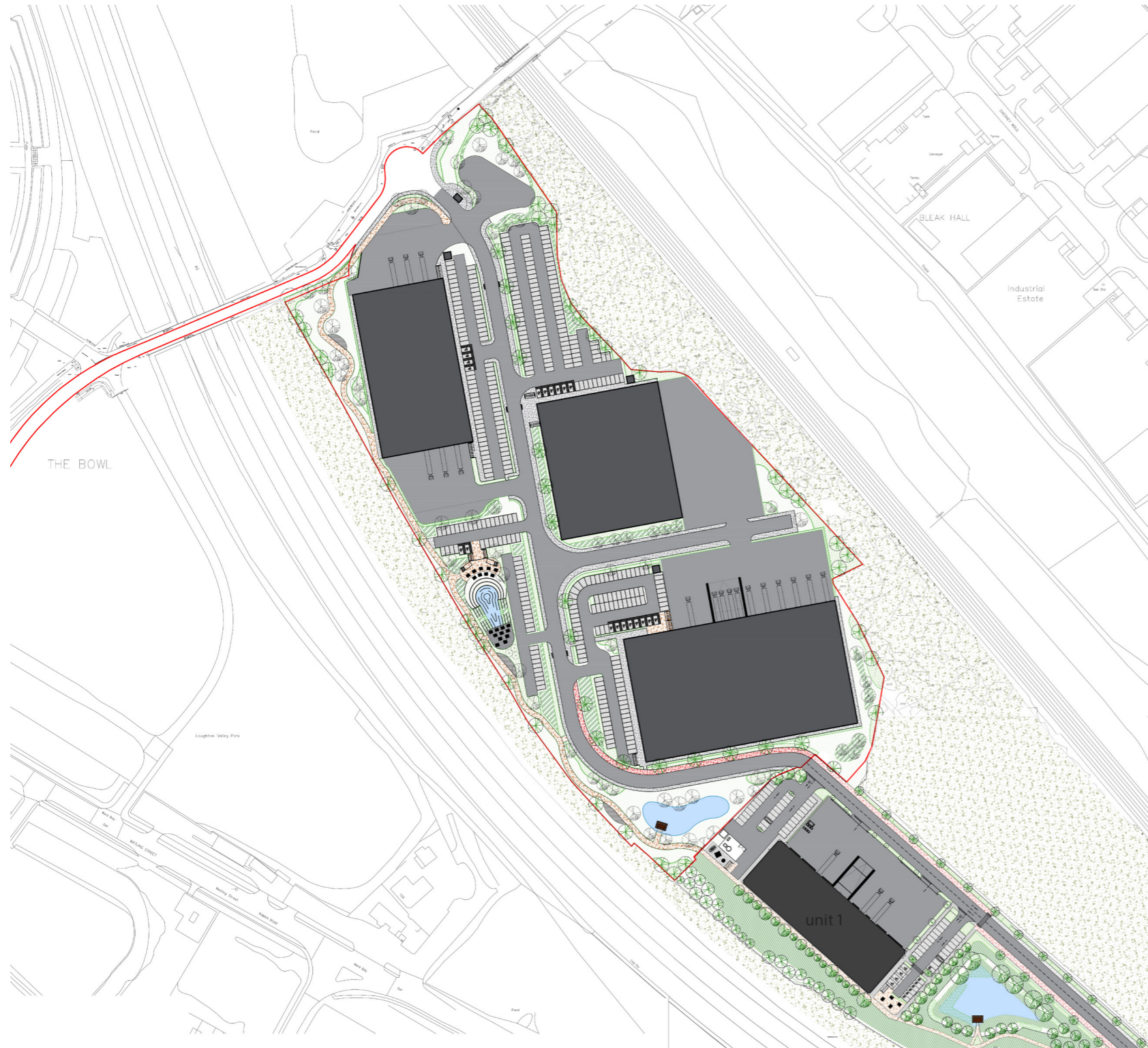
Masterplan

Site Plan

General Arrangement Plans

External Elevations

Masterplan Phase 1 & 2



Proposed Master Plan Showing Phase 1 & Potential Future Phase 2

— Denotes Potential Future Phase 2 Works

Site Plan

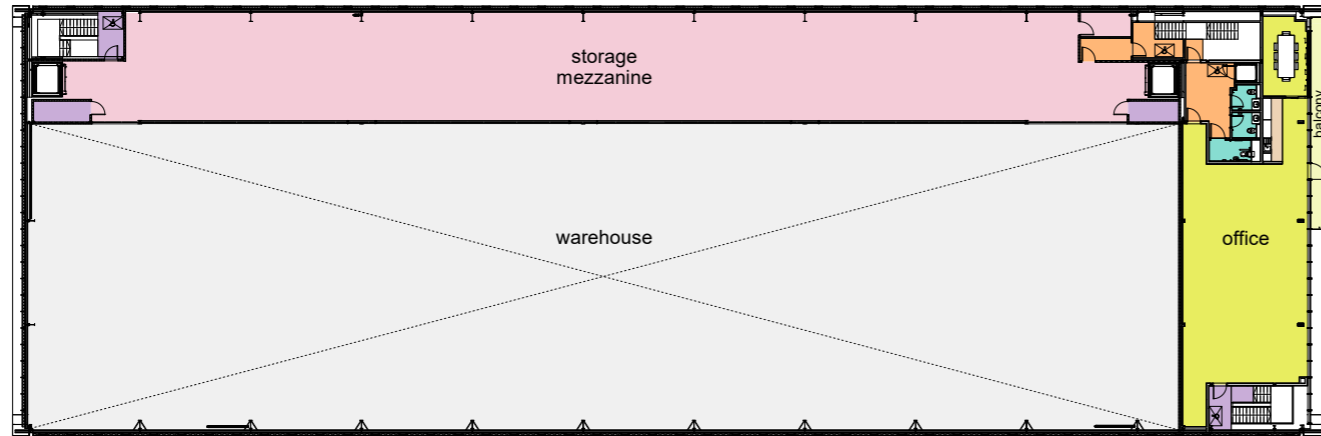
Unit 1



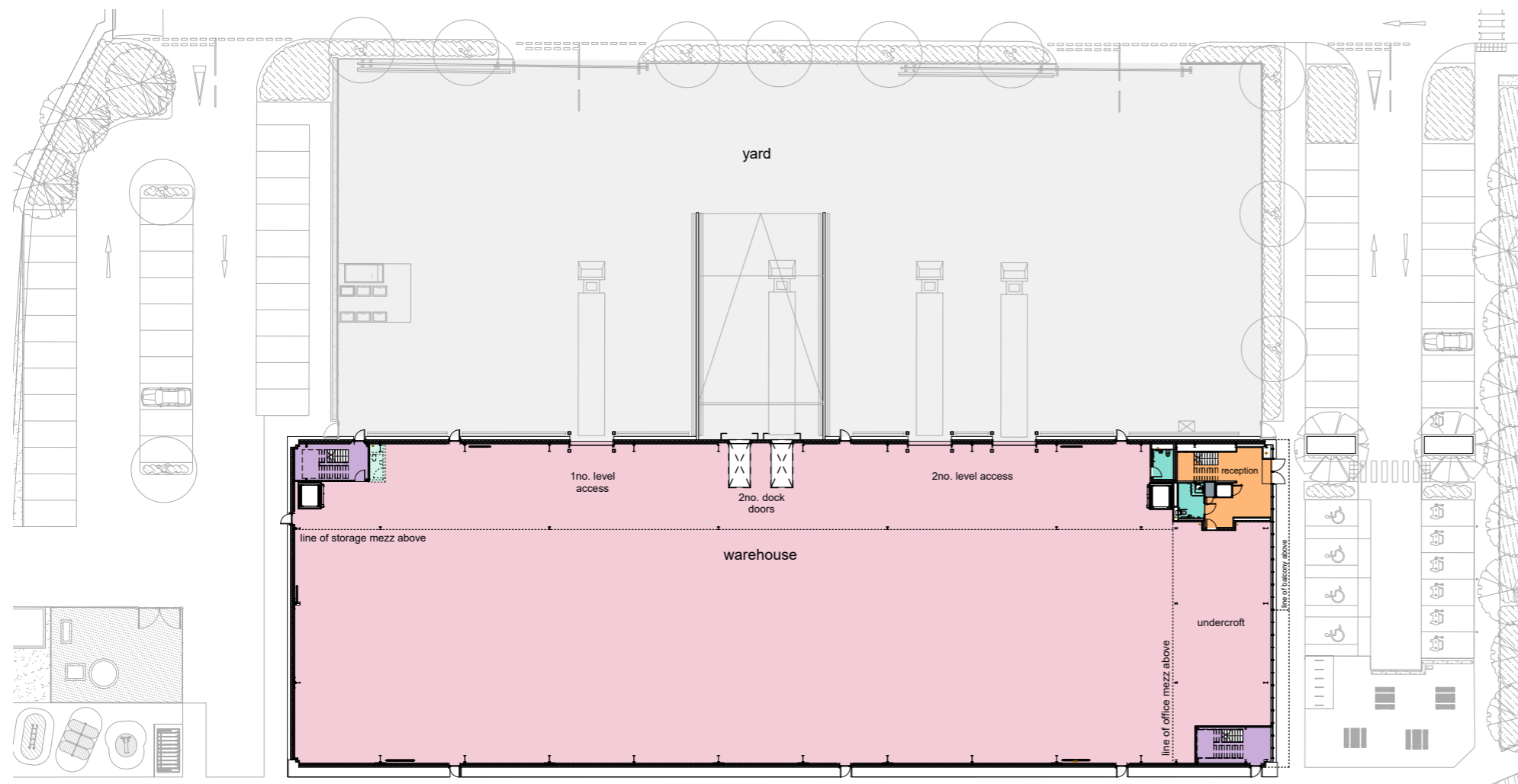
Proposed Site Plan for Unit 1 | Phase 1

General Arrangement Plans

Unit 1



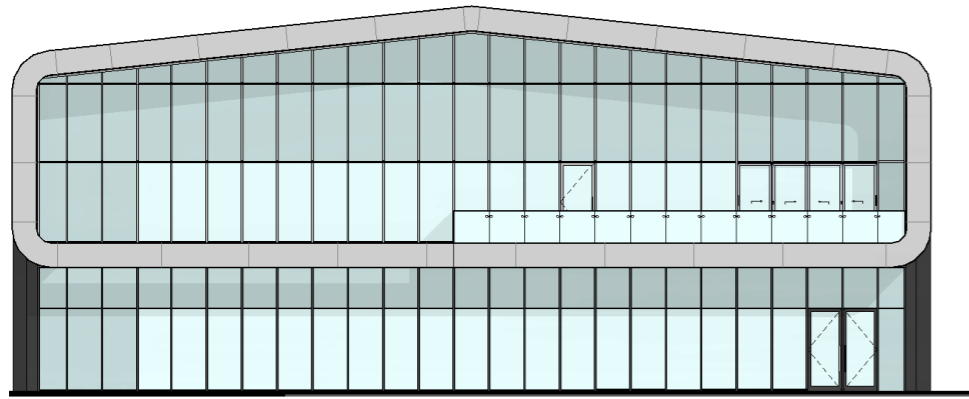
Proposed Mezzanine Floor Plan for Unit 1 | Phase 1



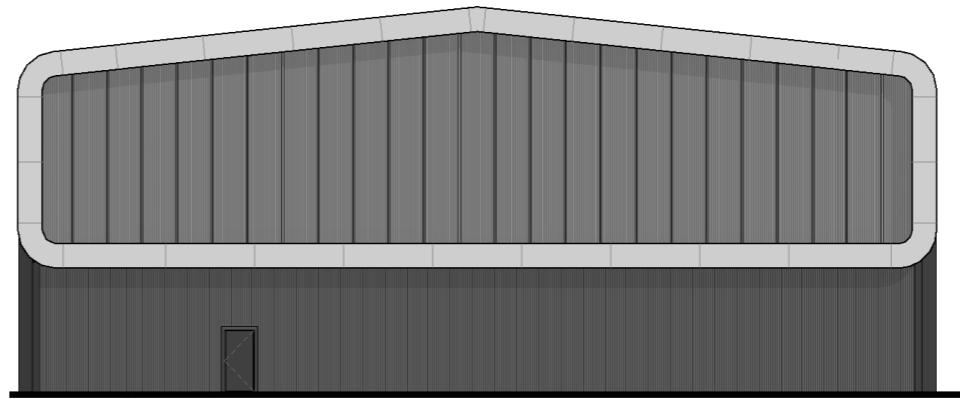
Proposed Ground Floor Plan for Unit 1 | Phase 1

External Elevations

Unit 1



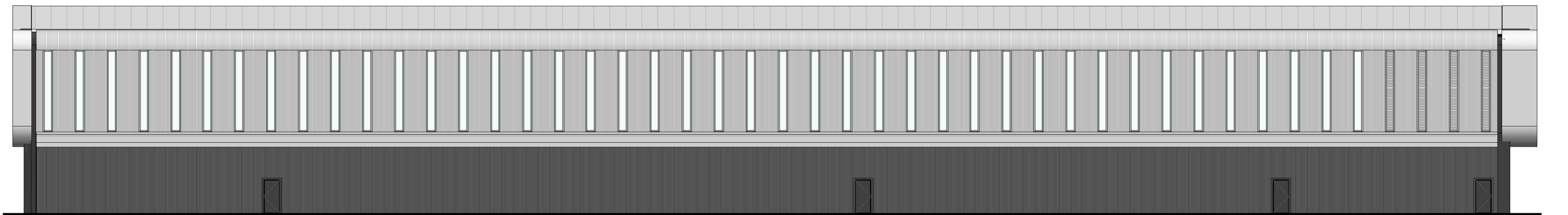
Proposed South East Elevation - Main Entrance & Mezzanine Office



Proposed North West Elevation - North Car Park



Proposed South East Elevation - Yard



Proposed South West Elevation - A5

Chetwoods London Ltd
12–13 Clerkenwell Green
London EC1R 0QJ

Laurie Chetwood
+44 (0)20 7490 2400
www.chetwoods.com

Chetwoods Birmingham Ltd
32 Frederick Street
Birmingham B1 3HH

Tim Ward
+44 (0)12 1234 7500
www.chetwoods.com