

95 GRESHAM STREET

LONDON, EC2

Fourth Floor Area Plan

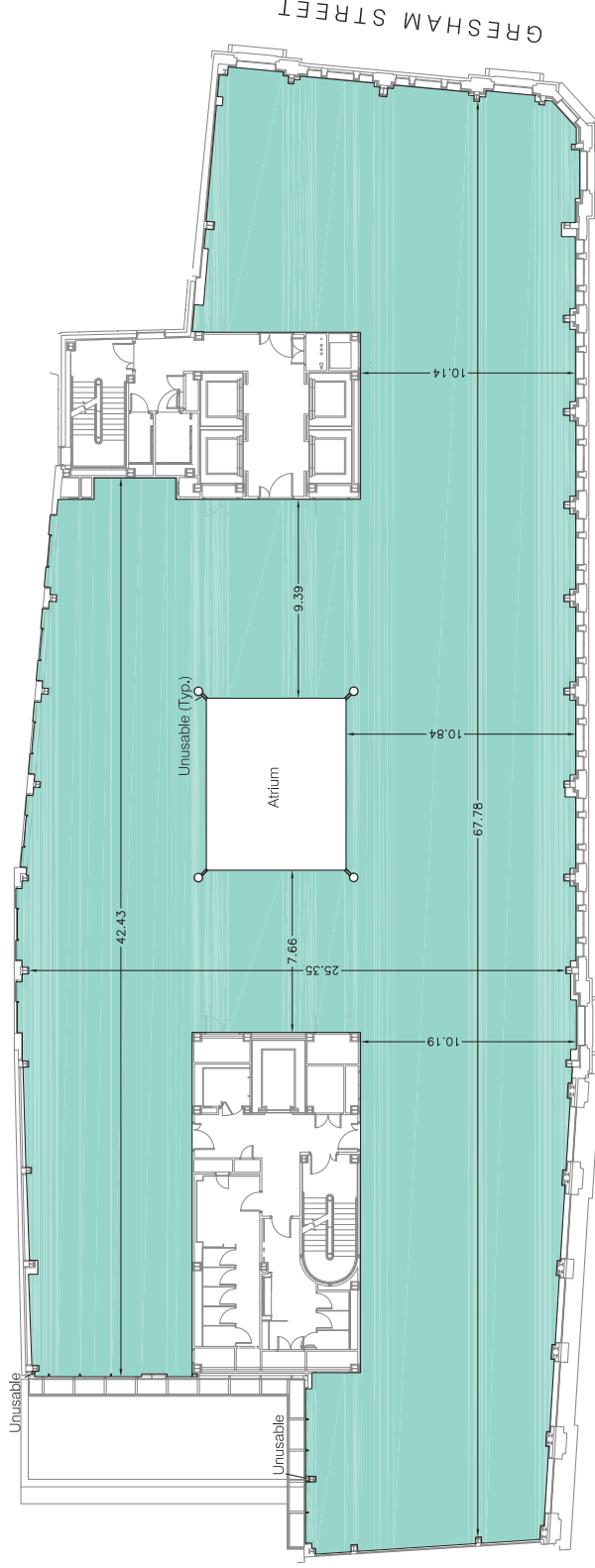
Net Internal Area

OFFICE 1246.1 sq m 13413 sq ft

TOTAL NIA: 1246.1 sq m 13413 sq ft

The following area has been EXCLUDED from the OFFICE Area:

Unusable 0.2 sq m 2 sq ft



BASINGHALL STREET

Dwg No. 23132-A4

Issue A May 2010

Scaled for presentation purposes

Plowman Craven

T +44(0)1582 765566 E info@plowmancraven.co.uk
F +44(0)1582 765370 W www.plowmancraven.co.uk

Revisions:
A - Original Issue (May 2010)
B -
C -
D -
E -
F -

Notes:
This drawing complies with the 6th edition of the RICS code and indicates the extent of the areas quoted, produced to an accuracy commensurate with standard presentation scales. It is held in a scaled digital CAD format.
The grey scale data is shown for reference purposes only. The hatched area shows the measured as built line. The two therefore may not coincide.

Condition of Site:
Occupied
Vacant
Heavy Fit-Out
Shell & Core
Under Construction
Cat A Fit-Out