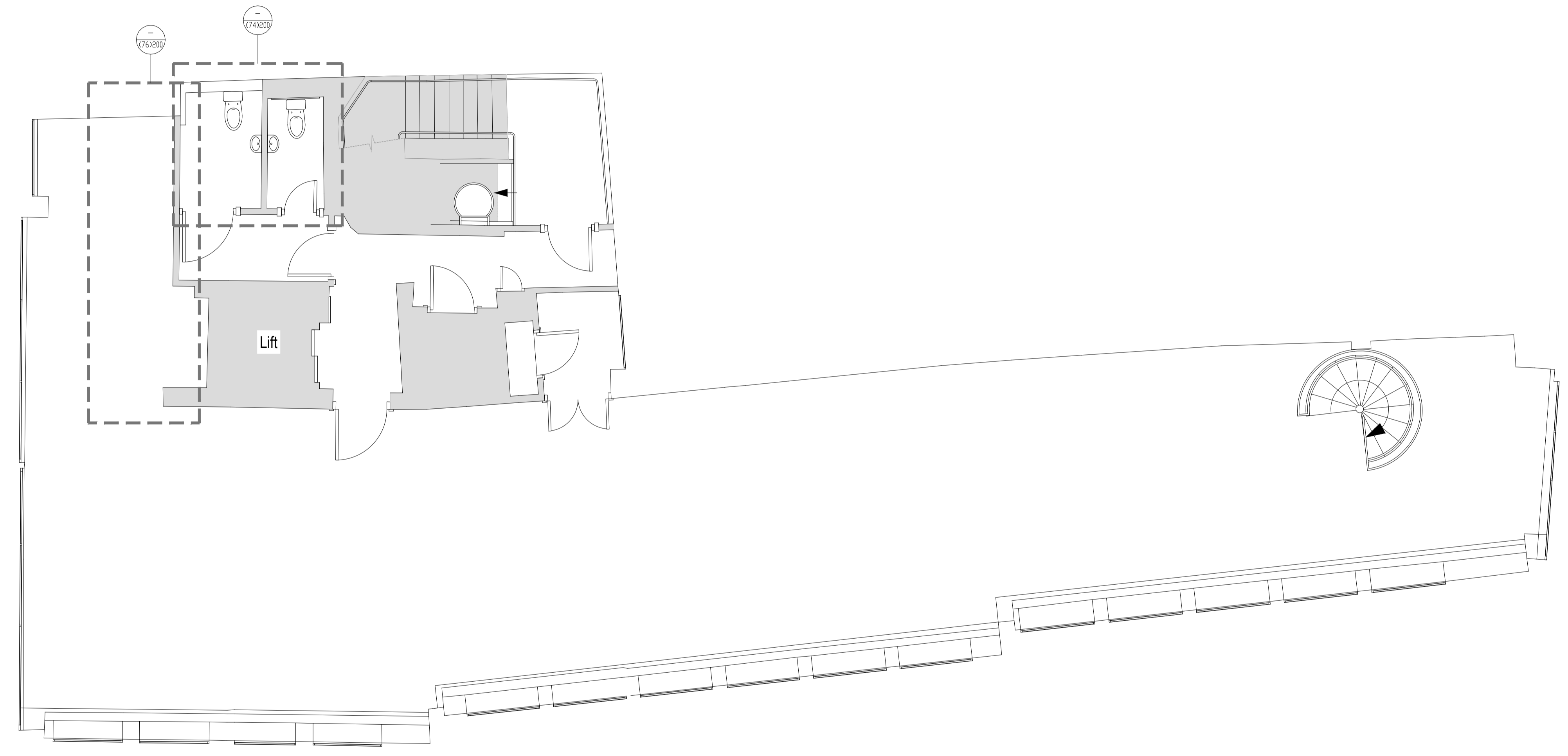


DO NOT SCALE ANY DIMENSIONS OFF THIS DRAWING. ANY DISCREPANCIES BETWEEN THIS DRAWING AND OTHER INFORMATION ARE TO BE REFERRED TO FABRIC (EU) LIMITED WHERE THE DRAWING RELATES TO AN EXISTING BUILDING OR COMPLETED CONSTRUCTION. THE CONTRACTOR IS RESPONSIBLE FOR CHECKING THAT THERE IS NO CONFLICT BETWEEN ACTUAL BUILDING DIMENSIONS AND DRAWING DIMENSIONS. IN THE EVENT OF DISCREPANCIES BETWEEN THIS DRAWING AND SUBCONTRACTOR'S APPROVED WORKING DRAWINGS FOR RELEVANT BUILDING COMPONENTS, THE SUBCONTRACTOR'S DRAWING SHALL TAKE PRECEDENCE. ANY CONFLICTS ARISING OUT OF INFORMATION AS NOTED ABOVE MUST BE REPORTED IMMEDIATELY TO FABRIC (EU) LIMITED. THIS DRAWING IS THE COPYRIGHT OF FABRIC (EU) LIMITED. ALL DIMENSIONS ARE IN MILLIMETRES UNLESS OTHERWISE STATED.

GENERAL ARRANGEMENT KEY

BASE BUILD DEMISE/AREAS OUT OF SCOPE



NOTE:  
- ALL RETAINED FINISHES ARE TO BE PROTECTED DURING STRIP OUT.

REV	DATE	PURPOSE OF ISSUE	BY
C2	19.10.02	UPDATED TO SHOW TEA-POINT OMITTED	MT
C1	19.09.30	ISSUED FOR CONSTRUCTION	MT
P1	19.07.26	FIRST ISSUE	MT

CLIENT | OVAL EUROPE  
 PROJECT | 17 MOORGATE  
 LONDON, EC2R 6AR  
 DRAWING | GENERAL ARRANGEMENT PLAN  
 SIXTH FLOOR  
 SCALE | A1 @ 1:50  
 CAD FILE | 465(10)106\_C2.dwg  
 DRAWN | MT  
 CHECKED | MRV  
 DRAWING NO. | 465(10)106  
 STATUS |  PRELIMINARY  
 TENDER  
 CONSTRUCTION  
 AS BUILT  
 REV. C2