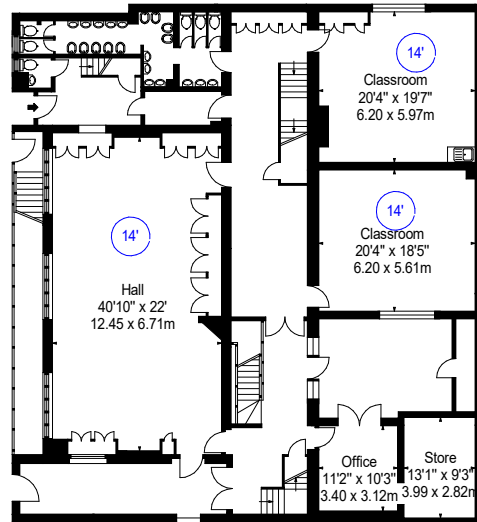
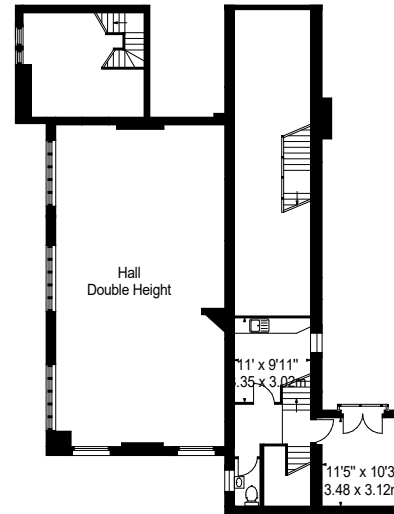


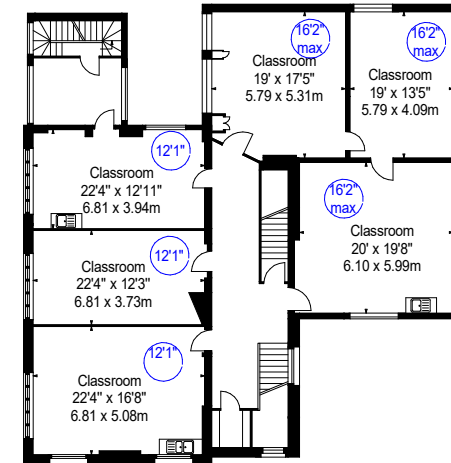
BASEMENT



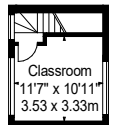
GROUND FLOOR



MEZZANINE



FIRST FLOOR



SECOND FLOOR

APPROX. GROSS INTERNAL AREA *
7466 Ft² - 693.59 M²

Property Details: 27 EDGE STREET LONDON W8 7PN	Surveyed and Drawn By: BKR Hideaway Work Space 1 Empire Mews London SW16 2BF
SCALE - 1:300 @ A4	Tel: 0345 257 2023 info@bkrfloorplans.co.uk www.bkrfloorplans.co.uk
REFERENCE NUMBER : 103534	© BKR 2022
Plans Drawn: 18.07.2022	