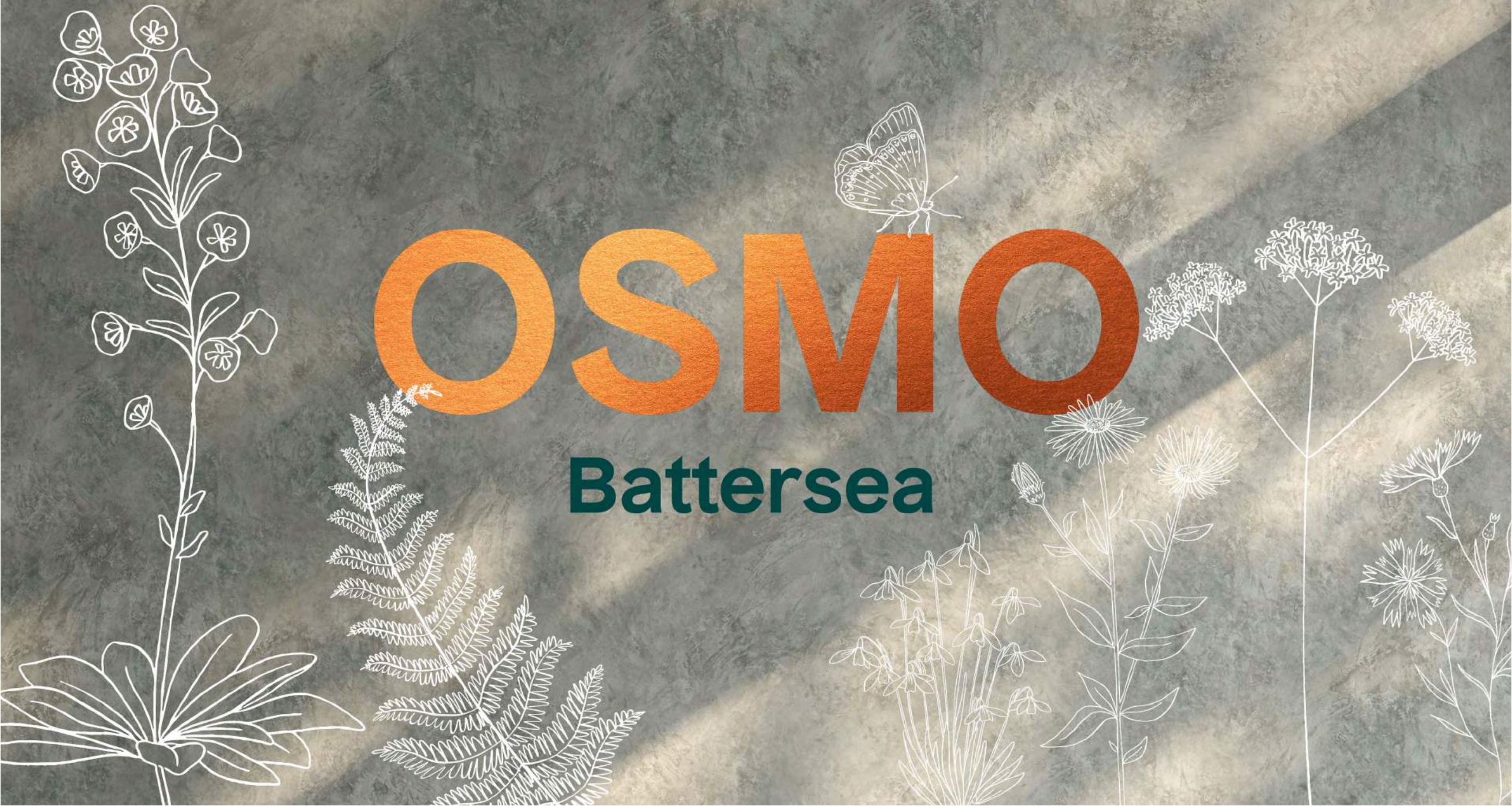


# OSMO

Battersea



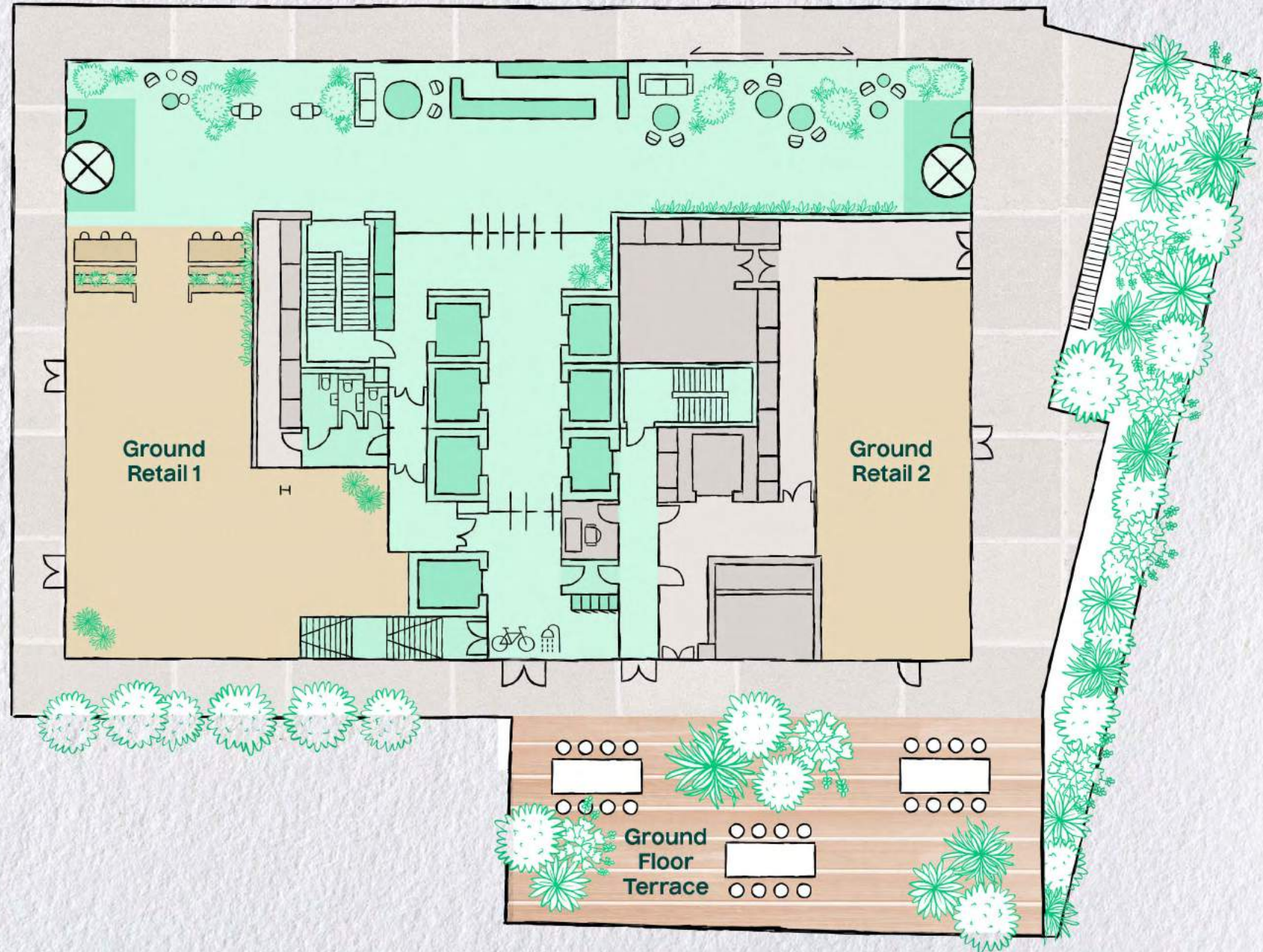
# GROUND FLOOR

**Reception:** 8,837 sq. ft | 821 sq. m

**Retail Unit 1:** 2,142 sq. ft | 199 sq. m

**Retail Unit 2:** 1,356 sq. ft | 126 sq. m

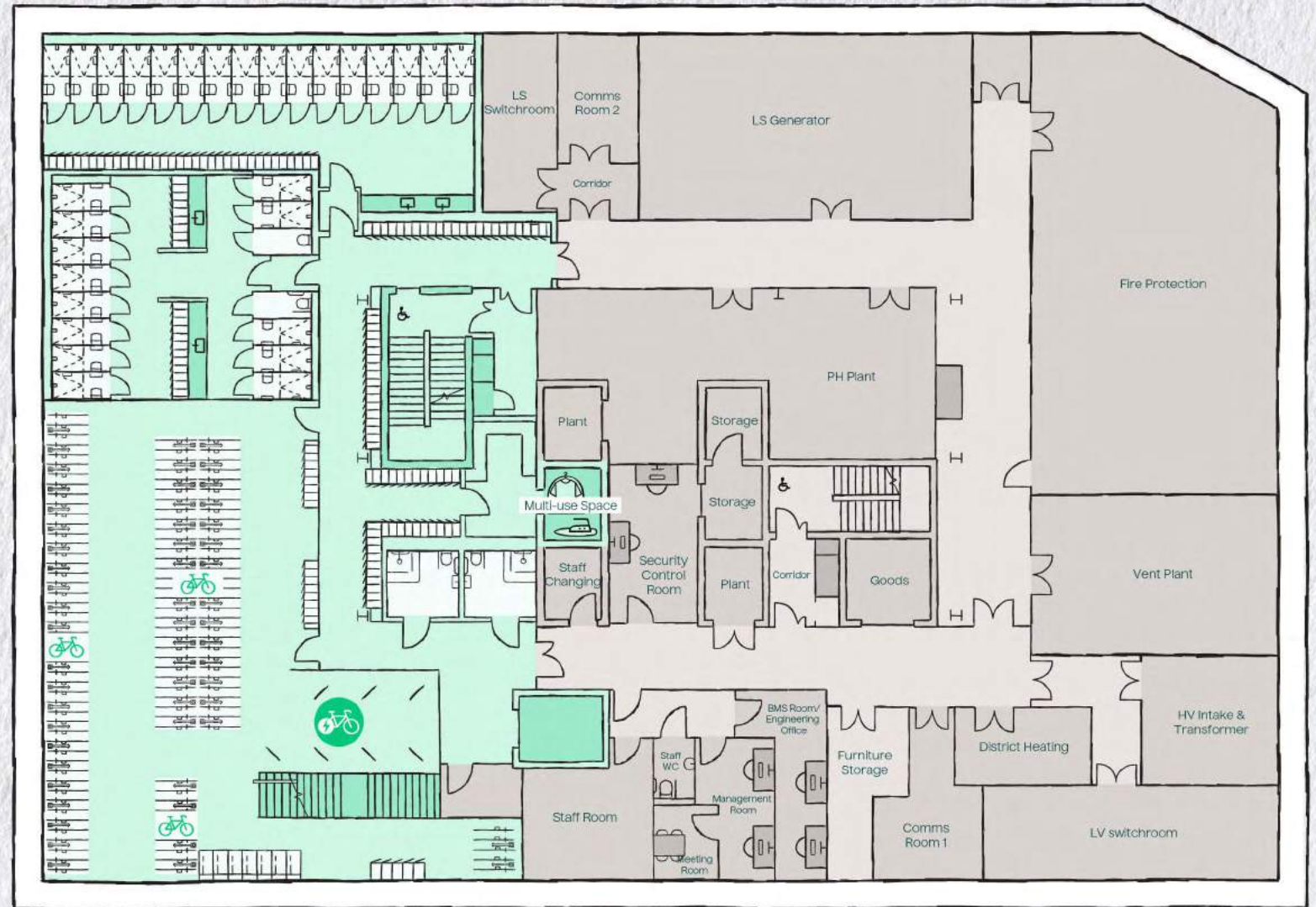
**Terrace:** 2,067 sq. ft | 192 sq. m



# LOWER GROUND FLOOR

340 Cycle Spaces  
12 Electric Cycle Spaces  
380 Lockers  
29 Showers  
Cycle Service Station  
Drying Room

LG

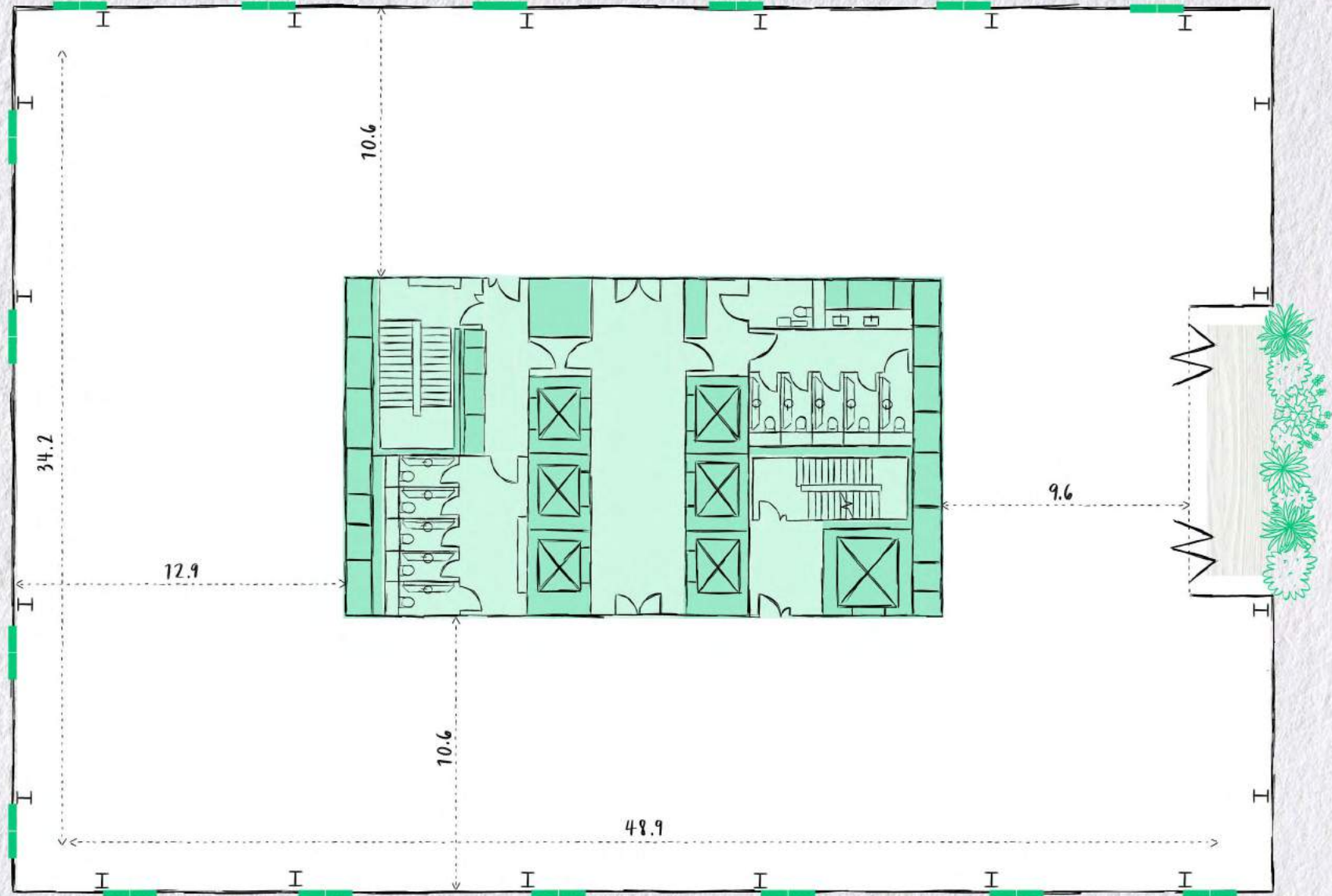


# FLOORS 1-11

**Office:** 14,553 sq. ft | 1,352 sq. m

**Terrace:** 312 sq. ft | 29 sq. m

1-11

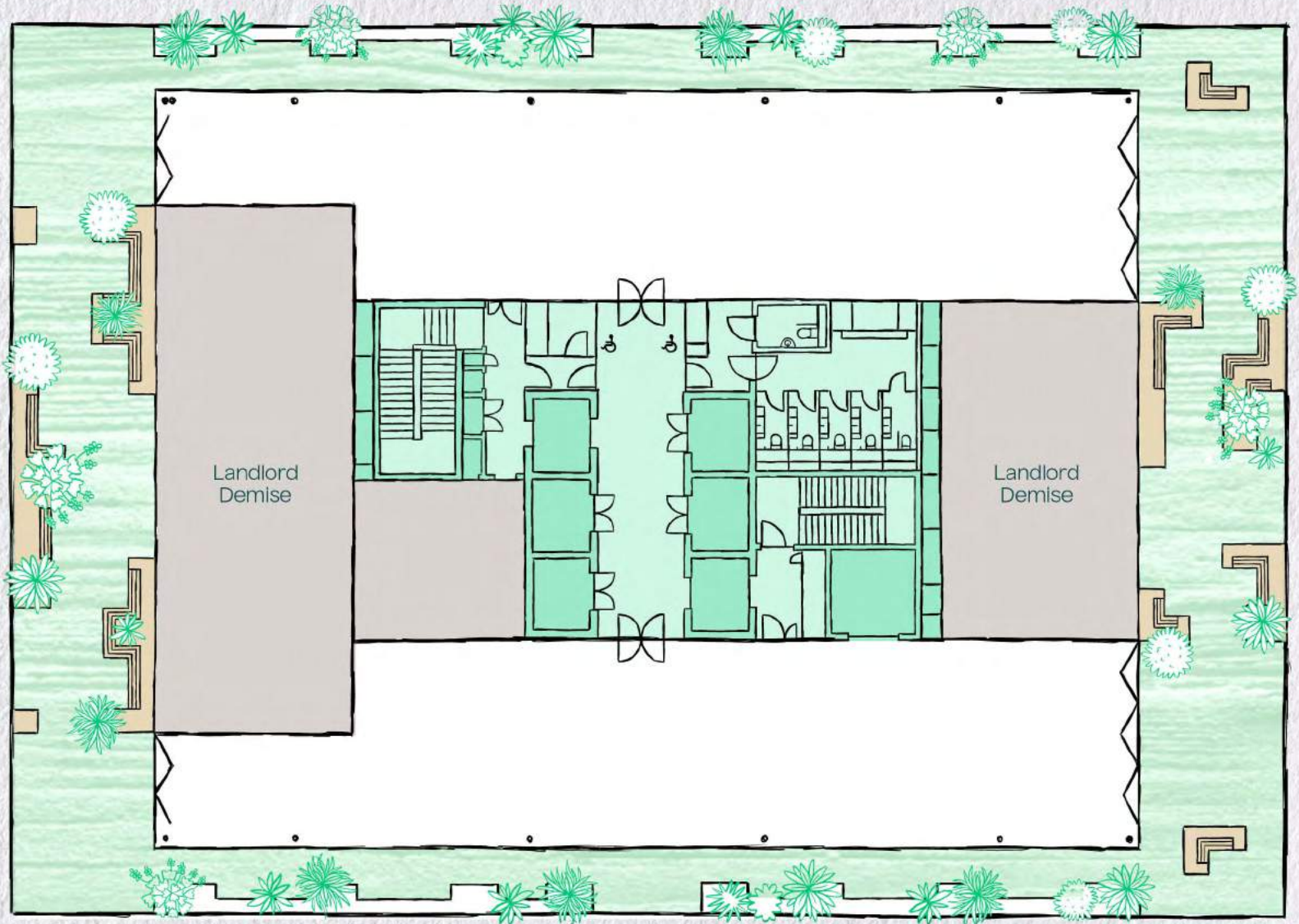


# SKY SUITE & ROOF TERRACE

**Office:** 5,899 sq. ft | 548 sq. m

**Terrace:** 5,920 sq. ft | 550 sq. m

12



# SAY HELLO

A DEVELOPMENT BY



**PETER GRAY**  
+44 (0) 7765 220 528  
PETER.GRAY@KNIGHTFRANK.COM

**JONNY LEE**  
+44 (0) 7885 389 426  
JONNY.LEE@KNIGHTFRANK.COM

**MIKE VOLLER**  
+44 (0) 7739 763 699  
MIKE.VOLLER@KNIGHTFRANK.COM

**BEN LEWIS**  
+44 (0) 7966 233 680  
BEN.LEWIS@KNIGHTFRANK.COM



**NICK PEARCE**  
+44 (0) 7879 881 366  
NICK.PEARCE@SAVILLS.COM

**HUNTER BOOTH**  
+44 (0) 7710 965 693  
HUNTER.BOOTH@SAVILLS.COM

**ANGUS TULLBERG**  
+44 (0) 7976 256 487  
ANGUS.TULLBERG@SAVILLS.COM