

NOTES

THIRDWAY INTERIORS DO NOT ACCEPT LIABILITY FOR ANY ERRORS AND OMISSIONS ARISING FROM THE PREPARATION OF BASE BUILD DRAWINGS WHICH ARE DERIVED FROM ORIGINAL MATERIAL PROVIDED BY OTHERS.

ALL DISCREPANCIES ARE TO BE REPORTED TO THIRDWAY INTERIORS.

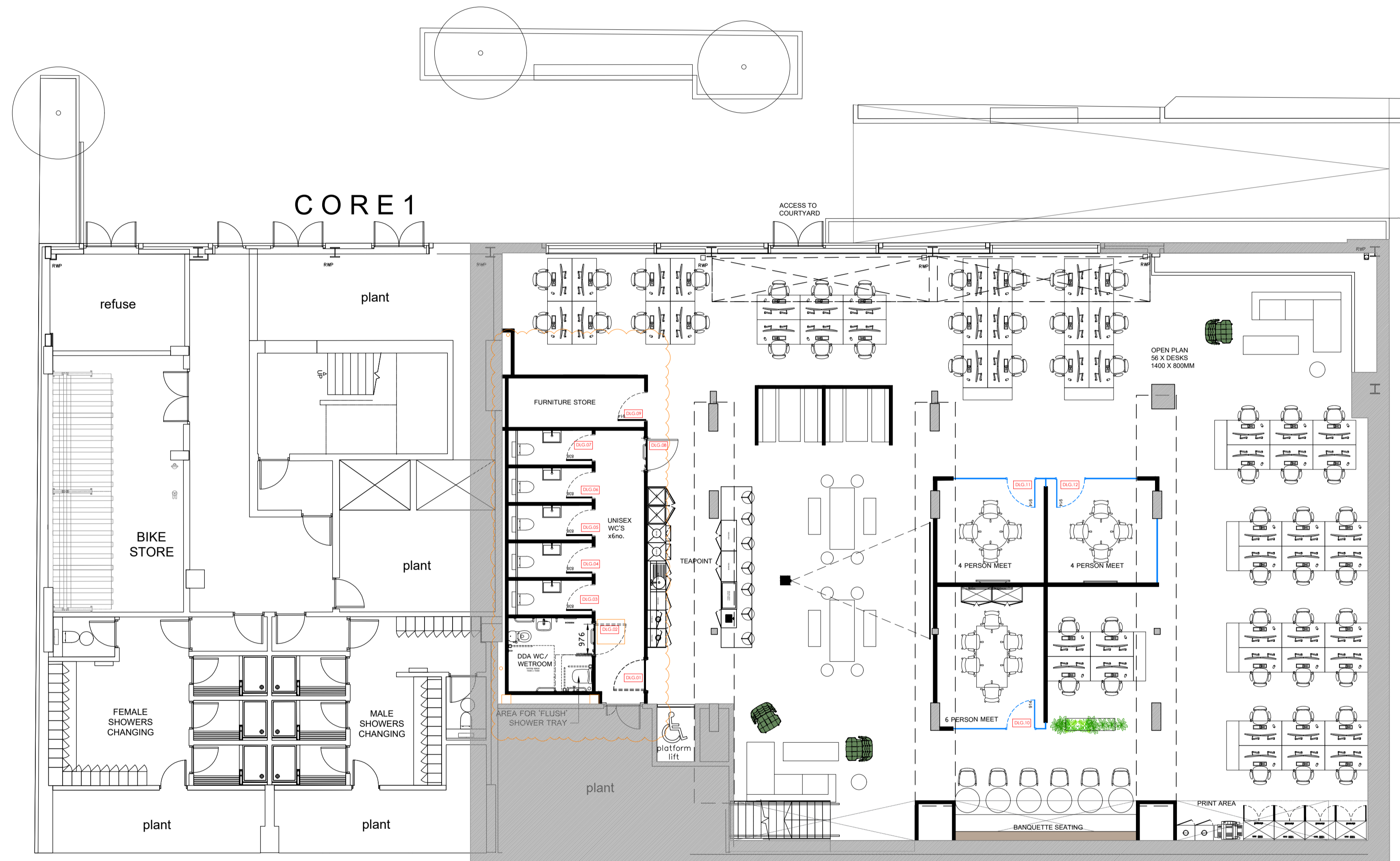
GRID LINES ARE FOR REFERENCE PURPOSES ONLY.

ALL DIMENSIONS TO BE VERIFIED BY CONTRACTOR ON SITE PRIOR TO ANY WORKS COMMENCING.

DO NOT SCALE FROM THIS DRAWING.

THIS DOCUMENT IS THE PROPERTY OF THIRDWAY INTERIORS. COPYRIGHT IS RESERVED BY THEM, AND THE DRAWING IS ISSUED ON THE CONDITION THAT IT IS NOT COPIED, REPRODUCED OR RETAINED BY, NOR DISCLOSED TO ANY UNAUTHORISED PERSON, EITHER WHOLLY OR IN PART, WITHOUT THE CONSENT IN WRITING FROM THIRDWAY INTERIORS.

© THIRDWAY INTERIORS



STATUS

- Approval / Comment
- Building Control
- Contract
- Construction
- As-Built

REVISION DETAIL

REV	DETAIL	BY	DATE
C1	CONSTRUCTION ISSUE	RS	04/01
C2	UPDATED CONSTRUCTION ISSUE, WC AREA AMENDED	RS	21/01
C3	BASEBUILD DRAWING UPDATED	RS	25/01

CLIENT

SCHRODERS

PROJECT ADDRESS

**WENLOCK WORKS
1C&1E SHEPERDESS WALK
LONDON
N1 7QE**

DRAWING TITLE

**LOWER GROUND FLOOR
GENERAL ARRANGEMENT
WORKING DRAWING**

DWG NO: **29445 LG GA**

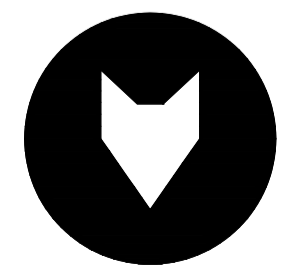
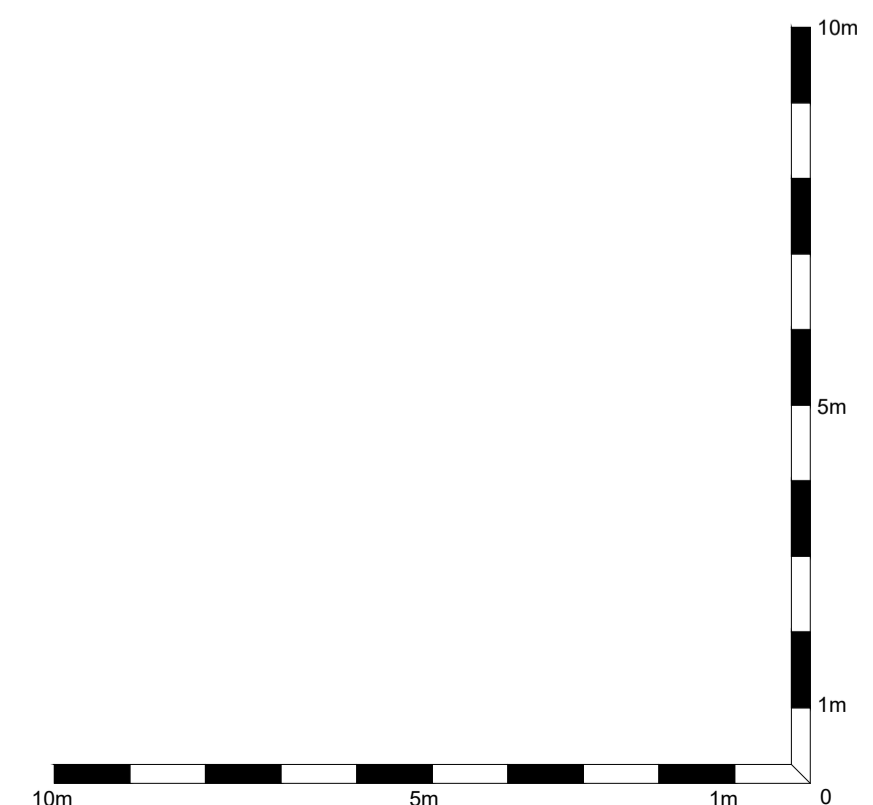
REVISION: **C3**

SCALE @A1: **1:100** @ A3: **1:200**

DATE: **20.08.20**

DRAWN BY: **RS**

CHECKED BY: **FS**



THIRDWAY