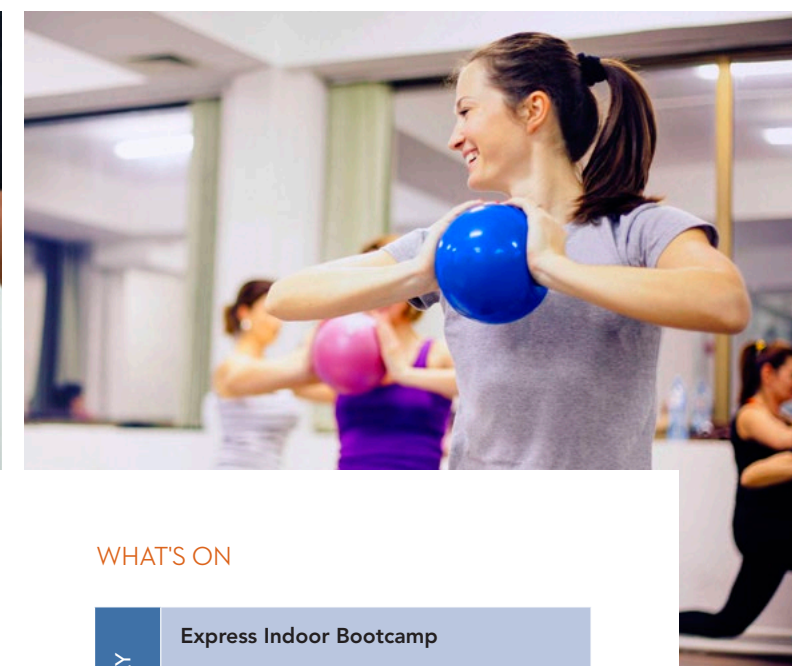
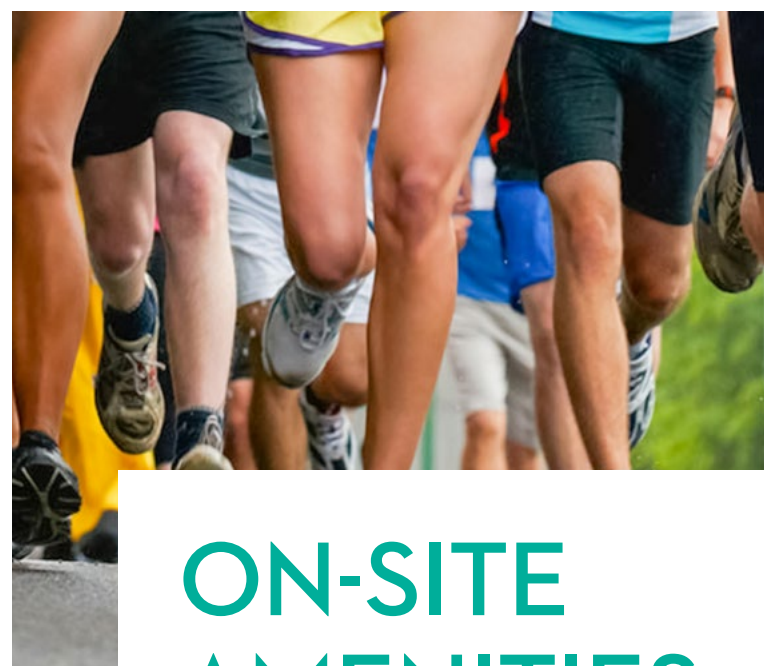
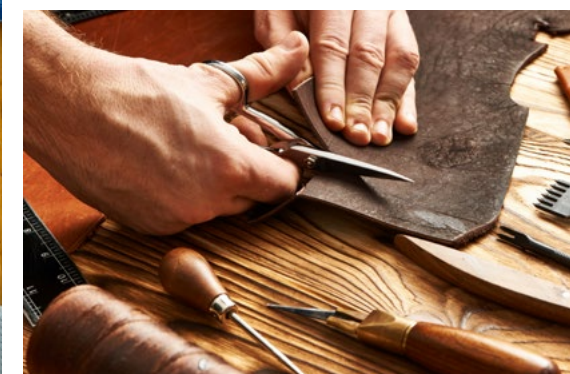
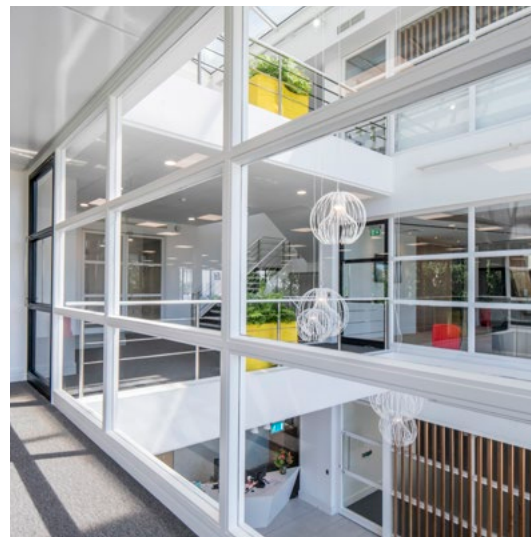


SLOUGH | 258  
BATH ROAD  
CENTRAL

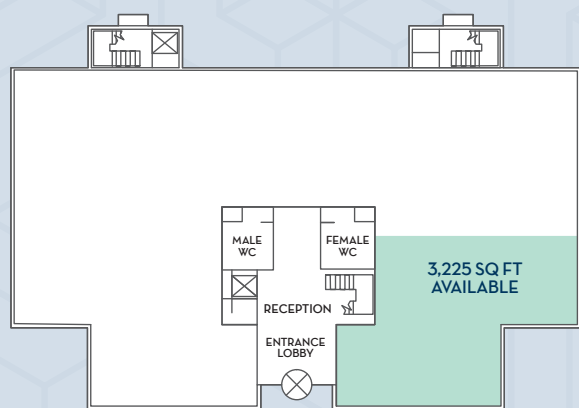
3,200 - 10,400 SQ FT  
GRADE 'A' OFFICES





## GROUND FLOOR PLAN

## FIRST FLOOR PLAN



## SPECIFICATION

- Full access raised floor
- Suspended ceiling
- Air conditioning
- LED lighting
- Male and female WC and shower facilities
- Parking ratio 1:288 sq ft
- Targeting EPC rating B

258 Bath Road is prominently situated with easy access to both junction 6 and 7 of the M4 and Slough Town Centre is close by. Heathrow airport is 20 minutes away giving you truly global access.

# ON-SITE AMENITIES

### MONTHLY:

WANDERING FEAST  
FOOD MARKET

### WEEKLY:

YOGA  
FITNESS CLASS  
SHOE REPAIR  
DRY CLEANING  
BARBER

### WHAT'S ON

TUESDAY	Express Indoor Bootcamp
	Shoe Repair, Dry Cleaning, Laundry
WEDNESDAY	Express Yoga
	Beauty Therapist
THURSDAY	Express Indoor Bootcamp
	Barber Service

Typical weekly events schedule



## SOME OF YOUR NEIGHBOURS



**Lonza**



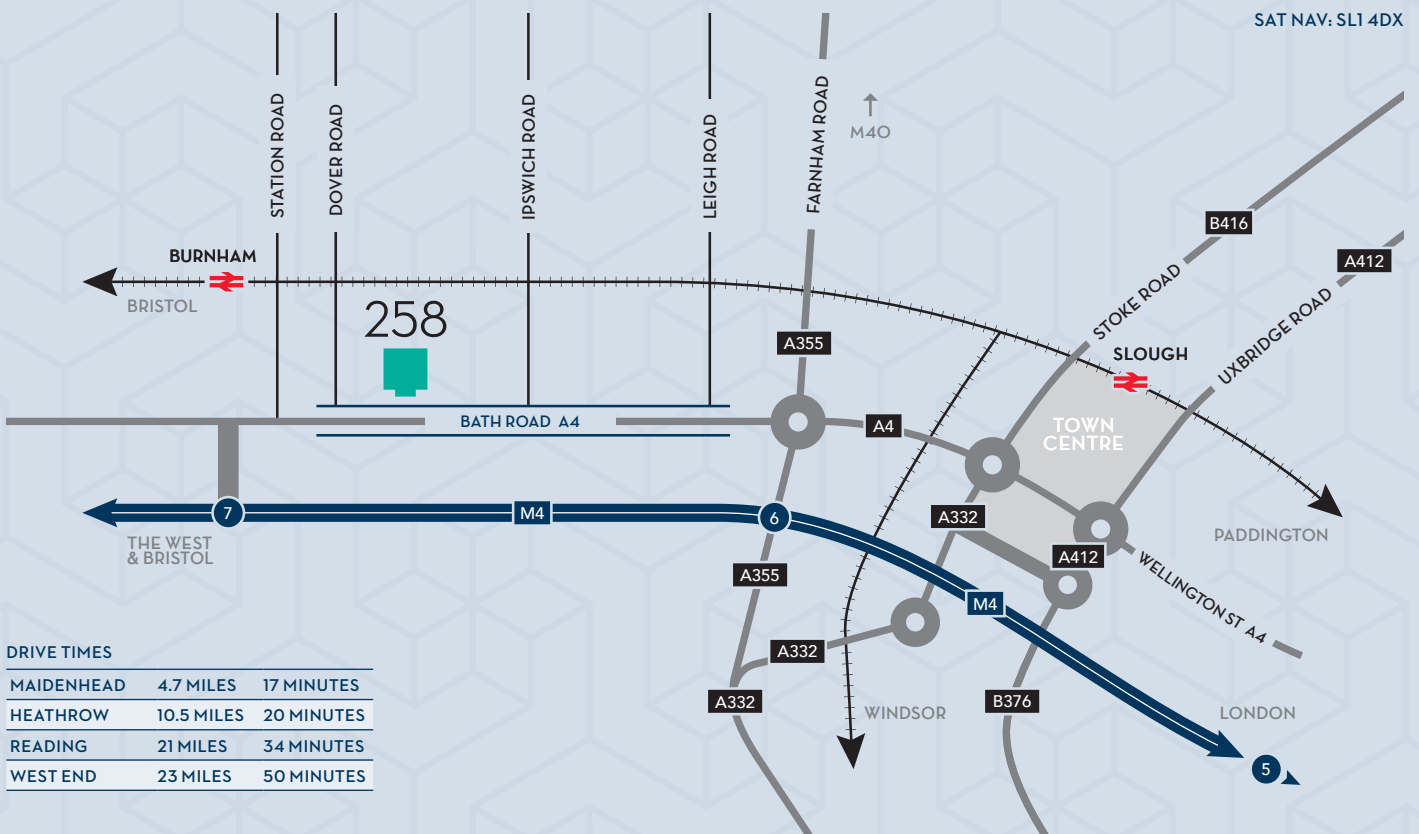
StanleyBlack&Decker

WestconGroup



HEALTH • HYGIENE • HOME

**htc**  
quietly brilliant



258BATHROADCENTRAL.COM

33 Margaret Street  
London  
W1G 0JD

savills.co.uk

020 7499 8779



**JON GARDINER**

+44 (0)20 7409 8038  
jgardiner@savills.com

**ROB PEARSON**

+44 (0)20 7299 3093  
rpearson@savills.com



**KEVIN HAWTHORN**

+44 (0)20 3130 6404  
khawthorn@hanovergreen.co.uk

**RICHARD ZOERS**

+44 (0)20 3130 6414  
rzoers@hanovergreen.co.uk

The content of this document is believed to be correct at the date of publication, however, agents Savills and Hanover Green, accepts no responsibility or liability for (or makes any representation, statement or expression of opinion or warranty, express or implied, with respect to), the accuracy or completeness of the content of this document. July 2018. S010395.

Siren | +44 (0)20 7478 8300 | sirendesign.co.uk