



## SCHEDULE OF AREAS

FLOOR	SQ M	SQ FT	DELIVERY
FIFTH (SOUTH)	465	5,000	JULY 2023
FOURTH (SOUTH)	678	7,300	AUGUST 2024
THIRD (SOUTH)	534	5,750	MARCH 2023
THIRD (NORTH)	1,115	12,000	JANUARY 2024
SECOND (NORTH)	706	7,600	JANUARY 2024
<b>TOTAL</b>	<b>3,498</b>	<b>37,650</b>	

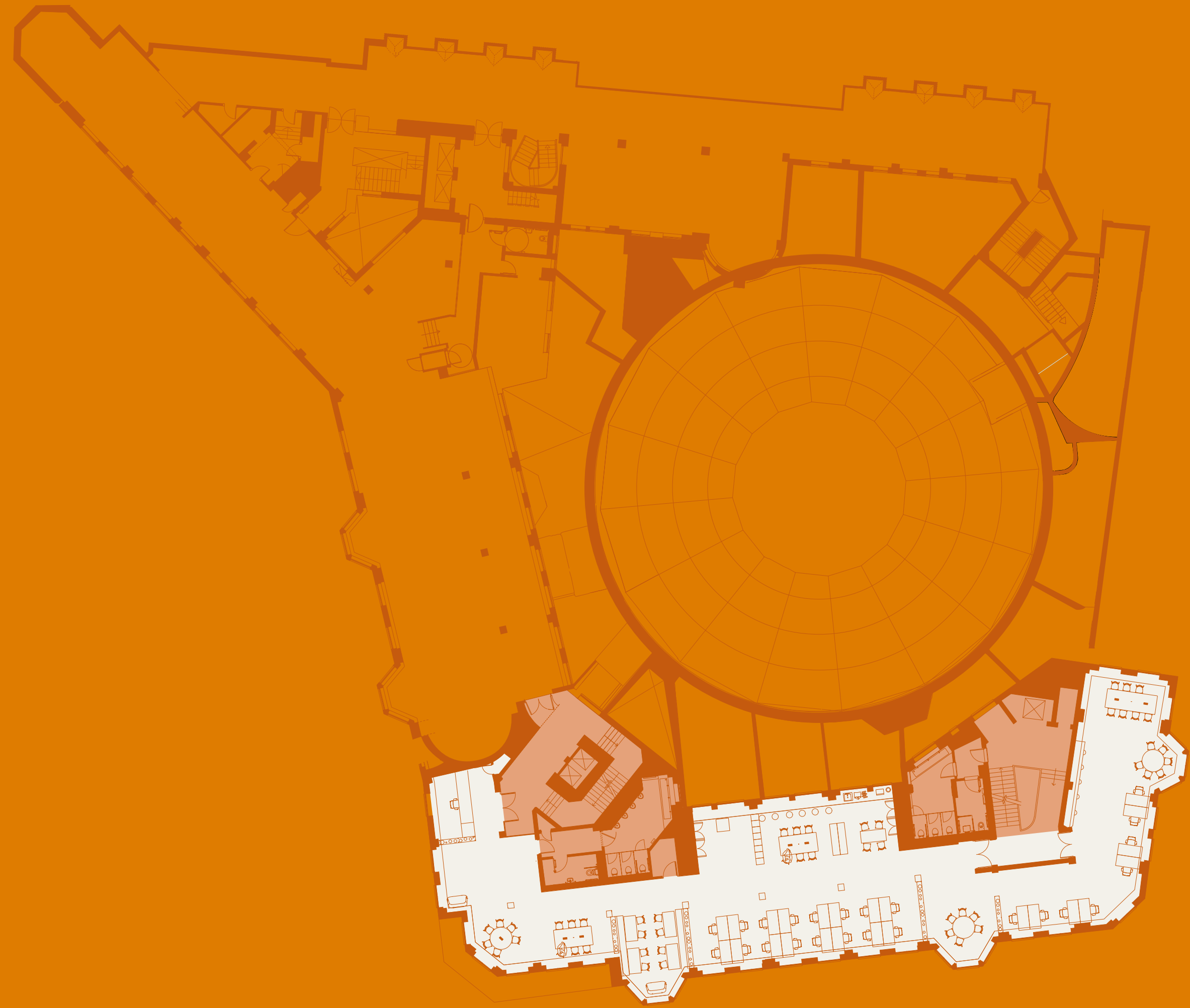
Estimated floor areas. A measured survey will be undertaken on completion of the refurbishment.



CHURCH HOUSE

# FIFTH FLOOR (SOUTH) 5,000<sup>SQ</sup> FT

DEANS YARD



KEY

□ Office

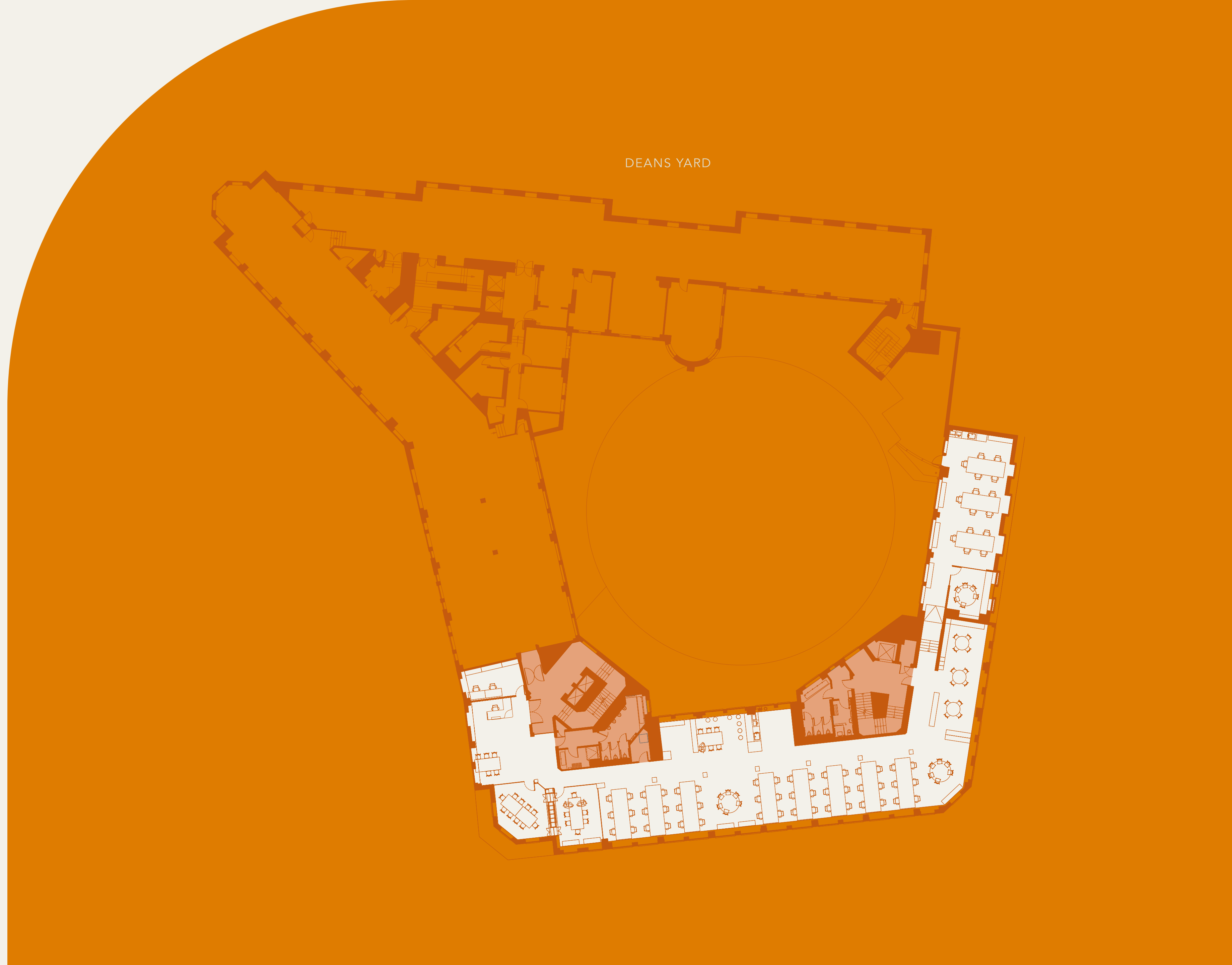
■ Core



CHURCH HOUSE

# FOURTH FLOOR (SOUTH) 7,300<sup>SQ</sup> FT

DEANS YARD



KEY

□ Office

■ Core



CHURCH HOUSE

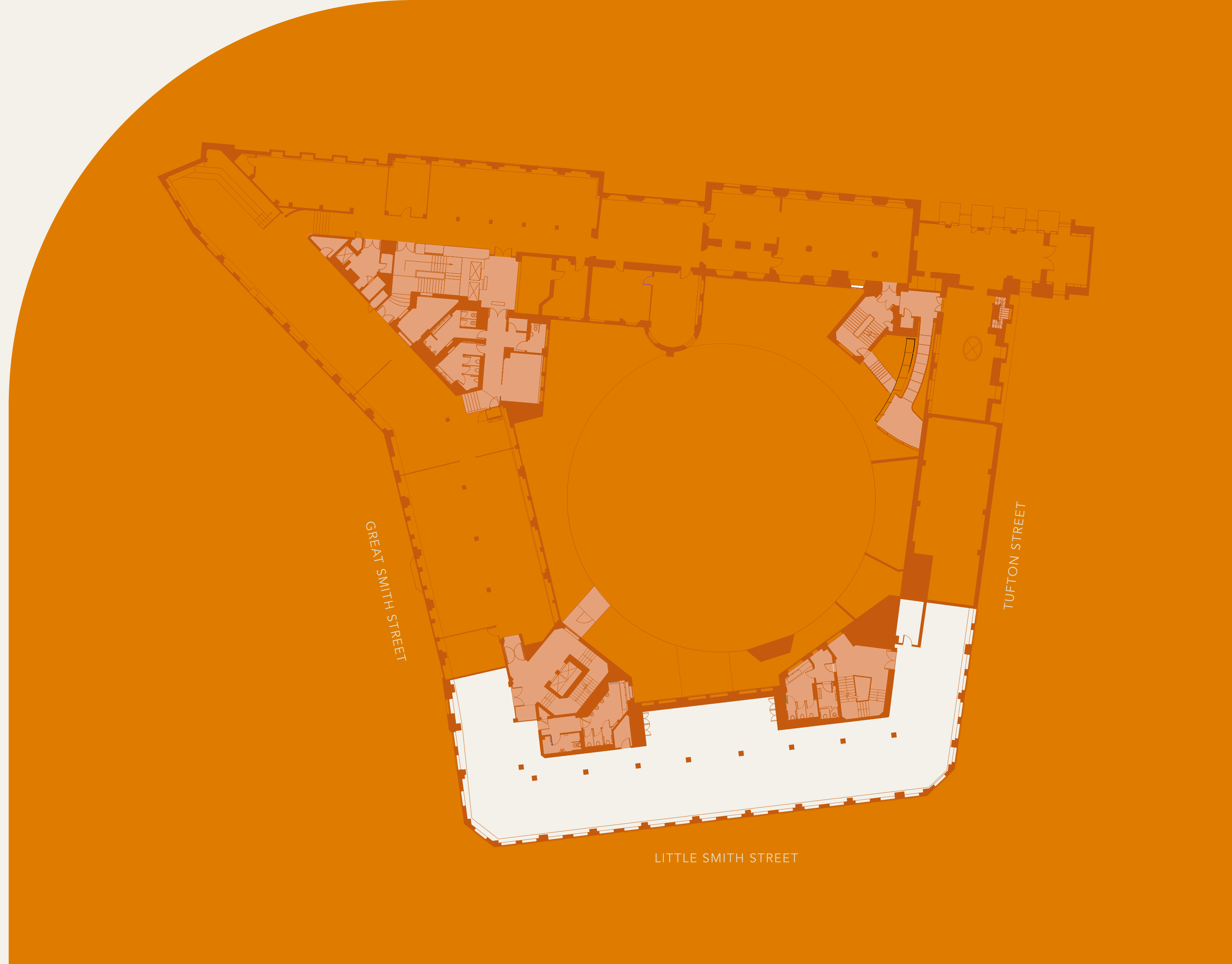
# THIRD FLOOR (SOUTH) 5,750<sup>SQ</sup> FT



KEY

Office

Core





CHURCH HOUSE

# THIRD FLOOR (NORTH) 12,000<sup>SQ</sup> FT



KEY

□ Office

■ Core

LITTLE SMITH STREET

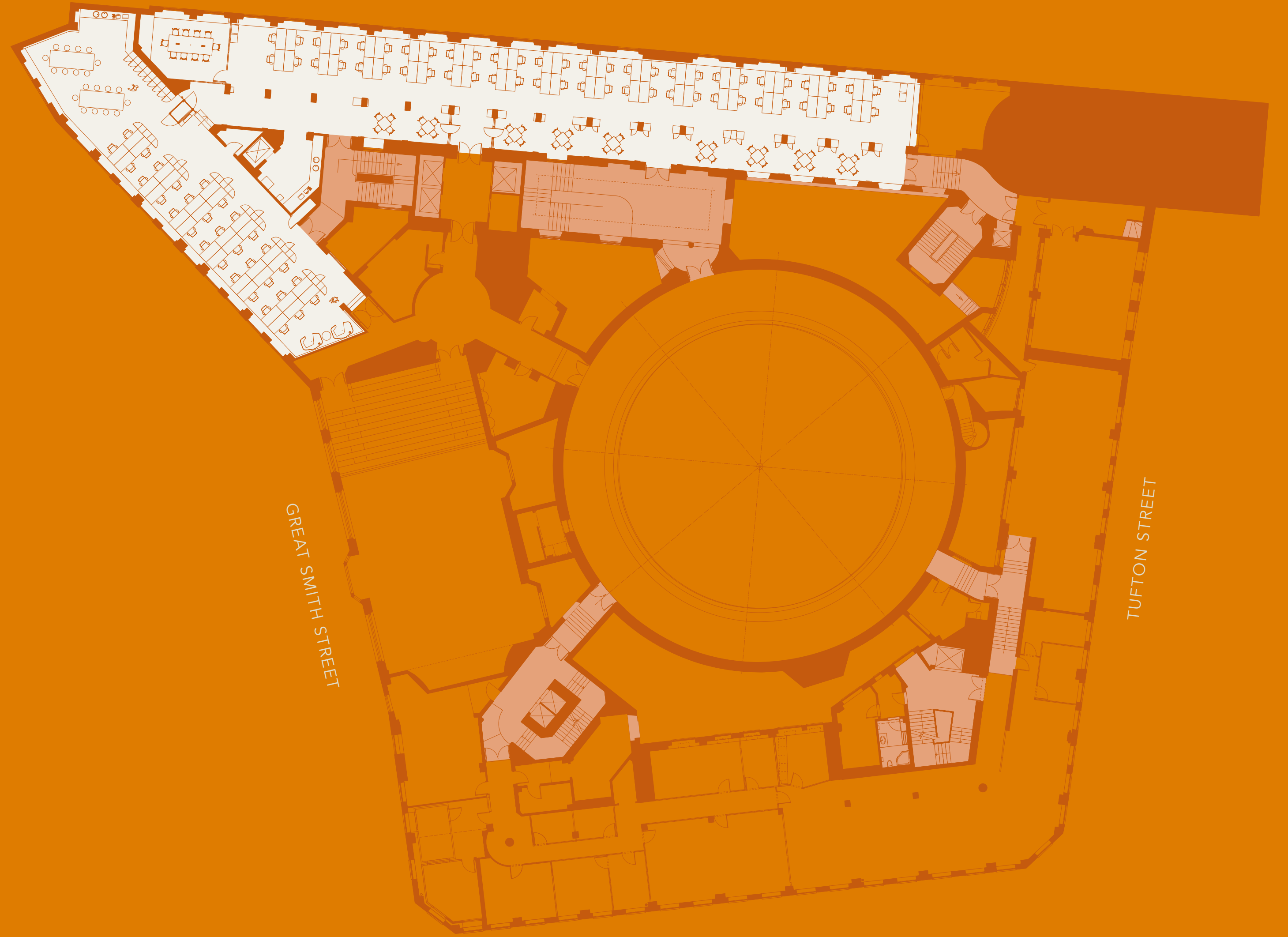
GREAT SMITH STREET

TUFTON STREET



CHURCH HOUSE

# SECOND FLOOR (NORTH) 7,600<sup>SQ</sup> FT



KEY

Office

Core

GREAT SMITH STREET

TUFTON STREET

LITTLE SMITH STREET