

# AREA PLAN

## 1 ETON STREET

RICHMOND-UPON-THAMES, TW9

### Third Floor

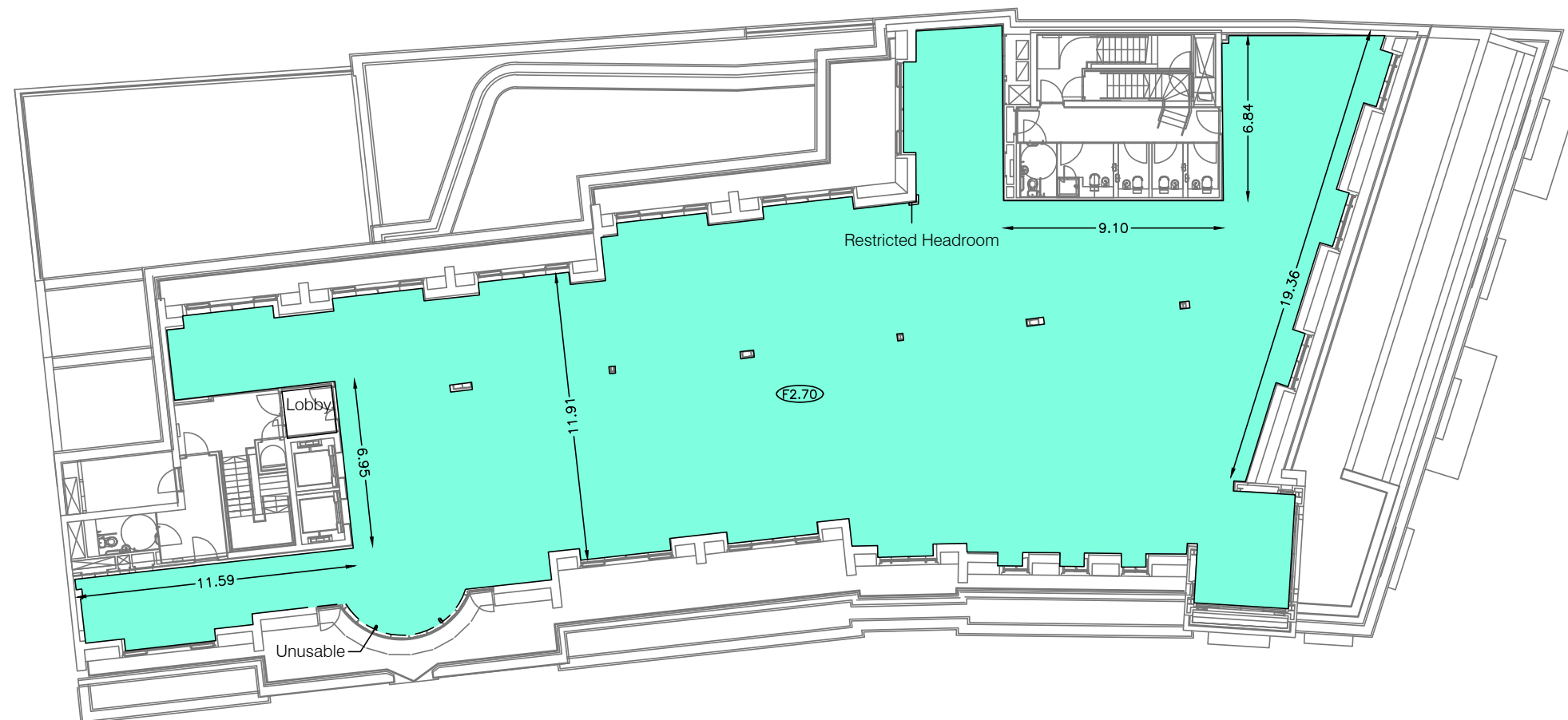
#### Net Internal Area

<span style="background-color: #00FFCC; border: 1px solid black; display: inline-block; width: 15px; height: 15px;"></span> OFFICE	670.6 sq m	7218 sq ft
--	------------	------------

**TOTAL NIA: 670.6 sq m 7218 sq ft**

The following has been EXCLUDED from the TOTAL NIA:

Lobby	4.0 sq m	43 sq ft
Restricted Headroom	0.1 sq m	1 sq ft
Unusable	<0.1 sq m	<1 sq ft
<span style="border: 1px solid black; border-radius: 50%; padding: 2px;">FX.XX</span> Floor to False Ceiling Height		



ETON STREET

**Dwg No. 27951-A3**

Issue A November 2012

Scaled for presentation purposes

**Plowman Craven**  
Regulated by RICS



T +44(0)1582 765566 W www.plowmancraven.co.uk

Condition of Site:  
Occupied  
**Vacant**  
Heavy Fit-Out  
Shell & Core  
**Under Construction**  
Cat A Fit-Out

Notes:  
This drawing complies with the 6th edition of the RICS code and indicates the extent of the areas quoted, produced to an accuracy commensurate with standard presentation scales. It is held in a scaled digital CAD format.

Dashed line denotes assumed wall line. Wall line under construction at time of survey

The background data shown in grey has been produced by a Third-Party and is shown for reference purposes only. This data may not coincide with the extents of the on-site measurements.

Revisions:  
A - Original Issue (November 2012)