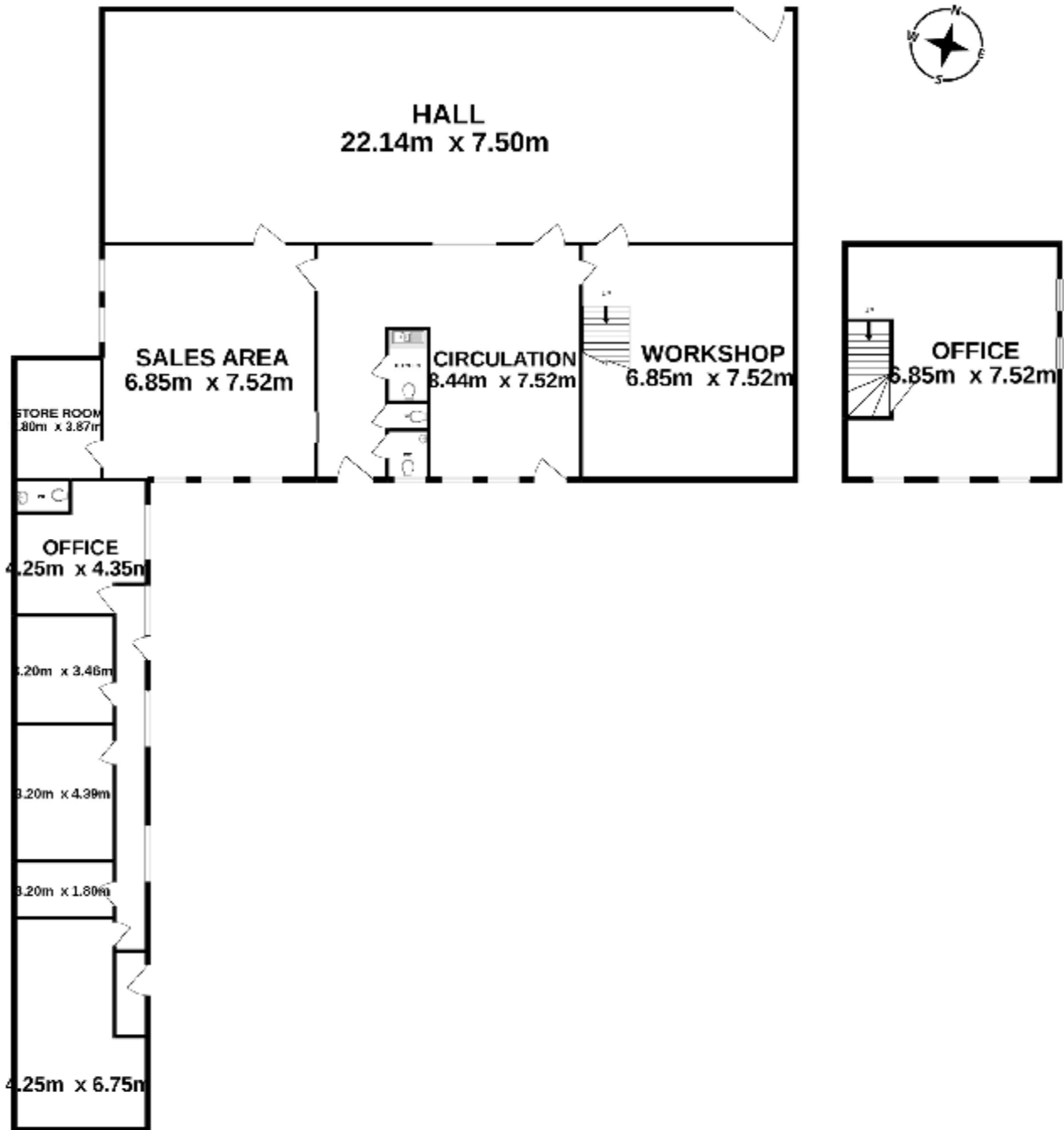


GROUND FLOOR
483.2 sq.m. approx.



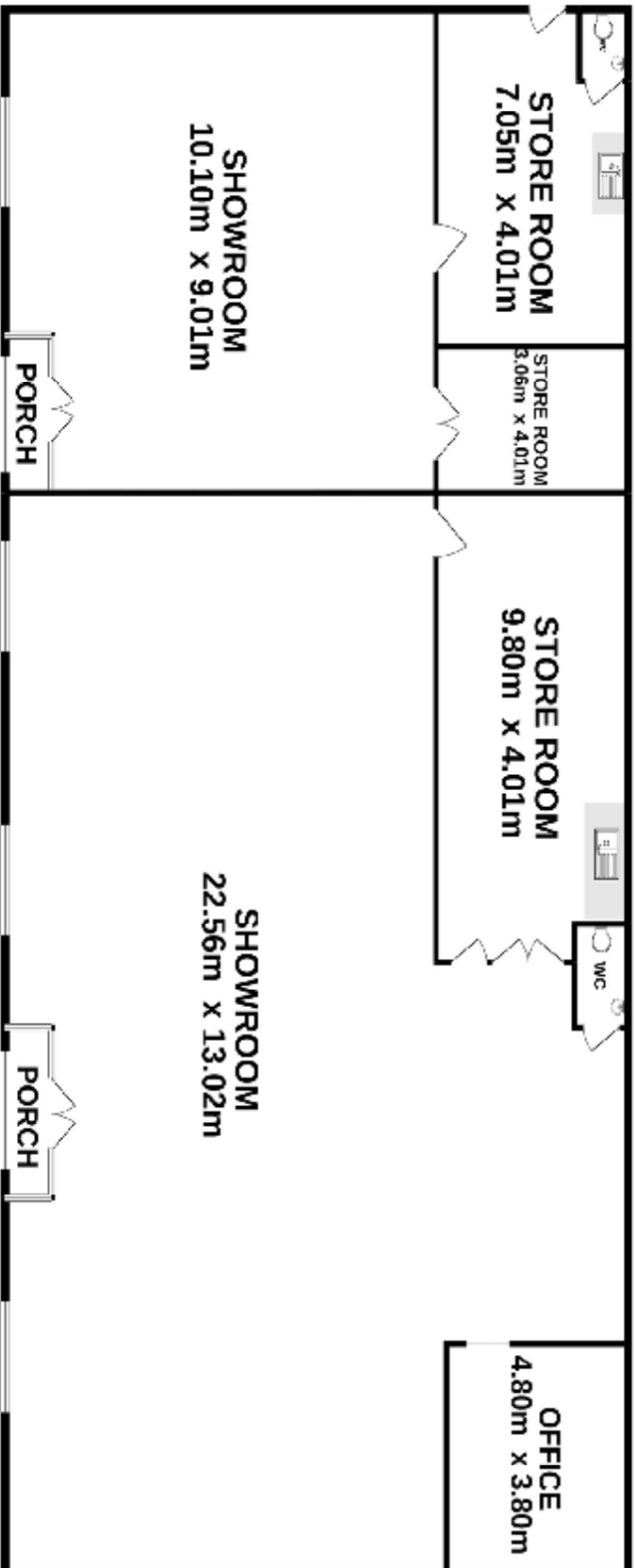
LITTLE SCHOOL

TOTAL FLOOR AREA - 483.2 sq.m. approx.

Whilst every attempt has been made to ensure the accuracy of the information contained herein, measurements of plans, windows, doors and any other items are approximate and no responsibility is taken for any error, omission or mis-statement. This plan is for illustrative purposes only and should be used as such by any prospective purchaser. The services, systems and appliances shown have not been tested and no guarantee as to their operability or efficiency can be given.
Made with Memopak 62200

GROUND FLOOR

425.1 sq.m. approx.



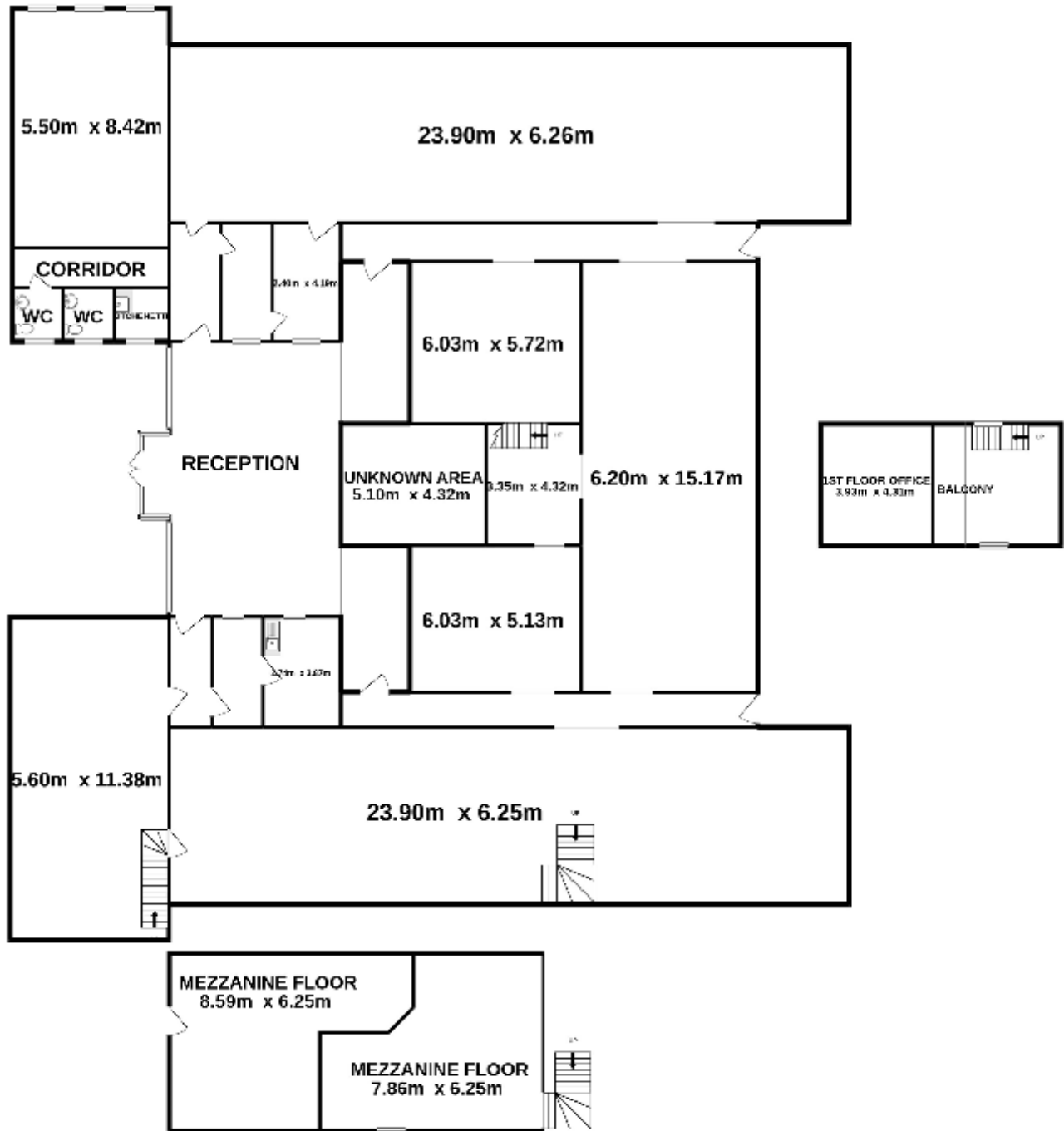
CENTRAL SHOWROOMS

TOTAL FLOOR AREA : 425.1 sq.m. approx.

All the every attempt has been made to present with the accuracy of the floor plan contained herein, measurements of sizes, extension, contents and any other details are not responsibility is taken for any error, omission or misstatement. This plan is for illustrative purposes only and should be used as such by any prospective purchaser. The services, systems and appliances shown have not been tested and no guarantee as to their operability or efficiency can be given.
Made with AutoCAD 2000



GROUND FLOOR
889.5 sq.m. approx.



OLD SCHOOL

TOTAL FLOOR AREA : 889.5 sq.m. approx.

Whilst every attempt has been made to ensure the accuracy of the floorplan contained here, measurements of doors, windows, rooms and any other items are approximate and no responsibility is taken for any error, omission or mis-statement. This plan is for illustrative purposes only and should be used as such by any prospective purchaser. The services, systems and appliances shown have not been tested and no guarantee as to their operability or efficiency can be given.
Made with AutoCAD 2000

