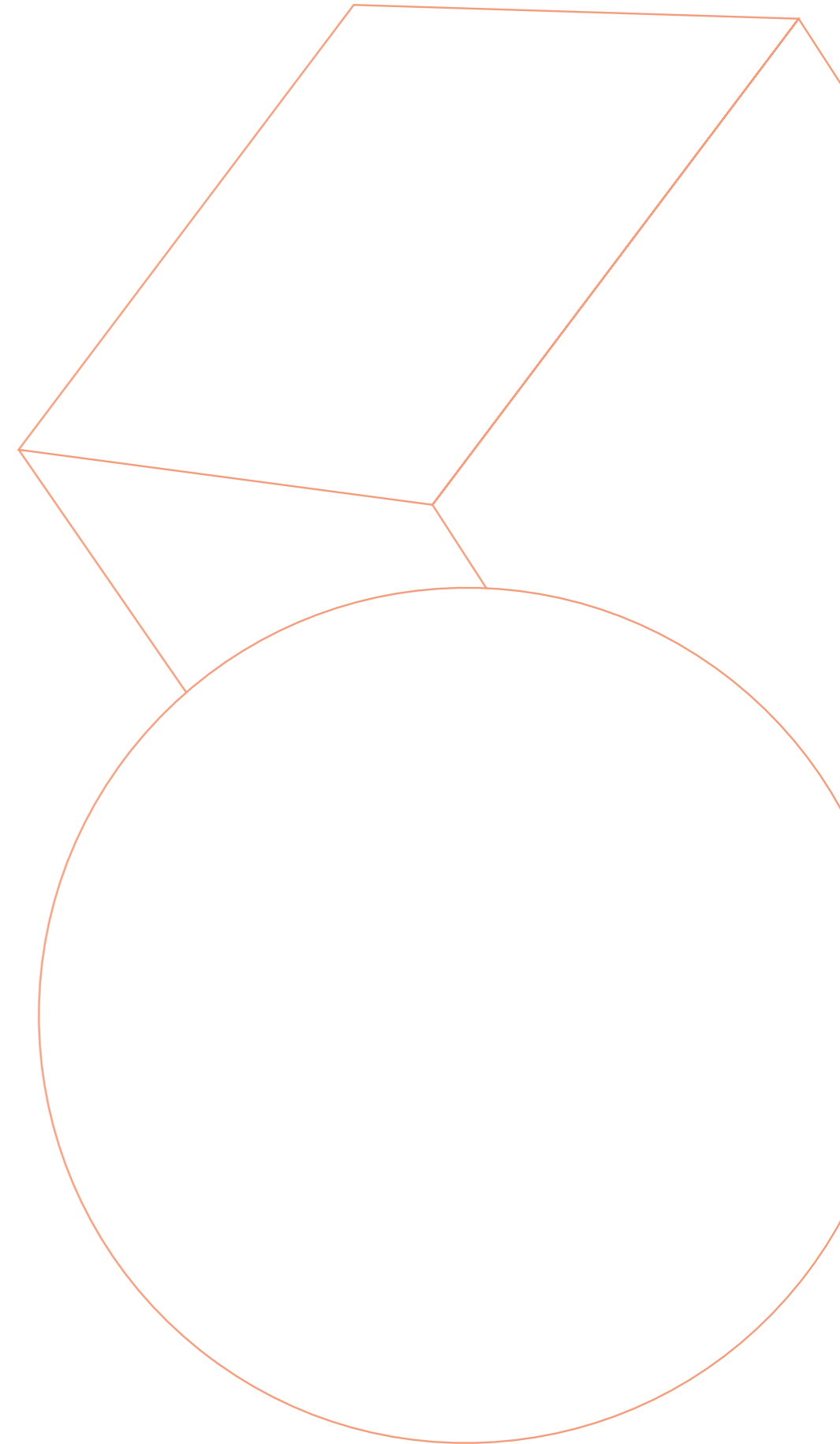


| **No.1 Circle Square**



# | No.1 Circle Square



A PLACE TO  
ENABLE THE  
EXTRAORDINARY



Welcome to Circle Square.  
Manchester's new city centre neighbourhood.  
A place where work meets life and life  
meets leisure. Where enterprising people  
and exceptional enterprises will thrive.

Circle Square will be the epicentre of a new collaborative community, at the heart of Oxford Road Corridor, Manchester's innovation district, surrounded by knowledge institutions and cultural hotspots.

Bruntwood SciTech, and joint venture partners Vita Group will together bring 1,700 new homes, 1.2 million square feet of workspace, new restaurants, bars and shops and two hotels, all centred around a stunning new city park.





# Why Circle Square?



## A campus for innovation

Located in the heart of Manchester's innovation district Circle Square is a unique campus for digital tech and engineering businesses to thrive.



## Flexible communal spaces

Communal spaces within the building such as conference facilities, meeting rooms, lounges and community areas mean that customers can get maximum efficiency from their space by having the flexibility to use these spaces.



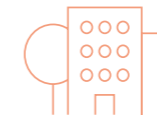
## Established events programme

Dedicated events and community programme connecting customers with like-minded companies and potential partners.



## Strategic partnerships

Enabling strategic customer partnerships, providing access to skills, talent and research through an unrivalled partner network with universities and other key Manchester stakeholders.



## An extraordinary neighbourhood

Circle Square will be home to innovative retailers, restaurants, bars and pavement cafes, all centred around Symphony Park, a beautifully landscaped space designed for socialising, entertaining, relaxing and exploring.





# The Masterplan

At Circle Square you can discover a new kind of collaborative community. From work, to leisure, retail and living, Circle Square will be your gateway to the endless opportunities that sit along Oxford Road Corridor and in the city.



**1.2 million sq ft** commercial office space



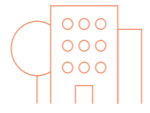
**1,100** high quality student apartments



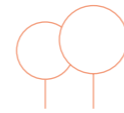
**2 hotels** with total of **300 rooms**



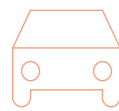
**100,000 sq ft** shops, bars & restaurants



**683** private rented sector apartments



**250,000 sq ft** public realm



**1,014** space multi-storey car park



**24/7** community



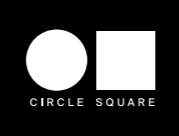
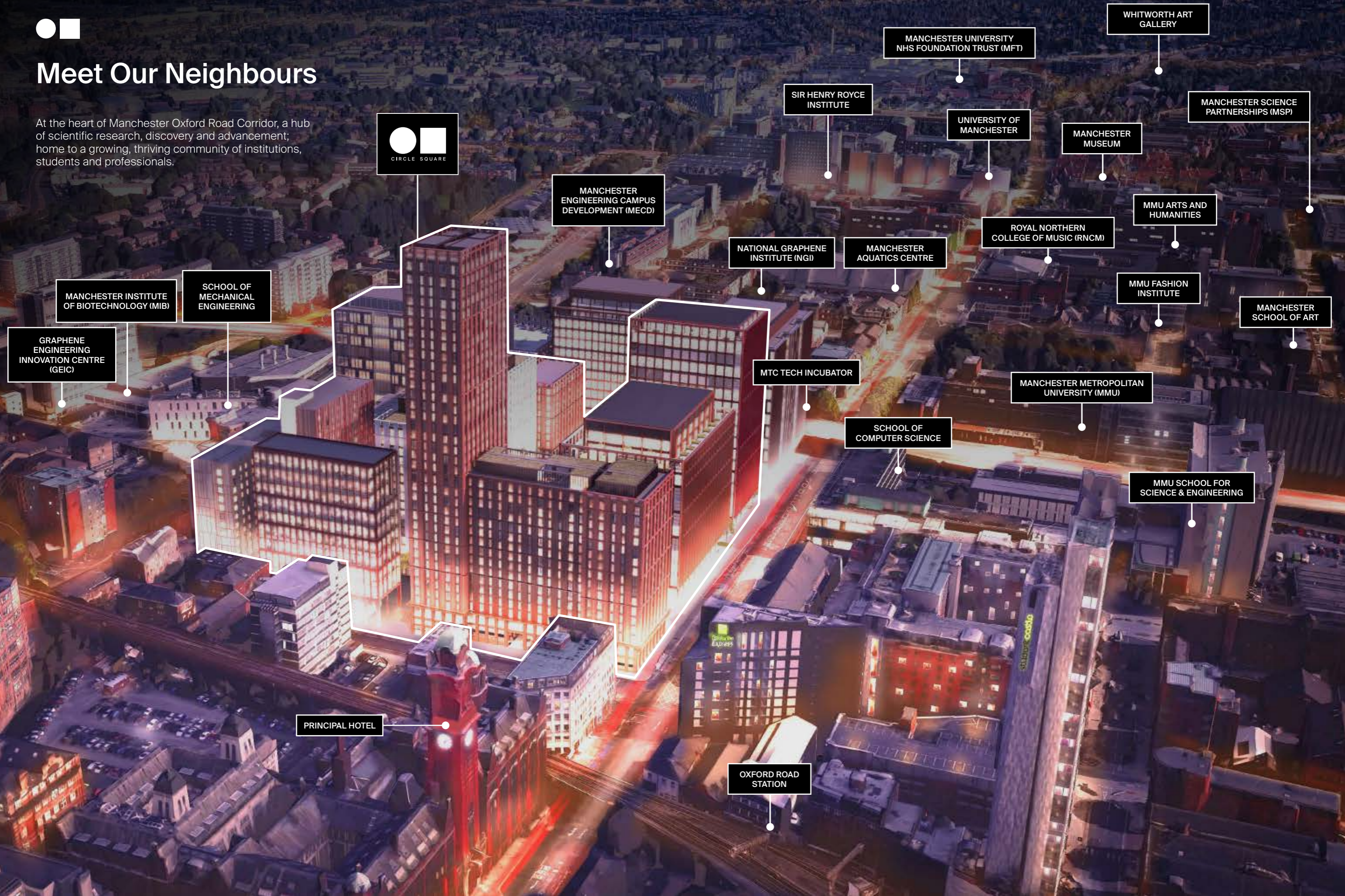
Estate management and event strategy





# Meet Our Neighbours

At the heart of Manchester Oxford Road Corridor, a hub of scientific research, discovery and advancement; home to a growing, thriving community of institutions, students and professionals.



MANCHESTER INSTITUTE OF BIOTECHNOLOGY (MIB)

SCHOOL OF MECHANICAL ENGINEERING

GRAPHENE ENGINEERING INNOVATION CENTRE (GEIC)

MANCHESTER ENGINEERING CAMPUS DEVELOPMENT (MECD)

NATIONAL GRAPHENE INSTITUTE (NGI)

MTC TECH INCUBATOR

MANCHESTER AQUATICS CENTRE

SCHOOL OF COMPUTER SCIENCE

MANCHESTER UNIVERSITY NHS FOUNDATION TRUST (MFT)

SIR HENRY ROYCE INSTITUTE

UNIVERSITY OF MANCHESTER

MANCHESTER MUSEUM

ROYAL NORTHERN COLLEGE OF MUSIC (RNCM)

MMU ARTS AND HUMANITIES

MMU FASHION INSTITUTE

MANCHESTER SCIENCE PARTNERSHIPS (MSP)

WHITWORTH ART GALLERY

MANCHESTER SCHOOL OF ART

MANCHESTER METROPOLITAN UNIVERSITY (MMU)

MMU SCHOOL FOR SCIENCE & ENGINEERING

PRINCIPAL HOTEL

OXFORD ROAD STATION



# Knowledge & Innovation

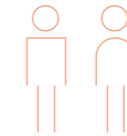
Oxford Road Corridor is a hive of knowledge, innovation and discovery.

With world class facilities spanning the district, there is an immediate access to fantastic talent, much of which flows from the city's outstanding universities. Oxford Road Corridor offers superb co-location opportunities for companies to have access to talent, university research, laboratories as well as incubation and grow-on space.



**74,000 students**

Specialist courses within engineering and digital industries as well as the Manchester School of Art, the second oldest art school in the UK



**79,000** people work here, **17%** of the City's workforce



**57%** of its activity is in knowledge intensive sectors



A **74,000+** strong workforce



**£3.6bn** It generates **£3.6bn**, per annum, 20% of Manchester's economy over the last 5 years



**Green** It's a leader in green transport planning



**200** new products and services developed in the corridor



Generates c. **20%** of the city's economic output

“

For employers, there is no talent pool like Oxford Road Corridor. We are a net importer of skills into the city.

**Professor Jean-Noël Ezingard**

Deputy Vice-Chancellor at Manchester Metropolitan University



## Culture & Lifestyle

Manchester is recognised for its contributions to art and popular culture, and there is nowhere like the Oxford Road Corridor for experiencing it all.



“

Manchester Museum is one of the most successful and popular museums in the country and attracts an increasingly diverse audience. One of the things that makes it special is its location on the Oxford Road Corridor, a stone's throw from the city's most dynamic cultural and scientific institutions.

**Esme Ward**  
Director of Manchester Museum

Stan the T-Rex at Manchester Museum



# A Connected Hub

Just a short walk from two of the city's busiest train stations, Circle Square sits on one of the best connected public transport routes in the North of England.



## ON FOOT

Oxford Road Station	4 mins
St Peter's Square	8 mins
Piccadilly Station	10 mins
Deansgate Station	12 mins
Spinningfields	14 mins
Market Street	15 mins



## METROLINK

Manchester Airport	40 mins
Media City	20 mins
East Didsbury	30 mins
Ashton-under-Lyne	30 mins
Bury	25 mins
Altrincham	20 mins



## RAIL

London	2 hrs 4 mins
Leeds	50 mins
Liverpool	33 mins
Birmingham	1 hrs 30 mins
Edinburgh	3 hrs 30 mins
Newcastle	1 hr 30 mins



## BICYCLE

'Dutch' cycle lanes have been introduced to Oxford Road, coupling safer, faster bicycle journeys. No.1 Circle Square will include 200+ secure bicycle spaces.



## CAR

Circle Square features its own on site multi-storey car park... and is also a short drive from the main city ring roads and will feature a 1,014-space car park.



## AIR

Direct flights from 225 destinations from Manchester Airport



## NUMBER OF PASSENGERS PER ANNUM

Piccadilly Station	25,792,000
Oxford Road Station	7,961,843
Victoria Station	7,630,480
St Peter's Square	500,000





### Restaurants / Bars

- |                   |                       |
|-------------------|-----------------------|
| 01 Fumo           | 10 YES                |
| 02 Gorilla        | 11 Rudy's             |
| 03 Nando's        | 12 Albert Schloss     |
| 04 Hatch          | 13 Revolucion de Cuba |
| 05 Refuge         | 14 Dirty Martini      |
| 06 Five Guys      | 15 Wood               |
| 07 Navarro Lounge | 16 Street on 1st      |
| 08 Mowgli         | 17 The Gas Works      |
| 09 Brew Dog       | 18 Indian Tiffin Room |

### Cafes / Coffee Shops

- |                         |                        |
|-------------------------|------------------------|
| 01 Ditto Coffee         | 07 Friska              |
| 02 Nudo Sushi Box       | 08 Pret a Manger       |
| 03 Leaf                 | 09 Takk                |
| 04 Chango's Burrito Bar | 10 R&V                 |
| 05 Starbucks            | 11 Caffè Nero          |
| 06 Costa Coffee         | 12 The Eighth Day Cafe |

### Points of Interest

- |                               |                           |
|-------------------------------|---------------------------|
| 01 Palace Theatre             | 06 HOME                   |
| 02 Dog Bowl                   | 07 RNCM                   |
| 03 The Deaf Institute         | 08 Manchester Academy     |
| 04 Manchester Aquatics Centre | 09 Bridgewater Hall       |
| 05 Manchester Museum          | 10 Manchester Art Gallery |

### Hotels

- |                        |                       |
|------------------------|-----------------------|
| 01 The Midland         | 04 Crowne Plaza Hotel |
| 02 The Principal       | 05 Staybridge Suites  |
| 03 Holiday Inn Express |                       |

### Shops

- |                      |               |
|----------------------|---------------|
| 01 Tesco Express     | 04 Co-op      |
| 02 Sainsbury's Local | 05 Utility    |
| 03 Tesco Express     | 06 Blackwells |



### Transport & Connectivity

- 20 minutes by car** to Manchester Airport
- Six car parks** within a 10 minute walk
- Europe's best** connected public transport route
- Direct connections** to all major rail networks
- 10 minutes walk** to Piccadilly Train Station
- 2 minutes walk** to Oxford Road Train Station
- 8 minutes walk** to St Peter's Square Metrolink Interchange

St Peter's Square provides direct routes to Victoria Station, Piccadilly Station, Manchester Airport, East Didsbury, Altrincham, MediaCityUK, Ashton-under-Lyne, Bury and Rochdale Town Centre.



## Innovative and Creative Workspace

Available for occupation from November 2020, offering flexible office space, including designated coworking areas and small studios as well as a ground floor with open plan retail area.



Surrounded by shops, bars, restaurants and a hotel



Bespoke annual arts & cultural events



Business support & community events



**150** person auditorium conference centre



Platinum WiredScore rating



Overlooking Symphony Park



Secure storage for over **386+** bikes



**42** showers, with changing rooms, lockers and drying rooms



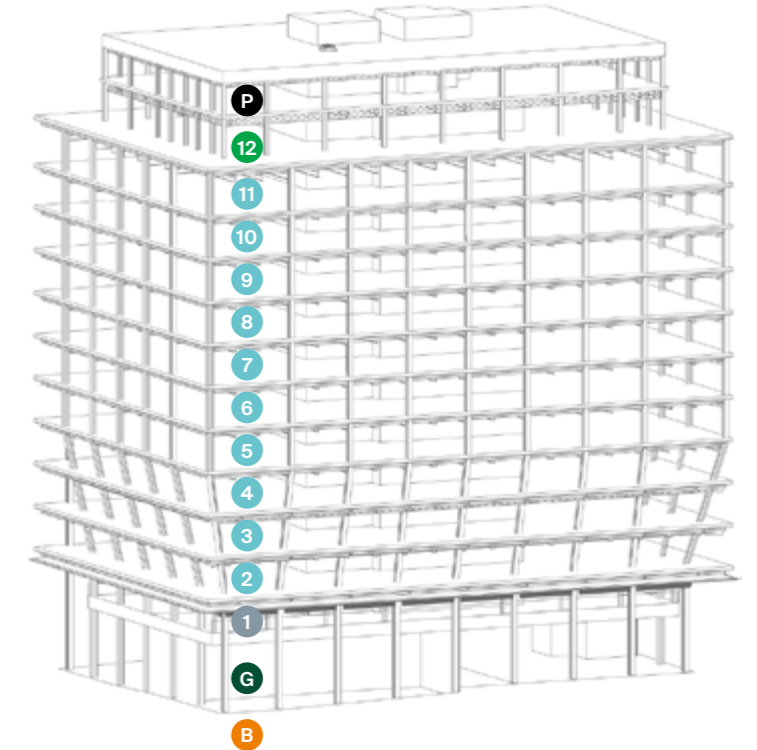
**24/7** access with full concierge and business support





# Spaces That Work Around You

## No.1 Circle Square



No.1 Circle Square		Sq ft	Sq m
P	Plant	-	-
12	12th Floor + Terrace	10,342	961
11	11th Floor	19,119	1,776
10	10th Floor	19,118	1,776
9	9th Floor	19,111	1,775
8	8th Floor	19,111	1,775
7	7th Floor	19,102	1,775
6	6th Floor	19,102	1,775
5	5th Floor	19,089	1,773
4	4th Floor	18,864	1,752
3	3rd Floor	18,875	1,753
2	2nd Floor	18,874	1,753
1	1st Floor	12,158	1,130
G	Ground floor (Retail)	10,718	996
G	Ground floor (Reception)	3,293	306
B	Basement (Retail)	8,554	795
<b>Total</b>		<b>235,430</b>	<b>21,871</b>



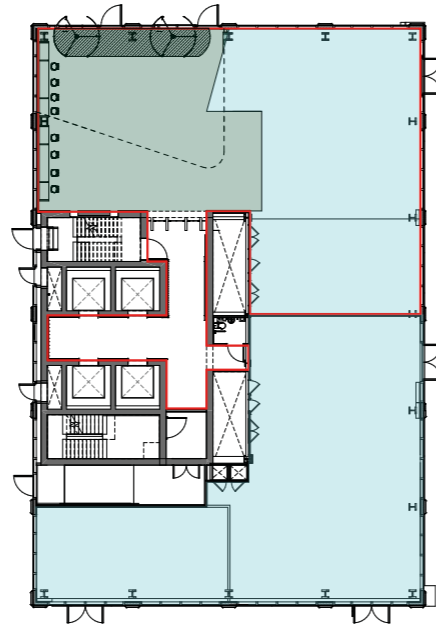
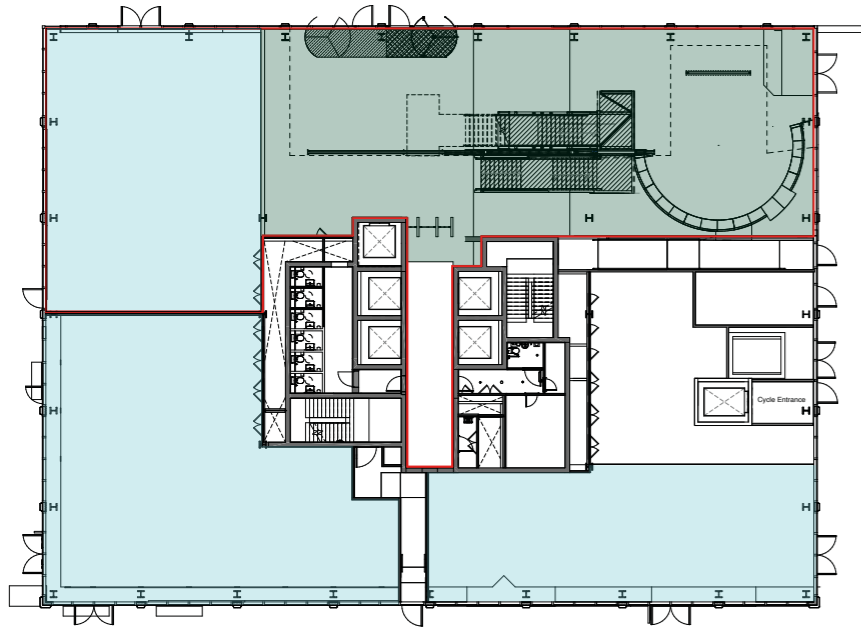
No.1 Circle Square: Reception



# Basement, Ground Floor & First Floor Plans

No.1 Circle Square

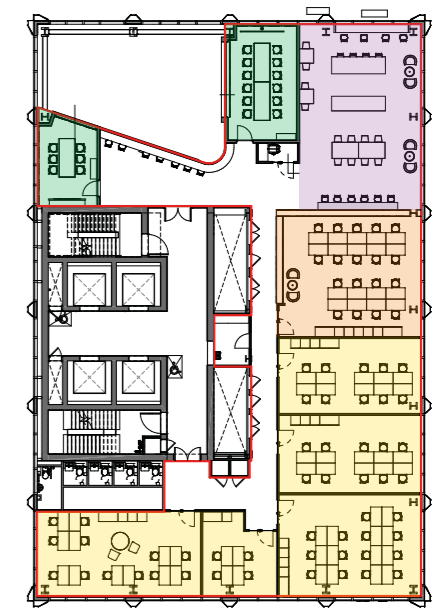
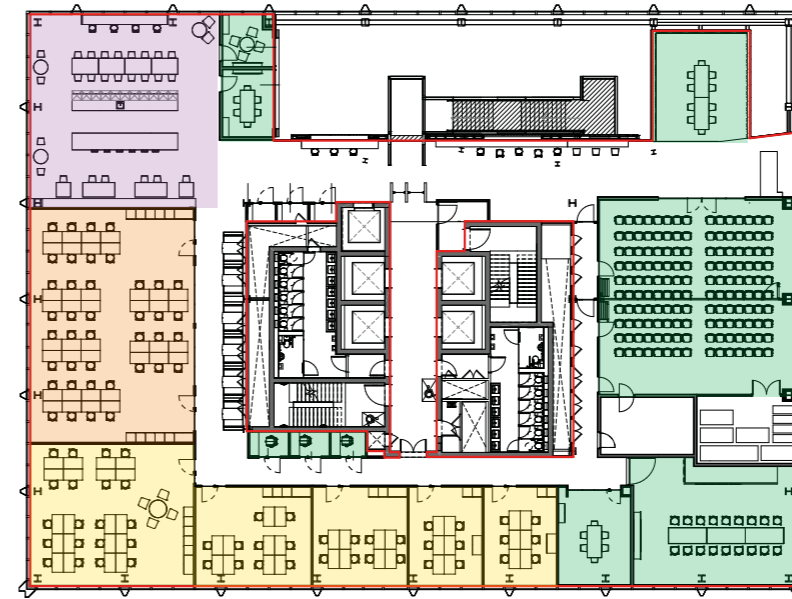
No.2 Circle Square



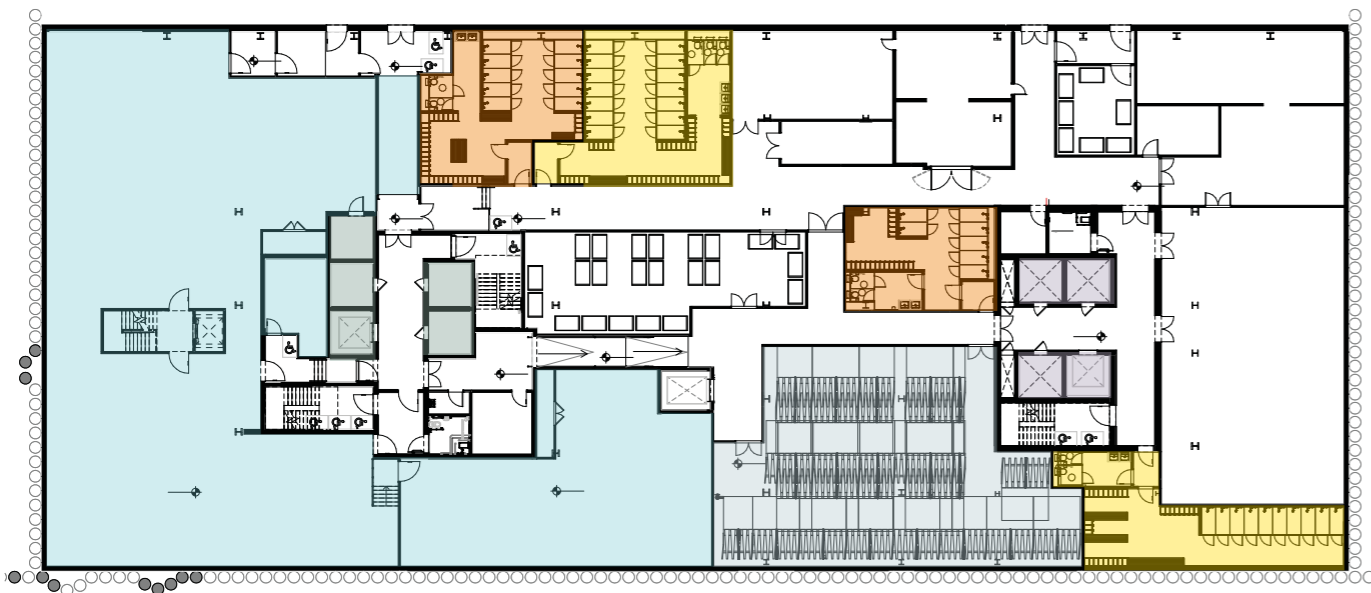
Ground Floor

No.1 Circle Square

No.2 Circle Square



First Floor



Basement

## KEY (GROUND & FIRST FLOORS)

- Retail / Leisure
- Meeting / conference rooms & phone booths
- Lounge
- Coworking Space
- Serviced Space
- Reception & community space

## KEY (BASEMENT)

- Retail / Leisure
- Female showers & changing rooms
- Male showers & changing rooms
- Cycle store
- Lift access to No.1 Circle Square
- Lift access to No.2 Circle Square

## TECHNICAL SPECIFICATIONS

- Fully air-conditioned
- 8m double height reception
- Typical floor to ceiling height of 3.8m with an exposed ceiling finish with exposed soffit
- 1:8 sq m occupancy ratio, with the ability to increase to 1:6 sq m
- Energy efficient LED lighting
- Full access raised floor with void of 200mm
- BREEAM "Excellent"
- Floor to ceiling glazing to all elevations
- Typical upper floor plates up to 19,126 sq ft
- Exposed steel frame design



No.1 Circle Square: Ground floor events space



# Extraordinary Office Space That Means Business

At Circle Square, our commercial buildings have innovative and flexible space that can be tailored to your business needs. From coworking and serviced space to larger leased space, there's a variety of spaces designed to allow businesses to flourish at Circle Square.

## MEETING ROOMS

Meeting rooms at Circle Square range from a 4-180 person conference event space including a 14 person boardroom equipped with the latest technology. If you are hosting an event, the spaces are fully personalisable. The ground floor also features a state of the art digital art projection wall can also that can be used for private events.

## COWORKING

Our coworking spaces, give you the ultimate in high-quality, flexible workspace.

Simply choose from a hot desk or dedicated desk in our vibrant environments to power your productivity.

### Ideal for:

- Freelancers
- Start-ups
- Mobile workers

## SERVICED SPACE

A serviced office provides maximum flexibility. With a simple pay per desk rate and sign-up for as little as six months, as your needs change so too can your office. Whether you need private space for two people with all the advantages of a professional support team, or a larger space to expand for a temporary period, serviced offices are the solution. Circle Square also provides coworking desks that interface with the serviced space, offering businesses the option to expand without moving office, available on a per desk basis.

2-20 person studio office space

All have access to natural light, floor to ceiling glazing

Local lounges providing refreshments

Cafe facilities on the ground floor

### Ideal for:

- Companies 2+
- Entrepreneurs, start-ups and SMEs
- Short term space needs from project teams

## MADE & MANAGED

Made & Managed takes the hassle out of managing your office and lets you put the focus back onto running your business. We design, create and fully manage your offices, all for a single monthly fee. You select a bespoke package of services and a fit-out that is reflective of your brand and personalised to the way you work.

### Ideal for:

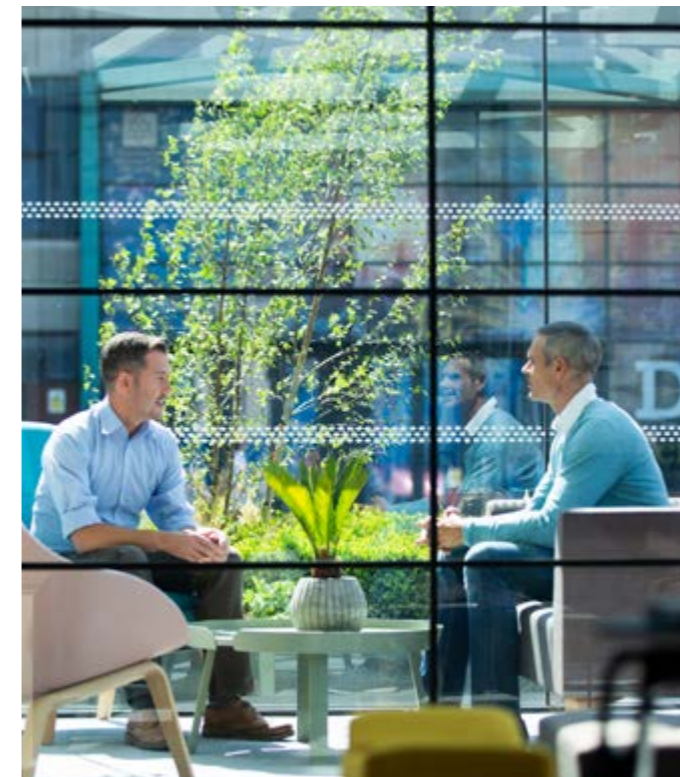
- Companies from 20+ SMEs
- Ready to move in (turnkey) requirements
- Short term space needs for project teams
- Satellite offices

## LEASED OFFICE

Lay the foundations for success and make your space your own with a leased office. Our flexible leases help you to choose the strategy that's right for your organisation. A leased office is the perfect choice for the organisation that likes to take full control from the design and fit-out to your additional operational services.

### Ideal for:

- Companies of any size that want to design and manage their own unique office space.





# Support for your Business, Events & Community at Circle Square

Everything you need to help your business grow – tailored business support, a vibrant events programme and a collaborative community.

Book a 1-1 with our Innovation team to get specialist, tailored advice to support the development of your commercial strategy; help you find a mentor or investment; signposting to peer group coaching, webinars, training workshops and networking sessions, or connections into our unrivalled public, private, academic, clinical partner network to help you access new markets.

Our vibrant events programme connects you to over 500 science and tech businesses from across the Bruntwood SciTech network to experts in tax, PR, marketing and recruitment and also includes a series of sector-specialist seminars; ideal for networking and identifying new opportunities for collaboration. While, our calendar of social and wellbeing events (including those held at Symphony Park) includes running clubs, supper clubs, mindfulness and yoga sessions - a great way to make new connections as well as recharge body and mind.

You'll also have full access to state-of-the-art conference and events facilities, communal business lounges, meeting rooms and podcast studio at neighbouring No.1 Circle Square.

The results\* of being based in the Bruntwood SciTech network speak for themselves:


- 2/3 of businesses benefit from being located in the Bruntwood SciTech network
- Over 60% of businesses say that their Bruntwood SciTech location has the infrastructure needed to help them grow their business
- Over 60% of businesses say their Bruntwood SciTech location gives them access to the skills their business needs
- 40% of businesses in the Bruntwood SciTech network have grown employment in the last 12 months
- A quarter (26%) of businesses in the Bruntwood SciTech network have raised investment in last 12 months

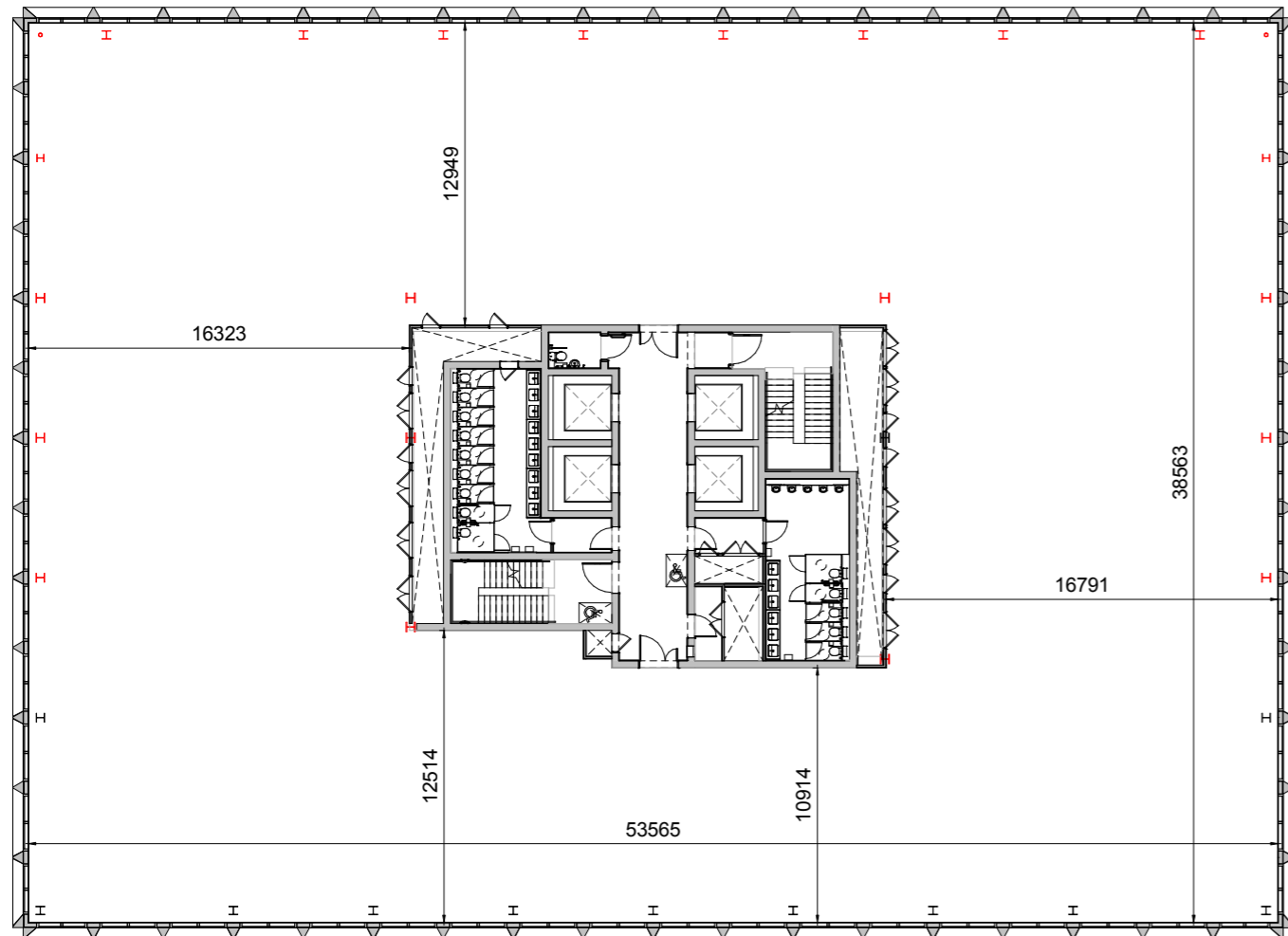
\*An independent survey with over 400 Bruntwood SciTech customers in February 2020





# Typical Upper Floor Plan

 **19,216 sq ft** total size of the floor space





Circle Square: Symphony Park



# Symphony Park

Circle Square will be the home to the first and largest new city park in Manchester for generations, with over 100 semi mature trees, 1000's of flowers, plants and shrubs. Surrounded by shops, restaurants, bars and cafés, this rare and valuable green space in the city is a place where people can relax, shop and play.

RELAX





## Retail & Leisure

At Circle Square you'll find the most interesting places to eat and drink. The best places to shop. The most innovative flavours and the latest trends.

EAT. DRINK. SHOP.



# An Extraordinary Neighbourhood

Through a curated programme of events and a unique combination of shopping, eating and drinking, Circle Square will be a hive of activity, day and night, all year round.

EVENTS &  
COMMUNITY





# Hatch

Circle Square is home to Hatch, a creative urban village for quirky independents and new concepts.

Hatch features over 30 food, drink and retail spaces, as well as rooftop terraces, creative studio space and plenty of communal space. With regular events, live music and activity, Hatch is Manchester's most intriguing place to eat, drink, shop and experience.



# NEIGHBOURHOOD



# Bruntwood SciTech

The UK's leading property provider dedicated to the growth of the science and technology sector, creating a network of thriving innovation districts.

Circle Square is part of the Bruntwood SciTech network of innovation districts. A vibrant community of over 500 of the UK's most innovative and disruptive science and technology businesses.

Our sector-specialist clusters across Manchester, Leeds, Liverpool and Birmingham provide you with the support your business needs to form, scale or grow. Connecting you to opportunities to access finance, talent and markets through our unrivalled public, private, academic and clinical partner network and fostering collaboration and connections with companies based at the neighbouring Manchester Science Park and Citylabs.





## Who's already here: **Hewlett Packard Enterprise**

Global tech company relocates to Circle Square.

Hewlett Packard Enterprise (HPE) will move almost 300 of its UK employees into No.1 Circle Square when it opens in Summer 2020, having secured a 20,000 sq ft pre-let on the 7th floor. In early 2019, HPE relocated some of its UK employees to an interim office at Manchester Technology Centre.

Greater Manchester is the UK's second largest creative, digital and technology hub and a hotbed for collaboration and innovation. Since developing the world's first stored program computer, Greater Manchester has pioneered computer science, software programming and development, which makes it the ideal business location for world leading brands like HPE.



Circle Square is a really attractive destination for us because of the ambition of the project, to bring together a diverse set of organisations. The location was huge in our decision, we really wanted to be right in the heart of a vibrant city that has diversity and Manchester really is that city.

**Marc Waters**

Managing Director, UK, Ireland, Middle East & Africa,  
Hewlett Packard Enterprise





## Who's already here: **Tootoot**

Tootoot are located in the Tech Incubator at Circle Square, a space ideal for early staged data, science and tech companies. The Tech Incubator provides access to specialist support that your business needs to grow.

Tootoot's award-winning software makes it easier for children, young people and adults to talk about their mental health and wellbeing by providing a safe and trusted way to speak up. For Tootoot the Tech Incubator provided a solution to help the company grow and since moving in the team has nearly doubled in size and they have just completed a second fundraising round.

The Tech Incubator at Circle Square allows businesses like Tootoot to grow and collaborate in an unrivalled location in the city.



We absolutely love being located at Circle Square. Being part of the Bruntwood SciTech community has given us huge access to talent, investment opportunities and a business support programme.

**Michael Brennan**  
Founder, CEO, Tootoot

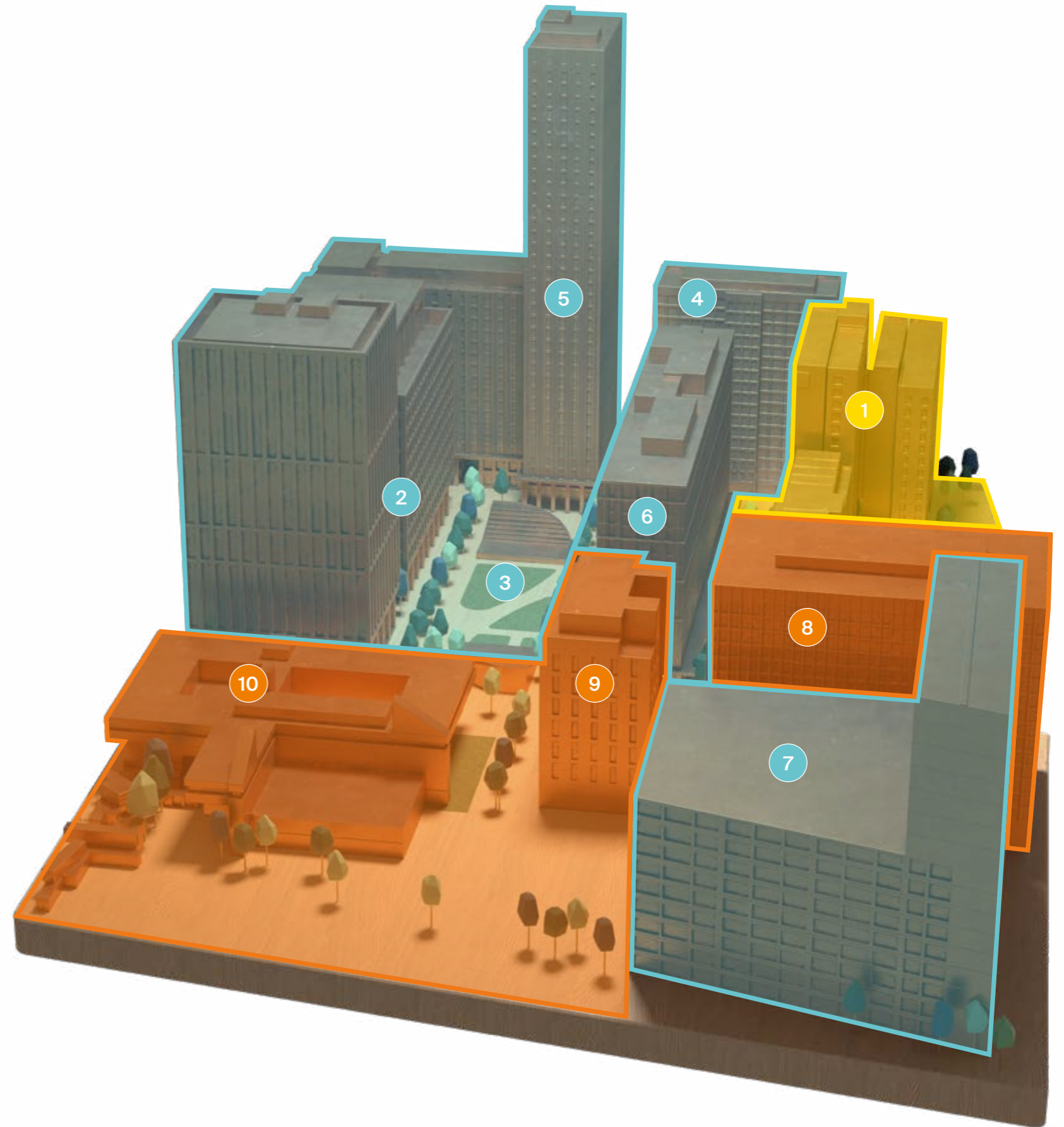




# The Phases

Circle Square will be delivered in three phases with nearly two thirds in place by November 2020, including over 1,000 new homes, 400,000 sq ft offices, multi-storey car park & hotel, plus shops, restaurants, bars and more.

PLOT	COMPLETION
<b>Phase 1</b>	
1 Vita Student - 716 high quality serviced apartments	Complete
<b>Phase 2</b>	
2 No.1 & No.2 Circle Square - Approximately 400,000 sq ft of commercial workspace	November 2020
3 Near completion of site wide public realm including the green and two pavilion buildings	November 2020
4 Vita Student - 384 high quality student apartments	Complete
5 Vita Living - 417 private rented sector apartments	June 2021
6 Vita Living - 266 private rented sector apartments	November 2020
7 Multi-storey car park and hotel (1,014 car park spaces / 150 bed hotel)	August 2020
<b>Phase 3</b>	
8 No.3 Circle Square - approximately 224,000 sq ft commercial workspace	2022
9 Boutique hotel (later phase of development)	TBC
10 Currently Manchester Technology Centre. Earmarked for approximately 480,000 sq ft of commercial floorspace	TBC





---

## Contact Details:

**bruntwood**  
SciTech

**Bradley Topps**

bradley.topps@bruntwood.co.uk  
07983 859 316

**Matthew Lee**

matthew.lee@bruntwood.co.uk  
07810 770 691

**Will Hughes**

will.hughes@bruntwood.co.uk  
07384 216 600



**David Porter**  
david.porter@knightfrank.com  
07979 530 435



**Chris Mulchay**  
Chris.Mulchay@eu.jll.com  
07967 500 413



**James Evans**  
jevans@savills.com  
07870 999 665

**Mark Bamber**

mark.bamber@knightfrank.com  
07776 763 317

**James Devaney**

james.devany@eu.jll.com  
07525 582 901

**Richard Lowe**

RCLowe@savills.com  
07870 999 774

---

@circlesquaremcr

@circlesquaremcr

@circlesquaremcr

@circlesquaremcr

[circlesquaremanchester.com](http://circlesquaremanchester.com)

---

In line with the Misrepresentation Act 1967, Unfair Contract Terms Act 1977 and The Property Misdescriptions Act 1999, Bruntwood Science Limited gives notice that (1) These particulars are a general outline only, for the guidance of prospective purchasers or customers, and do not constitute the whole or any part of an offer or contract. (2) Bruntwood Science Limited cannot guarantee and accepts no liability whatsoever for the accuracy of any description, dimensions, references to condition, necessary permissions for use and occupation and other details contained herein and prospective purchasers or tenants must therefore not rely on them as agent advisor or other representative statement of fact or representations and must satisfy themselves as to their accuracy. (3) No employee of Bruntwood Science Limited has any authority to make or give any representations or warranty or enter into any contract whatever in relation to the property. (4) Bruntwood Science Limited will not be liable, in negligence or otherwise, for any loss arising from the use of these particulars. (5) Space planning contained in this brochure is indicative only and may require modifications to the building design. (6) All floor plans are not to scale and are for identification purpose only. (7) All CGIs are indicative of the building and site only and are not an exact representation of the completed building.

