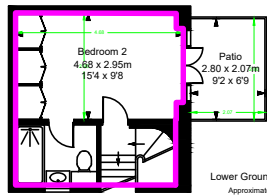


Onslow Gardens, SW7

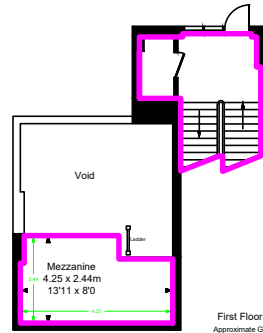
- Flat A
97.39 sq m / 1,048 sq ft
- Flat 1
156.77 sq m / 1,687 sq ft
- Flat 2
80.98 sq m / 872 sq ft
- Flat 3
71.26 sq m / 767 sq ft
- Flat 4
77.45 sq m / 834 sq ft
- Flat 5
41.06 sq m / 442 sq ft
- Flat 6
45.31 sq m / 488 sq ft

Total Areas Shown On Plan
657.62 sq m / 7,079 sq ft
(Including Communal Area)

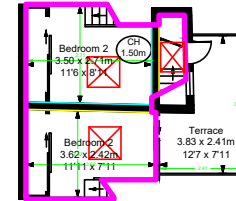
(Including restricted height
under 1.5m)
(CH = Ceiling Heights)



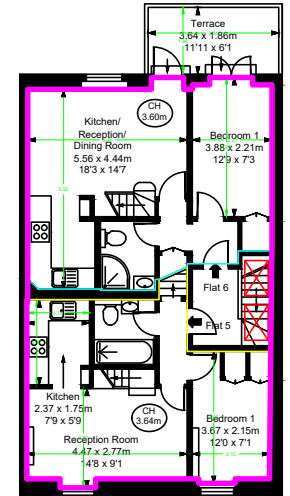
Lower Ground Floor Half landing
Approximate Gross Internal Area
21.82 sq m / 235 sq ft



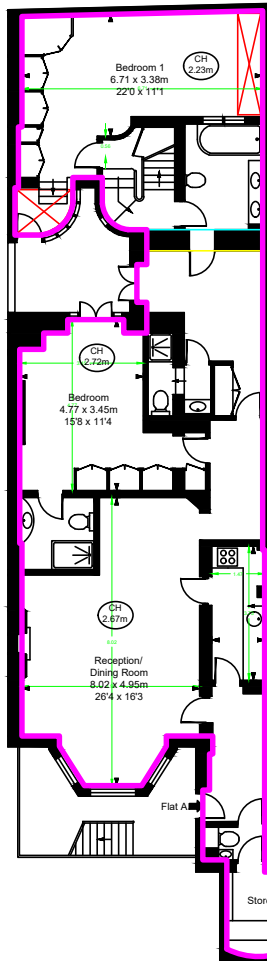
First Floor Half landing
Approximate Gross Internal Area
19.19 sq m / 207 sq ft



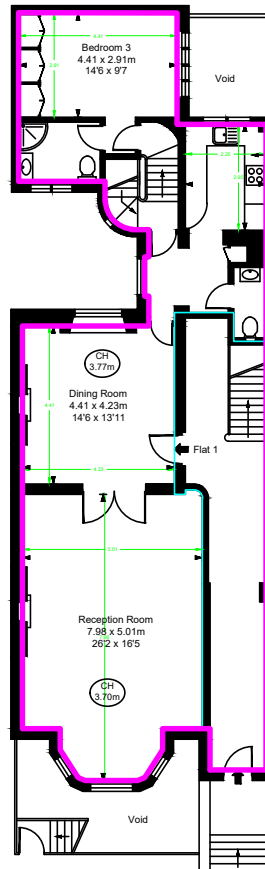
Fifth Floor
Approximate Gross Internal Area
19.84 sq m / 214 sq ft



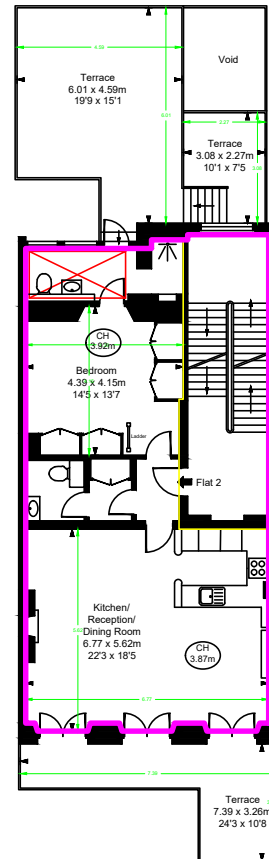
Fourth Floor
Approximate Gross Internal Area
74.94 sq m / 807 sq ft



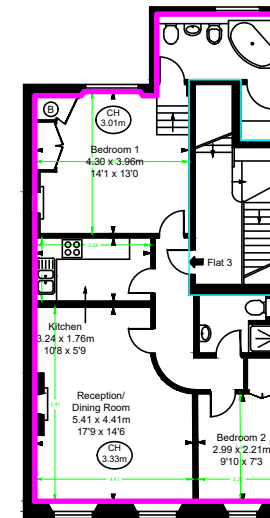
Lower Ground Floor
Approximate Gross Internal Area
138.76 sq m / 1,494 sq ft



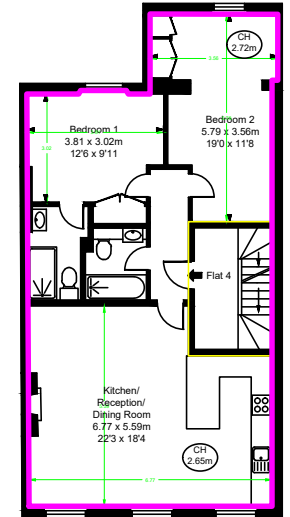
Ground Floor
Approximate Gross Internal Area
121.02 sq m / 1,303 sq ft



First Floor
Approximate Gross Internal Area
91.59 sq m / 986 sq ft



Second Floor
Approximate Gross Internal Area
84.32 sq m / 908 sq ft



Third Floor
Approximate Gross Internal Area
86.14 sq m / 927 sq ft