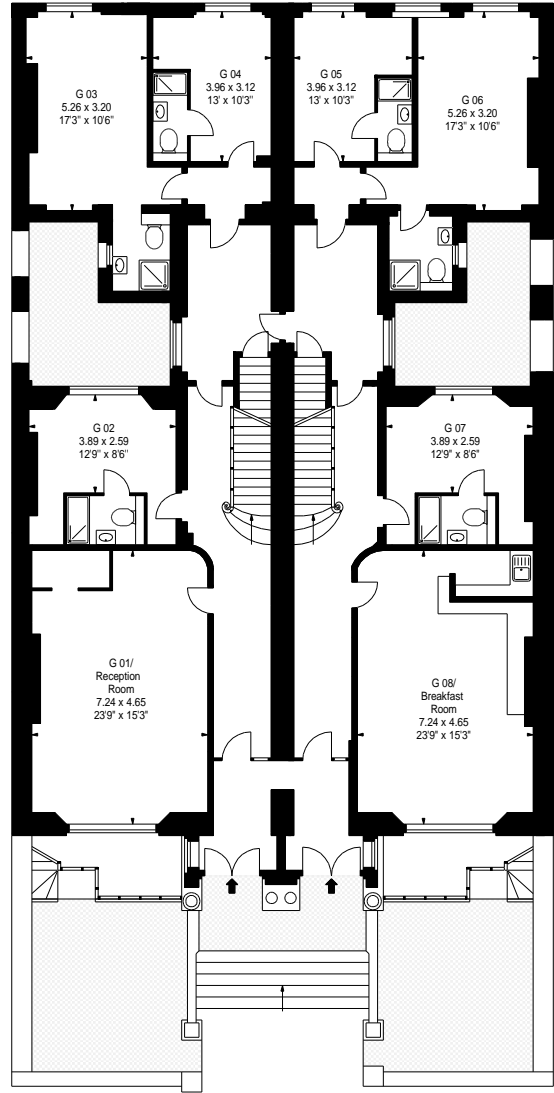


Lower Ground Floor



Ground Floor

APPROX. GROSS INTERNAL AREA *
12,903 Ft² - 1198.69 M²

Property Details:

**HYDE PARK BOUTIQUE HOTEL
LEINSTER GARDENS
LONDON
W2**



Surveyed and Drawn By:



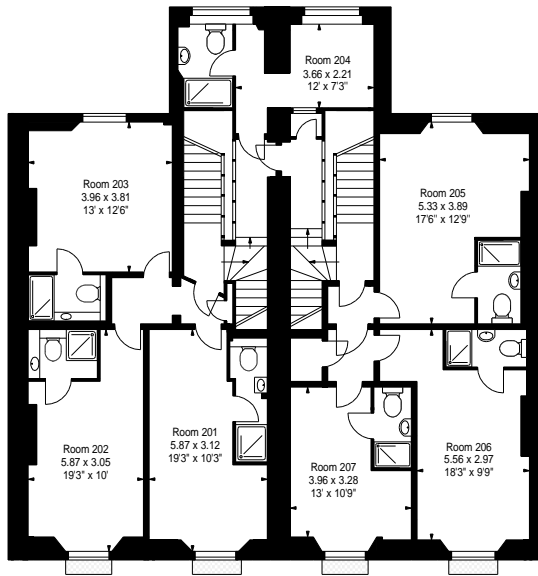
**Hideaway Work Space
1 Empire Mews
London
SW16 2BF**

**SCALE
1:200 @ A4**

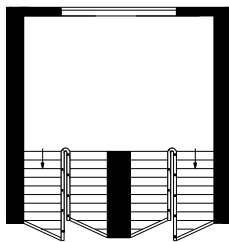
Plans Drawn: 02.05.2019

Tel: 0345 257 2023
info@bkrfloorplans.co.uk
www.bkrfloorplans.co.uk

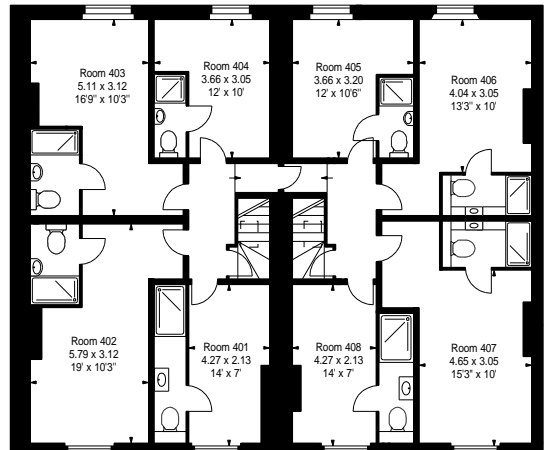
© BKR 2019



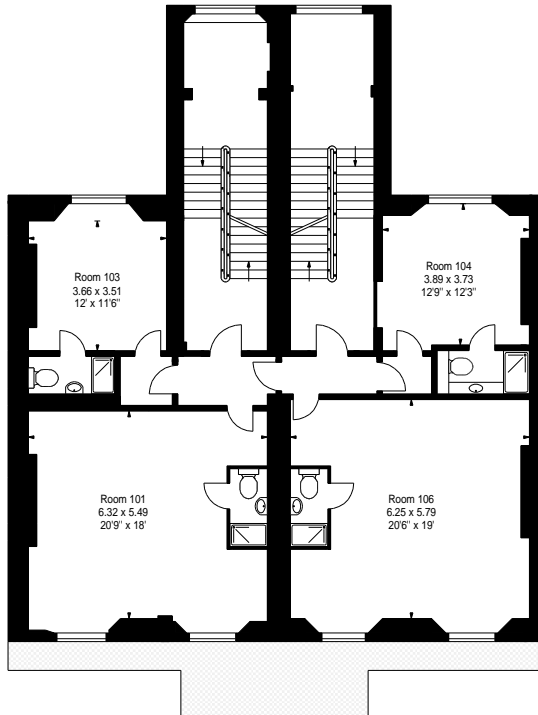
Second Floor



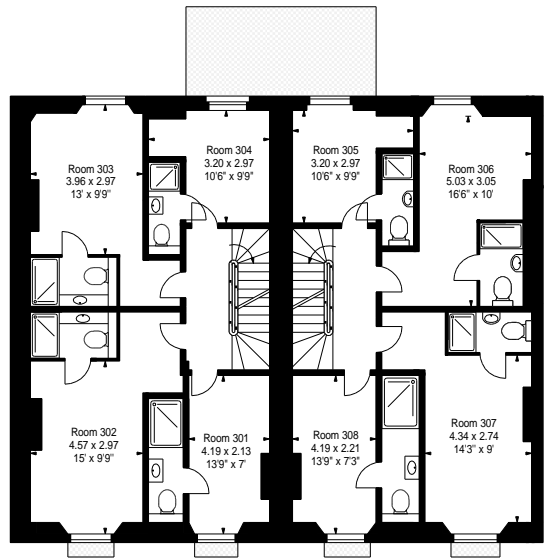
First Floor
Half Landing



Fourth Floor



First Floor



Third Floor

APPROX. GROSS INTERNAL AREA *
12,903 Ft² - 1198.69 M²

Property Details:

**HYDE PARK BOUTIQUE HOTEL
LEINSTER GARDENS
LONDON
W2**



Surveyed and Drawn By:

BKR

Hideaway Work Space
1 Empire Mews
London
SW16 2BF

SCALE
1:200 @ A4

Plans Drawn: 02.05.2019

Tel: 0345 257 2023
info@bkrfloorplans.co.uk
www.bkrfloorplans.co.uk

© BKR 2019