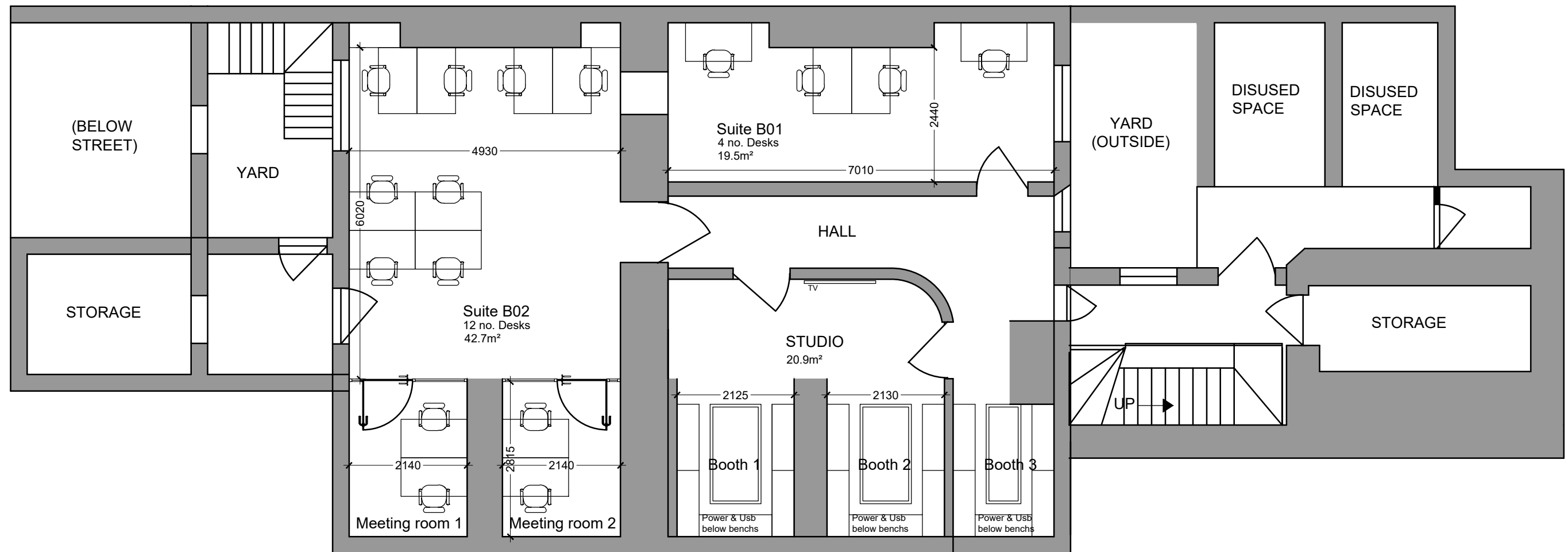
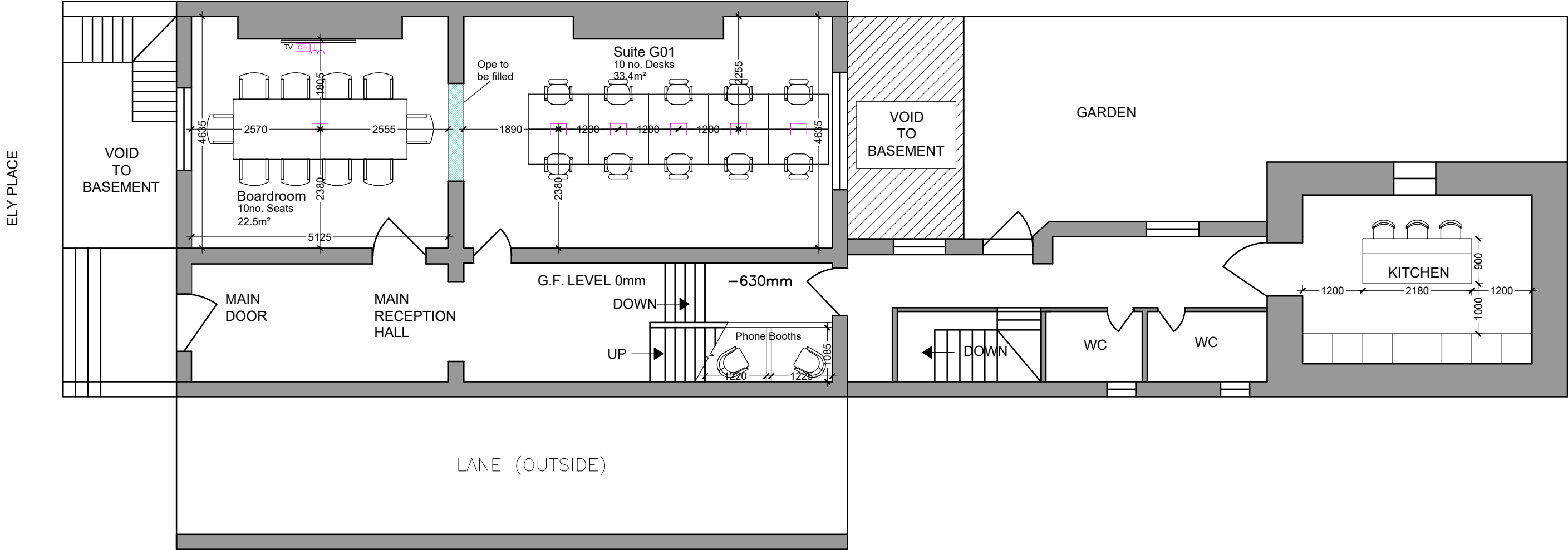


BASEMENT LEVEL



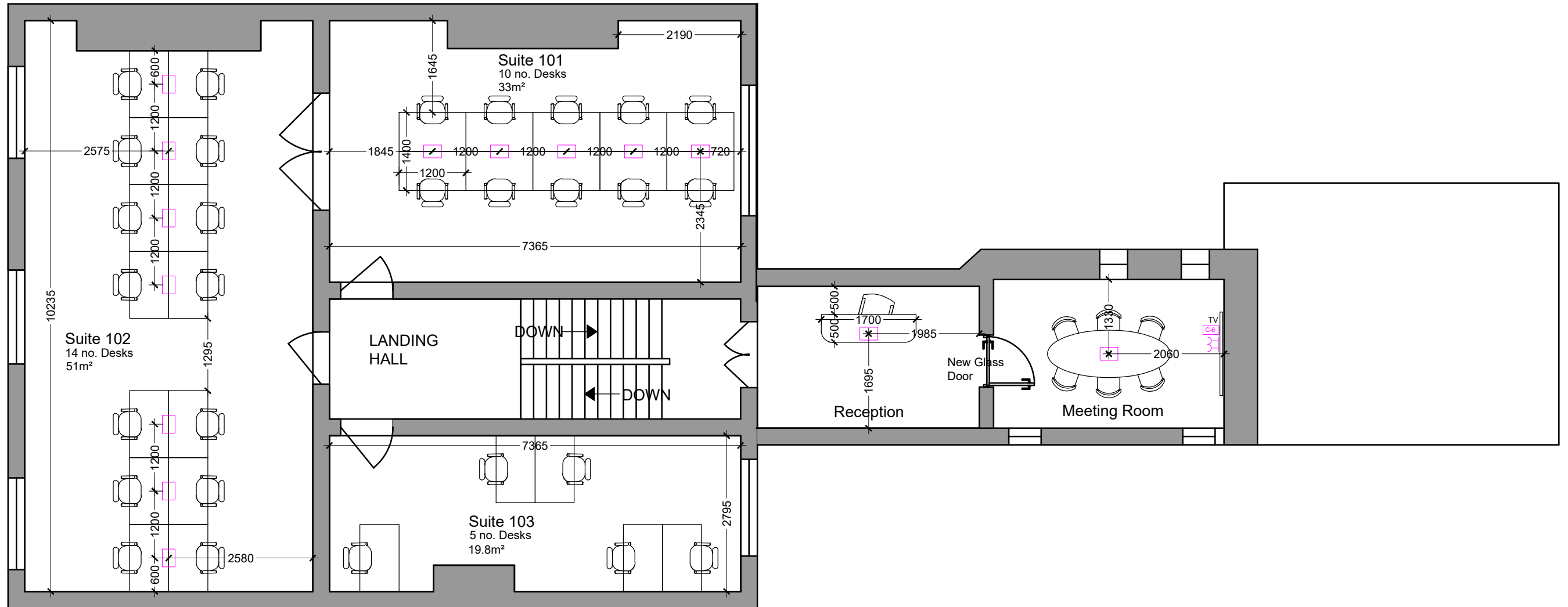
BASEMENT FLOOR TOTAL M² = 142.5m²

GROUND FLOOR



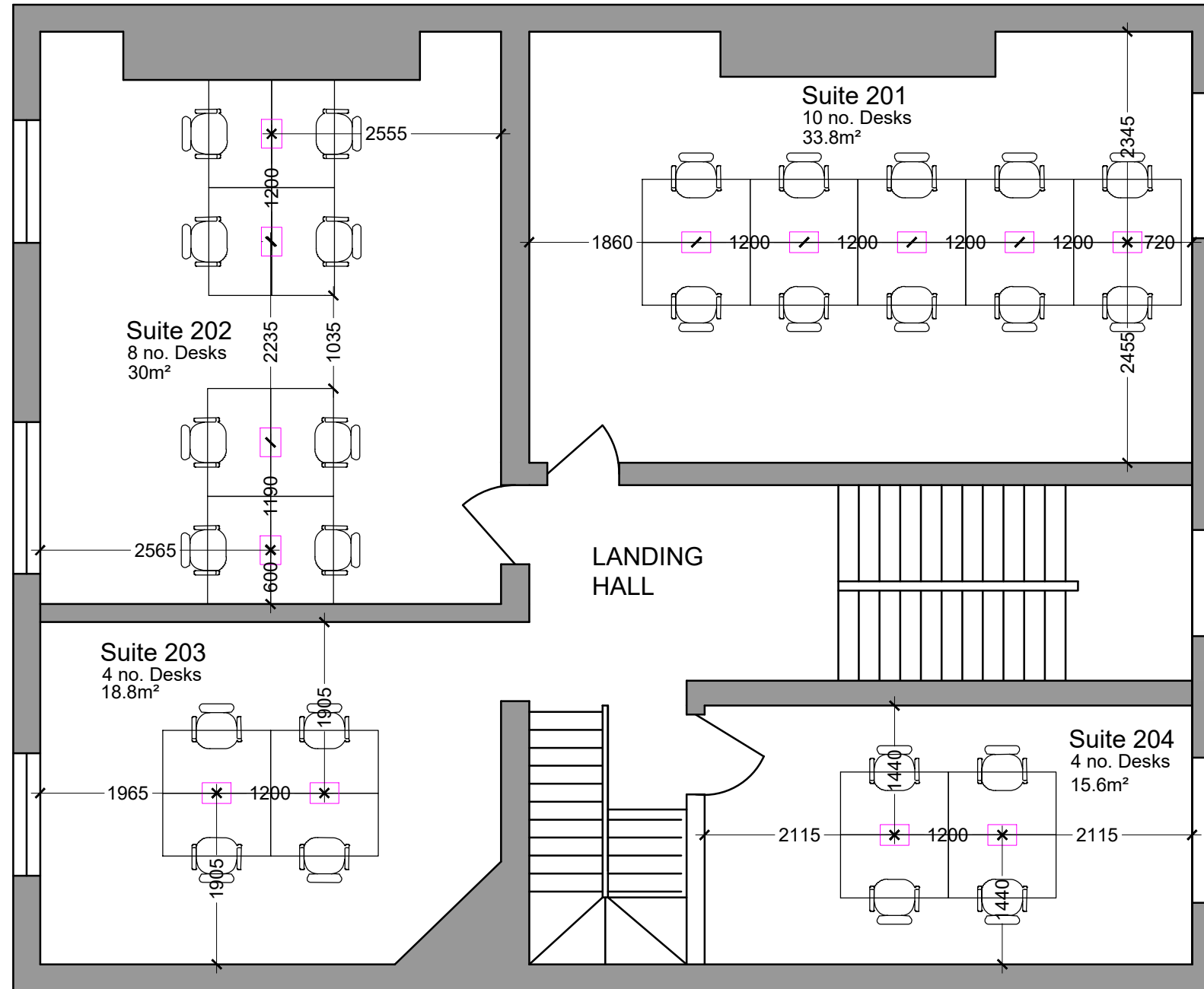
GROUND FLOOR TOTAL M² = 132.15m²

1st. FLOOR



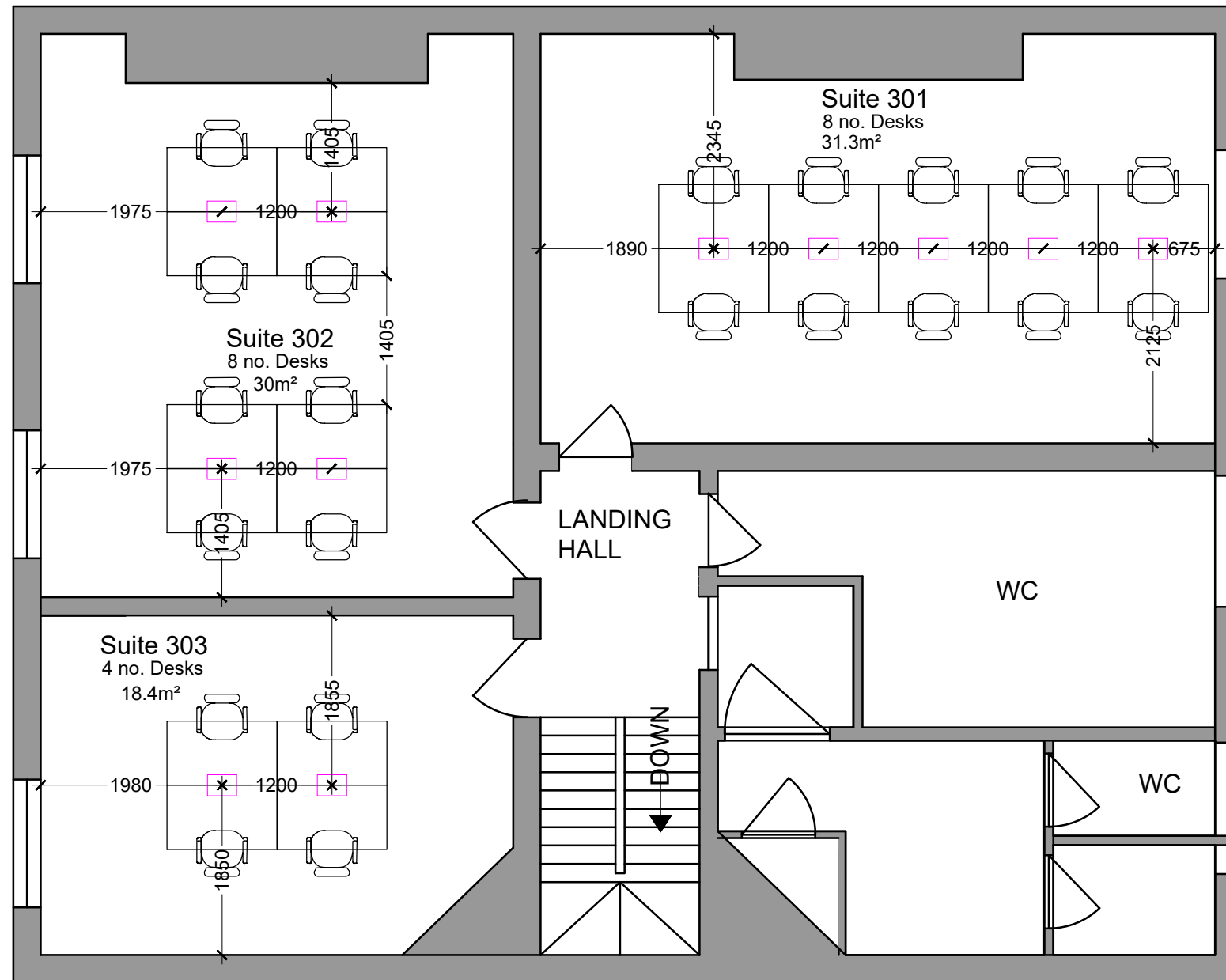
1st FLOOR TOTAL M² = 132.15m²

2nd. FLOOR



2nd FLOOR TOTAL M² = 107.2m²

3rd. FLOOR



3rd FLOOR TOTAL M² = 109.9m²