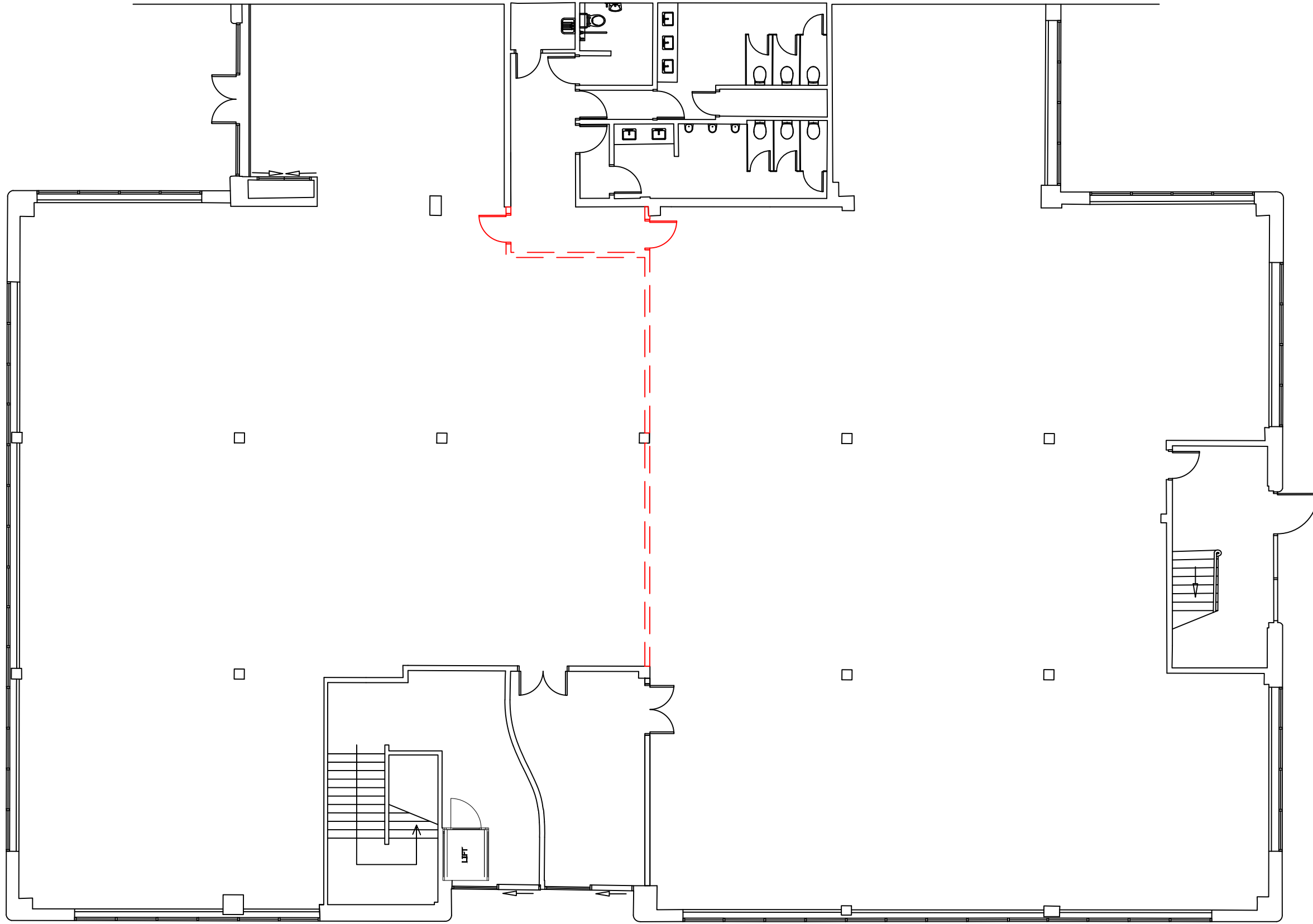


This drawing must be made dimensions to be verified on site.  
 Any dimensions should be checked from Contract Administrator prior to work being put in hand.  
 This drawing is the property of Rhomco Consulting Ltd, and the drawing issued on the condition that it is not copied, reproduced, transferred or displayed in any unauthorised manner, either wholly or in part.  
 Rhomco Consulting Limited  
 This drawing must be used in conjunction with all Risk Assessments and the Contractor must undertake their own Risk Assessments in accordance with work.



DO NOT SCALE

General Notes



Rev	Modifications	By	Date	CHK'd	Auth'

Purpose of Issue	Rev	Date	Authorised

**RHOMCO CONSULTING LTD**  
 WINGWEST HOUSE,  
 OAK TREE COURT,  
 MULBERRY DRIVE,  
 CARDIFF GATE BUSINESS PARK,  
 CARDIFF, CF23 5AR.  
 Tel: 02920 735454  
 Fax: 02920 735 462

Client: **WINGWEST LIMITED**

Project: **GROUND FLOOR, FOUNTAIN HOUSE, FOUNTAIN LANE**

Title: **PROPOSED LAYOUT**

Original Size	Scale	Sheet No.	Issue No.	Date	Authorised
A1	NTS				
RCL 1315	CDF	110			