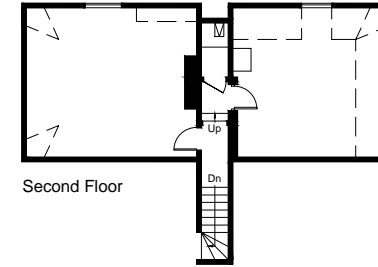
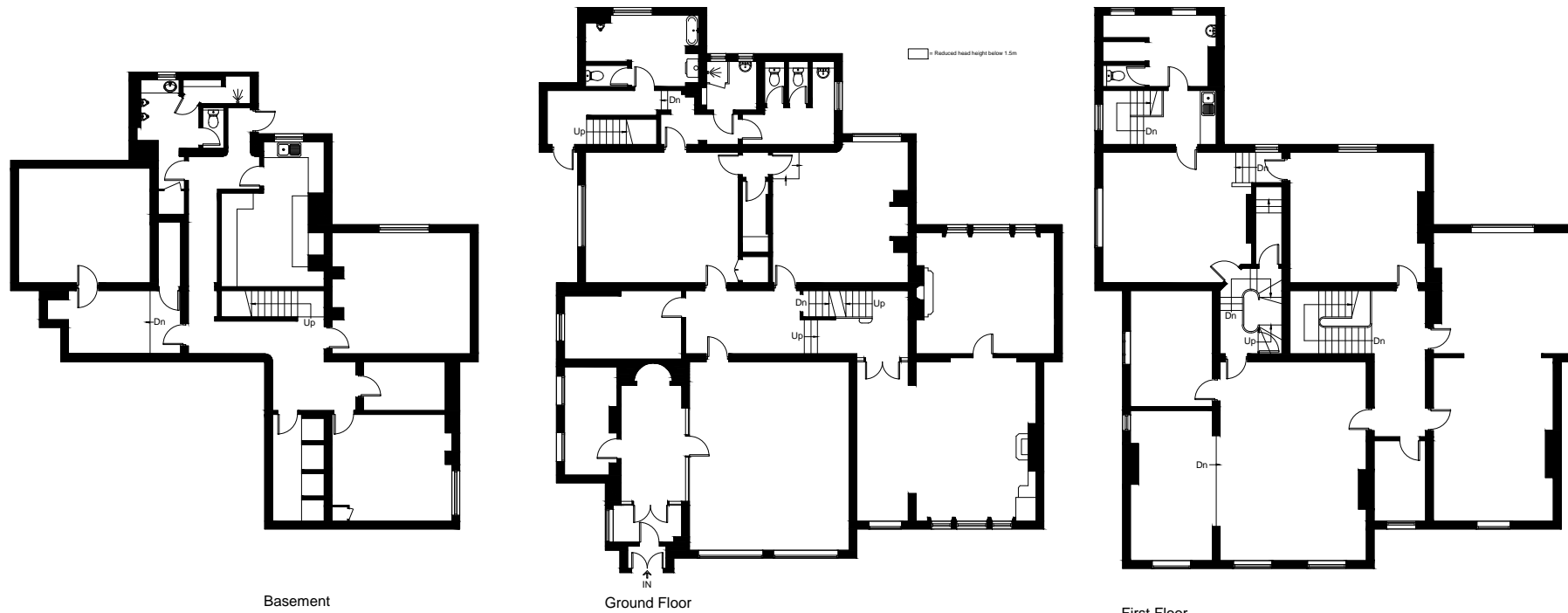


Approximate Area = 608.1 sq m / 6545 sq ft
Basement = 163.1 sq m / 1755 sq ft
Total = 771.2 sq m / 8300 sq ft
Including Limited Use Area (17.1 sq m / 184 sq ft)
For identification only. Not to scale.
© Fourwalls



Second Floor



Basement

Ground Floor

First Floor