

BY WAY OF ASSIGNMENT

3rd Floor, Imperial House

4-10 Donegall Square East, Belfast

Fully fitted office accommodation extending to about 5,348 sq ft (497 sq m)





Located on Donegall Square.



By way of Assignment.



Fully fitted accommodation.



Extends to about 5,348 sq ft (497 sq m)



EPC - C73



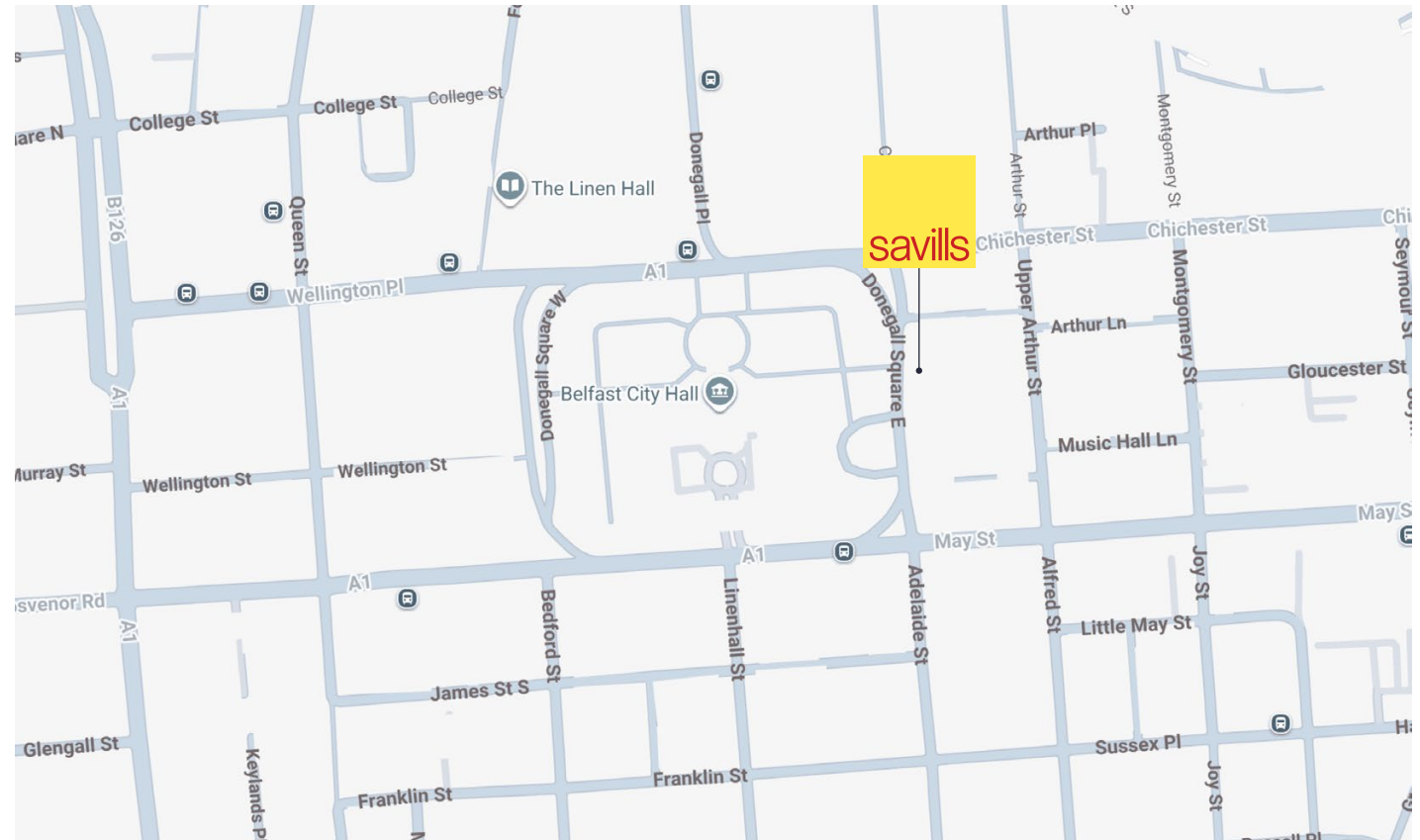
£120,000 per annum plus VAT

Location

Belfast is the capital of Northern Ireland, the 12th largest city in the United Kingdom and the 2nd largest on the isle of Ireland.

The city benefits from excellent connectivity, with the M2 motorway providing access to the north towards Antrim and Derry-Londonderry, and the M1 motorway providing access to the south and west of the province towards Lisburn and Newry.

The wider Belfast Metropolitan Area has a population in excess of about 700,000. As the largest commercial centre in Northern Ireland, Belfast has developed into one of the UK and Ireland's premier business cities and has the largest employed population in the region.

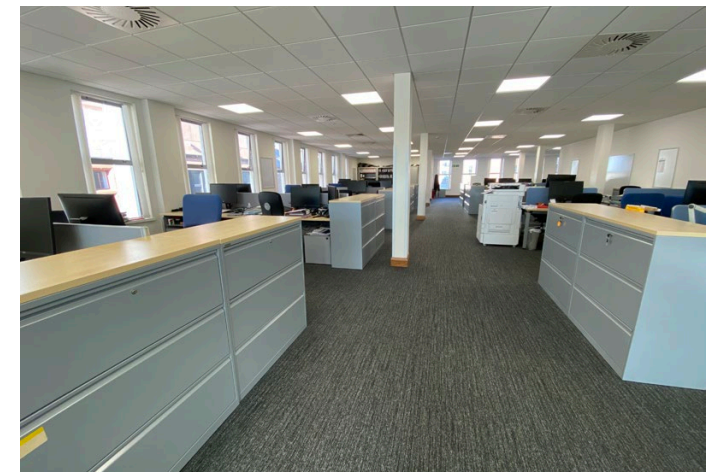


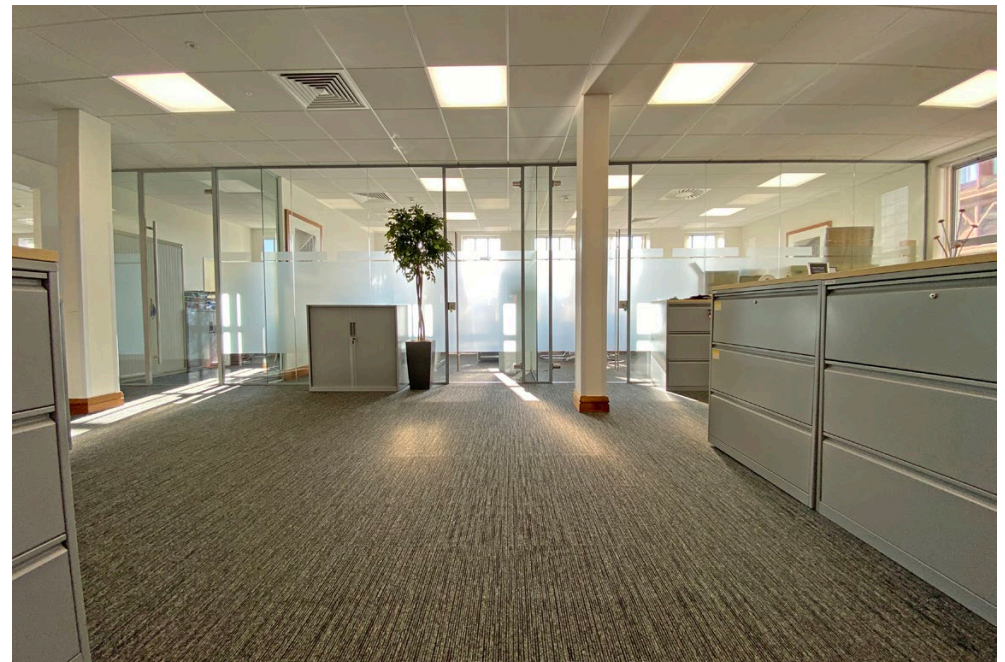
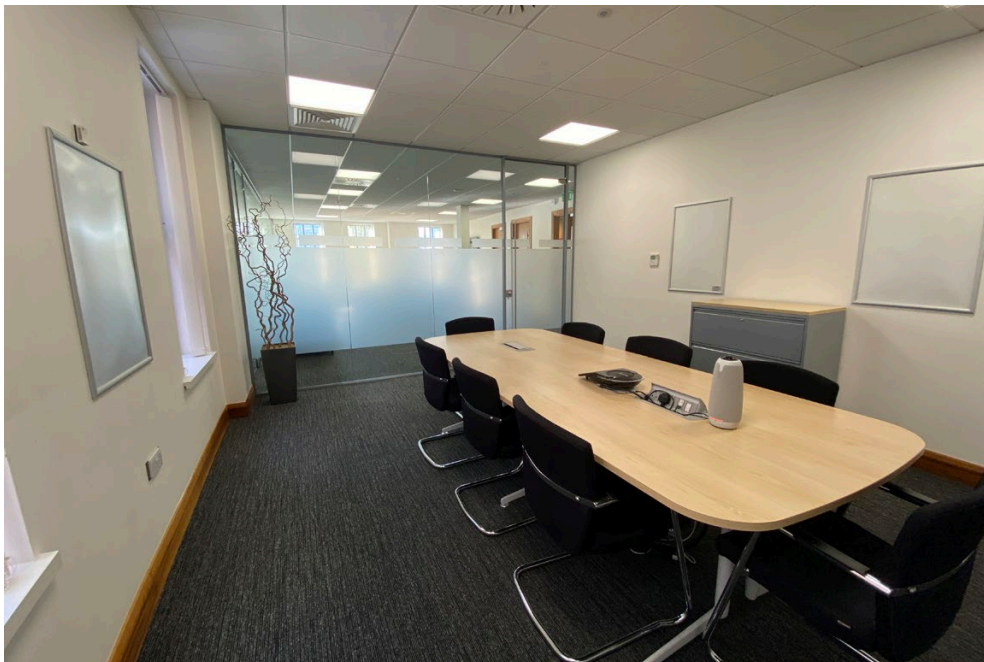
Description

Donegall Square East is regarded as the principal office location within Belfast's Central Business District.

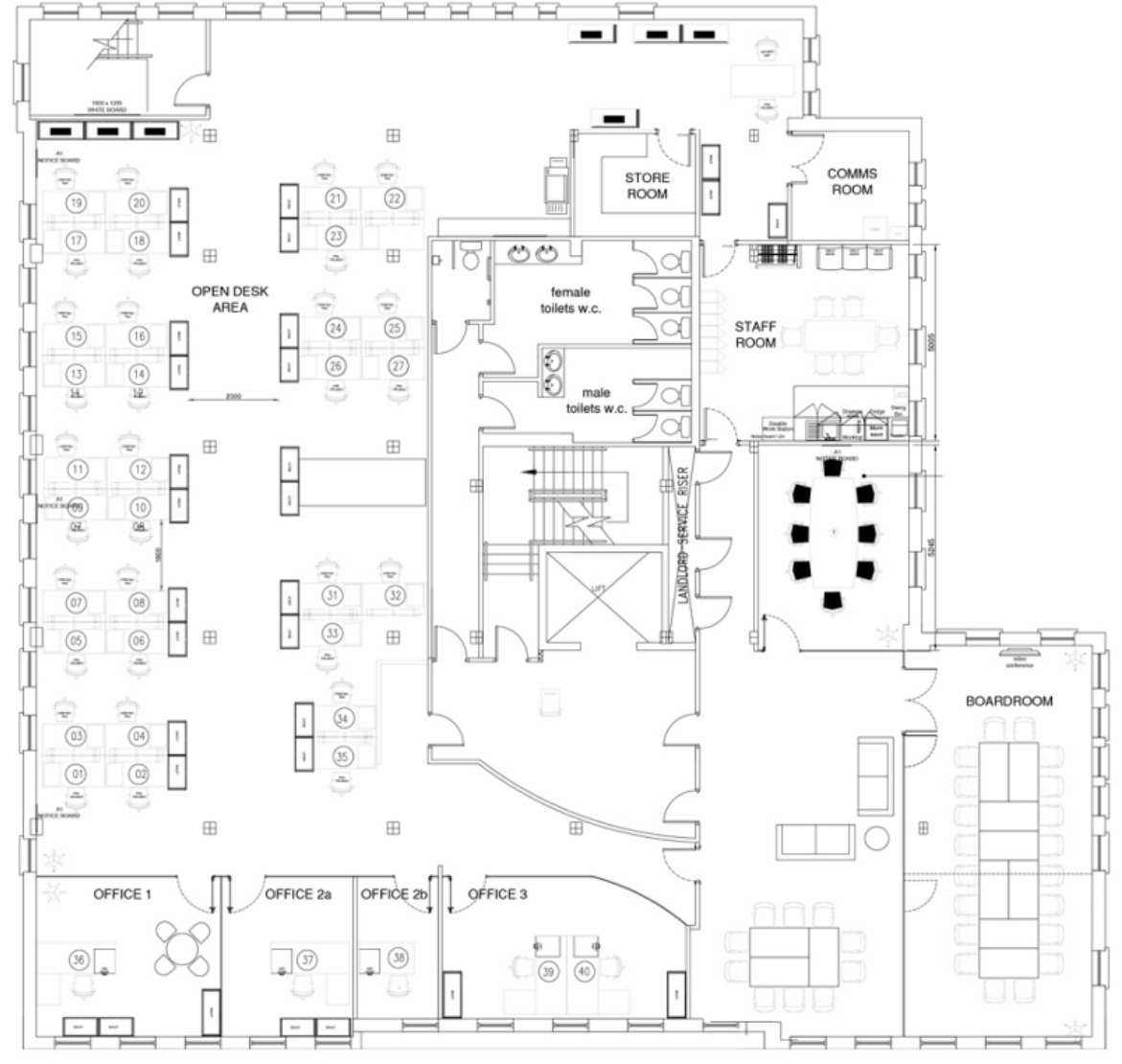
Imperial House sits directly adjacent to Ulster Bank Belfast HQ and the immediate area comprises a mix of office and retail businesses.

Occupiers located in close proximity include Ulster Bank, Bank of Ireland, NFU Mutual, Grant Thornton, Danske Bank and M&S.





Floor plan



THIRD

Accommodation

Description	Sq Ft	Sq M
Third Floor	5,348	497

Please note these floor areas are as per the original on site measurements and are for guidance purposes only. Parties must satisfy themselves as to the accuracy of same.

Lease Terms

10 year lease from 18 December 2024 with an option to determine at 18 December 2029 subject to 6 months prior written notice.

Rent: £120,000 per annum plus VAT
Service Charge 2025/26: £44,683 per annum plus VAT
Insurance 2025/26: £3,695.17



Further information

VAT

All prices quoted are exclusive of and therefore may be liable to VAT.

EPC

C73. Full EPC certificate available on request.

RATES

We have been advised by the Land and Property Services of the following rating information:

Net Annual Value: £77,200

Estimated Rates Payable 2025/26: £48,379

CONTACT



Savills Belfast
2nd Floor,
Longbridge House,
16-24 Waring Street,
Belfast, BT1 2DX
savills.ie

Neal Morrison
neal.morrison@savills.ie
+44 (0) 28 9026 7824

Gavin Clarke
gavin.clarke@savills.ie
+44 (0) 28 9027 0031

IMPORTANT NOTICE

Savills, their clients and any joint agents give notice that they are not authorised to make or give any representations or warranties in relation to the property either here or elsewhere, either on their own behalf or on behalf of their client or otherwise. They assume no responsibility for any statement that may be made in these particulars. These particulars do not form part of any offer or contract and must not be relied upon as statements or representations of fact. Any areas, measurements or distances are approximate. The text, images and plans are for guidance only and are not necessarily comprehensive. It should not be assumed that the property has all necessary planning, building regulation or other consents and Savills has not tested any services, equipment, or facilities. Purchasers must satisfy themselves by inspection or otherwise. Rents quoted in these particulars may be subject to VAT in addition.