

# London Business School

London Business School  
Campus Services  
26 Park Road  
London  
NW1 4SA

Tel: 020 7000 7000  
www.london.edu

#### Notes

This drawing and the information contained therein are subject to the London Business School copyright. It is forbidden to reproduce this drawing in part or in whole without the written permission of a nominated representative of the University. All dimensions to be verified on site prior to commencement of any works. Any discrepancies to be notified in writing to London Business School. DO NOT scale from this drawing.

#### Key

Total Space Areas by Floor measured in metres squared using RICS guidelines on measuring standards

NIA (Net Internal Area) **240.31 m<sup>2</sup>**

GIA (Gross Internal Area) **404.05 m<sup>2</sup>**

GEA (Gross External Area) **408.68 m<sup>2</sup>\***

\*Some outer walls not drawn so approximate

#### Project Title:

**Linhope Street  
Floor plan**

#### Floor:

**36 Linhope Street, G Fl**

#### Drawing Title:

**All Rooms  
Measuring Standards  
36LNH-G01 - 14**

#### Drawn By:

**HS**

#### Date Modified:

**13/11/2020**

#### Scale:

**1:210**

#### Project Code:

**Polylines**

#### Drawing No:

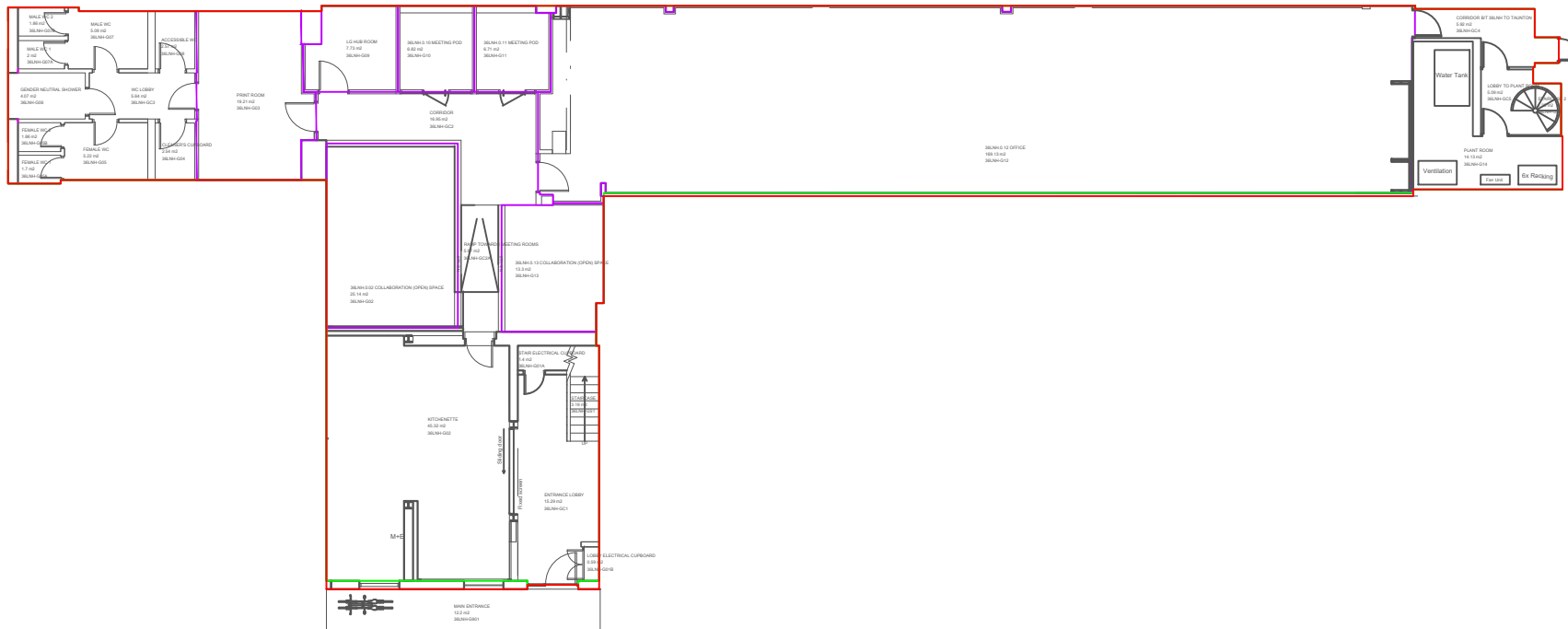
**1**

#### Rev:

**1**

#### Drawing Location

S:\Operations\Operations Delivery\Space Management\_Office Moves\Floorplans





London Business School  
 Campus Services  
 26 Park Road  
 London  
 NW1 4SA

Tel: 020 7000 7000  
 www.london.edu

**Notes**

This drawing and the information contained therein are subject to the London Business School copyright. It is forbidden to reproduce this drawing in part or in whole without the written permission of a nominated representative of the University. All dimensions to be verified on site prior to commencement of any works. Any discrepancies to be notified in writing to London Business School. DO NOT scale from this drawing.

**Key**

Total Space Areas by Floor measured in metres squared using RICS guidelines on measuring standards

- NIA (Net Internal Area) 150.04 m<sup>2</sup>
- GIA (Gross Internal Area) 198.66 m<sup>2</sup>
- GEA (Gross External Area) 223.04 m<sup>2</sup>\*

\*Some outer walls not drawn so approximate

**Project Title:**

Linhope Street  
 Floor plan

**Floor:**

36 Linhope Street, 1 Fl

**Drawing Title:**

All Rooms  
 Measuring Standards  
 36LNH-101 - 05

**Drawn By:**

HS

**Date Modified:**

13/11/2020

**Scale:**

NTS

**Project Code:**

Polylines

**Drawing No:**

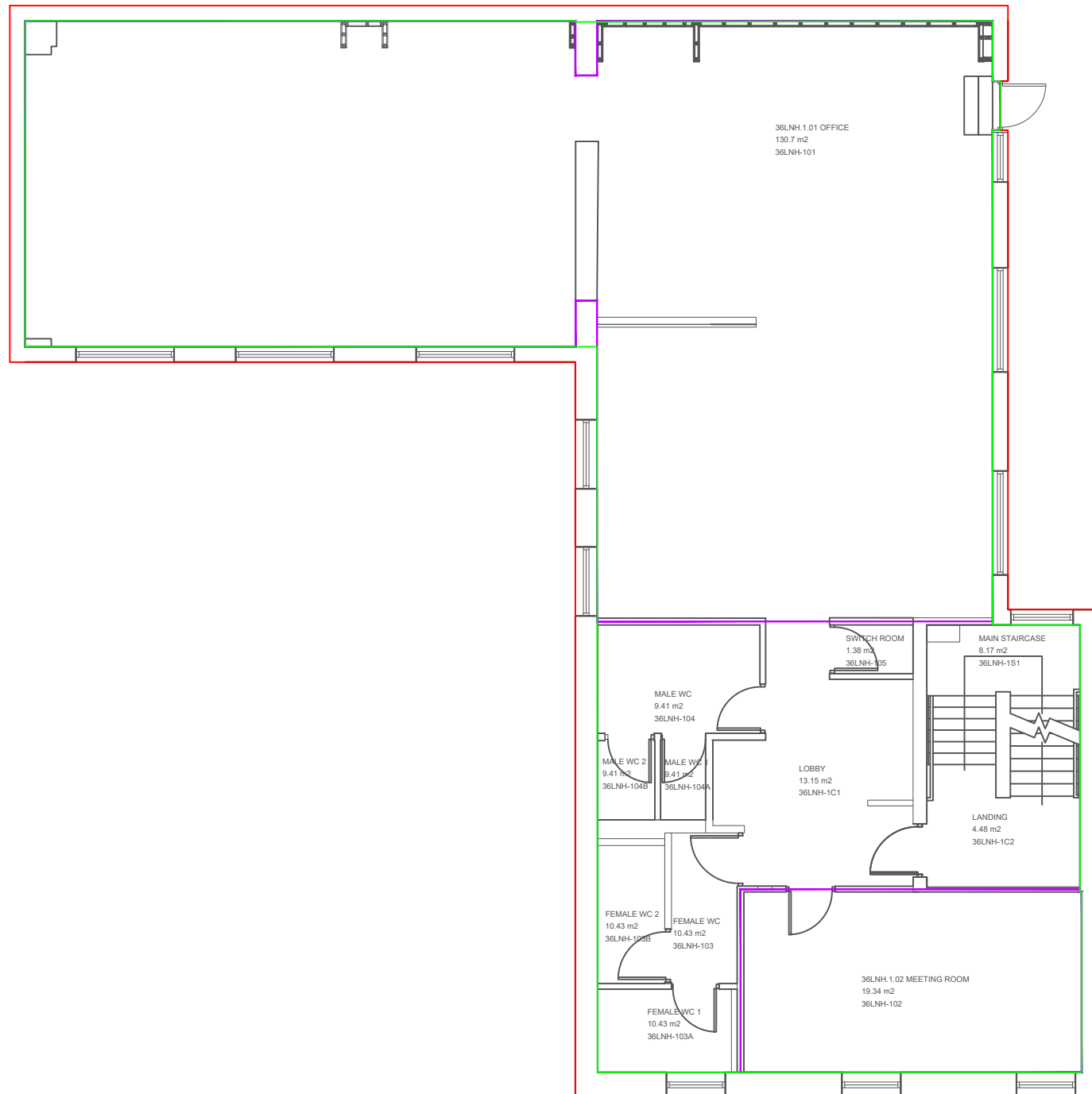
1

**Rev:**

1

**Drawing Location**

S:\Operations\Operations Delivery\Space Management\_Office Moves\Floorplans



# London Business School

London Business School  
Campus Services  
26 Park Road  
London  
NW1 4SA

Tel: 020 7000 7000  
www.london.edu

**Notes**

This drawing and the information contained therein are subject to the London Business School copyright. It is forbidden to reproduce this drawing in part or in whole without the written permission of a nominated representative of the University. All dimensions to be verified on site prior to commencement of any works. Any discrepancies to be notified in writing to London Business School. DO NOT scale from this drawing.

**Key**

Total Space Areas by Floor measured in metres squared using RICS guidelines on measuring standards

- NIA (Net Internal Area) **172.44 m<sup>2</sup>**
  - GIA (Gross Internal Area) **190.08 m<sup>2</sup>**
  - GEA (Gross External Area) **211.83 m<sup>2</sup>\***
- \*Some outer walls not drawn so approximate

**Project Title:**

**Linhope Street Floor plan**

**Floor:**

**36 Linhope Street, 2 Fl**

**Drawing Title:**

**All Rooms  
Measuring Standards  
36LNH-201 - 03**

<b>Drawn By:</b>	<b>Date Modified:</b>	<b>Scale:</b>
HS	13/11/2020	1:100

<b>Project Code:</b>	<b>Drawing No:</b>	<b>Rev:</b>
Polylines	1	1

**Drawing Location**

S:\Operations\Operations Delivery\Space Management\_Office Moves\Floorplans

